

Flight Procedures Cover Page	Task Action: FLIGHT CHECK	Task Type: IAP	Estimated Chart Date: 11/03/2022	APWS Task ID: 71ADB63F73464911B20A8B1A5372D68F	APWS Project ID: 35F00BF4522E4F178C01C5E51CCB2B6E
Procedure: RNAV (GPS) RWY 2 AMDT 3		Enroute: NO	Specialist: Getz, Peter		Agreement Number:
Airport ID: KWVI			Airport City: WATSONVILLE		State: CA
Facility ID:	Facility Type:	Flight Inspection Remark Type: New FC Slot			
<p>Procedure Comments:</p> <p>ACTIVE DATA USED</p> <p>CONTACT DONALD LANIER: WK: (405) 954-8242 CELL: (405)-210-2999</p> <p><i>Digitally signed by</i>  <b>ERIC N SUSKI</b>  Sep 16, 2022</p>					

QUALITY  
20  
CHECKED

QUALITY  
9  
CHECKED

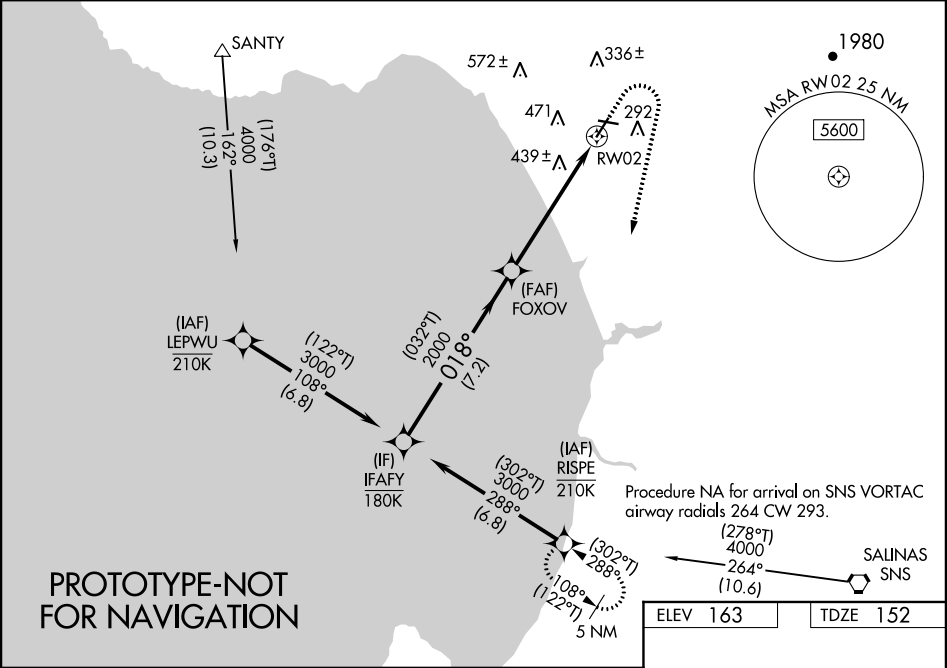
<b>FIPC BASIC FORM</b>						
<b>PROCEDURE:</b> RNAV (GPS) RWY 2 AMDT 3			<b>AIRPORT NAME:</b> WATSONVILLE MUNI		<b>AIRPORT ID:</b> KWVI	<b>SPECIAL CONTROL NO:</b> SG-07-111-22
<b>FAC ID:</b> KWVI02.03		<b>CITY:</b> WATSONVILLE			<b>ST:</b> CA	<b>ORIG CHART DATE:</b> 11/03/2022
<b>DFL TYPE:</b> PROC/S	<b>THIRD PARTY:</b> <input type="checkbox"/> YES	<b>EST. TIME ON SITE:</b> 0.4	<b>REIMB. NUMBER:</b>	<b>PTS TASK ID:</b> 71ADB63F73464911B20A8B1A5372D68F		
<b>PREFLIGHT NOTES</b>						
<b>REVIEWER:</b> ashu s gautam					<b>DATE:</b> 09/13/2022	
<b>COMMENTS:</b> LPV & LNAV/VNAV mins changed. CAT D circling mins changed. New missed approach added.					<b>CHECK ONE:</b> <input checked="" type="checkbox"/> FLT CK REQ <input type="checkbox"/> NFCR <input type="checkbox"/> REJECT <div style="border-top: 1px solid black; display: flex; justify-content: space-between; padding-top: 2px;"> <span></span> <span>YES</span> <span>NO</span> </div> <div style="border-top: 1px solid black; display: flex; justify-content: space-between; padding-top: 2px;"> <span>CPV COMPLETE?</span> <span>X</span> <span></span> </div>	
<b>PROCEDURE RESULTS</b>						
<b>INSPECTION DATE:</b> 09/13/2022	<b>CREW #:</b> VN486	<b>N #:</b> N72	<b>INSTRUMENT PROCEDURE STATUS:</b> <input checked="" type="checkbox"/> SAT <input type="checkbox"/> SAT W/CHANGES <input type="checkbox"/> UNSAT		<b>ARINC CODING:</b> <input checked="" type="checkbox"/> SAT <input type="checkbox"/> SAT/GOLD <input type="checkbox"/> UNSAT	
<b>FLIGHT INSPECTOR SIGNATURE:</b> ashu s gautam @ 09/13/2022 20:28			<b>PRINTED NAME:</b> GAUTAM, ASHU SINGH			<b>NOTAM INITIATED?</b> <input type="checkbox"/> YES <input checked="" type="checkbox"/> NO
<b>FLIGHT INSPECTOR REMARKS:</b> Procedure flown Sat. LPV & LNAV/VNAV mins changed. CAT D circling flown SAT. New missed approach flown sat. RWY survey SAT.						
<b>IN-FLIGHT OBSTACLE REPORT</b>						
<b>OBSTRUCTION ID #:</b>	<b>COORDINATES OR LOCATION:</b>	<b>GNSS ALTITUDE (MSL):</b>	<b>BAROMETRIC ALTITUDE (MSL):</b>	<b>HEIGHT ABOVE GROUND LEVEL:</b>		

WAAS CH <b>50144</b> <b>W02A</b>	APP CRS <b>018°</b>	Rwy Idg TDZE <b>152</b> Apt Elev <b>163</b>	<b>4501</b>
--	------------------------	---	-------------

RNAV (GPS) RWY 2  
WATSONVILLE MUNI (WVI)

RNP APCH - GPS.	MISSED APPROACH: (Do not exceed 185K until RISPE) Climb to 700 then climbing right turn to 5500 direct RISPE and hold, continue climb-in-hold to 5500.
Circling Rwy 9, 27 NA at night. For uncompensated Baro-VNAV systems, LNAV/VNAV NA below 0°C or above 54°C. Circling NA west of Rwy 2-20.	

ASOS <b>132.275</b>	NORCAL APP CON <b>127.15 307.125</b>	UNICOM <b>122.8 (CTAF) 0</b>
------------------------	---	---------------------------------



IFAFY

VGSI and RNAV glidepath not coincident  
(VGSI Angle 3.00/TCH 43).

700

5500

RISPE

3000

GP 3.00°  
TCH 56

FOXOV

2000

2000

1.6 NM to  
RW02

RW02

7.2 NM

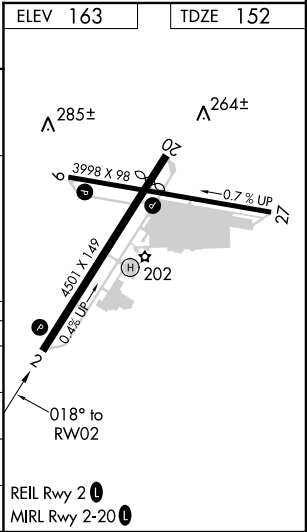
4.1 NM

1.6 NM

032°T

018°

CATEGORY	A	B	C	D
LPV DA	402-¾ 250 (300-¾)			
LNAV/ VNAV DA	768-1¾ 616 (700-1¾)			
LNAV MDA	700-1 548 (600-1)		700-1⅝ 548 (600-1⅝)	
CIRCLING	700-1 537 (600-1)		700-1⅝ 537 (600-1⅝)	1060-3 897 (900-3)



WAAS CH <b>50144</b> <b>W02A</b>	APP CRS <b>018°</b>	Rwy Idg TDZE Apt Elev	<b>4501</b> <b>152</b> <b>163</b>
--	------------------------	-----------------------------	---

# RNAV (GPS) RWY 2

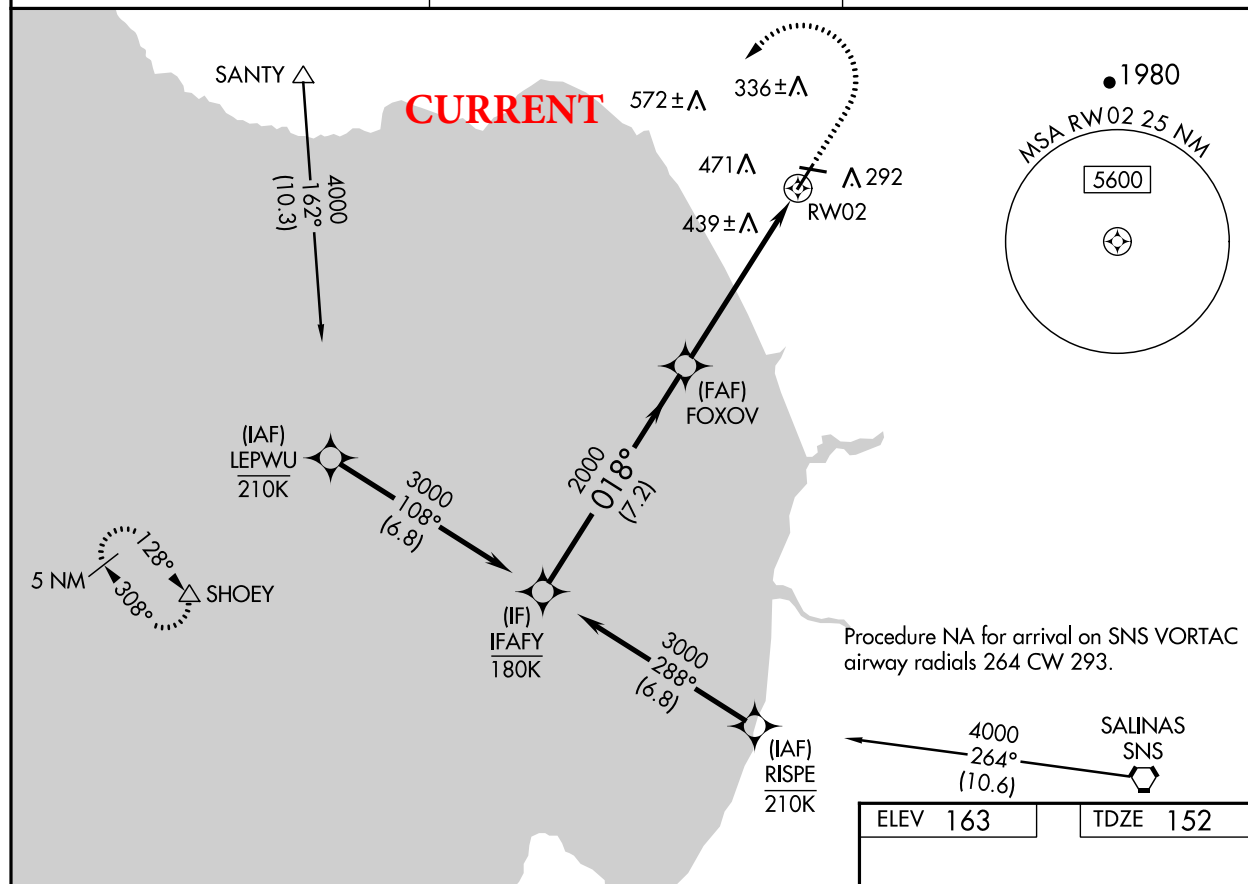
WATSONVILLE MUNI (WVI)


RNP APCH.

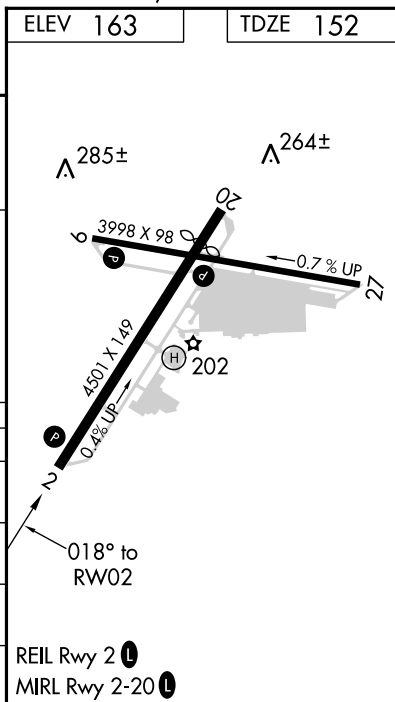
**⚠** Circling Rwy 27 NA at night. Rwy 2 helicopter visibility reduction below  $\frac{3}{4}$  SM NA. For uncompensated Baro-VNAV systems, LNAV/VNAV NA below -2°C or above 54°C. Circling NA west of Rwy 2-20.

**MISSED APPROACH:** (Do not exceed 185K until SHOEY) Climb to 700 then climbing left turn to 6000 direct SHOEY and hold, continue climb-in-hold to 6000.

ASOS <b>132.275</b>	NORCAL APP CON <b>127.15 307.125</b>	UNICOM <b>122.8 (CTAF)</b> <b>📶</b>
------------------------	---	--



IFAFY		VGSI and RNAV glidepath not coincident (VGSI Angle 3.00/TCH 43).		700	6000	SHOEY
3000		FOXOV		2000	*LNAV only	
018°		2000		*1.6 NM to RW02		RW02
GP 3.00° TCH 56		7.2 NM		4.1 NM		1.6 NM
CATEGORY		A	B	C	D	
LPV DA	448-7/8 296 (300-7/8)					
LNAV/ VNAV DA	772-13/4 620 (700-13/4)					
LNAV MDA	700-1 548 (600-1)			700-15/8 548 (600-15/8)		
 CIRCLING	700-1 537 (600-1)			700-15/8 537 (600-15/8)		1100-3 937 (1000-3)



# Federal Aviation Administration Categorical Exclusion Declaration

**Date:** 03/07/22

**IFP:** Oleck, Perry (perry.j.oleck@faa.gov)

**Airport Contact:** -

**Request ID:** KWVI\_2234

**Single or Multiple Procedure:** Multiple

**Procedure Name(s):** RNAV (GPS) Rwy 2

**Procedure Request Description:**

The Federal Aviation Administration (FAA) has proposed to change the RNAV (GPS) RWY02 missed approach from “climbing left turn direct SHOEY” (fix) to “climbing right turn direct RISPE” (waypoint). The operational benefit is moving the the current missed approach procedure (left turn) that leads to aircraft intercepting the on-field parachute landing area (PLA), to the missed approach turn away from that area. Although skydiving activity is prohibited during instrument meteorological conditions, there are instances where the coastal marine layer and low level stratus reaches just to the missed approach point, while the area above and north of the PLA is visual meteorological conditions. It's possible that executing a missed approach could result in a conflict with a skydiver.

No environmental impacts anticipated as a result of missed approach changes.

**Declaration of Exclusion:**

The FAA has reviewed the above referenced proposed action and it has been determined, by the undersigned, to be categorically excluded from further environmental documentation according to FAA Order 1050.1, "Environmental Impacts: Policies and Procedures." The implementation of this action will not result in any extraordinary circumstances in accordance with FAA Order 1050.1.

**Basis for this Determination:**

This review was conducted in accordance with policies and procedures in Department of Transportation Order 5610.1, "Procedures for Considering Environmental Impacts" and FAA Order 1050.1.

**The applicable Categorical Exclusion is:**

**5-6.5.j:** Implementation of procedures to respond to emergency air or ground safety needs, accidents, or natural events with no reasonably foreseeable long-term adverse impacts. (ATO)

**The above flight procedure has been developed within the accepted parameters.**

Concurrence/Reviewed By: **VIKAS  
UBEROI** Digitally signed by VIKAS  
UBEROI  
Date: 2022.03.07  
07:36:02 -08'00' Date: \_\_\_\_\_

Title: Environmental Protection Specialist - AJV W25

Approved By: **BYRON G Y  
CHEW** Digitally signed by  
BYRON G Y CHEW  
Date: 2022.03.07  
16:06:58 -08'00' Date: \_\_\_\_\_

Title: Acting Group Manager, Operations Support Group, Western Service Center, AJV-W2



KWVI WATSONVILLE MUNI, WATSONVILLE, CA  
RNAV (GPS) RWY 2, AMDT 3  
LNAV/VNAV FINAL, MISSED APPROACH  
1:500,000









KWVI WATSONVILLE MUNI, WATSONVILLE, CA  
 RNAV (GPS) RWY 2, AMDT 3  
 200 KIAS MISSED APPROACH HOLDING  
 1:500,000

Flight operations below 1000' AGL over the designated areas within the Monterey Bay National Marine Sanctuary violate NOAA regulations (see 15 CFR 922).

WARNING fleet and air operations ducted to approximately seaward.

CTC NORCAL APP WITHIN 20 NM ON 127.15 307.125

See NOTAMs/Supplement for Class C off hrs

MONTEREY RGNL (MRY)  
 CT - 118.4 \* ATIS 119.25  
 257° L 72 122.95  
 RP 28L 28R  
 AOE

Flight operations below 1000' AGL over the designated areas within the Monterey Bay National Marine Sanctuary violate NOAA regulations (see 15 CFR 922).

WARNING W 285D

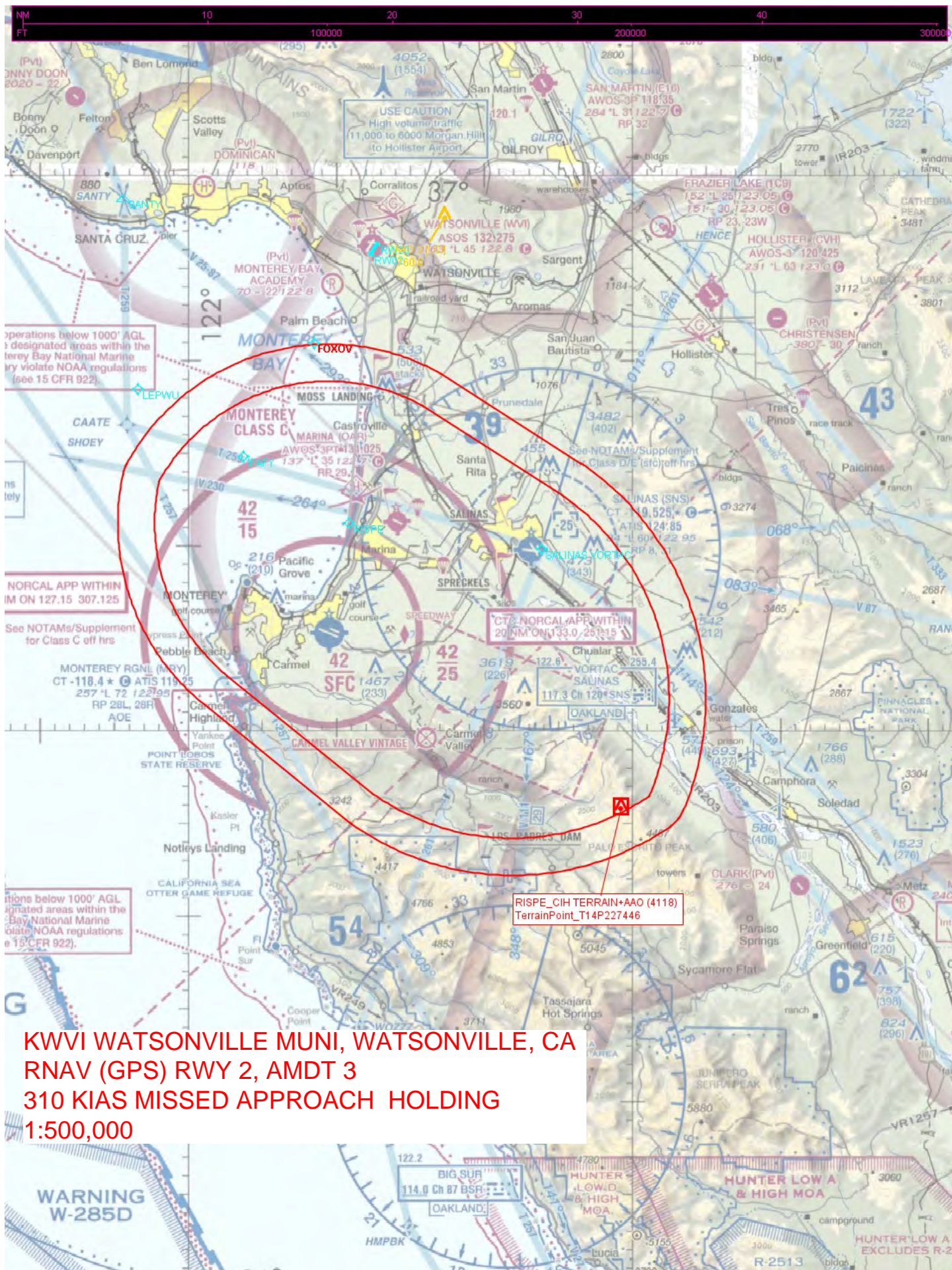
CTC NORCAL APP WITHIN 20 NM ON 127.15 307.125

CRISPE TOWER (3619)  
 06-000142

BIG SUR  
 114.0 Ch 87 BSR  
 OAKLAND

HUNTER LOW A & HIGH MOA





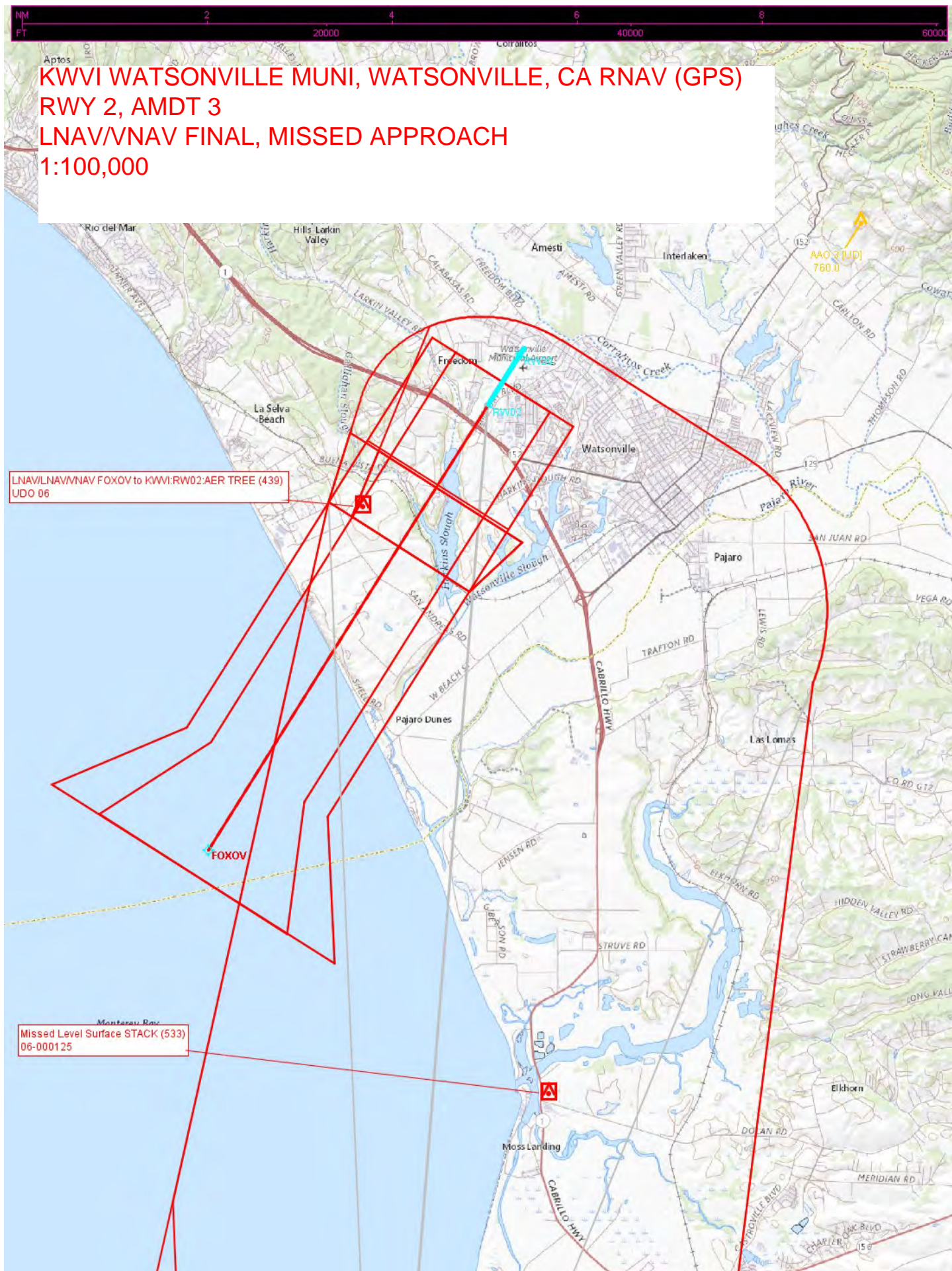
KWVI WATSONVILLE MUNI, WATSONVILLE, CA  
RNAV (GPS) RWY 2, AMDT 3  
310 KIAS MISSED APPROACH HOLDING  
1:500,000



KWVI WATSONVILLE MUNI, WATSONVILLE, CA  
RNAV (GPS) RWY 2, AMDT 3  
LPV FINAL, MISSED APPROACH  
1:100,000









LNAV/LNAV/VNAV FOXOV to KWWI:RW02:AER TREE (439)  
UDO 06

Missed Level Surface STACK (533)  
06-000125



KWVI WATSONVILLE MUNI, WATSONVILLE, CA  
RNAV (GPS) RWY 2, AMDT 3 CIRCLING EAST  
CAT A - D  
1:100,000

