

Flight Procedures Cover Page	Task Action: P-NOTAM	Task Type: IAP	Estimated Chart Date: 02/20/2025	APWS Task ID: 718F6B9785B146998BF6C5D0C98778DD	APWS Project ID: EF76FAE67C0944879999DF88EAF48562
Procedure: RNAV (GPS) RWY 13 AMDT 1D		Enroute: NO	Specialist: Mendenhall, Christopher		Agreement Number:
Airport ID: KINK			Airport City: WINK		State: TX
Facility ID:	Facility Type:	Flight Inspection Remark Type:			
<div>Procedure Comments: ACTIVE DATA USED FOR KINK  DELETED NOTE: VGSI AND RNAV GLIDEPATH NOT COINCIDENT (VGSI ANGLE 3.00/TCH 22)  CLEAR NOTAM !FDC 4/0169  PROCESSED IAW TECHNICAL SUPPORT GROUP (AJF-17) MEMO DATED 07/07/2021, SUBJECT: GUIDANCE FOR PROCEDURAL CHANGES REQUIRING FLIGHT INSPECTION/VALIDATION  CONTACT: DAVID DANNER 405-954-5077</div> <div><div>QUALITY 41 CHECKED</div><div>QUALITY 32 CHECKED <div>Digitally signed by PABLO ORTIZ-JR Oct 16, 2024</div></div></div>					

WINK, TEXAS

AL-461 (FAA)

23306

WAAS CH <b>93831</b> <b>W13A</b>	APP CRS <b>132°</b>	Rwy Idg TDZE Apt Elev	<b>5003</b> <b>2822</b> <b>2822</b>
--	------------------------	-----------------------------	---

OLD

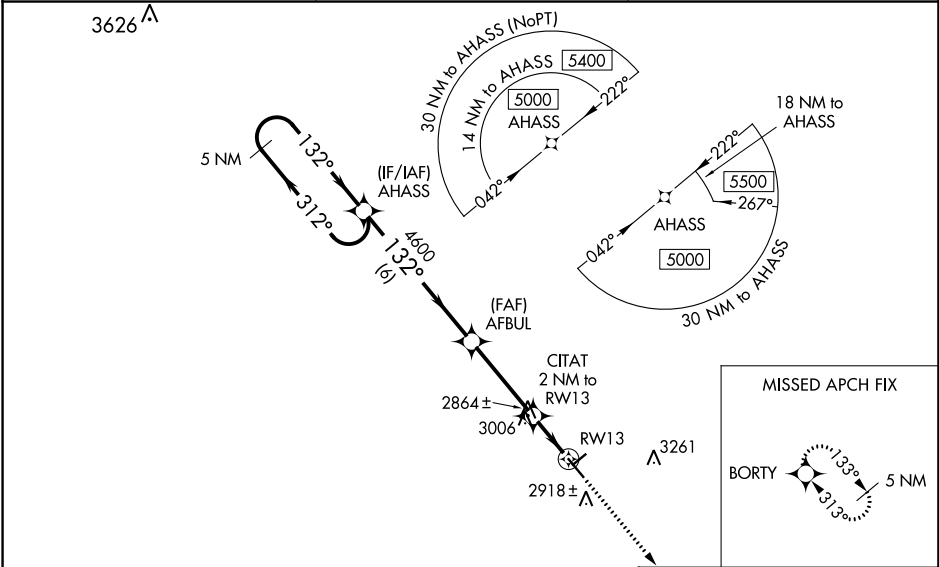
RNAV (GPS) RWY 13  
WINKLER COUNTY (INK)

RNP APCH - GPS.

**⚠** Baro-VNAV NA when using Pecos altimeter setting. For uncompensated Baro-VNAV systems, LNAV/VNAV NA below -20°C or above 54°C. VDP NA with Pecos altimeter setting. Rwy 13 helicopter visibilities reduction below ¾ SM NA. When local altimeter setting not received, use Pecos altimeter setting: increase LPV DA to 3167 feet and all Cats visibilities ¼ SM; increase LNAV/VNAV DA to 3167 feet and all Cats visibilities ¼ SM; increase all MDAs 100 feet and LNAV Cat C visibility ¾ SM and Circling Cat C visibility ¼ SM.

MISSED APPROACH:  
Climb to 5000 direct  
BORTY and hold.

ASOS <b>118.325</b>	FORT WORTH CENTER <b>133.1 298.95</b>	UNICOM <b>123.0 (CTAF) 0</b>
------------------------	--	---------------------------------



5 NM Holding Pattern		VGSI and RNAV glidepath not coincident (VGSI Angle 3.00/TCH 22).		5000	BORTY
GP 3.00° TCH 45		AFBUL 4600		CITAT 2 NM to RW13	
5000		4600		3500	
6 NM		3.4 NM		1.2 NM	
0.8 NM		0.8 NM		0.8 NM	
CATEGORY	A	B	C	D	
LPV DA	3072-¾	250 (300-¾)		NA	
LNAV/VNAV DA	3072-¾	250 (300-¾)		NA	
LNAV MDA	3320-1	498 (500-1)	3320-1⅜ 498 (500-1⅜)	NA	
CIRCLING	3320-1	498 (500-1)	3580-2¼ 758 (800-2¼)	NA	

MIRL Rwy 4-22 and 13-31 0

WINK, TEXAS  
Amdt 1C 02NOV23

31°47'N-103°12'W

WINKLER COUNTY (INK)  
RNAV (GPS) RWY 13

SC-3, 11 JUL 2024 to 08 AUG 2024

SC-3, 11 JUL 2024 to 08 AUG 2024