

Flight Procedure Tracking Form		Action: FLIGHT CHECK	Task Type: IAP	Date Open: 08/02/2017	Task #: 2014102209542505001	Request #: 20141022095425
Procedure: RNAV (GPS) RWY 29 AMDT 1D			Airport ID: KFKA	Airport: FILLMORE COUNTY		Reimbursable #: NO
City: PRESTON	ST: MN	GPS #:	Estimated Chart Date: 03/26/2020		FICO #:	
Fac ID: N/A		Fac. Type:		Specialist: PATRICK COMBS		
Procedure Review						
	Rec'd	Rel'd	Full Name	Comments		
Lead:	09/19/2019	11/13/2019	WARDELL HENNING	12/10/19 J. DuBois		
QA:	11/13/2019					
Liaison:						
Procedure Comments:			Remark Type: INFORMATION			
<p>ACTIVE AIRPORT DATA USED FOR KFKA.</p> <p>CANCEL FDC 9/6974 UPON PUBLICATION.</p> <p>CONTACT: WARDELL HENNING: 405-954-9954</p>						

PRESTON, MINNESOTA

AL-9286 (FAA)

FIG

WAAS CH 70529 W29A	APP CRS 286°	Rwy Idg TDZE Apt Elev	4001 1277 1277
--	------------------------	-----------------------------	---

RNAV (GPS) RWY 29

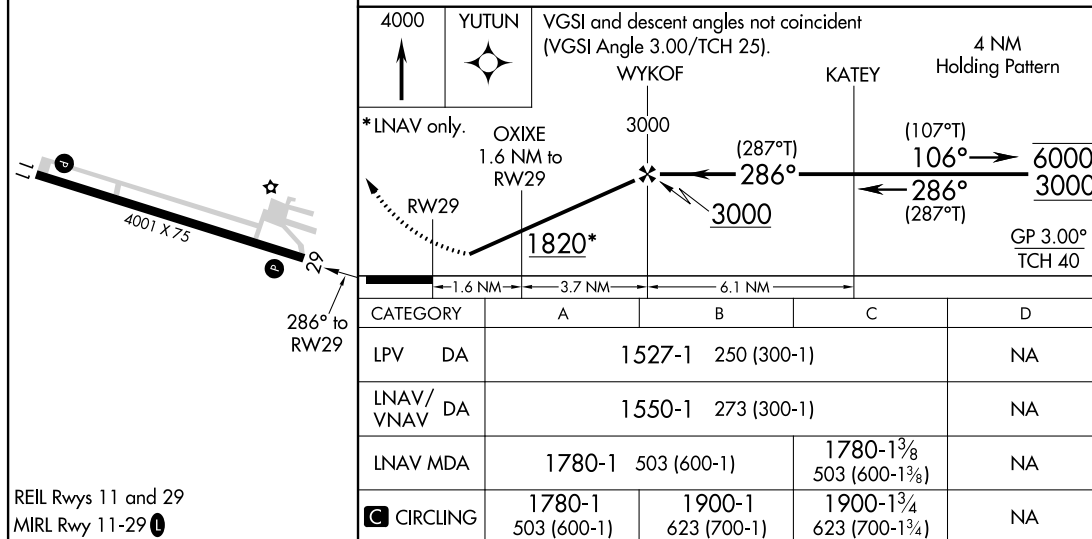
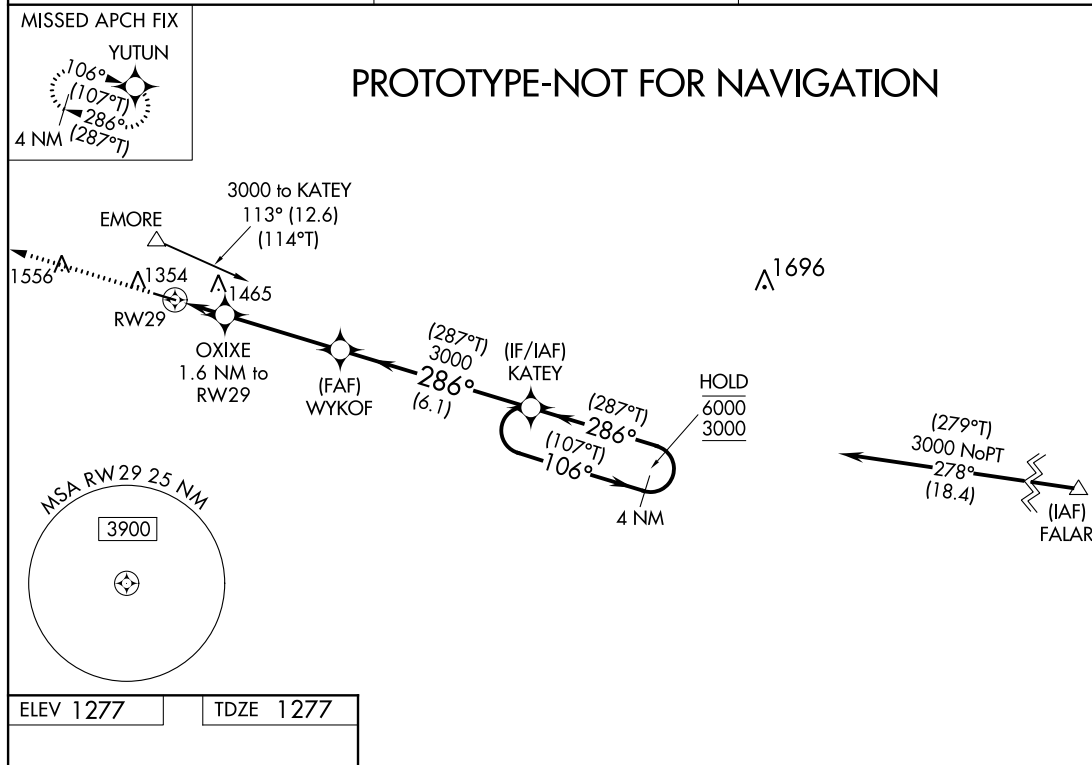
FILLMORE COUNTY (FKA)

RNP APCH.	MISSED APPROACH: Climb to 4000 direct YUTUN and hold
<p>▽</p> <p>⚠ Rwy 29 helicopter visibility reduction below $\frac{3}{4}$ SM NA. For uncompensated Baro-VNAV systems, LNAV/VNAV NA below -17°C or above 54°C.</p>	

AWOS-3
118.55

ROCHESTER APP CON★
119.8 251.125

CTAF
122.90



AUTOMATED AL-9286 RNAV (GPS) RWY 29

NC-1
06 DEC 19
COMPILER: HD
REVIEWER:
DBL CHKR:
EFF: FIG

PRESTON, MINNESOTA

Amdt 1D FIG

43°41'N-92°11'W

FILLMORE COUNTY (FKA)

RNAV (GPS) RWY 29

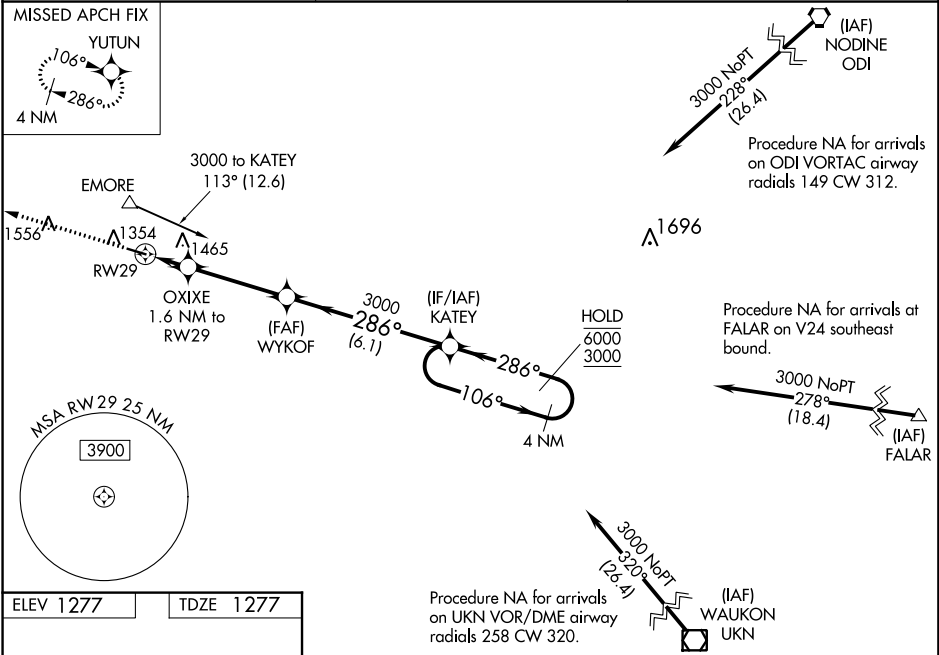
WAAS CH 70529 W29A	APP CRS 286°	Rwy Idg TDZE Apt Elev	4001 1277 1277
--	------------------------	-----------------------------	---

OLD

RNAV (GPS) RWY 29
FILLMORE COUNTY (FKA)

RNP APCH.	<p>⚠ Helicopter visibility reduction below ¾ SM NA. Baro-VNAV NA when using Rochester Intl altimeter setting. For uncompensated Baro-VNAV systems, LNAV/VNAV NA below -17°C (2°F) or above 54°C (130°F). When local altimeter setting not received, use Rochester Intl altimeter setting and increase all DA 51 feet and all MDA 60 feet and increase LNAV/VNAV all Cats and LNAV Cat C visibility ⅓ mile and Circling Cat C visibility ¼ mile.</p>	MISSED APPROACH: Climb to 4000 direct YUTUN and hold
-----------	---	--

AWOS-3 118.55	ROCHESTER APP CON * 119.8 251.125	CTAF 122.9 0
-------------------------	---	------------------------



ELEV 1277	TDZE 1277	4000	YUTUN	VGSI and RNAV glidepath not coincident (VGSI Angle 3.00/TCH 25).	WYKOF	KATEY	4 NM Holding Pattern
		*LNAV only.	OXIXE 1.6 NM to RW29	3000	286°	106°	6000
		RW29	1820*	3000	286°	286°	3000
		1.6 NM	3.7 NM	6.1 NM	GP 3.00° TCH 40		
		CATEGORY	A	B	C	D	
		LPV DA	1527-1	250 (300-1)			NA
		LNAV/VNAV DA	1550-1	273 (300-1)			NA
		LNAV MDA	1700-1	423 (500-1)	1700-1¼ 423 (500-1¼)		NA
		CIRCLING	1700-1 423 (500-1)	1820-1 543 (600-1)	1820-1½ 543 (600-1½)		NA

NM 2 4 6 8
FT 20000 40000 60000

PROC: RNAV GPS RWY 29, A1D
CITY/STATE: PRESTON, MN
APT NAME/ID: FILLMORE COUNTY (KFKA)
1:100K

7. FINAL: LNAV: 1499 AAO

8. FINAL (SDF): LNAV/CIRCLING CAT B / C: 1465 TOWER (27-000286)

12. CIRCLING CAT A: 1399 TREE

