

Flight Procedures Cover Page	Task Action: Flight Check	Task Type: IAP	Estimated Chart Date: 06/17/2021	APWS Task ID: 703C488500934ACF8C98C35DC2AE4493	APWS Project ID: 74DCE1DD89324E3493BBF8BF8C320A1A
Procedure: APPROACH RNAV (GPS) RWY 14 AMDT 2C		Enroute: NO	Specialist: Gorman, Barbara		Agreement Number:
Airport ID: KSHV	Airport Name: SHREVEPORT RGNL		Airport City: SHREVEPORT		State: LA
Facility ID:	Facility Type:	Flight Inspection Remark Type:			

Procedure Comments:  
ACTIVE DATA USED FOR AIRPORT AND RUNWAYS.  
TO CLEAR NOTAM 0/0567.  
CONTACT: ANDREW HENNING (AJV-A432): 405.954.9954

*Digitally signed by*  
**JON DENTON**  
Apr 07, 2021





OLD FIG

SHREVEPORT, LOUISIANA

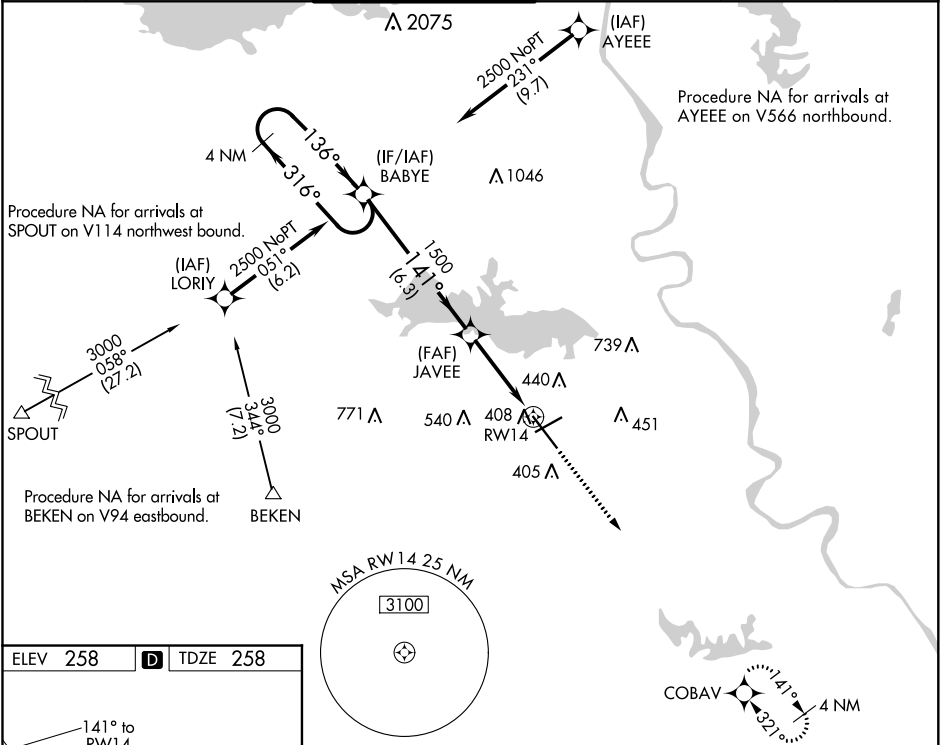
AL-884 (FAA)

20198

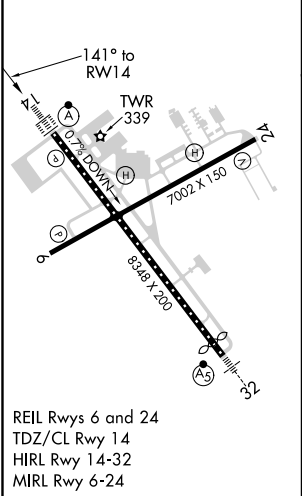
WAAS CH <b>45913</b> <b>W14A</b>	APP CRS <b>141°</b>	Rwy Idg TDZE <b>258</b> Apt Elev <b>258</b>
--	------------------------	---

**RNAV (GPS) RWY 14**  
SHREVEPORT RGNL (SHV)

RNP APCH		ALSIF-2		MISSED APPROACH: Climb to 3000 direct COBAV and hold.	
<div>▲</div> <div>ASR</div>	For inop ALS, increase LNAV Cat C and D visibility to RVR 6000. For uncompensated Baro-VNAV systems, LNAV/VNAV NA below -6°C or above 54°C.	<div>▲</div>	<div>📶</div>		
ATIS 128.45	SHREVEPORT APP CON 119.9 335.55	SHREVEPORT TOWER 121.4 236.775	GND CON 121.175 236.775	CLNC DEL 124.65	CTAF 122.95



ELEV 258	D	TDZE 258
----------	---	----------



4 NM Holding Pattern		BABYE		<div>3000 ↑</div>		<div>COBAV ✦</div>	
2500 ← 316° 136° →		141°		JAVEE 1500		*1.1 NM to RW14	
GP 3.00° TCH 51		1500		*1.1 NM to RW14		*RNAV only.	
		6.3 NM		2.6 NM		1.1 NM	
CATEGORY	A	B	C	D			
LPV DA	458/18		200 (200-½)				
LNAV/VNAV DA	640/40		382 (400-¾)				
LNAV MDA	660/24	402 (500-½)		660/40	402 (500-¾)		
CIRCLING	760-1	502 (600-1)		980-2 722 (800-2)	1100-2¾ 842 (900-2¾)		

SHREVEPORT, LOUISIANA  
Amdt 2B 06DEC18

32°27'N-93°50'W

SHREVEPORT RGNL (SHV)  
**RNAV (GPS) RWY 14**

SC-4, 16 JUL 2020 to 13 AUG 2020



