

Flight Procedures Cover Page	Task Action: FLIGHT CHECK	Task Type: IAP	Estimated Chart Date: 06/12/2025	APWS Task ID: 6FB7BD5BF85C46C6BE47E8D727E79ED9	APWS Project ID: 5A4694DC546C4DA3B95E909E46CAFE5
Procedure: RNAV (GPS) RWY 13 AMDT 1A		Enroute: NO	Specialist: Slane, Cory		Agreement Number:
Airport ID: KMTJ			Airport City: MONTROSE		State: CO
Facility ID:	Facility Type:	Flight Inspection Remark Type: New FC Slot			
<div>Procedure Comments: ACTIVE AIRNAV DATA USED.  CIRCLING CAT C MINIMUM CHANGES. SPEED RESTRICTIONS ADDED. MISSED APPROACH INSTRUCTION CHANGES. CLEARS NOTAM FDC 4/9190.  POC: JOHN BORDY, AJV-A33, 405-954-0980  <div>Digitally signed by <b>ERIC N SUSKI</b> Apr 03, 2025</div></div> <div><div>QUALITY 41 CHECKED</div><div>QUALITY 39 CHECKED</div></div>					

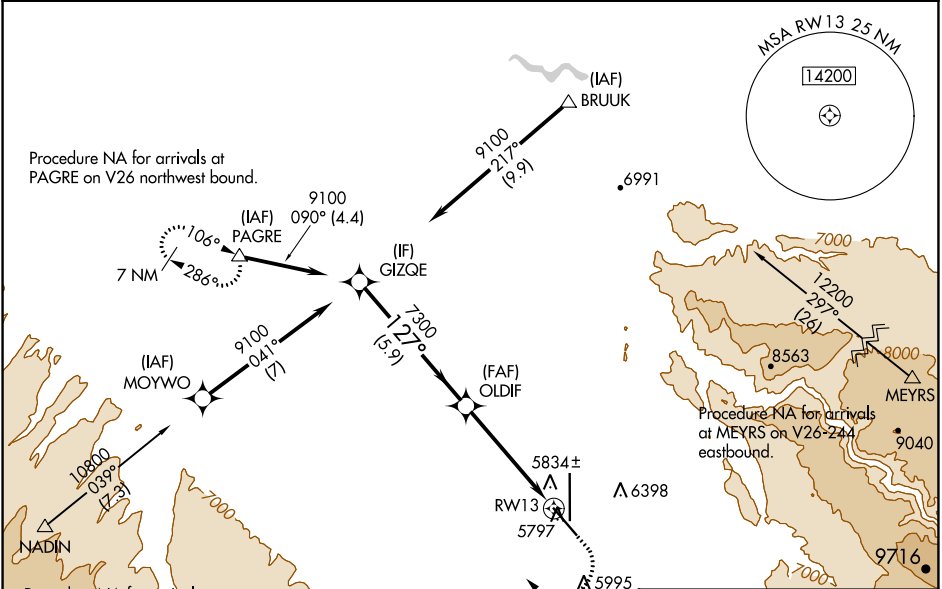
<b>FIPC BASIC FORM</b>							
<b>PROCEDURE:</b> RNAV (GPS) RWY 13 AMDT 1A			<b>AIRPORT NAME:</b> MONTROSE RGNL		<b>AIRPORT ID:</b> KMTJ	<b>SPECIAL CONTROL NO:</b> OG-03-225-25	
<b>FAC ID:</b> KMTJ13.01		<b>CITY:</b> MONTROSE			<b>ST:</b> CO	<b>ORIG CHART DATE:</b> 06/12/2025	
<b>DFL TYPE:</b> PROC/S	<b>THIRD PARTY:</b> <input type="checkbox"/> YES	<b>EST. TIME ON SITE:</b> 0.4	<b>REIMB. NUMBER:</b>		<b>PTS TASK ID:</b> 6FB7BD5BF85C46C6BE47E8D727E79ED9		
<b>PREFLIGHT NOTES</b>							
<b>REVIEWER:</b>					<b>DATE:</b>		
<b>COMMENTS:</b>					<b>CHECK ONE:</b>		
					<input type="checkbox"/> FLT CK REQ <input type="checkbox"/> NFCR <input type="checkbox"/> REJECT		
							<b>YES</b>
					<b>CPV COMPLETE?</b>		<b>X</b>
<b>PROCEDURE RESULTS</b>							
<b>INSPECTION DATE:</b> 04/02/2025		<b>CREW #:</b> VN400	<b>N #:</b> N84	<b>INSTRUMENT PROCEDURE STATUS:</b> <input checked="" type="checkbox"/> SAT <input type="checkbox"/> SAT W/CHANGES <input type="checkbox"/> UNSAT		<b>ARINC CODING:</b> <input checked="" type="checkbox"/> SAT <input type="checkbox"/> SAT/GOLD <input type="checkbox"/> UNSAT	
<b>FLIGHT INSPECTOR SIGNATURE:</b> michael s miller @ 04/02/2025 18:14			<b>PRINTED NAME:</b> MILLER, MICHAEL SCOTT				<b>NOTAM INITIATED?</b> <input type="checkbox"/> YES <input checked="" type="checkbox"/> NO
<b>FLIGHT INSPECTOR REMARKS:</b>							
<b>IN-FLIGHT OBSTACLE REPORT</b>							
<b>OBSTRUCTION ID #:</b>	<b>COORDINATES OR LOCATION:</b>		<b>GNSS ALTITUDE (MSL):</b>		<b>BAROMETRIC ALTITUDE (MSL):</b>		<b>HEIGHT ABOVE GROUND LEVEL:</b>

WAAS CH <b>97344</b> <b>W13A</b>	APP CRS <b>127°</b>	Rwy Idg TDZE <b>5723</b> Apt Elev <b>5759</b>
----------------------------------------	------------------------	-----------------------------------------------------

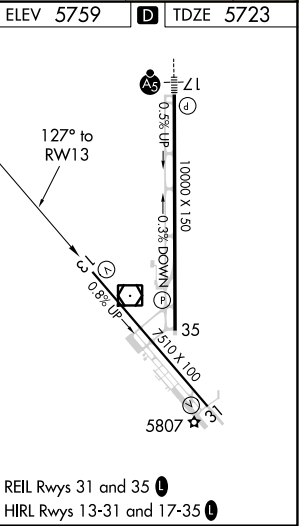
RNAV (GPS) RWY 13  
 MONTROSE RGNL (MTJ)

RNP APCH.	<div> <div> </div> <div> </div> </div> <p>                     Circling NA east of Rwy 17 and northeast of Rwy 31. Circling Rwy 31 NA at night. Rwy 13 helicopter visibility reduction below 1 SM NA. For uncompensated Baro-VNAV systems, LNAV/VNAV NA below -19°C or above 54°C. Straight-in/Circling Rwy 13 at night, operational VGSI required, remain on or above VGSI glidepath until threshold.                 </p>	MISSED APPROACH: (Do not exceed 200K until PAGRE) Climb to 6300 then climbing right turn to 11000 direct PAGRE and hold, continue climb-in-hold to 11000.
-----------	-----------------------------------------------------------------------------------------------------------------------------------------------------------------------------------------------------------------------------------------------------------------------------------------------------------------------------------------------------------------------------------------------------------------------------	-----------------------------------------------------------------------------------------------------------------------------------------------------------

ASOS <b>135.225</b>	DENVER CENTER <b>127.1 343.65</b>	UNICOM <b>122.8 (CTAF) 0</b>
------------------------	--------------------------------------	---------------------------------



Procedure NA for arrivals at PAGRE on V26 northwest bound. Procedure NA for arrivals at NADIN on V244 westbound. Procedure NA for arrivals at MEYRS on V26-244 eastbound.				
VGSI and RNAV glidepath not coincident (VGSI Angle 3.00/TCH 43). GP 3.00° TCH 55 9100 127° 7300 7300 RW13 5.9 NM 4.9 NM				
CATEGORY	A	B	C	D
LPV DA	5973-1		250 (300-1)	
LNAV/VNAV DA	6101-1		378 (400-1)	
LNAV MDA	6160-1	437 (500-1)	6160-1¼	437 (500-1¼)
CIRCLING	6280-1 521 (600-1)	6320-1 561 (600-1)	6380-1¾ 621 (700-1¾)	6800-3 1041 (1100-3)



MONTROSE, COLORADO

AL-668 (FAA)

FIG

WAAS CH <b>97344</b> <b>W13A</b>	APP CRS <b>127°</b>	Rwy Idg TDZE Apt Elev	<b>7510</b> <b>5723</b> <b>5759</b>
----------------------------------------	------------------------	-----------------------------	-------------------------------------------

## RNAV (GPS) RWY 13

MONTROSE RGNL (MTJ)

RNP APCH - GPS.

**⚠** Rwy 13 helicopter visibility reduction below 1 SM NA. Circling NA east of Rwy 17 and northeast of Rwy 31. Circling Rwy 31 NA at night. For uncompensated Baro-VNAV systems, LNAV/VNAV NA below -19°C or above 54°C. Straight-in/Circling Rwy 13 at night, operational VGSI required, remain on or above VGSI glidepath until threshold.

**MISSED APPROACH:** (Do not exceed 200K until PAGRE) Climb to 6300 (6440 when using AJZ altimeter setting) then climbing right turn to 11000 direct PAGRE and hold, continue climb-in-hold to 11000.

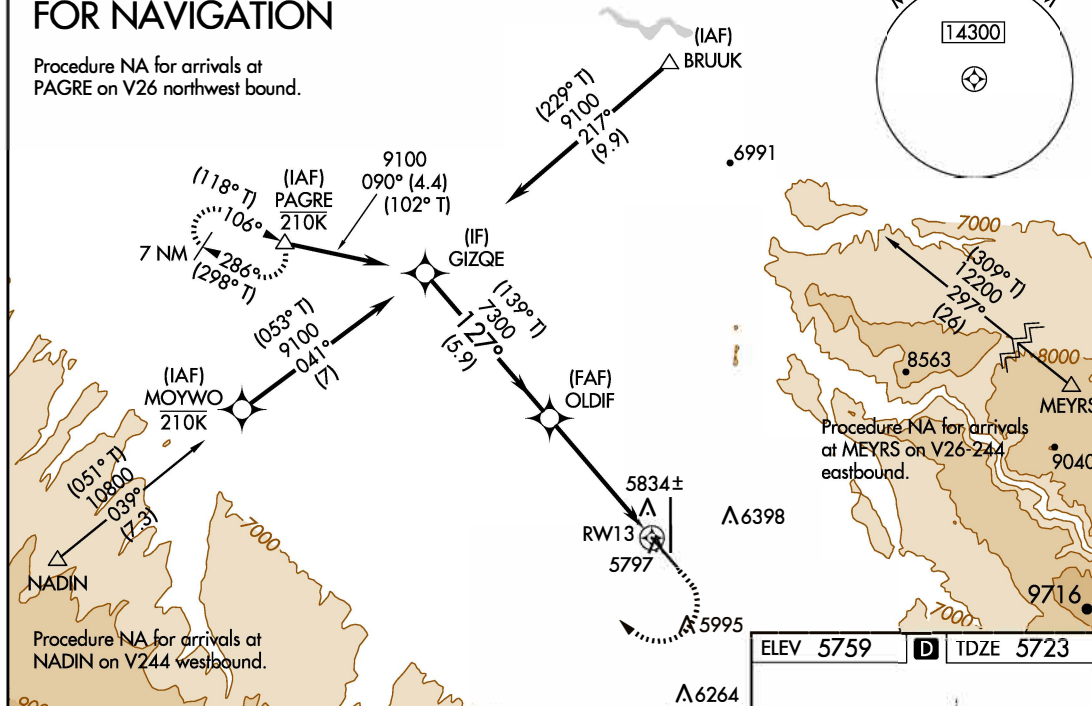
ASOS  
**135.225**

DENVER CENTER  
**127.1 343.65**

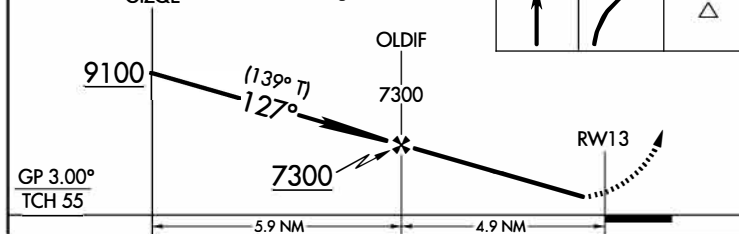
UNICOM  
**122.8 (CTAF) 0**

### PROTOTYPE: NOT FOR NAVIGATION

Procedure NA for arrivals at PAGRE on V26 northwest bound.

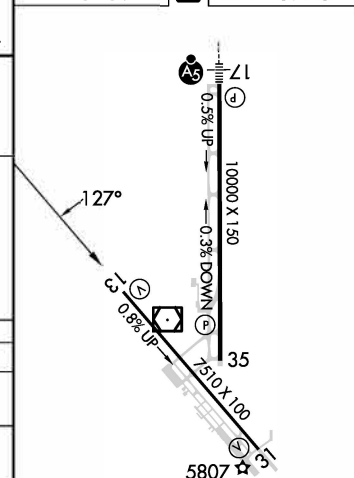


VGSI and RNAV glidepath not coincident (VGSI Angle 3.00/TCH 43).



CATEGORY	A	B	C	D
LPV DA	5973-1	250 (300-1)		
LNAV/VNAV DA	6101-1	378 (400-1)		
LNAV MDA	6160-1	437 (500-1)	6160-1¼	437 (500-1¼)
<b>C</b> CIRCLING	6280-1 521 (600-1)	6320-1 561 (600-1)	6420-1¾ 661 (700-1¾)	6800-3 1041 (1100-3)

ELEV 5759 **D** TDZE 5723



REIL Rwy 31 and 35 **0**  
HIRL Rwy 13-31 and 17-35 **0**

AUTOMATED AL-668 RNAV (GPS) RWY 13  
AUTOMATED AL-668 RNAV (GPS) RWY 13

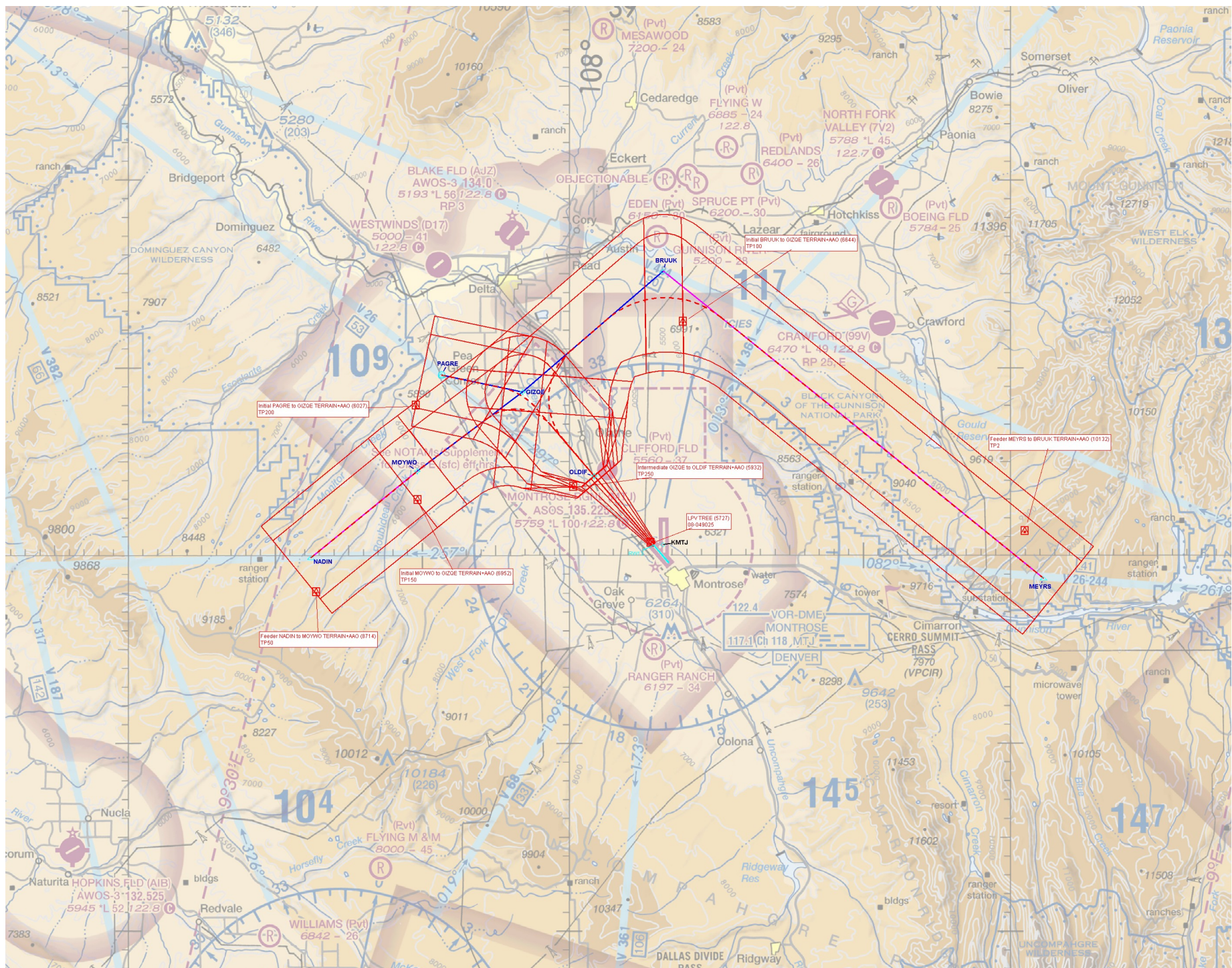
SW-1  
31 JAN 2025  
COMPILER: CG  
REVIEWER:  
DBL CHKR:  
EFF: FIG

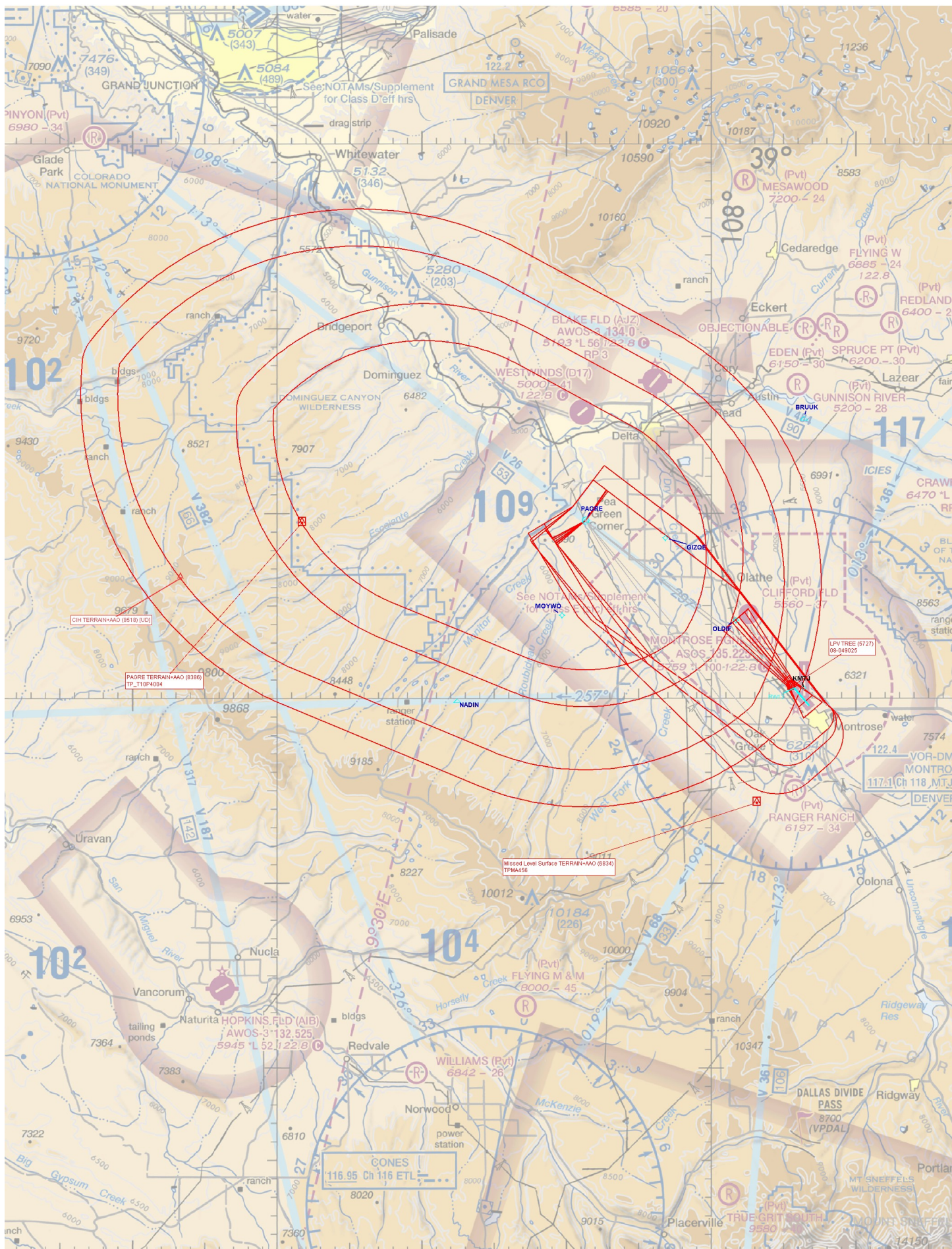
MONTROSE, COLORADO

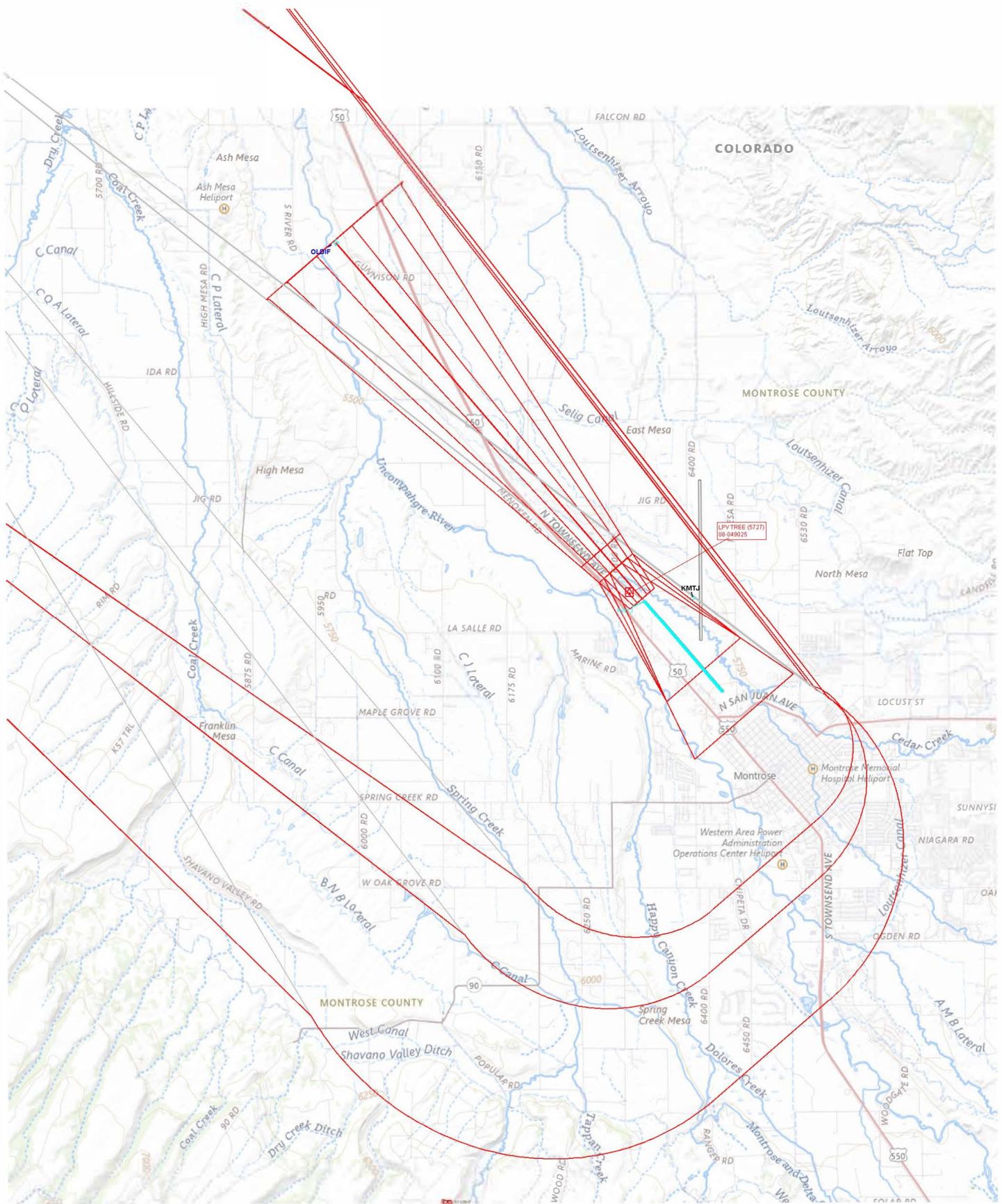
Amdt 1A FIG

38°31'N-107°54'W

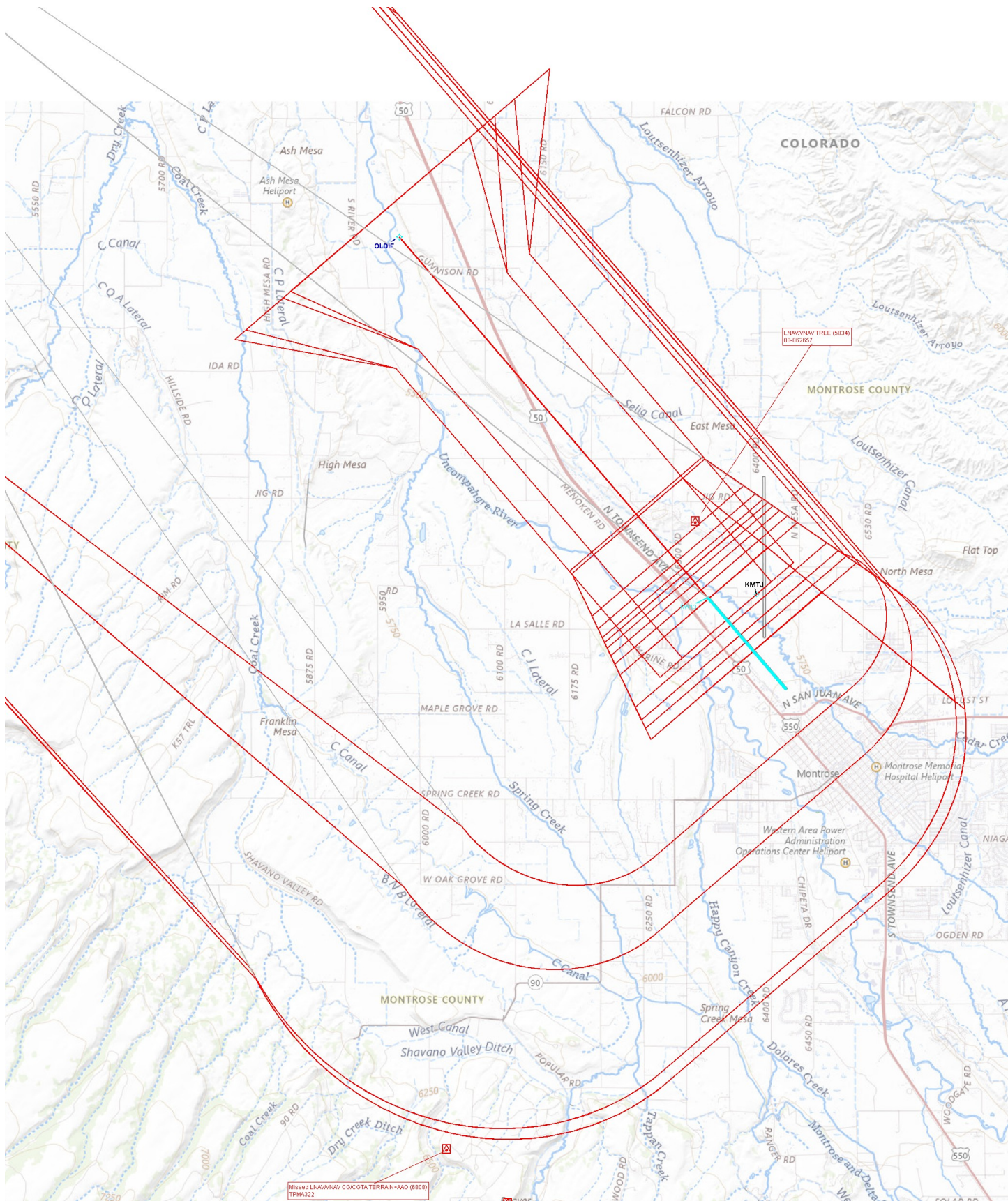
MONTROSE RGNL (MTJ)  
**RNAV (GPS) RWY 13**







Missed Level Surface TERRAIN-AD (B834)  
TPM450



COLORADO

MONTROSE COUNTY

LINAV/NAV TREE (8834)  
06-082607

Missed LINAV/NAV COICOTA TERRAIN+AAO (8808)  
TPMA322

Missed Level Surface TERRAIN+AAO (8834)  
TPMA456

