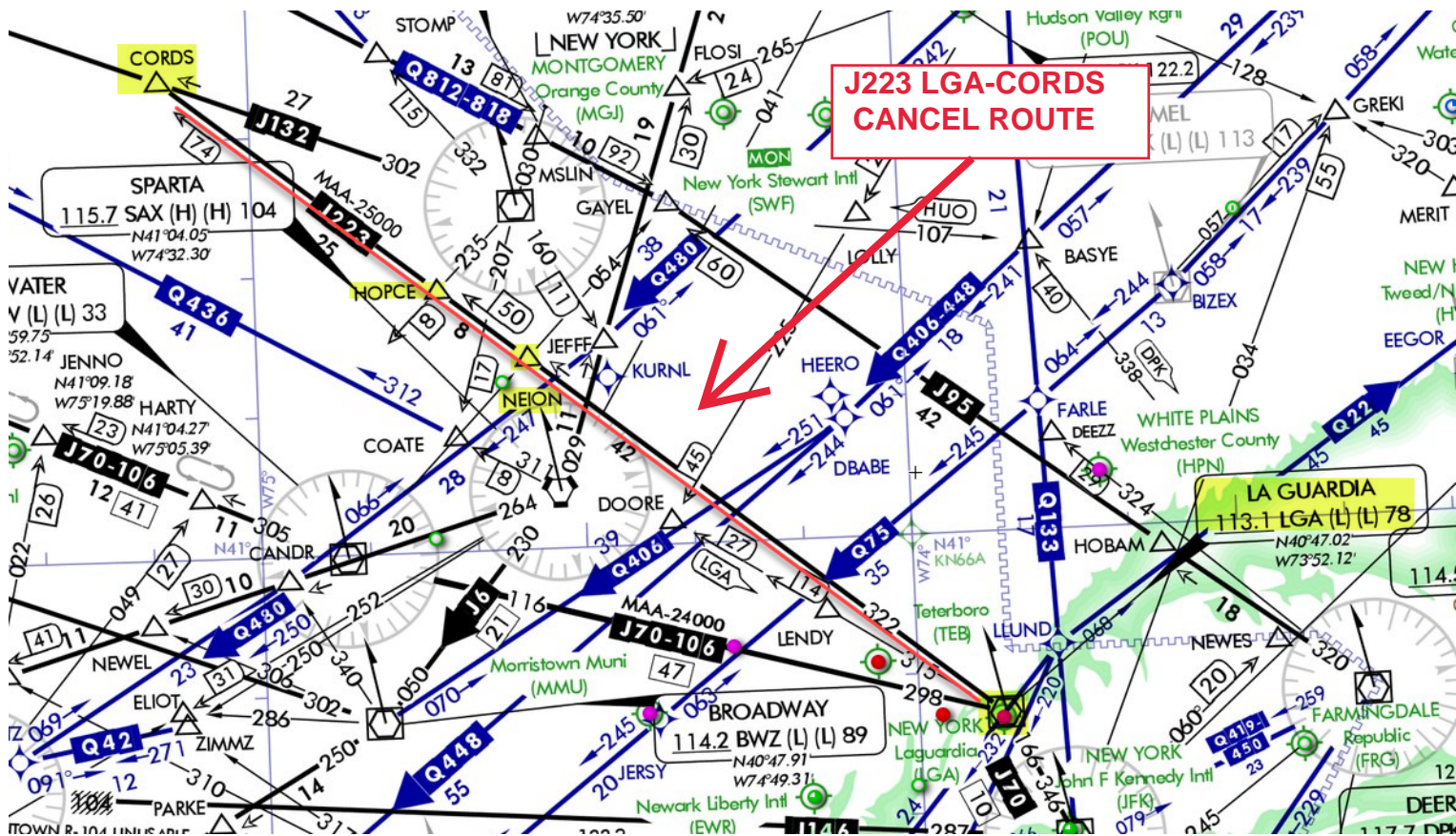


Flight Procedures Cover Page	Task Action: Cancellation	Task Type: Route	Estimated Chart Date: 09/05/2024	APWS Task ID: 6F8D92DE28E74D8B92F9E1410DCDE8D4	APWS Project ID: A1113EF59FE04485B62D421598B907ED
Procedure: J223 LGA VOR_DME, NY TO CORDS, PA		Enroute: YES	Specialist: Smith, Barry		Agreement Number:
Airport ID:			Airport City:		State:
Facility ID:	Facility Type:	Flight Inspection Remark Type:			
<div>Procedure Comments: AIRWAY STARTING POINT: LA GUARDIA (LGA) VDME, NY 404701.37N/0735206.96W ULW VOR MON - AIRSPACE DOCKET 22-AEA-26 CONTACT: ALLAN WILL (AJV-A423) - (405) 954-6103</div> <div><div>QUALITY 32 CHECKED</div><div>Digitally signed by PABLO ORTIZ-JR Apr 04, 2024</div></div>					



J223 LGA-CORDS
CANCEL ROUTE

CORDS

SPARTA

115.7 SAX (H) (H) 104

N41°04.05

W74°32.30

V (L) (L) 33

59.75

52.14

JENNO

N41°09.18

W75°19.88

HARTY

N41°04.27

W75°05.39

J70-106

12

41

NEWEL

ELIOT

ZIMMZ

PARKE

COATE

DOORE

LENDY

BROADWAY

114.2 BWZ (L) (L) 89

N40°47.91

W74°49.31

Newark Liberty Intl

(EWR)

LA GUARDIA

113.1 LGA (L) (L) 78

N40°47.02

W73°52.12

NEW YORK

John F Kennedy Intl

(JFK)

NEW YORK

Laguardia

(LGA)

NEW YORK

Stewart Intl

(SWF)

NEW YORK

Stewart Intl

(SWF)

NEW YORK

Stewart Intl

(SWF)

NEW YORK

Stewart Intl

(SWF)

NEW YORK

Stewart Intl

(SWF)

NEW YORK

Stewart Intl

(SWF)

NEW YORK

Stewart Intl

(SWF)