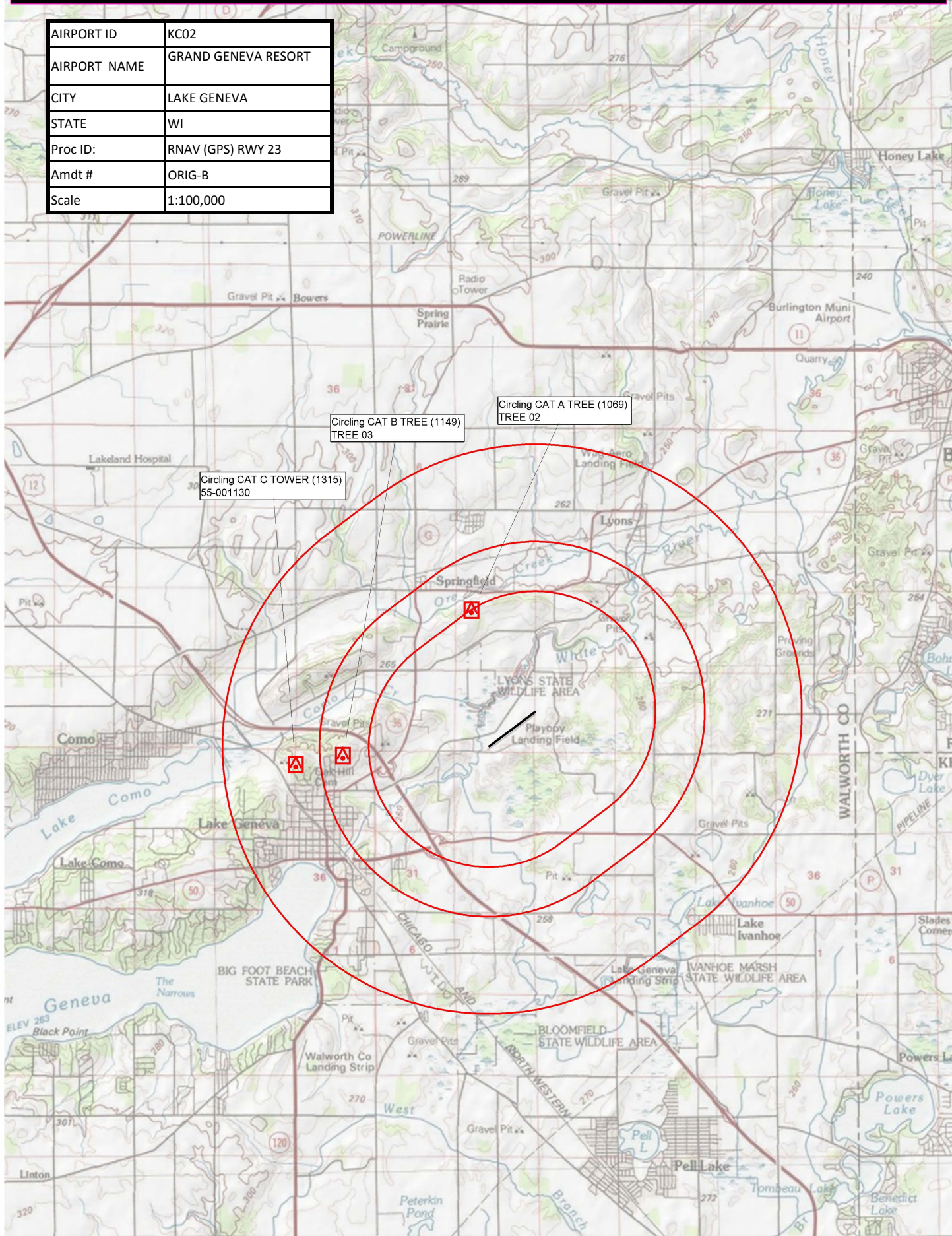



AIRPORT ID	KC02
AIRPORT NAME	GRAND GENEVA RESORT
CITY	LAKE GENEVA
STATE	WI
Proc ID:	RNAV (GPS) RWY 23
Amdt #	ORIG-B
Scale	1:100,000

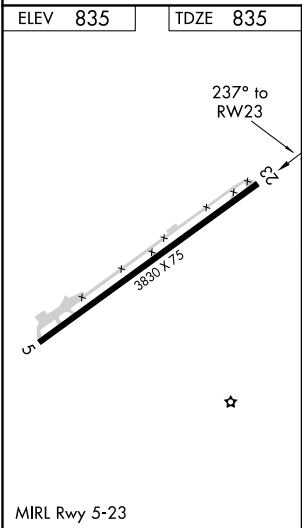
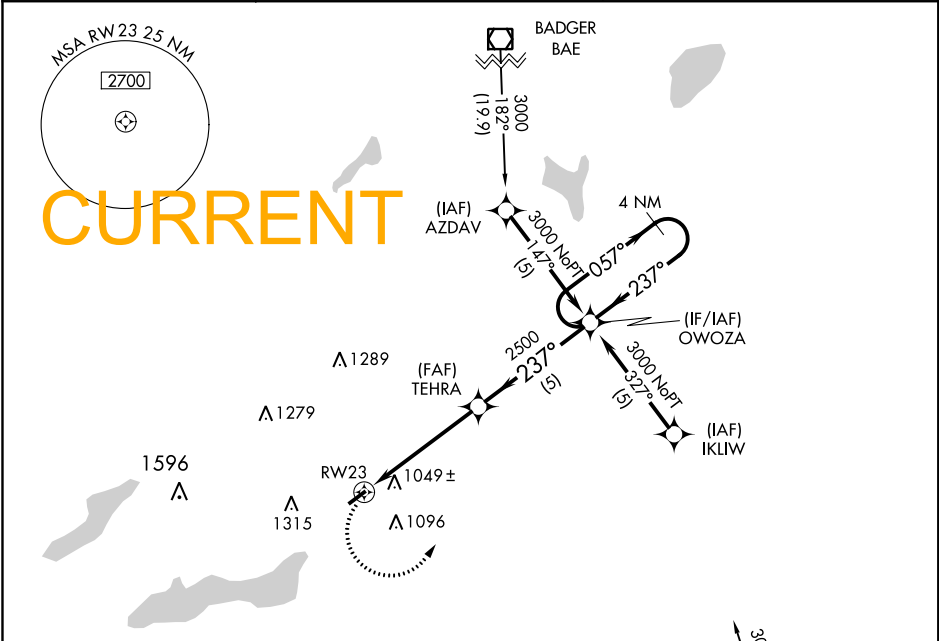




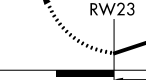
APP CRS	Rwy Idg	3830
237°	TDZE	835
	Apt Elev	835

RNAV (GPS) RWY 23  
GRAND GENEVA RESORT (C02)

 NA	DME/DME RNP-0.3 NA. Procedure NA at night. Rwy 23 helicopter visibility reduction below 1 SM NA. Use Kenosha altimeter setting.	MISSED APPROACH: Climbing left turn to 3000 direct OWOZA and hold.
------------------------------------------------------------------------------------	---------------------------------------------------------------------------------------------------------------------------------	--------------------------------------------------------------------

ENW ASOS 127.175	MILWAUKEE APP CON 135.875	UNICOM 122.8 (CTAF)
---------------------	------------------------------	------------------------



ELEV 835		TDZE 835	
		Visual Segment - Obstacles.	
		Holding Pattern	
		TEHRA	
CATEGORY		A	B
LNAV MDA		1360-1	525 (600-1)
CIRCLING		1500-1 665 (700-1)	1520-1 685 (700-1)

EC-3, 18 JUN 2020 to 16 JUL 2020

EC-3, 18 JUN 2020 to 16 JUL 2020