

## DME DME Assessment Results for RAYZZ1 path CHRGE\_DAAWG

### Results Summary

Flyability:	Completed
DME/DME:	Completed - No Critical DMEs
Name:	Miles CTR Carpenter
Project File:	C:\Users\Miles CTR Carpenter\Desktop\KTPA STARs DME\KTPA RAYZZ STAR DME\KTPA RAYZZ HC.tgs
Output File:	C:\Users\Miles CTR Carpenter\Desktop\KTPA STARs DME\KTPA RAYZZ STAR DME\KTPA [IFPA] RAYZZ1 20201119_1514 EST\CHRGE_DAAWG\KTPA RAYZZ1 RNAV STAR CHRGE DAAWG 20201119_1514 EST.pdf
Procedure Name:	RAYZZ1
Software: DmeDmePlugin:	6.2.0
Date/Time:	11/19/2020 15:14 EST
Databases:	DTED 0max

### Failures

No Failures

### Warnings

GNSS\_ONLY      CHRGE\_\_\_\_\_DAAWG is GNSS Only and was not evaluated

### Notes For Flight Check

CHRGE TO DAAWG SEGMENT GNSS ONLY.

### Flight Plan

Name	Type	Lat/Lon	Altitude (ft)	VNAV Mode	Ground Speed (kts)	Turn Type	Leg Type
CHRGE	WP	N27° 48' 44.480", W084° 49' 55.930"	18000	VNAV	240	FLY_BY	TF
DAAWG	WP	N27° 51' 15.401", W083° 54' 55.522"	18000	VNAV	240	FLY_BY	TF

### Flyability

Flight Type:	RNAV_STAR
Selected Airport:	KTPA [IFPA]
Climb Gradient:	None assigned
Speeds:	200 Ground Speed to 11000 FT
	240 Ground Speed to 18000 FT
	260 Ground Speed to 24000 FT
	340 Ground Speed above 24000 FT
Descent During a Turn:	Allowed
VNAV Mode:	Flight Plan

## DME DME Assessment Results for RAYZZ1 path CHRGE\_DAAWG

DME/DME	
RNP:	RNP 2
Flight Mode:	Manual
Line of Sight (DTED Level 0 Max):	Evaluated
Inertial Drift:	Enabled
Initial Drift:	0.558 NM
INS Drift Rate:	8.0 NM/Hour
Range Mode:	OSV
RNP Edges:	Evaluated
Min DME Range:	3.0 NM
DME Types:	DME, VOR-DME, VORTAC
DME Include Angles:	30 to 150
Critical DMEs:	Not Allowed
DoD Facilities:	Not included
Foreign Facilities:	Included
High DMEs:	Included
Low DMEs:	Included
Terminal DMEs:	Included
Flight Check DMEs:	Not selected
Higher Altitudes:	Not Evaluated
Near Maximum Altitude:	Not Evaluated
Automatic ESVs:	Not enabled
Disabled DMEs:	None

DME/DME (Continued)										
DMEs Used										
#	Name	Lat/Lon	MAGVAR	Range	Type	Source	Critical	Status	Time	Distance

Inertial Drift Segments			
#	Start Location	End Location	Length [NM]

Available DMEs by Waypoints		
Waypoint Before	Waypoint After	DME List
CHRGE	DAAWG	

# DME DME Assessment Results for RAYZZ1 path CHRGD\_DAAWG

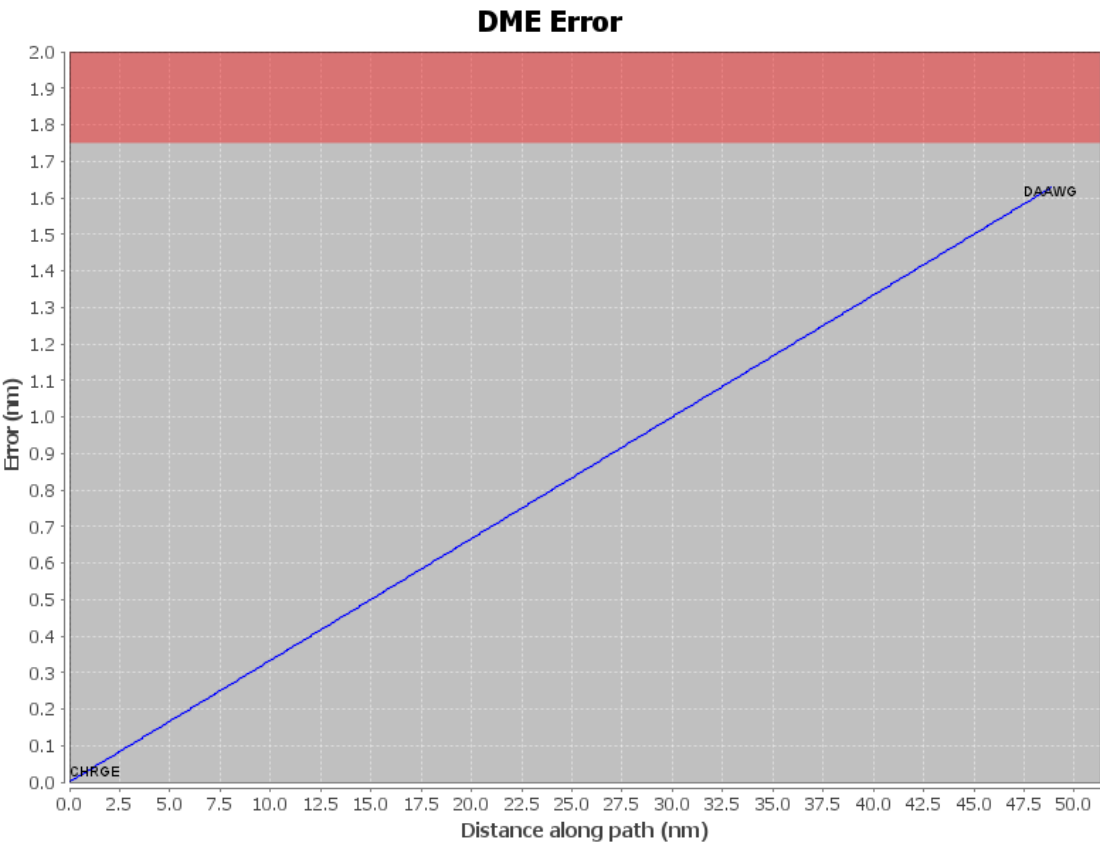
## User Data Files

# File Name

None

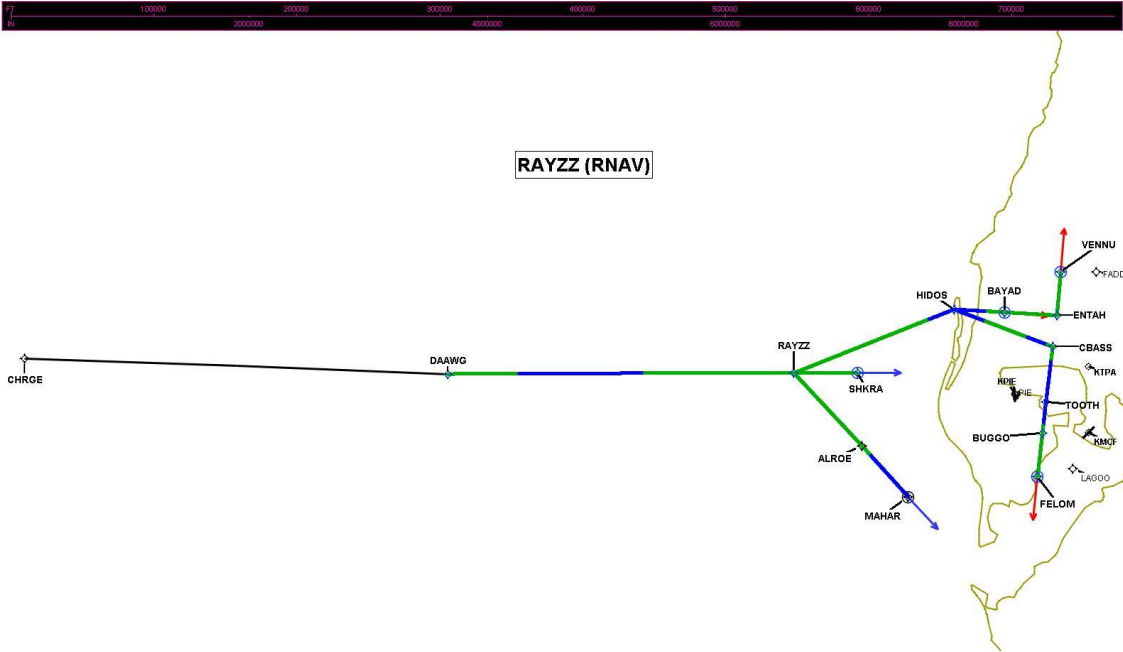
## User DMEs

#	Name	Lat/Lon	MAGVAR	Range	Elevation [ft]	Frequency	Replaces	Status
1	LAL FAA 704224-35 LAL [IFPA]	N27° 59' 10.253", W082° 00' 50.009"	1.0 E	130	133.9	116.0	LAL FAA 704224-35	
ESV:		Bearing [True]: 245.0° to 270.0° Bearing [Mag]: 244.0° to 269.0°				Arc Distance: Out to 95.0 NM Altitude: 7000.0 to 18000.0 ft		
2	CTY FAA 704013-34 CTY [IFPA]	N29° 35' 56.403", W083° 02' 55.651"	2.0 W	40	33.8	112.0	CTY FAA 704013-34	
ESV:		Bearing [True]: 188.0° to 197.0° Bearing [Mag]: 190.0° to 199.0°				Arc Distance: Out to 109.0 NM Altitude: 10000.0 to 20000.0 ft		
3	OCF FAA 714002-10 OCF [IFPA]	N29° 10' 38.918", W082° 13' 34.802"	0.0 E	40	78.3	113.7	OCF FAA 714002-10	
ESV:		Bearing [True]: 210.0° to 235.0° Bearing [Mag]: 210.0° to 235.0°				Arc Distance: Out to 138.0 NM Altitude: 14000.0 to 18000.0 ft		
4	OCF FAA 714002-037 OCF [IFPA]	N29° 10' 38.918", W082° 13' 34.802"	0.0 E	40	78.3	113.7	OCF FAA 714002-037	
ESV:		Bearing [True]: 190.0° to 220.0° Bearing [Mag]: 190.0° to 220.0°				Arc Distance: Out to 77.0 NM Altitude: 5200.0 to 6100.0 ft		
5	OCF FAA 714002-17 OCF [IFPA]	N29° 10' 38.918", W082° 13' 34.802"	0.0 E	40	78.3	113.7	OCF FAA 714002-17	
ESV:		Bearing [True]: 205.0° to 227.0° Bearing [Mag]: 205.0° to 227.0°				Arc Distance: Out to 105.0 NM Altitude: 6000.0 to 18000.0 ft		
6	LAL FAA 704224-082 LAL [IFPA]	N27° 59' 10.253", W082° 00' 50.009"	1.0 E	130	133.9	116.0	LAL FAA 704224-082	
ESV:		Bearing [True]: 251.0° to 306.0° Bearing [Mag]: 250.0° to 305.0°				Arc Distance: Out to 51.0 NM Altitude: 2900.0 to 6100.0 ft		



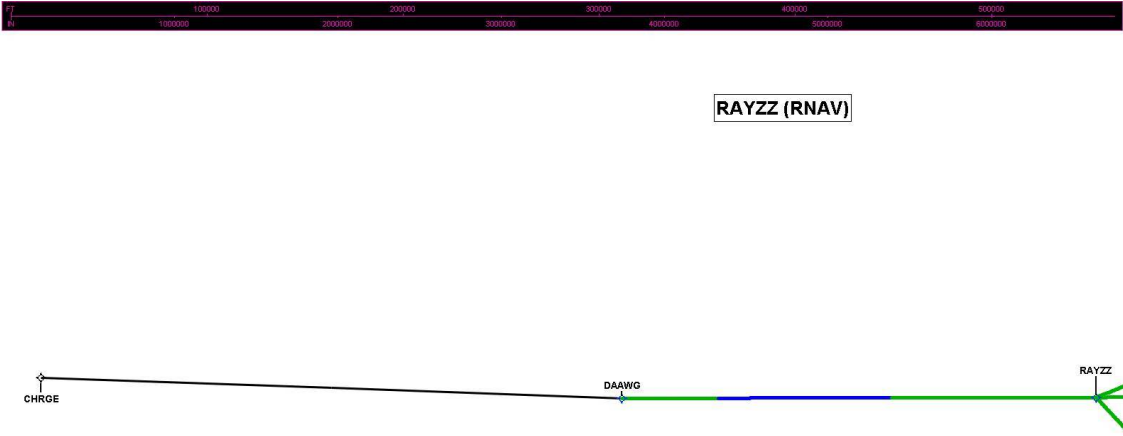
DME DME Assessment Results for RAYZZ1 path CHRGD\_DAAWG

Graphic Depiction 1



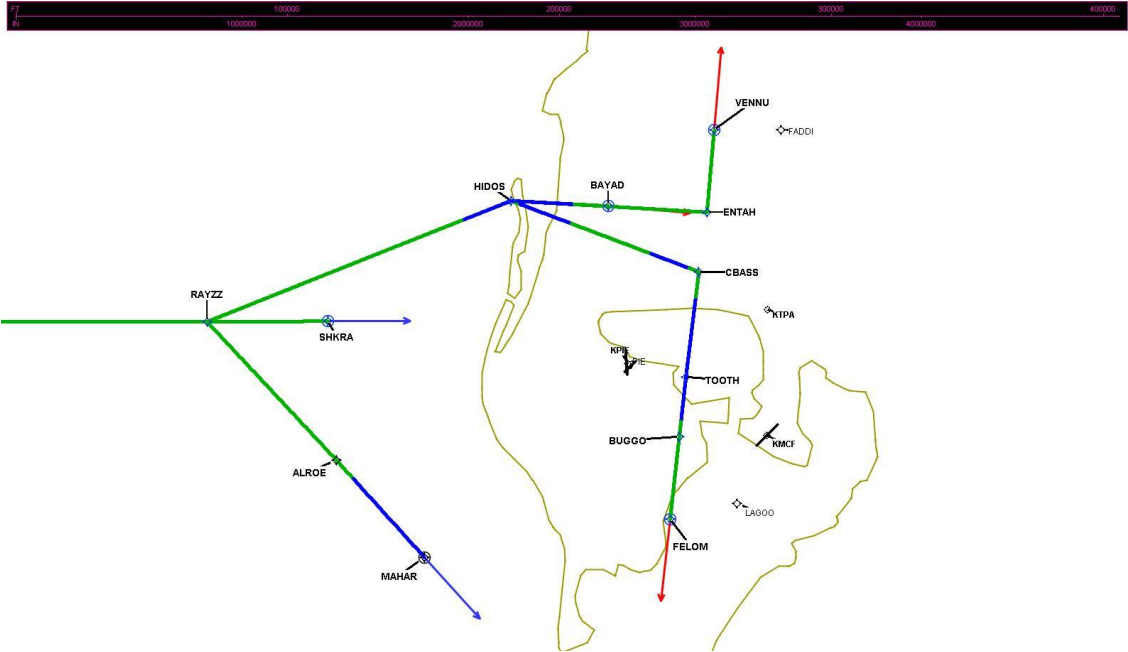
DME DME Assessment Results for RAYZZ1 path CHRGE\_DAAWG

Graphic Depiction 2



DME DME Assessment Results for RAYZZ1 path CHRGD\_DAAWG

Graphic Depiction 3



## DME DME Assessment Results for RAYZZ1 path DAAWG\_FELOM

### Results Summary

Flyability:	Completed
DME/DME:	Completed - No Critical DMEs
Name:	Miles CTR Carpenter
Project File:	C:\Users\Miles CTR Carpenter\Desktop\KTPA STARs DME\KTPA RAYZZ STAR DME\KTPA RAYZZ HC.tgs
Output File:	C:\Users\Miles CTR Carpenter\Desktop\KTPA STARs DME\KTPA RAYZZ STAR DME\KTPA [IFPA] RAYZZ1 20201119_1514 EST\DAAWG_FELOM\KTPA RAYZZ1 RNAV STAR DAAWG FELOM 20201119_1514 EST.pdf
Procedure Name:	RAYZZ1
Software: DmeDmePlugin:	6.2.0
Date/Time:	11/19/2020 15:14 EST
Databases:	DTED 0max

### Failures

No Failures

### Warnings

No Warnings

### Notes For Flight Check

CHRG TO DAAWG SEGMENT GNSS ONLY.

### Flight Plan

Name	Type	Lat/Lon	Altitude (ft)	VNAV Mode	Ground Speed (kts)	Turn Type	Leg Type
DAAWG	WP	N27° 51' 15.401", W083° 54' 55.522"	18000	VNAV	240	FLY_BY	TF
RAYZZ	WP	N27° 54' 49.670", W083° 10' 07.190"	10000	VNAV	240	FLY_BY	TF
HIDOS	WP	N28° 03' 42.590", W082° 50' 07.140"	8000	VNAV	210	FLY_BY	TF
CBASS	WP	N28° 00' 25.500", W082° 36' 53.270"	6000	VNAV	210	FLY_BY	TF
TOOTH	WP	N27° 54' 00.480", W082° 37' 08.700"	3000	VNAV	210	FLY_BY	TF
BUGGO	WP	N27° 50' 23.970", W082° 37' 14.520"	3000	VNAV	210	FLY_BY	TF
FELOM	WP	N27° 45' 23.233", W082° 37' 22.593"	3000	VNAV	210	FLY_OVER	TF

### Flyability

Flight Type:	RNAV_STAR
Selected Airport:	KTPA [IFPA]
Climb Gradient:	None assigned
Speeds:	200 Ground Speed to 11000 FT
	240 Ground Speed to 18000 FT
	260 Ground Speed to 24000 FT
	340 Ground Speed above 24000 FT
Descent During a Turn:	Allowed
VNAV Mode:	Flight Plan



## DME DME Assessment Results for RAYZZ1 path DAAWG\_FELOM

DME/DME	
RNP:	RNP 2
Flight Mode:	Manual
Line of Sight (DTED Level 0 Max):	Evaluated
Inertial Drift:	Enabled
Initial Drift:	0.558 NM
INS Drift Rate:	8.0 NM/Hour
Range Mode:	OSV
RNP Edges:	Evaluated
Min DME Range:	3.0 NM
DME Types:	DME, VOR-DME, VORTAC
DME Include Angles:	30 to 150
Critical DMEs:	Not Allowed
DoD Facilities:	Not included
Foreign Facilities:	Included
High DMEs:	Included
Low DMEs:	Included
Terminal DMEs:	Included
Flight Check DMEs:	Not selected
Higher Altitudes:	Not Evaluated
Near Maximum Altitude:	Not Evaluated
Automatic ESVs:	Not enabled
Disabled DMEs:	None

DME/DME (Continued)										
DMEs Used										
#	Name	Lat/Lon	MAGVAR	Range	Type	Source	Critical	Status	Time	Distance
1	LAL	N27° 59' 10.253", W082° 00' 50.009"	1.0 E	130	H	IFPA	NO	Enabled	44.4 %	44.2 %
2	PIE	N27° 54' 27.952", W082° 41' 03.513"	5.0 W	130	H	IFPA	NO	Enabled	58.4 %	58.8 %
3	CTY	N29° 35' 56.403", W083° 02' 55.651"	2.0 W	40	L	IFPA	NO	Enabled	9 %	9.4 %
4	OCF	N29° 10' 38.918", W082° 13' 34.802"	0.0 E	40	L	IFPA	NO	Enabled	48.7 %	50.5 %

Flight Check DME Selection						
Distance [NM]	Selected DMEs					Alternate
0.0	OCF	PIE				
1.3	OCF	PIE	LAL			
7.0	OCF	LAL				
8.1						
22.6	OCF	LAL				
22.9	CTY	LAL	OCF			
25.9	CTY	PIE	LAL	OCF		
31.1	OCF	PIE	LAL			
40.9	OCF	PIE				
56.5						
59.7	OCF	PIE				
60.2						
63.5	LAL	PIE				
68.7						
71.1	LAL	PIE				
71.9	OCF	LAL	PIE			
73.2	OCF	LAL				
73.4						
80.8	LAL	PIE				

# DME DME Assessment Results for RAYZZ1 path DAAWG\_FELOM

## Inertial Drift Segments

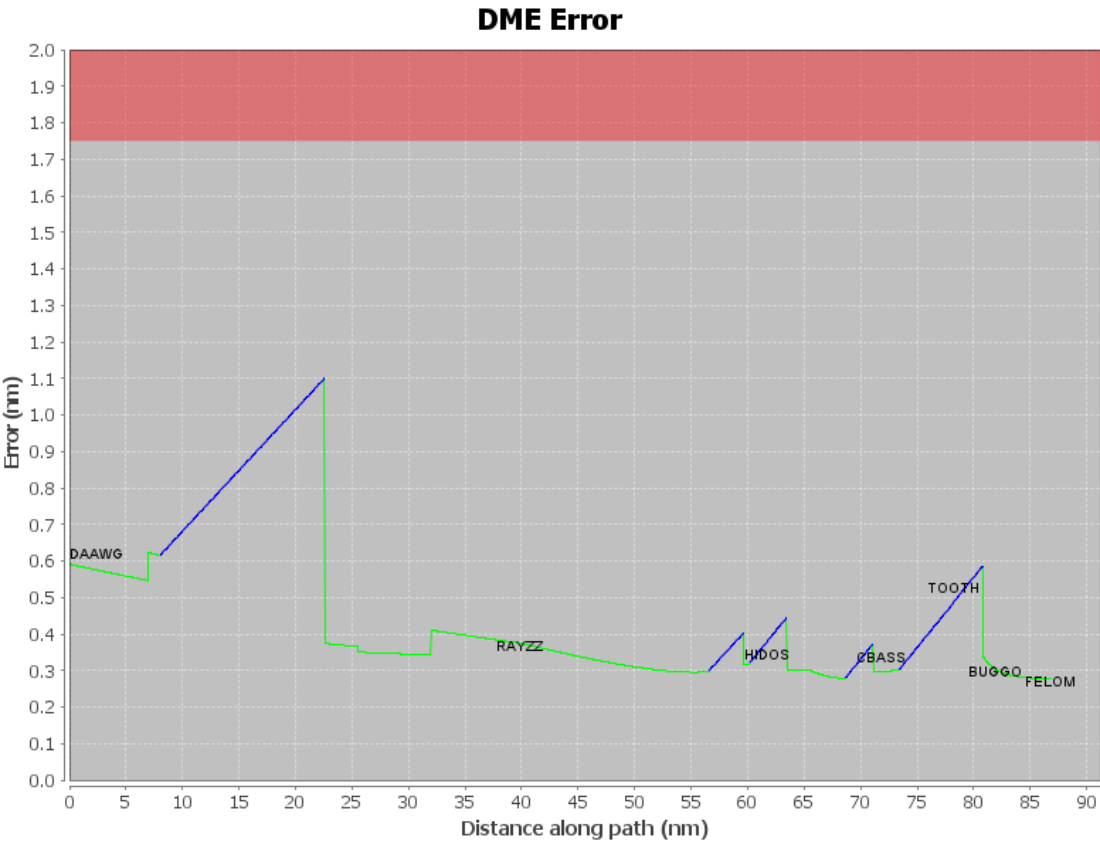
#	Start Location	End Location	Length [NM]
1	N27° 51' 59.932", W083° 45' 51.800"	N27° 53' 18.656", W083° 29' 31.895"	14.532
2	N28° 02' 18.451", W082° 53' 17.265"	N28° 03' 42.590", W082° 50' 07.140"	3.1288
3	N28° 03' 34.129", W082° 49' 32.938"	N28° 02' 40.489", W082° 45' 56.357"	3.3158
4	N28° 01' 16.545", W082° 40' 18.308"	N28° 00' 36.851", W082° 37' 38.829"	2.4432
5	N27° 58' 47.496", W082° 36' 57.201"	N27° 51' 23.336", W082° 37' 12.925"	7.3998

## Available DMEs by Waypoints

Waypoint Before	Waypoint After	DME List
DAAWG	RAYZZ	OCF, LAL, CTY, PIE
RAYZZ	HIDOS	OCF, LAL, PIE
HIDOS	CBASS	OCF, LAL, PIE
CBASS	TOOTH	OCF, LAL, PIE
TOOTH	BUGGO	LAL, PIE
BUGGO	FELOM	LAL, PIE

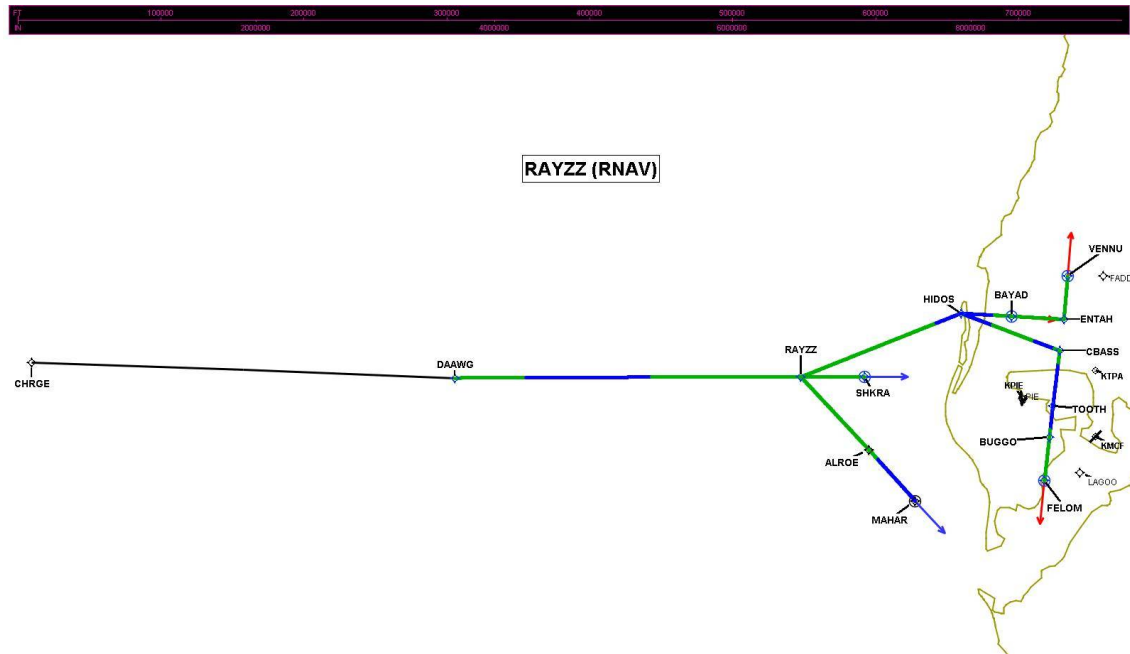
## User Data Files

#	File Name							
None								
User DMEs								
#	Name	Lat/Lon	MAGVAR	Range	Elevation [ft]	Frequency	Replaces	Status
1	LAL FAA 704224-35 LAL [IFPA]	N27° 59' 10.253", W082° 00' 50.009"	1.0 E	130	133.9	116.0	LAL FAA 704224-35	
ESV:		Bearing [True]: 245.0° to 270.0° Bearing [Mag]: 244.0° to 269.0°				Arc Distance: Out to 95.0 NM Altitude: 7000.0 to 18000.0 ft		
2	CTY FAA 704013-34 CTY [IFPA]	N29° 35' 56.403", W083° 02' 55.651"	2.0 W	40	33.8	112.0	CTY FAA 704013-34	
ESV:		Bearing [True]: 188.0° to 197.0° Bearing [Mag]: 190.0° to 199.0°				Arc Distance: Out to 109.0 NM Altitude: 10000.0 to 20000.0 ft		
3	OCF FAA 714002-10 OCF [IFPA]	N29° 10' 38.918", W082° 13' 34.802"	0.0 E	40	78.3	113.7	OCF FAA 714002-10	
ESV:		Bearing [True]: 210.0° to 235.0° Bearing [Mag]: 210.0° to 235.0°				Arc Distance: Out to 138.0 NM Altitude: 14000.0 to 18000.0 ft		
4	OCF FAA 714002-037 OCF [IFPA]	N29° 10' 38.918", W082° 13' 34.802"	0.0 E	40	78.3	113.7	OCF FAA 714002-037	
ESV:		Bearing [True]: 190.0° to 220.0° Bearing [Mag]: 190.0° to 220.0°				Arc Distance: Out to 77.0 NM Altitude: 5200.0 to 6100.0 ft		
5	OCF FAA 714002-17 OCF [IFPA]	N29° 10' 38.918", W082° 13' 34.802"	0.0 E	40	78.3	113.7	OCF FAA 714002-17	
ESV:		Bearing [True]: 205.0° to 227.0° Bearing [Mag]: 205.0° to 227.0°				Arc Distance: Out to 105.0 NM Altitude: 6000.0 to 18000.0 ft		
6	LAL FAA 704224-082 LAL [IFPA]	N27° 59' 10.253", W082° 00' 50.009"	1.0 E	130	133.9	116.0	LAL FAA 704224-082	
ESV:		Bearing [True]: 251.0° to 306.0° Bearing [Mag]: 250.0° to 305.0°				Arc Distance: Out to 51.0 NM Altitude: 2900.0 to 6100.0 ft		



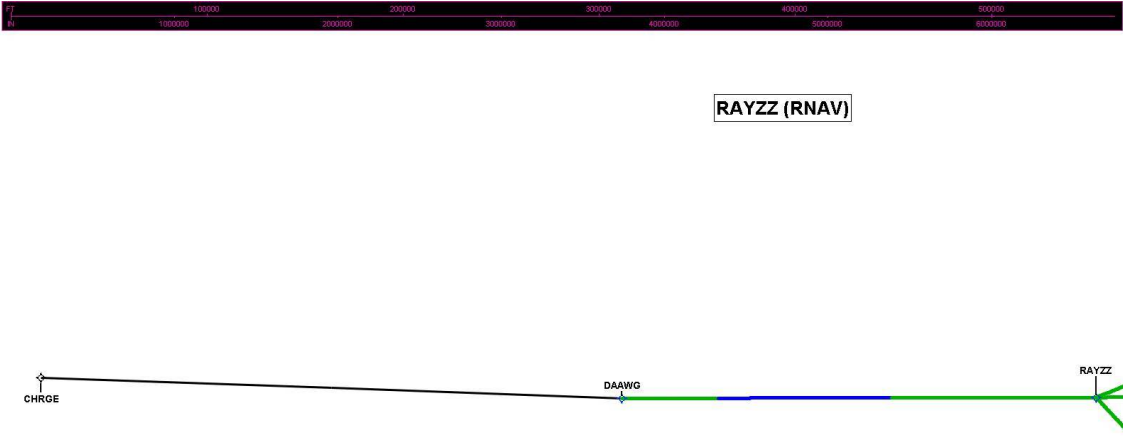
DME DME Assessment Results for RAYZZ1 path DAAWG\_FELOM

Graphic Depiction 1



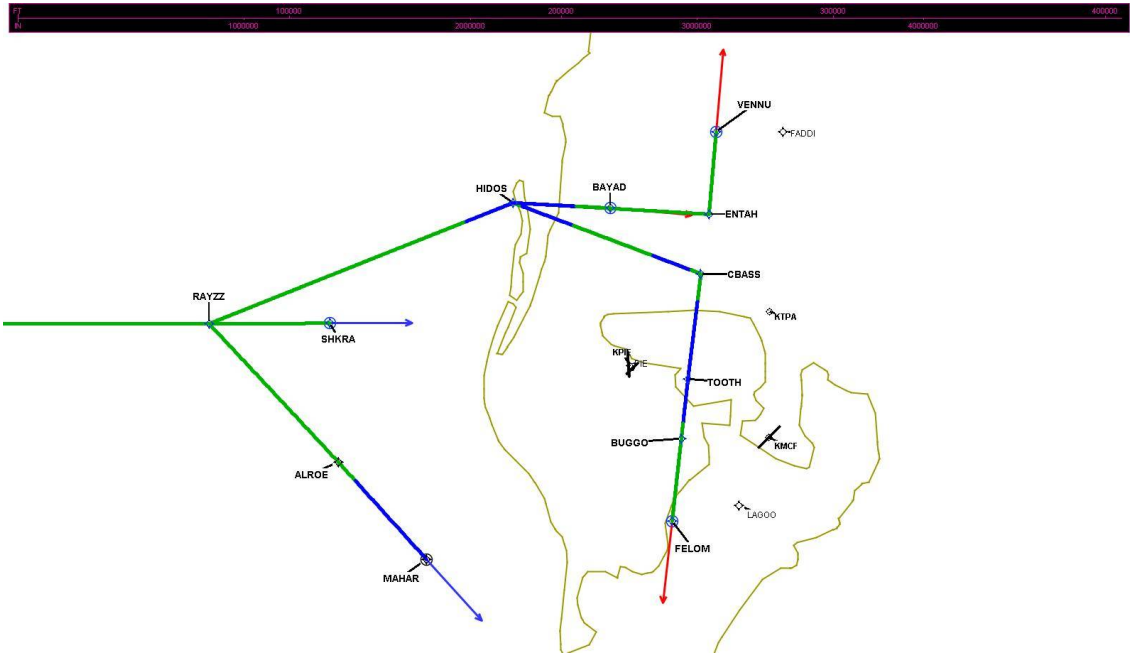
DME DME Assessment Results for RAYZZ1 path DAAWG\_FELOM

Graphic Depiction 2



DME DME Assessment Results for RAYZZ1 path DAAWG\_FELOM

Graphic Depiction 3



## DME DME Assessment Results for RAYZZ1 path HIDOS\_BAYAD

### Results Summary

Flyability:	Completed
DME/DME:	Completed - No Critical DMEs
Name:	Miles CTR Carpenter
Project File:	C:\Users\Miles CTR Carpenter\Desktop\KTPA STARs DME\KTPA RAYZZ STAR DME\KTPA RAYZZ HC.tgs
Output File:	C:\Users\Miles CTR Carpenter\Desktop\KTPA STARs DME\KTPA RAYZZ STAR DME\KTPA [IFPA] RAYZZ1 20201119_1514 EST\HIDOS_BAYAD\KTPA RAYZZ1 RNAV STAR HIDOS BAYAD 20201119_1514 EST.pdf
Procedure Name:	RAYZZ1
Software: DmeDmePlugin:	6.2.0
Date/Time:	11/19/2020 15:14 EST
Databases:	DTED 0max

### Failures

No Failures

### Warnings

No Warnings

### Notes For Flight Check

CHRG TO DAAWG SEGMENT GNSS ONLY.

### Flight Plan

Name	Type	Lat/Lon	Altitude (ft)	VNAV Mode	Ground Speed (kts)	Turn Type	Leg Type
HIDOS	WP	N28° 03' 42.590", W082° 50' 07.140"	8000	VNAV	210	FLY_BY	TF
BAYAD	WP	N28° 03' 54.110", W082° 43' 28.210"	6000	VNAV	240	FLY_OVER	TF

### Flyability

Flight Type:	RNAV_STAR
Selected Airport:	KTPA [IFPA]
Climb Gradient:	None assigned
Speeds:	200 Ground Speed to 11000 FT
	240 Ground Speed to 18000 FT
	260 Ground Speed to 24000 FT
	340 Ground Speed above 24000 FT
Descent During a Turn:	Allowed
VNAV Mode:	Flight Plan

## DME DME Assessment Results for RAYZZ1 path HIDOS\_BAYAD

DME/DME	
RNP:	RNP 2
Flight Mode:	Manual
Line of Sight (DTED Level 0 Max):	Evaluated
Inertial Drift:	Enabled
Initial Drift:	0.558 NM
INS Drift Rate:	8.0 NM/Hour
Range Mode:	OSV
RNP Edges:	Evaluated
Min DME Range:	3.0 NM
DME Types:	DME, VOR-DME, VORTAC
DME Include Angles:	30 to 150
Critical DMEs:	Not Allowed
DoD Facilities:	Not included
Foreign Facilities:	Included
High DMEs:	Included
Low DMEs:	Included
Terminal DMEs:	Included
Flight Check DMEs:	Not selected
Higher Altitudes:	Not Evaluated
Near Maximum Altitude:	Not Evaluated
Automatic ESVs:	Not enabled
Disabled DMEs:	None

DME/DME (Continued)										
DMEs Used										
#	Name	Lat/Lon	MAGVAR	Range	Type	Source	Critical	Status	Time	Distance
1	LAL	N27° 59' 10.253", W082° 00' 50.009"	1.0 E	130	H	IFPA	NO	Enabled	33.6 %	34.7 %
2	PIE	N27° 54' 27.952", W082° 41' 03.513"	5.0 W	130	H	IFPA	NO	Enabled	33.6 %	34.7 %
3	OCF	N29° 10' 38.918", W082° 13' 34.802"	0.0 E	40	L	IFPA	NO	Enabled	33.6 %	34.7 %

Flight Check DME Selection						
Distance [NM]	Selected DMEs					Alternate
0.0						
3.8	OCF	LAL	PIE			

Inertial Drift Segments			
#	Start Location	End Location	Length [NM]
1	N28° 03' 42.590", W082° 50' 07.140"	N28° 03' 50.154", W082° 45' 46.456"	3.8457

Available DMEs by Waypoints		
Waypoint Before	Waypoint After	DME List
HIDOS	BAYAD	OCF, LAL, PIE



# DME DME Assessment Results for RAYZZ1 path HIDOS\_BAYAD

## User Data Files

# File Name

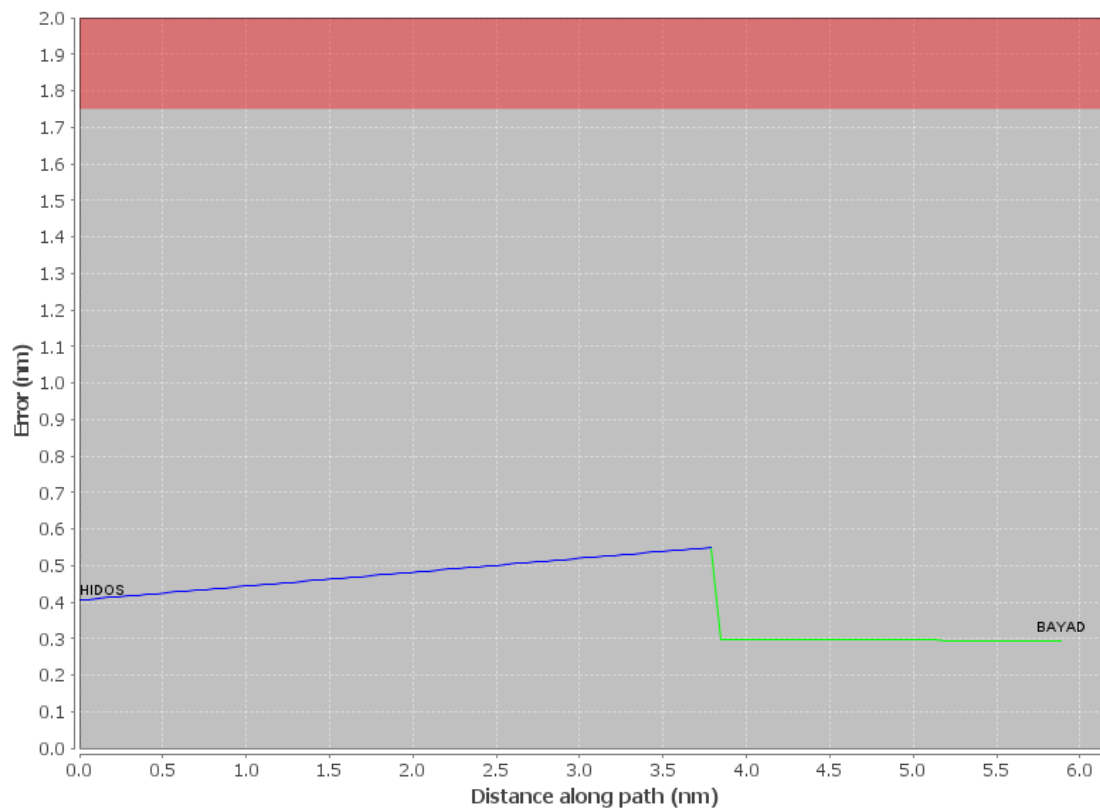
None

## User DMEs

#	Name	Lat/Lon	MAGVAR	Range	Elevation [ft]	Frequency	Replaces	Status
1	LAL FAA 704224-35 LAL [IFPA]	N27° 59' 10.253", W082° 00' 50.009"	1.0 E	130	133.9	116.0	LAL FAA 704224-35	
ESV:		Bearing [True]: 245.0° to 270.0° Bearing [Mag]: 244.0° to 269.0°				Arc Distance: Out to 95.0 NM Altitude: 7000.0 to 18000.0 ft		
2	CTY FAA 704013-34 CTY [IFPA]	N29° 35' 56.403", W083° 02' 55.651"	2.0 W	40	33.8	112.0	CTY FAA 704013-34	
ESV:		Bearing [True]: 188.0° to 197.0° Bearing [Mag]: 190.0° to 199.0°				Arc Distance: Out to 109.0 NM Altitude: 10000.0 to 20000.0 ft		
3	OCF FAA 714002-10 OCF [IFPA]	N29° 10' 38.918", W082° 13' 34.802"	0.0 E	40	78.3	113.7	OCF FAA 714002-10	
ESV:		Bearing [True]: 210.0° to 235.0° Bearing [Mag]: 210.0° to 235.0°				Arc Distance: Out to 138.0 NM Altitude: 14000.0 to 18000.0 ft		
4	OCF FAA 714002-037 OCF [IFPA]	N29° 10' 38.918", W082° 13' 34.802"	0.0 E	40	78.3	113.7	OCF FAA 714002-037	
ESV:		Bearing [True]: 190.0° to 220.0° Bearing [Mag]: 190.0° to 220.0°				Arc Distance: Out to 77.0 NM Altitude: 5200.0 to 6100.0 ft		
5	OCF FAA 714002-17 OCF [IFPA]	N29° 10' 38.918", W082° 13' 34.802"	0.0 E	40	78.3	113.7	OCF FAA 714002-17	
ESV:		Bearing [True]: 205.0° to 227.0° Bearing [Mag]: 205.0° to 227.0°				Arc Distance: Out to 105.0 NM Altitude: 6000.0 to 18000.0 ft		
6	LAL FAA 704224-082 LAL [IFPA]	N27° 59' 10.253", W082° 00' 50.009"	1.0 E	130	133.9	116.0	LAL FAA 704224-082	
ESV:		Bearing [True]: 251.0° to 306.0° Bearing [Mag]: 250.0° to 305.0°				Arc Distance: Out to 51.0 NM Altitude: 2900.0 to 6100.0 ft		

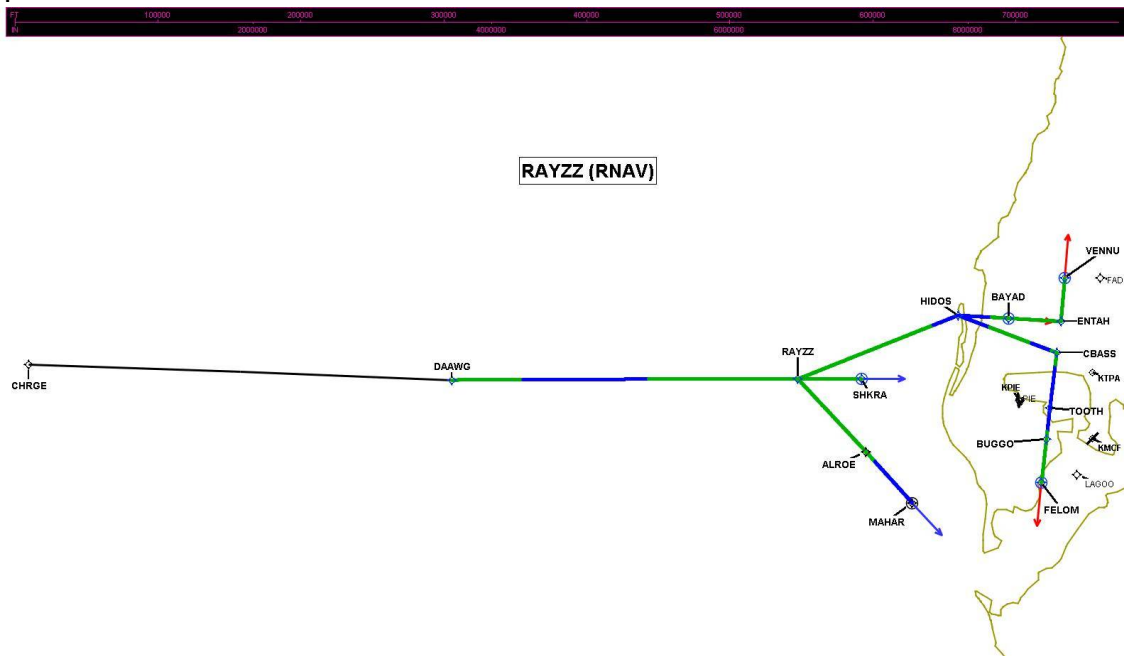
## DME DME Assessment Results for RAYZZ1 path HIDOS\_BAYAD

### DME Error



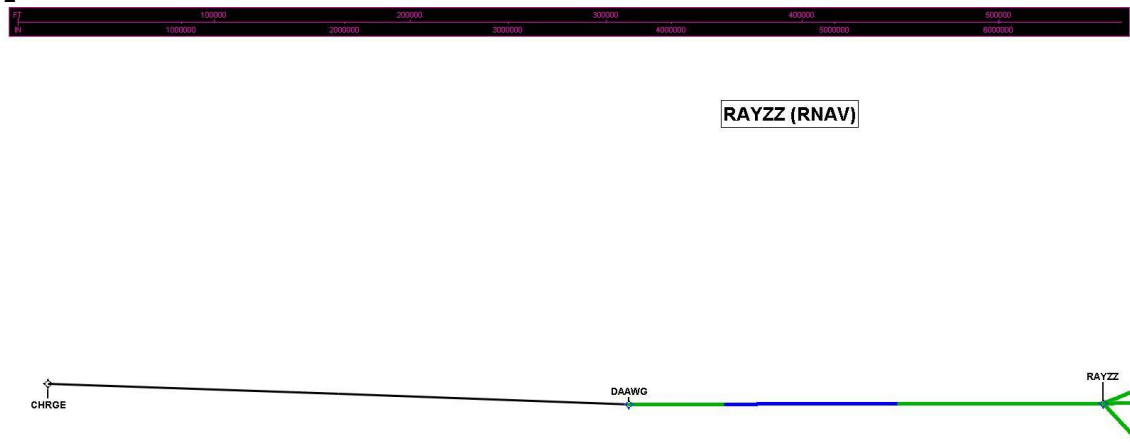
# DME DME Assessment Results for RAYZZ1 path HIDOS\_BAYAD

Graphic Depiction 1



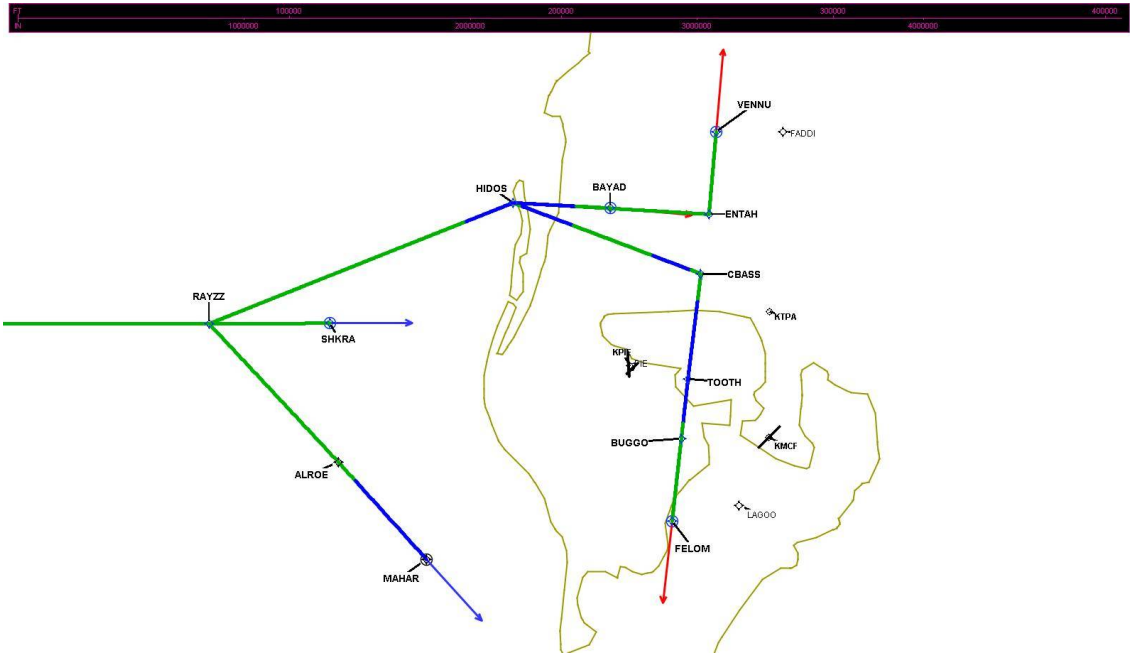
DME DME Assessment Results for RAYZZ1 path HIDOS\_BAYAD

Graphic Depiction 2



DME DME Assessment Results for RAYZZ1 path HIDOS\_BAYAD

Graphic Depiction 3



## DME DME Assessment Results for RAYZZ1 path HIDOS\_VENNU

### Results Summary

Flyability:	Completed
DME/DME:	Completed - No Critical DMEs
Name:	Miles CTR Carpenter
Project File:	C:\Users\Miles CTR Carpenter\Desktop\KTPA STARs DME\KTPA RAYZZ STAR DME\KTPA RAYZZ HC.tgs
Output File:	C:\Users\Miles CTR Carpenter\Desktop\KTPA STARs DME\KTPA RAYZZ STAR DME\KTPA [IFPA] RAYZZ1 20201119_1514 EST\HIDOS_VENNU\KTPA RAYZZ1 RNAV STAR HIDOS VENNU 20201119_1514 EST.pdf
Procedure Name:	RAYZZ1
Software: DmeDmePlugin:	6.2.0
Date/Time:	11/19/2020 15:14 EST
Databases:	DTED 0max

### Failures

No Failures

### Warnings

No Warnings

### Notes For Flight Check

CHRG TO DAAWG SEGMENT GNSS ONLY.

### Flight Plan

Name	Type	Lat/Lon	Altitude (ft)	VNAV Mode	Ground Speed (kts)	Turn Type	Leg Type
HIDOS	WP	N28° 03' 42.590", W082° 50' 07.140"	8000	VNAV	210	FLY_BY	TF
ENTAH	WP	N28° 04' 03.270", W082° 36' 41.640"	6000	VNAV	240	FLY_BY	TF
VENNU	WP	N28° 09' 04.079", W082° 36' 41.640"	3000	VNAV	240	FLY_OVER	TF

### Flyability

Flight Type:	RNAV_STAR
Selected Airport:	KTPA [IFPA]
Climb Gradient:	None assigned
Speeds:	200 Ground Speed to 11000 FT
	240 Ground Speed to 18000 FT
	260 Ground Speed to 24000 FT
	340 Ground Speed above 24000 FT
Descent During a Turn:	Allowed
VNAV Mode:	Flight Plan

## DME DME Assessment Results for RAYZZ1 path HIDOS\_VENNU

DME/DME	
RNP:	RNP 2
Flight Mode:	Manual
Line of Sight (DTED Level 0 Max):	Evaluated
Inertial Drift:	Enabled
Initial Drift:	0.558 NM
INS Drift Rate:	8.0 NM/Hour
Range Mode:	OSV
RNP Edges:	Evaluated
Min DME Range:	3.0 NM
DME Types:	DME, VOR-DME, VORTAC
DME Include Angles:	30 to 150
Critical DMEs:	Not Allowed
DoD Facilities:	Not included
Foreign Facilities:	Included
High DMEs:	Included
Low DMEs:	Included
Terminal DMEs:	Included
Flight Check DMEs:	Not selected
Higher Altitudes:	Not Evaluated
Near Maximum Altitude:	Not Evaluated
Automatic ESVs:	Not enabled
Disabled DMEs:	None

DME/DME (Continued)										
DMEs Used										
#	Name	Lat/Lon	MAGVAR	Range	Type	Source	Critical	Status	Time	Distance
1	LAL	N27° 59' 10.253", W082° 00' 50.009"	1.0 E	130	H	IFPA	NO	Enabled	76.2 %	77.3 %
2	PIE	N27° 54' 27.952", W082° 41' 03.513"	5.0 W	130	H	IFPA	NO	Enabled	76.2 %	77.3 %
3	OCF	N29° 10' 38.918", W082° 13' 34.802"	0.0 E	40	L	IFPA	NO	Enabled	57.7 %	56.9 %

Flight Check DME Selection						
Distance [NM]	Selected DMEs					Alternate
0.0						
3.8	OCF	LAL	PIE			
13.5	LAL	PIE				

Inertial Drift Segments			
#	Start Location	End Location	Length [NM]
1	N28° 03' 42.590", W082° 50' 07.140"	N28° 03' 49.424", W082° 45' 46.546"	3.844

Available DMEs by Waypoints		
Waypoint Before	Waypoint After	DME List
HIDOS	ENTAH	OCF, LAL, PIE
ENTAH	VENNU	OCF, LAL, PIE

# DME DME Assessment Results for RAYZZ1 path HIDOS\_VENNU

## User Data Files

# File Name

None

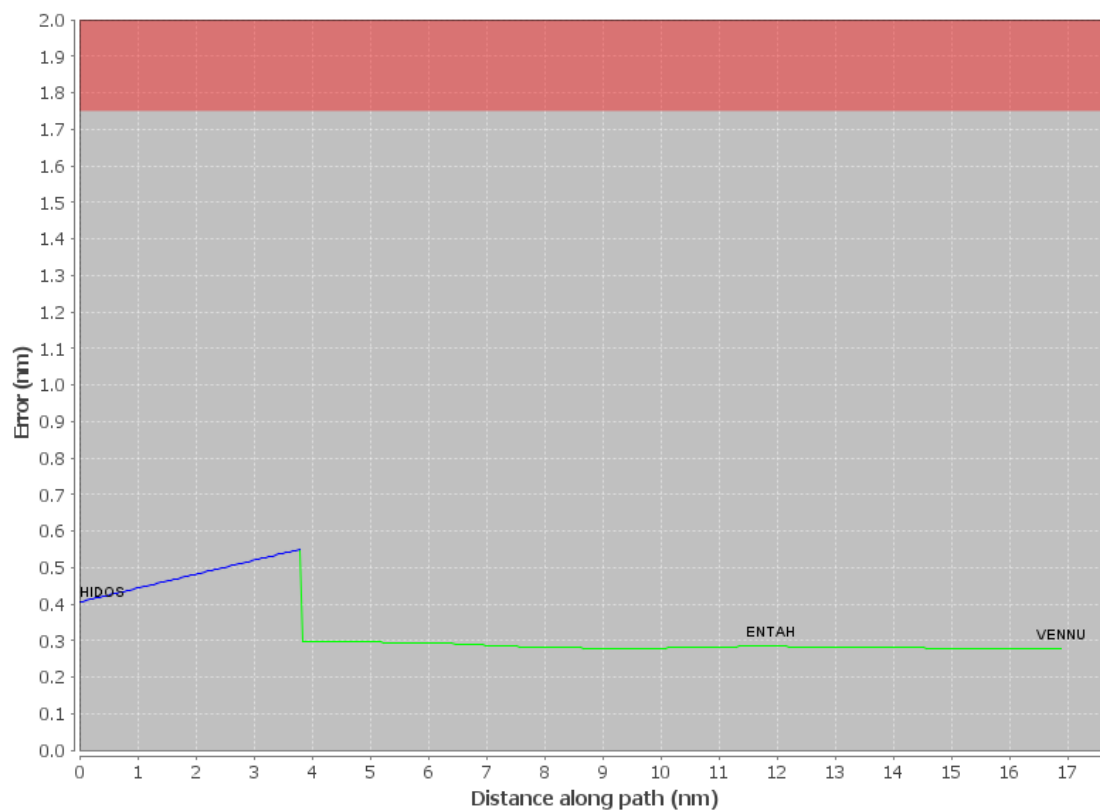
## User DMEs

#	Name	Lat/Lon	MAGVAR	Range	Elevation [ft]	Frequency	Replaces	Status
1	LAL FAA 704224-35 LAL [IFPA]	N27° 59' 10.253", W082° 00' 50.009"	1.0 E	130	133.9	116.0	LAL FAA 704224-35	
ESV:		Bearing [True]: 245.0° to 270.0° Bearing [Mag]: 244.0° to 269.0°				Arc Distance: Out to 95.0 NM Altitude: 7000.0 to 18000.0 ft		
2	CTY FAA 704013-34 CTY [IFPA]	N29° 35' 56.403", W083° 02' 55.651"	2.0 W	40	33.8	112.0	CTY FAA 704013-34	
ESV:		Bearing [True]: 188.0° to 197.0° Bearing [Mag]: 190.0° to 199.0°				Arc Distance: Out to 109.0 NM Altitude: 10000.0 to 20000.0 ft		
3	OCF FAA 714002-10 OCF [IFPA]	N29° 10' 38.918", W082° 13' 34.802"	0.0 E	40	78.3	113.7	OCF FAA 714002-10	
ESV:		Bearing [True]: 210.0° to 235.0° Bearing [Mag]: 210.0° to 235.0°				Arc Distance: Out to 138.0 NM Altitude: 14000.0 to 18000.0 ft		
4	OCF FAA 714002-037 OCF [IFPA]	N29° 10' 38.918", W082° 13' 34.802"	0.0 E	40	78.3	113.7	OCF FAA 714002-037	
ESV:		Bearing [True]: 190.0° to 220.0° Bearing [Mag]: 190.0° to 220.0°				Arc Distance: Out to 77.0 NM Altitude: 5200.0 to 6100.0 ft		
5	OCF FAA 714002-17 OCF [IFPA]	N29° 10' 38.918", W082° 13' 34.802"	0.0 E	40	78.3	113.7	OCF FAA 714002-17	
ESV:		Bearing [True]: 205.0° to 227.0° Bearing [Mag]: 205.0° to 227.0°				Arc Distance: Out to 105.0 NM Altitude: 6000.0 to 18000.0 ft		
6	LAL FAA 704224-082 LAL [IFPA]	N27° 59' 10.253", W082° 00' 50.009"	1.0 E	130	133.9	116.0	LAL FAA 704224-082	
ESV:		Bearing [True]: 251.0° to 306.0° Bearing [Mag]: 250.0° to 305.0°				Arc Distance: Out to 51.0 NM Altitude: 2900.0 to 6100.0 ft		



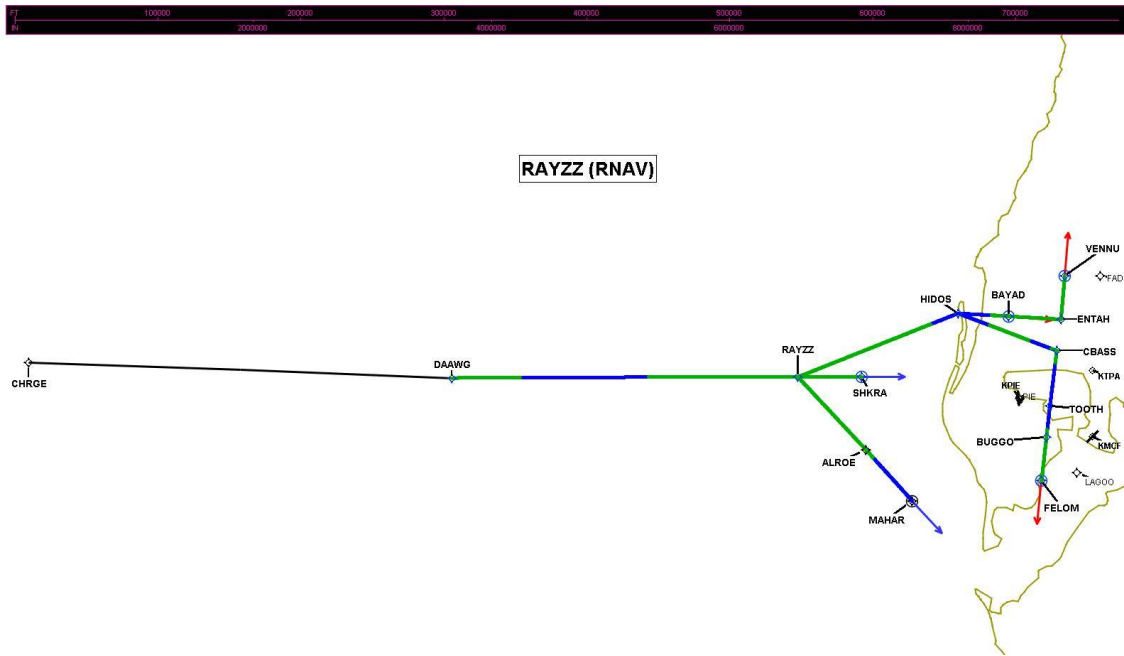
## DME DME Assessment Results for RAYZZ1 path HIDOS\_VENNU

### DME Error



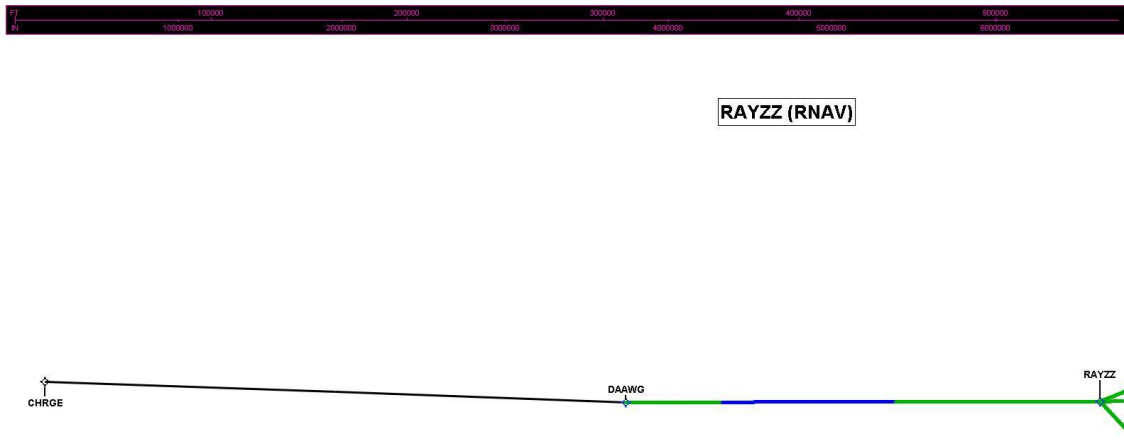
# DME DME Assessment Results for RAYZZ1 path HIDOS\_VENNU

Graphic Depiction 1



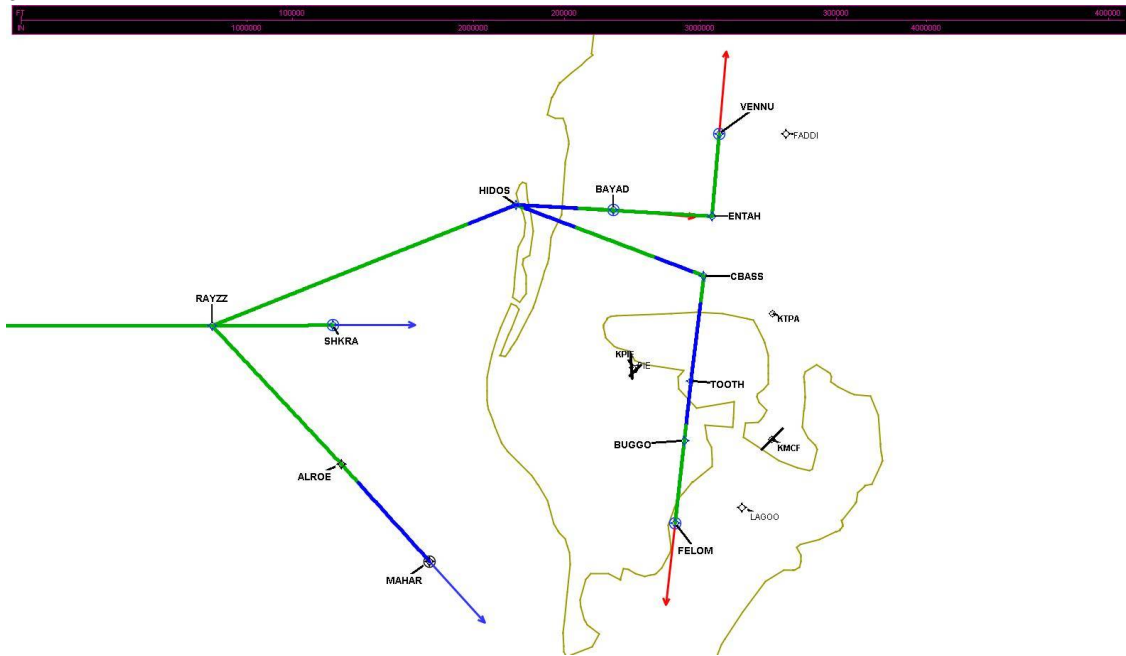
## DME DME Assessment Results for RAYZZ1 path HIDOS\_VENNU

Graphic Depiction 2



# DME DME Assessment Results for RAYZZ1 path HIDOS\_VENNU

Graphic Depiction 3



## DME DME Assessment Results for RAYZZ1 path RAYZZ\_MAHAR

### Results Summary

Flyability:	Completed
DME/DME:	Completed - No Critical DMEs
Name:	Miles CTR Carpenter
Project File:	C:\Users\Miles CTR Carpenter\Desktop\KTPA STARs DME\KTPA RAYZZ STAR DME\KTPA RAYZZ HC.tgs
Output File:	C:\Users\Miles CTR Carpenter\Desktop\KTPA STARs DME\KTPA RAYZZ STAR DME\KTPA [IFPA] RAYZZ1 20201119_1514 EST\RAYZZ_MAHAR\KTPA RAYZZ1 RNAV STAR RAYZZ MAHAR 20201119_1514 EST.pdf
Procedure Name:	RAYZZ1
Software: DmeDmePlugin:	6.2.0
Date/Time:	11/19/2020 15:14 EST
Databases:	DTED 0max

### Failures

No Failures

### Warnings

No Warnings

### Notes For Flight Check

CHRG TO DAAWG SEGMENT GNSS ONLY.

### Flight Plan

Name	Type	Lat/Lon	Altitude (ft)	VNAV Mode	Ground Speed (kts)	Turn Type	Leg Type
RAYZZ	WP	N27° 54' 49.670", W083° 10' 07.190"	10000	VNAV	240	FLY_BY	TF
ALROE	WP	N27° 47' 11.090", W083° 00' 29.000"	8000	VNAV	240	FLY_BY	TF
MAHAR	WP	N27° 41' 47.520", W082° 53' 53.640"	6000	VNAV	240	FLY_OVER	TF

### Flyability

Flight Type:	RNAV_STAR
Selected Airport:	KTPA [IFPA]
Climb Gradient:	None assigned
Speeds:	200 Ground Speed to 11000 FT
	240 Ground Speed to 18000 FT
	260 Ground Speed to 24000 FT
	340 Ground Speed above 24000 FT
Descent During a Turn:	Allowed
VNAV Mode:	Flight Plan

## DME DME Assessment Results for RAYZZ1 path RAYZZ\_MAHAR

DME/DME	
RNP:	RNP 2
Flight Mode:	Manual
Line of Sight (DTED Level 0 Max):	Evaluated
Inertial Drift:	Enabled
Initial Drift:	0.558 NM
INS Drift Rate:	8.0 NM/Hour
Range Mode:	OSV
RNP Edges:	Evaluated
Min DME Range:	3.0 NM
DME Types:	DME, VOR-DME, VORTAC
DME Include Angles:	30 to 150
Critical DMEs:	Not Allowed
DoD Facilities:	Not included
Foreign Facilities:	Included
High DMEs:	Included
Low DMEs:	Included
Terminal DMEs:	Included
Flight Check DMEs:	Not selected
Higher Altitudes:	Not Evaluated
Near Maximum Altitude:	Not Evaluated
Automatic ESVs:	Not enabled
Disabled DMEs:	None

DME/DME (Continued)										
DMEs Used										
#	Name	Lat/Lon	MAGVAR	Range	Type	Source	Critical	Status	Time	Distance
1	LAL	N27° 59' 10.253", W082° 00' 50.009"	1.0 E	130	H	IFPA	NO	Enabled	66.2 %	66.2 %
2	PIE	N27° 54' 27.952", W082° 41' 03.513"	5.0 W	130	H	IFPA	NO	Enabled	66.2 %	66.2 %
3	OCF	N29° 10' 38.918", W082° 13' 34.802"	0.0 E	40	L	IFPA	NO	Enabled	66.2 %	66.2 %

Flight Check DME Selection						
Distance [NM]	Selected DMEs					Alternate
0.0	OCF	PIE	LAL			
12.9						

Inertial Drift Segments			
#	Start Location	End Location	Length [NM]
1	N27° 46' 11.793", W082° 59' 16.469"	N27° 41' 47.520", W082° 53' 53.640"	6.4876

Available DMEs by Waypoints		
Waypoint Before	Waypoint After	DME List
RAYZZ	ALROE	OCF, LAL, PIE
ALROE	MAHAR	OCF, LAL, PIE

# DME DME Assessment Results for RAYZZ1 path RAYZZ\_MAHAR

## User Data Files

# File Name

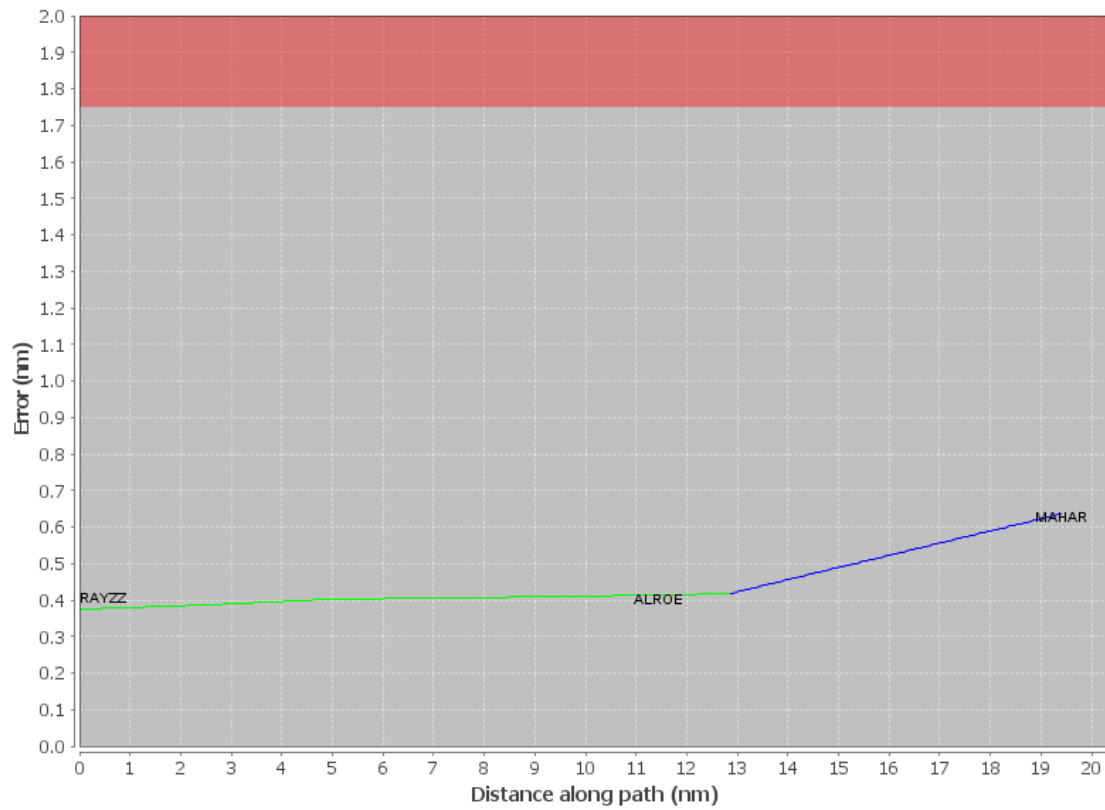
None

## User DMEs

#	Name	Lat/Lon	MAGVAR	Range	Elevation [ft]	Frequency	Replaces	Status
1	LAL FAA 704224-35 LAL [IFPA]	N27° 59' 10.253", W082° 00' 50.009"	1.0 E	130	133.9	116.0	LAL FAA 704224-35	
ESV:		Bearing [True]: 245.0° to 270.0° Bearing [Mag]: 244.0° to 269.0°				Arc Distance: Out to 95.0 NM Altitude: 7000.0 to 18000.0 ft		
2	CTY FAA 704013-34 CTY [IFPA]	N29° 35' 56.403", W083° 02' 55.651"	2.0 W	40	33.8	112.0	CTY FAA 704013-34	
ESV:		Bearing [True]: 188.0° to 197.0° Bearing [Mag]: 190.0° to 199.0°				Arc Distance: Out to 109.0 NM Altitude: 10000.0 to 20000.0 ft		
3	OCF FAA 714002-10 OCF [IFPA]	N29° 10' 38.918", W082° 13' 34.802"	0.0 E	40	78.3	113.7	OCF FAA 714002-10	
ESV:		Bearing [True]: 210.0° to 235.0° Bearing [Mag]: 210.0° to 235.0°				Arc Distance: Out to 138.0 NM Altitude: 14000.0 to 18000.0 ft		
4	OCF FAA 714002-037 OCF [IFPA]	N29° 10' 38.918", W082° 13' 34.802"	0.0 E	40	78.3	113.7	OCF FAA 714002-037	
ESV:		Bearing [True]: 190.0° to 220.0° Bearing [Mag]: 190.0° to 220.0°				Arc Distance: Out to 77.0 NM Altitude: 5200.0 to 6100.0 ft		
5	OCF FAA 714002-17 OCF [IFPA]	N29° 10' 38.918", W082° 13' 34.802"	0.0 E	40	78.3	113.7	OCF FAA 714002-17	
ESV:		Bearing [True]: 205.0° to 227.0° Bearing [Mag]: 205.0° to 227.0°				Arc Distance: Out to 105.0 NM Altitude: 6000.0 to 18000.0 ft		
6	LAL FAA 704224-082 LAL [IFPA]	N27° 59' 10.253", W082° 00' 50.009"	1.0 E	130	133.9	116.0	LAL FAA 704224-082	
ESV:		Bearing [True]: 251.0° to 306.0° Bearing [Mag]: 250.0° to 305.0°				Arc Distance: Out to 51.0 NM Altitude: 2900.0 to 6100.0 ft		

# DME DME Assessment Results for RAYZZ1 path RAYZZ\_MAHAR

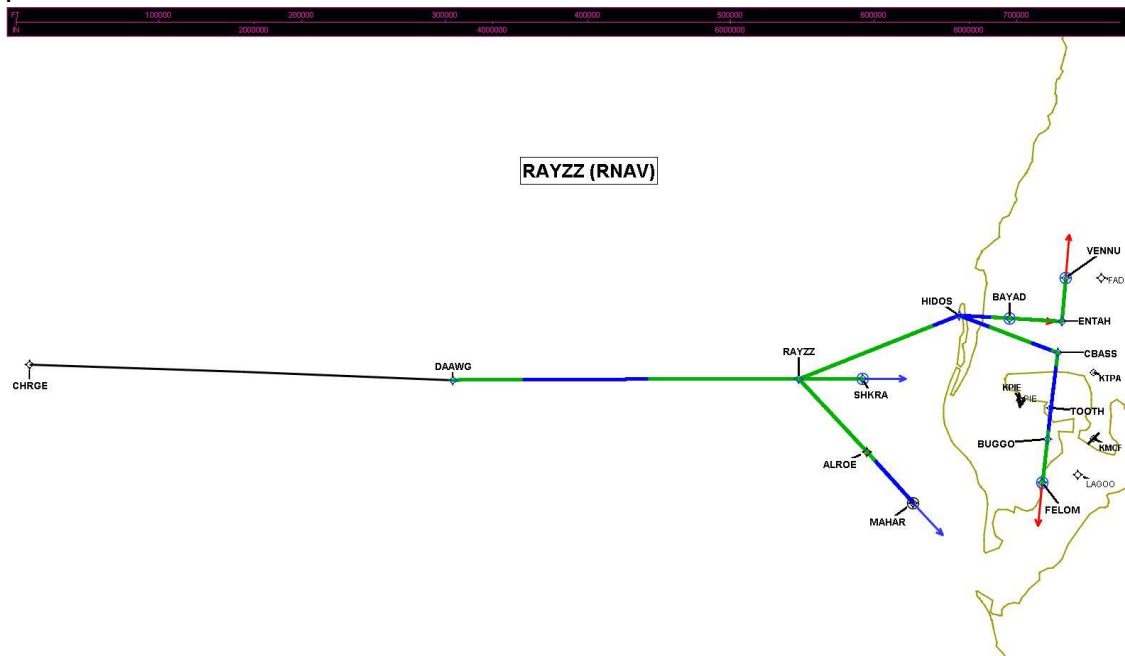
## DME Error





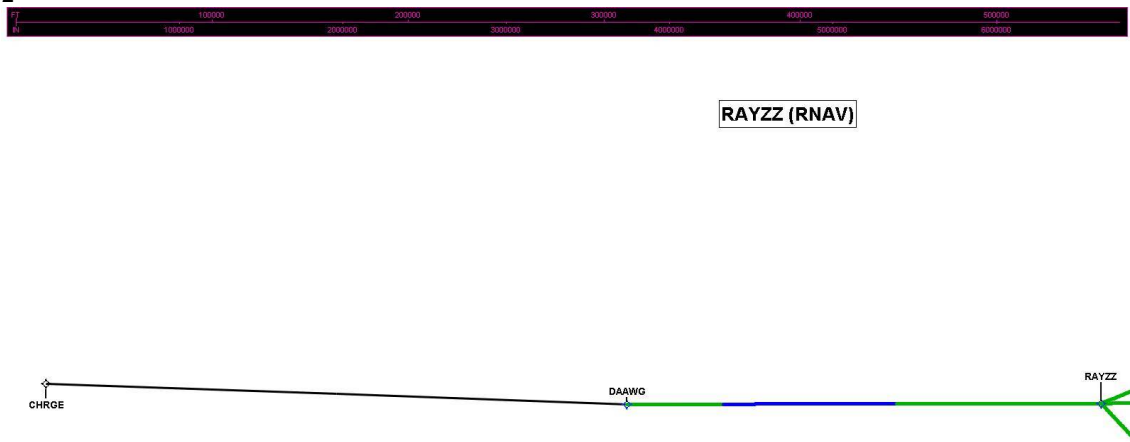
# DME DME Assessment Results for RAYZZ1 path RAYZZ\_MAHAR

Graphic Depiction 1



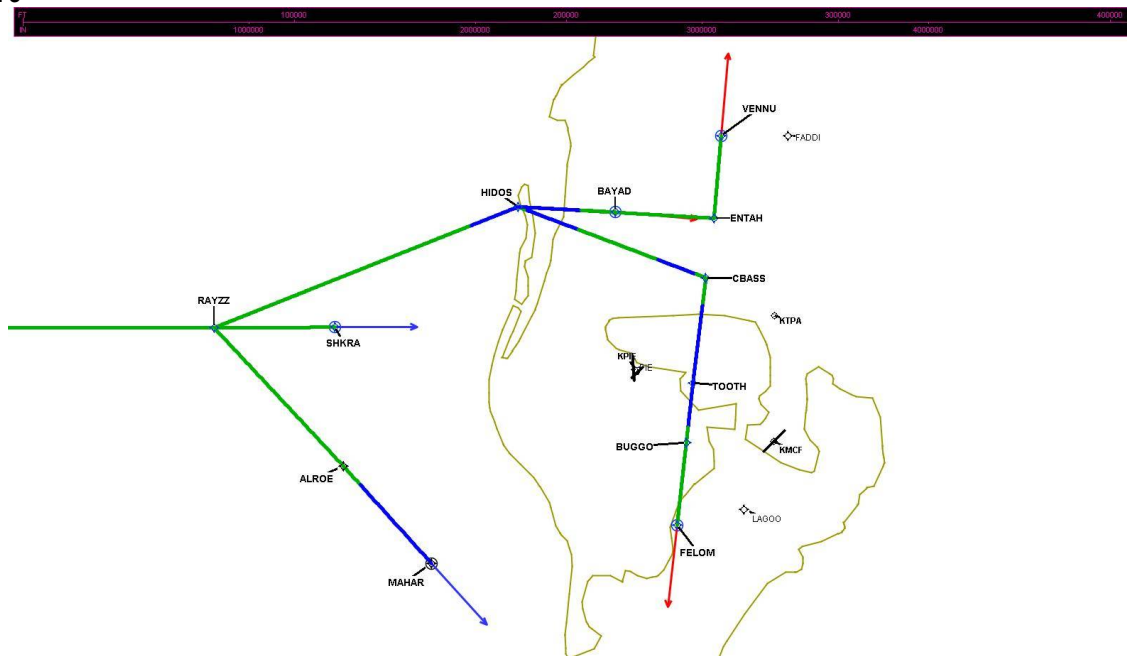
# DME DME Assessment Results for RAYZZ1 path RAYZZ\_MAHAR

Graphic Depiction 2



# DME DME Assessment Results for RAYZZ1 path RAYZZ\_MAHAR

Graphic Depiction 3



## DME DME Assessment Results for RAYZZ1 path RAYZZ\_SHKRA

### Results Summary

Flyability:	Completed
DME/DME:	Completed - No Critical DMEs
Name:	Miles CTR Carpenter
Project File:	C:\Users\Miles CTR Carpenter\Desktop\KTPA STARs DME\KTPA RAYZZ STAR DME\KTPA RAYZZ HC.tgs
Output File:	C:\Users\Miles CTR Carpenter\Desktop\KTPA STARs DME\KTPA RAYZZ STAR DME\KTPA [IFPA] RAYZZ1 20201119_1514 EST\RAYZZ_SHKRA\KTPA RAYZZ1 RNAV STAR RAYZZ SHKRA 20201119_1514 EST.pdf
Procedure Name:	RAYZZ1
Software: DmeDmePlugin:	6.2.0
Date/Time:	11/19/2020 15:14 EST
Databases:	DTED 0max

### Failures

No Failures

### Warnings

No Warnings

### Notes For Flight Check

CHRG TO DAAWG SEGMENT GNSS ONLY.

### Flight Plan

Name	Type	Lat/Lon	Altitude (ft)	VNAV Mode	Ground Speed (kts)	Turn Type	Leg Type
RAYZZ	WP	N27° 54' 49.670", W083° 10' 07.190"	10000	VNAV	240	FLY_BY	TF
SHKRA	WP	N27° 55' 29.670", W083° 01' 53.590"	8000	VNAV	240	FLY_OVER	TF

### Flyability

Flight Type:	RNAV_STAR
Selected Airport:	KTPA [IFPA]
Climb Gradient:	None assigned
Speeds:	200 Ground Speed to 11000 FT
	240 Ground Speed to 18000 FT
	260 Ground Speed to 24000 FT
	340 Ground Speed above 24000 FT
Descent During a Turn:	Allowed
VNAV Mode:	Flight Plan

## DME DME Assessment Results for RAYZZ1 path RAYZZ\_SHKRA

DME/DME	
RNP:	RNP 2
Flight Mode:	Manual
Line of Sight (DTED Level 0 Max):	Evaluated
Inertial Drift:	Enabled
Initial Drift:	0.558 NM
INS Drift Rate:	8.0 NM/Hour
Range Mode:	OSV
RNP Edges:	Evaluated
Min DME Range:	3.0 NM
DME Types:	DME, VOR-DME, VORTAC
DME Include Angles:	30 to 150
Critical DMEs:	Not Allowed
DoD Facilities:	Not included
Foreign Facilities:	Included
High DMEs:	Included
Low DMEs:	Included
Terminal DMEs:	Included
Flight Check DMEs:	Not selected
Higher Altitudes:	Not Evaluated
Near Maximum Altitude:	Not Evaluated
Automatic ESVs:	Not enabled
Disabled DMEs:	None

DME/DME (Continued)										
DMEs Used										
#	Name	Lat/Lon	MAGVAR	Range	Type	Source	Critical	Status	Time	Distance
1	LAL	N27° 59' 10.253", W082° 00' 50.009"	1.0 E	130	H	IFPA	NO	Enabled	10.9 %	10.9 %
2	PIE	N27° 54' 27.952", W082° 41' 03.513"	5.0 W	130	H	IFPA	NO	Enabled	100 %	100 %
3	OCF	N29° 10' 38.918", W082° 13' 34.802"	0.0 E	40	L	IFPA	NO	Enabled	100 %	100 %

Flight Check DME Selection						
Distance [NM]	Selected DMEs					Alternate
0.0	OCF	PIE	LAL			
0.9	OCF	PIE				

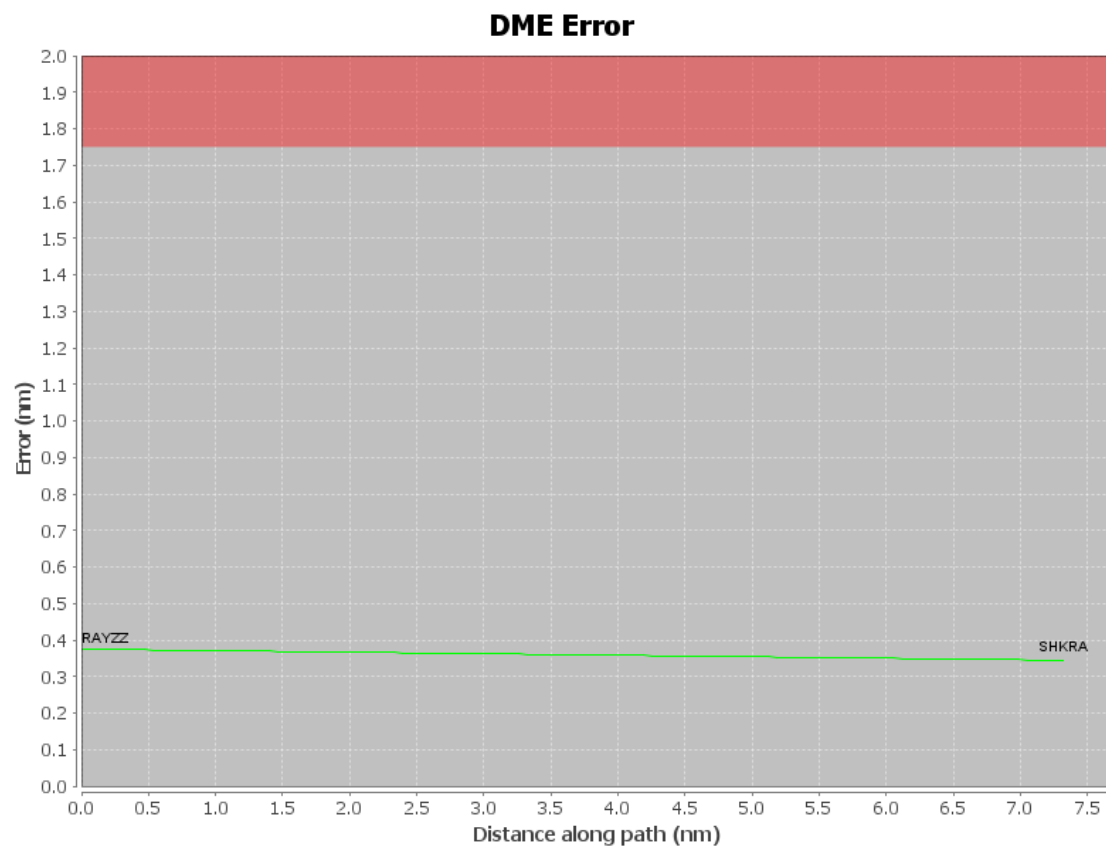
Inertial Drift Segments			
#	Start Location	End Location	Length [NM]

Available DMEs by Waypoints		
Waypoint Before	Waypoint After	DME List
RAYZZ	SHKRA	OCF, LAL, PIE

# DME DME Assessment Results for RAYZZ1 path RAYZZ\_SHKRA

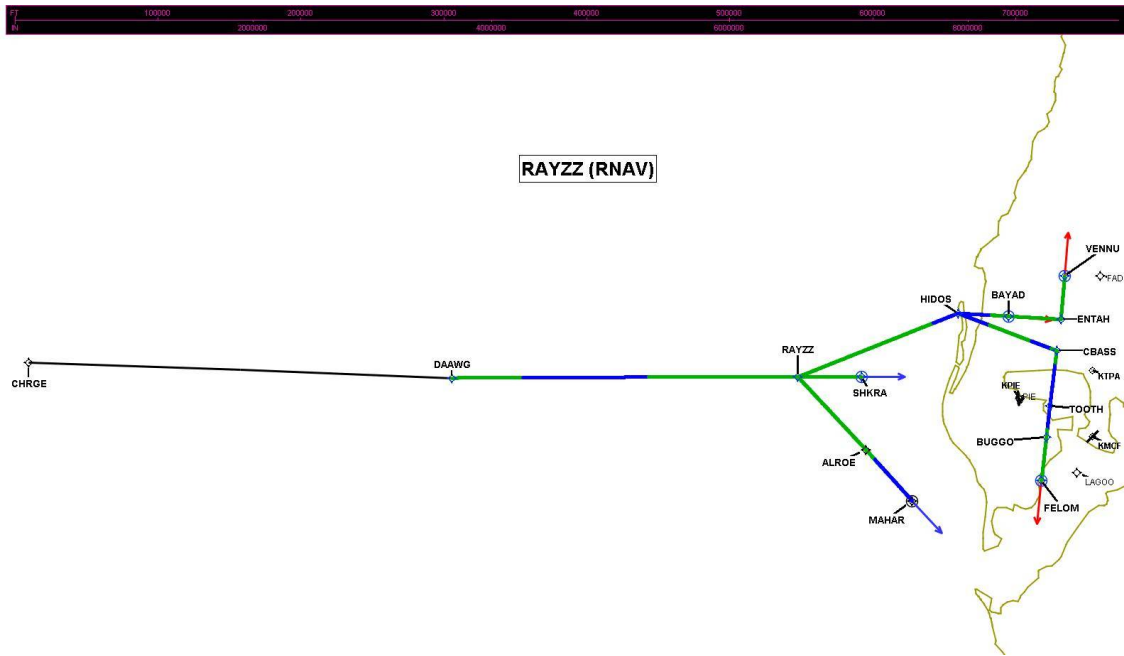
User Data Files								
#	File Name							
None								
User DMEs								
#	Name	Lat/Lon	MAGVAR	Range	Elevation [ft]	Frequency	Replaces	Status
1	LAL FAA 704224-35 LAL [IFPA]	N27° 59' 10.253", W082° 00' 50.009"	1.0 E	130	133.9	116.0	LAL FAA 704224-35	
ESV:		Bearing [True]: 245.0° to 270.0° Bearing [Mag]: 244.0° to 269.0°				Arc Distance: Out to 95.0 NM Altitude: 7000.0 to 18000.0 ft		
2	CTY FAA 704013-34 CTY [IFPA]	N29° 35' 56.403", W083° 02' 55.651"	2.0 W	40	33.8	112.0	CTY FAA 704013-34	
ESV:		Bearing [True]: 188.0° to 197.0° Bearing [Mag]: 190.0° to 199.0°				Arc Distance: Out to 109.0 NM Altitude: 10000.0 to 20000.0 ft		
3	OCF FAA 714002-10 OCF [IFPA]	N29° 10' 38.918", W082° 13' 34.802"	0.0 E	40	78.3	113.7	OCF FAA 714002-10	
ESV:		Bearing [True]: 210.0° to 235.0° Bearing [Mag]: 210.0° to 235.0°				Arc Distance: Out to 138.0 NM Altitude: 14000.0 to 18000.0 ft		
4	OCF FAA 714002-037 OCF [IFPA]	N29° 10' 38.918", W082° 13' 34.802"	0.0 E	40	78.3	113.7	OCF FAA 714002-037	
ESV:		Bearing [True]: 190.0° to 220.0° Bearing [Mag]: 190.0° to 220.0°				Arc Distance: Out to 77.0 NM Altitude: 5200.0 to 6100.0 ft		
5	OCF FAA 714002-17 OCF [IFPA]	N29° 10' 38.918", W082° 13' 34.802"	0.0 E	40	78.3	113.7	OCF FAA 714002-17	
ESV:		Bearing [True]: 205.0° to 227.0° Bearing [Mag]: 205.0° to 227.0°				Arc Distance: Out to 105.0 NM Altitude: 6000.0 to 18000.0 ft		
6	LAL FAA 704224-082 LAL [IFPA]	N27° 59' 10.253", W082° 00' 50.009"	1.0 E	130	133.9	116.0	LAL FAA 704224-082	
ESV:		Bearing [True]: 251.0° to 306.0° Bearing [Mag]: 250.0° to 305.0°				Arc Distance: Out to 51.0 NM Altitude: 2900.0 to 6100.0 ft		

## DME DME Assessment Results for RAYZZ1 path RAYZZ\_SHKRA



# DME DME Assessment Results for RAYZZ1 path RAYZZ\_SHKRA

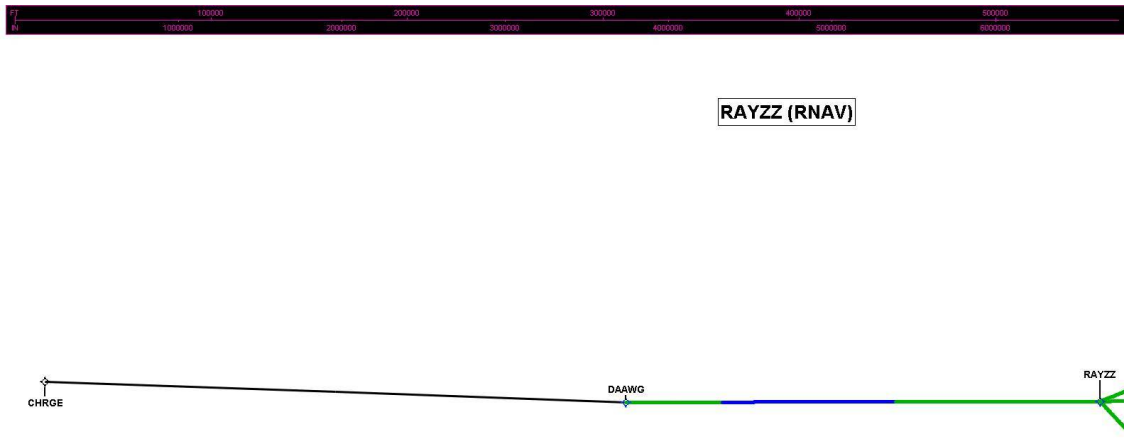
Graphic Depiction 1





## DME DME Assessment Results for RAYZZ1 path RAYZZ\_SHKRA

Graphic Depiction 2



# DME DME Assessment Results for RAYZZ1 path RAYZZ\_SHKRA

Graphic Depiction 3

