

Flight Procedures Cover Page	Task Action: Amendment	Task Type: IAP	Estimated Chart Date: 04/23/2020	APWS Task ID: 6E56E9B9178549B38CC6EB0054968D98	APWS Request ID: DBD716DCFC48431F8F48B0F09E0AD5C5
Procedure: APPROACH RNAV (GPS) RWY 22 AMDT 2C		Enroute: NO	Specialist: Miller, Ralph		Agreement Number:
Airport ID: KHOU	Airport Name: WILLIAM P HOBBY		Airport City: HOUSTON		State: TX
Facility ID:	Facility Type:	Flight Inspection Remark Type:			
<div>Procedure Comments:</div> <div>P-NOTAM    0/5890</div> <div>CIRCLING ICON</div> <div>PROCESSED IAW AIRCRAFT OPERATIONS GROUP (AJW-33) MEMO, OCTOBER 3, 2018, SUBJECT: FLIGHT INSPECTION REVIEW NOT REQUIRED</div> <div>ACTIVE DATA USED.</div> <div>CONTACT DAVID DANNER, AJV-A421, (405)-954-5077</div> <div>QUALITY 6 CHECKED SN 2/10/20</div> <div>QUALITY 41 CHECKED DNAC</div>					

HOUSTON, TEXAS

AL-198 (FAA)

19171

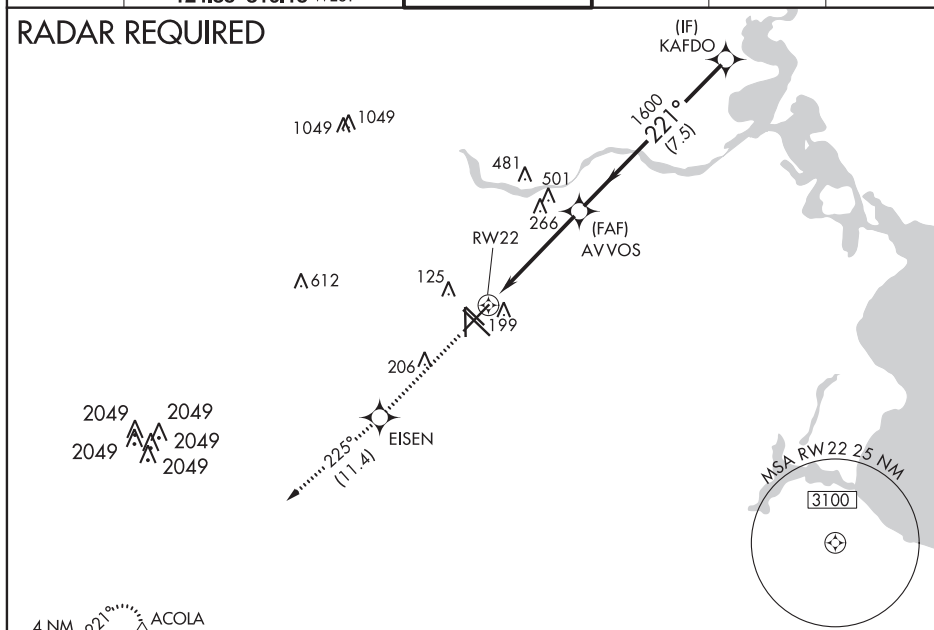
WAAS CH <b>65610</b> <b>W22A</b>	APP CRS <b>221°</b>	Rwy Idg <b>7602</b> TDZE <b>41</b> Apt Elev <b>46</b>
--	------------------------	---

**OLD****RNAV (GPS) RWY 22**

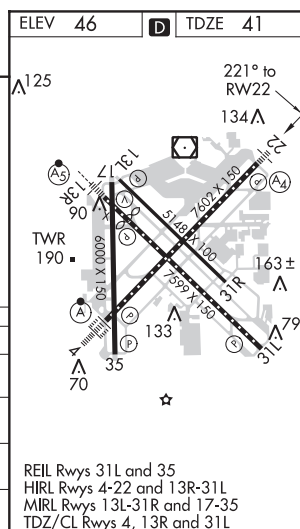
WILLIAM P HOBBY (HOU)

<p>▼ Inop table does not apply to LPV, LNAV/VNAV all Cats, and LNAV Cat C. For uncompensated Baro-VNAV systems, LNAV/VNAV NA below -15°C (5°F) or above 48°C (118°F). DME/DME RNP-0.3 NA.</p> <p>▲</p>	<p>MALS</p> <p>Ⓜ</p>	<p>MISSED APPROACH: Climb to 3000 direct EISEN and on track 225° to ACOLA and hold.</p>
--	----------------------	---

D-ATIS <b>124.6</b>	HOUSTON APP CON <b>120.05 379.1</b> EAST <b>124.35 316.15</b> WEST	HOBBY TOWER <b>118.7 256.9</b>	GND CON <b>121.9</b>	CLNC DEL <b>125.45</b>	CPDLC
------------------------	--	-----------------------------------	-------------------------	---------------------------	-------

**RADAR REQUIRED**

3000 ↑		EISEN ✧		225° tr		ACOLA △		KAFDO 2000	
*LNAV only.		*1.5 NM to RW22							
RW22		1.5 NM		3.2 NM		7.5 NM		GP 3.0 TCH 52	
		A		B		C		D	
CATEGORY		A		B		C		D	
LPV DA		360-1		319 (400-1)					
LNAV/VNAV DA		480-1½		439 (500-1½)					
LNAV MDA		580-¾ 539 (600-¾)		580-1½ 539 (600-1½)		580-1¾ 539 (600-1¾)		580-2 539 (600-2)	
CIRCLING		580-1 534 (600-1)		580-1½ 534 (600-1½)		600-2 554 (600-2)		860-3 814 (900-3)	



HOUSTON, TEXAS

Amdt 2B 29MAY14

29°39'N-95°17'W

WILLIAM P HOBBY (HOU)

**RNAV (GPS) RWY 22**



NM 1 2 3 4 5 6 7 8 9 10  
FT 8000 16000 24000 32000 40000 48000 56000 64000

fporbr | houl22 (PROD) | 19 Nov 2018 11:23:10 | 1" = 8333.3 feet (MAP)

Airport ID	KHOU	#	Segment	Obstruction	Elev
Apt Name	William P Hobby	<del>3</del>	<del>Final</del>	<del>AAO</del>	<del>245</del>
City	Houston	6	Circ Cat A	Tower	199
State	TX	7	Circ Cat B	Tower	206
Scale	1:100k	8	Circ Cat C	Antenna	232
Proc ID	New Circ Area	9	Circ Cat D	Stack	374
Amdt #		10	Circ Cat E	Stack	461
		<del>#</del>	<del>Final 7.1</del>	<del>Stack</del>	<del>280</del>

