



Flight Procedures Cover Page	Task Action: P-NOTAM	Task Type: IAP	Estimated Chart Date: 11/04/2021	APWS Task ID: 6D764653734149FB8FE9A1075E6E09BF	APWS Project ID: 12577A4E206549B1882FB0629DC74C3D
Procedure: VOR RWY 18 AMDT 8B		Enroute: NO	Specialist: Copeland, Guy		Agreement Number:
Airport ID: KEUF			Airport City: EUFAULA		State: AL
Facility ID:	Facility Type:	Flight Inspection Remark Type:			
<div> <div> Procedure Comments: P-NOTAM This Cancels FDC 9/9390 Order 8260.3, Chapter 2, New Circling Criteria Applied Contact Dave Teffeteller at 202-267-5177 </div> <div>   </div> </div>					

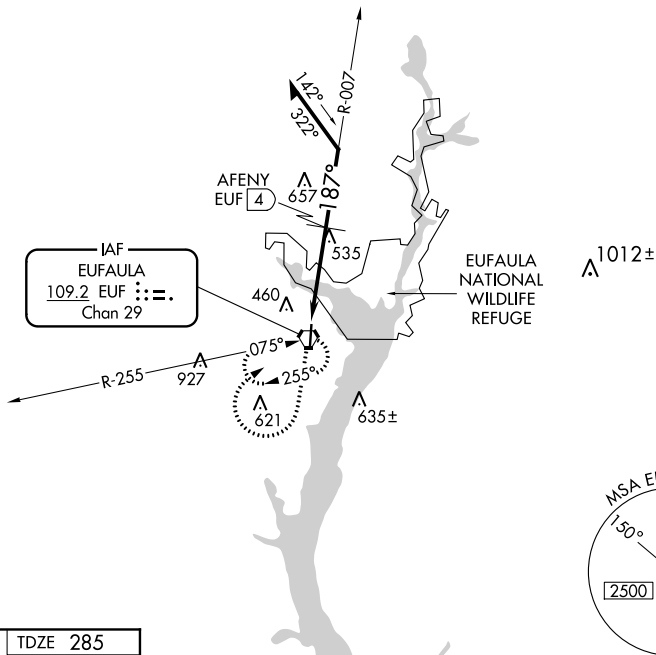
VORTAC EUF <u>109.2</u> Chan 29	APP CRS 187°	Rwy Idg 5000 TDZE 285 Apt Elev 285
---------------------------------------	------------------------	---

VOR RWY 18
WEEDON FIELD (EUF)

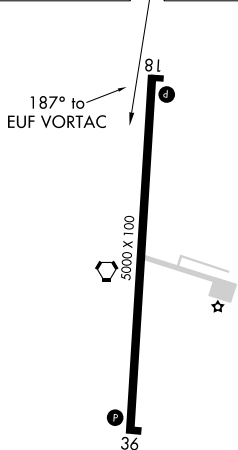
T Use Clayton altimeter setting; when not received, use Columbus, GA altimeter setting and increase all MDAs 40 feet and AFENY Fix Minimums Circling Cat C and D visibility $\frac{1}{4}$ mile.

MISSED APPROACH: Climb to 1500 then climbing right turn to 2000 direct EUF VORTAC and hold.

ASOS 128.325	11A AWOS-3 118.775	ATLANTA APP CON ★ 125.5 323.1	CLNC DEL 134.25 339.8	UNICOM 122.8 (CTAF) 0
------------------------	------------------------------	---	---------------------------------	--



ELEV 285		TDZE 285
----------	--	----------



MIRL Rwy 18-36 **L**
EUFULA, ALABAMA
Amdt 8A 12SEP19

CATEGORY	A	B	C	D
S-18	1040-1 755 (800-1)	1040-1¼ 755 (800-1¼)	1040-2¼ 755 (800-2¼)	1040-2½ 755 (800-2½)
CIRCLING	1040-1 755 (800-1)	1040-1¼ 755 (800-1¼)	1040-2¼ 755 (800-2¼)	1040-2½ 755 (800-2½)

AFENY FIX MINIMUMS (DME REQUIRED)			
S-18	900-1 615 (700-1)	900-1¾ 615 (700-1¾)	900-2 615 (700-2)
CIRCLING	920-1 635 (700-1)	920-1¾ 635 (700-1¾)	1000-2½ 715 (800-2½)

31°57'N-85°08'W

WEEDON FIELD (EUF)
VOR RWY 18

SE-4, 22 APR 2021 to 20 MAY 2021

