

Flight Procedures Cover Page	Task Action: P-NOTAM	Task Type: IAP	Estimated Chart Date: 04/22/2021	APWS Task ID: 6D58A634336A4667AA24A38BFBA81927	APWS Project ID: 5C945E6416824AD1BD9DE2D00B6C269A
Procedure: NDB RWY 33 AMDT 2A		Enroute: NO	Specialist: Martinez, Rafael		Agreement Number:
Airport ID: KUVA			Airport City: UVALDE		State: TX
Facility ID:	Facility Type:	Flight Inspection Remark Type:			
<p>Procedure Comments:</p> <p>P-NOTAM.</p> <p>THIS CANCELS FDC 0/6519.</p> <p>ORDER 8260.3, CHAPTER 2, NEW CIRCLING CRITERIA APPLIED.</p> <p>CONTACT: LONNIE EVERHART 405-954-4576/DAVID TEFFETELLER 202-267-5177.</p>					

QUALITY
45
CHECKED

QUALITY
41
CHECKED

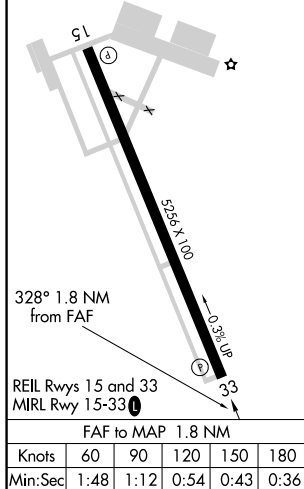
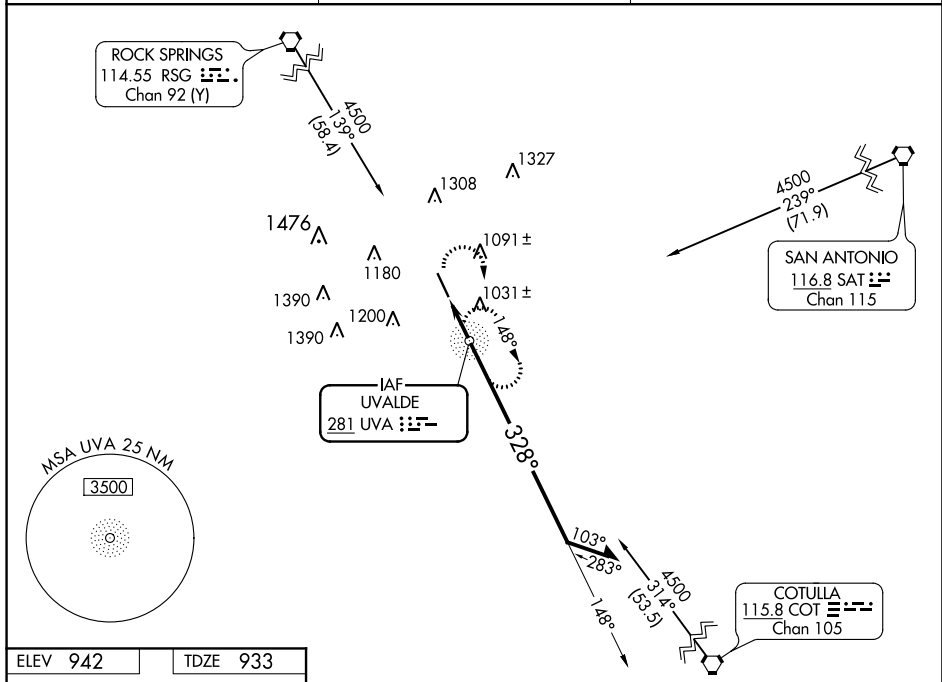
NDB UVA 281	APP CRS 328°	Rwy ldg 5256 TDZE 933 Apt Elev 942
-----------------------	------------------------	---

NDB RWY 33

GARNER FIELD (UVA)

<p>Obtain local altimeter setting on CTAF; when not received, use South Texas Rgnl at Hondo altimeter setting.</p>	<p>MISSED APPROACH: Climbing right turn to 2900 direct UVA NDB and hold.</p>
--	--

AWOS-3 124.175	HOUSTON CENTER 134.95 269.4	UNICOM 122.8 (CTAF) 0
--------------------------	---------------------------------------	---------------------------------



2900

UVA

CATEGORY	A	B	C	D
S-33	1340-1	407 (400-1)	1340-1¼	407 (400-1¼)
CIRCLING	1340-1 398 (400-1)	1460-1 518 (600-1)	1460-1½ 518 (600-½)	1500-2 558 (600-2)

SOUTH TEXAS REGIONAL AT HONDO ALTIMETER SETTING MINIMUMS

S-33	1440-1	507 (500-1)	1440-1½	507 (500-1½)
CIRCLING	1440-1 498 (500-1)	1560-1 618 (700-1)	1560-1¾ 618 (700-1¾)	1600-2 658 (700-2)

