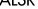




Flight Procedures Cover Page	Task Action: Abbreviated Amendment	Task Type: IAP	Estimated Chart Date: 02/23/2023	APWS Task ID: 6CB4084910074CEBA8234BB536E7BA71	APWS Project ID: 61FBBAA376BA4BB69611F3C7264A4662
Procedure: GLS RWY 9 AMDT 1C		Enroute: NO	Specialist: Jackson, Nicholas		Agreement Number:
Airport ID: KIAH			Airport City: HOUSTON		State: TX
Facility ID:	Facility Type:	Flight Inspection Remark Type:			
<div>Procedure Comments: PROCEDURE UPDATED TO COINCIDE WITH OTHER FULLY AMENDED GLS PROCEDURES RPI AND CRC REMAINDER VALUES.</div> <div>CONTACT: ERIC SUSKI, 405.954.7331</div> <div><div>Digitally signed by ERIC N SUSKI Dec 07, 2022</div><div><div>QUALITY 25 CHECKED</div><div>QUALITY 38 CHECKED</div></div></div>					

GBAS CH 21895 RPI G09A	APP CRS 087°	Rwy Idg 10000 TDZE 90 Apt Elev 96
--	------------------------	--

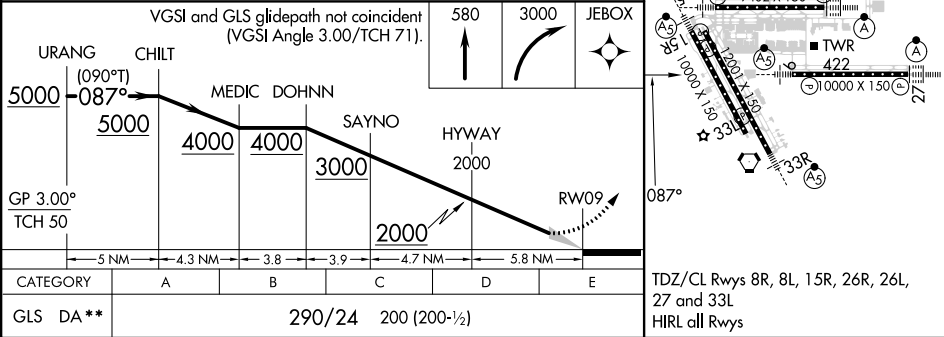
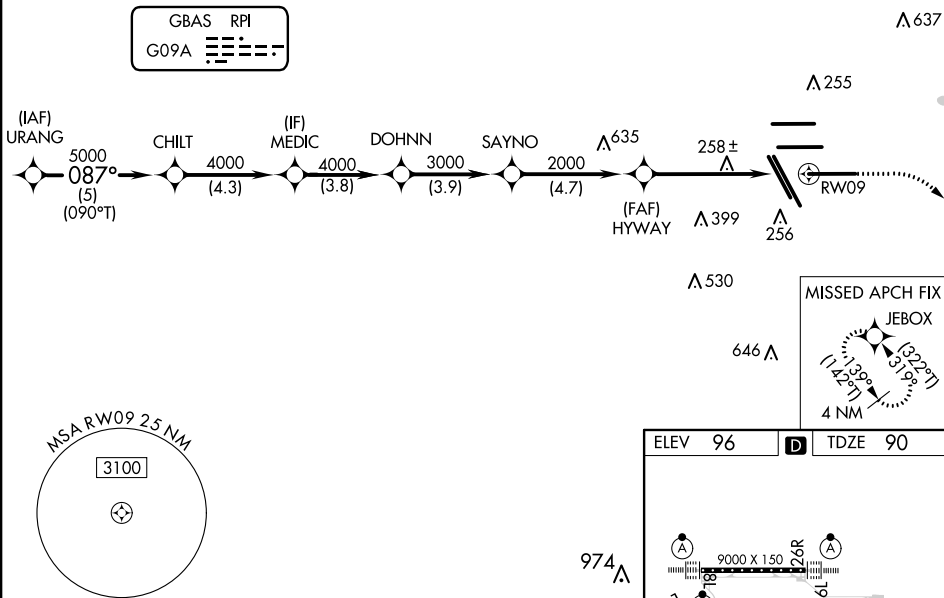
GLS RWY 9

GEORGE BUSH INTCNL/HOUSTON (IAH)

RNAV APCH - GPS.		MALSR 	MISSED APPROACH: Climb to 580 then climbing right turn to 3000 direct JEBOX and hold.
 Simultaneous approach authorized.  NA Use of FD or AP required during simultaneous operations. Autopilot coupled approach NA below 290. ** RVR 1800 authorized with use of FD or AP or HUD to DA			

D-ATIS 124.05	HOUSTON APP CON 120.05 379.1 EAST 124.35 316.15 WEST	HOUSTON TOWER 135.15 290.2	GND CON 118.575	CLNC DEL 128.1	CPDLC
-------------------------	--	--------------------------------------	---------------------------	--------------------------	-------

PROTOTYPE-NOT FOR NAVIGATION




GLS RWY 9

LAAS CH 21895 RPI GUYO	APP CRS 087°	Rwy Idg 10000 TDZE 91 Apt Elev 96
--	------------------------	--

GLS RWY 9

GEORGE BUSH INTCNL/HOUSTON (IAH)

⚠ NA For inop MALSR, increase GLS all Cats visibility to RVR 4000. Simultaneous approach authorized with Rwy 8L/R. DME/DME RNP-0.3 NA. Use of FD or AP providing RNAV track guidance required during simultaneous operations. GPS required. Autoland approach NA. **RVR 1800 authorized with use of FD or AP or HUD to DA.	MALSR 	MISSED APPROACH: Climb to 580 then climbing right turn to 3000 direct JEBOX and hold.
---	--	---

D-ATIS 124.05	HOUSTON APP CON 120.05 379.1 EAST 124.35 316.15 WEST	HOUSTON TOWER 135.15 290.2	GND CON 118.575	CLNC DEL 128.1	CPDLC
-------------------------	--	--------------------------------------	---------------------------	--------------------------	-------

RADAR REQUIRED

