


Flight Procedure Tracking Form		Action: AMENDMENT	Task Type: IAP	Date Open: 11/04/2019	Task #: 2019110435130101001	Request #: 20191104351301
Procedure: APPROACH ILS OR LOC RWY 7 R AMDT 2C			Airport ID: KPHX	Airport: PHOENIX SKY HARBOR INTL		Reimbursable #: NO
City: PHOENIX	ST: AZ	GPS #:	Estimated Chart Date: 04/23/2020			FICO #:
Fac ID: N/A		Fac. Type:			Specialist: ANDRE TUCKER	
Procedure Review						
	Rec'd	Rel'd	Full Name	Comments		
Lead:	11/07/2019					
QA:						
Liaison:						
Procedure Comments:			ENROUTE-NON	Remark Type: INFORMATION		
P-NOTAM NEW CIRCLING AREAS PROCESSED IAW AIRCRAFT OPERATIONS GROUP (AJW-33) MEMO, OCTOBER 3, 2018, SUBJECT: FLIGHT INSPECTION REVIEW NOT REQUIRED. DAVE DANNER, 405-954-5077						



19003

OLD

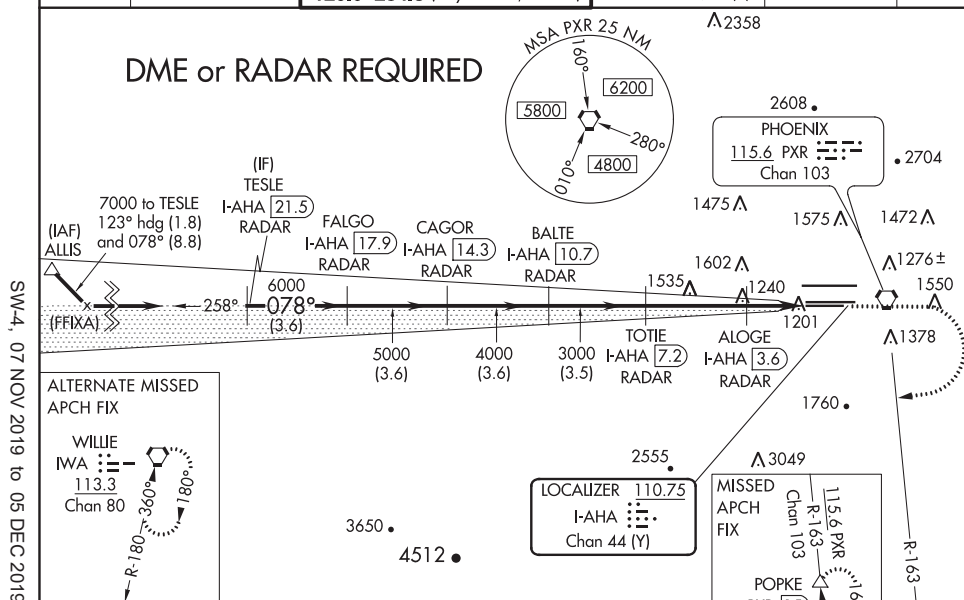
ILS or LOC RWY 7R
PHOENIX SKY HARBOR INTL (PHX)



MISSED APPROACH: Climb to 3300 then climbing right turn to 5000 on heading 250° and PXR VORTAC R-163 to POPKE/PXR 15 DME and hold.

D-ATIS 127.575	PHOENIX APP CON 128.65 353.9	PHOENIX TOWER 118.7 278.8 (Rwy 8-26) 120.9 254.3 (Rwy 7L-25R, 7R-25L)	GND CON 119.75 269.2 (N) 132.55 269.2 (S)	CLNC DEL 118.1 269.2	CPDLC
--------------------------	--	---	---	--------------------------------	-------

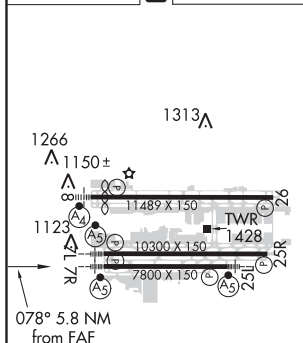
DME or RADAR REQUIRED



SW-4, 07 NOV 2019 to 05 DEC 2019

SW-4 07 NOV 2019 to 05 DEC 2019

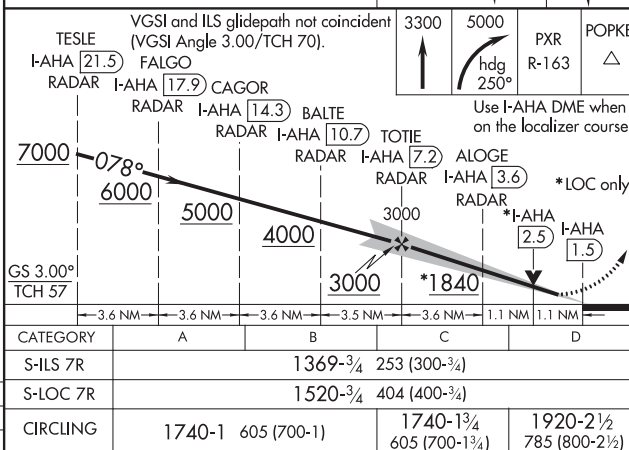
ELEV 1135	D	TDZE 1116
-----------	----------	-----------



HIRL Rwy 8-26, 7L-25R and 7R-25L
REIL Rwy 26

FAF to MAP 5.8 NM					
Knots	60	90	120	150	180
Min:Sec	5:48	3:52	2:54	2:19	1:56

PHOENIX, ARIZONA
Amdt 2B 18SEP14



PHOENIX SKY HARBOR INTL (PHX)
ILS or LOC RWY 7R

33°26'N-112°01'W

