
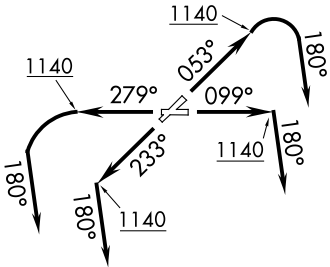


<b>Flight Procedure Tracking Form</b>		<b>Action:</b> AMENDMENT	<b>Task Type:</b> SID	<b>Date Open:</b> 09/27/2019	<b>Task #:</b> 2019092730490101002	<b>Request #:</b> 20190927304901
<b>Procedure:</b> SID CAVVS (RNAV) FOUR WILLOUGHBY OH KLNN			<b>Airport ID:</b> KLNN	<b>Airport:</b> LAKE COUNTY EXECUTIVE		<b>Reimbursable #:</b> NO
<b>City:</b> WILLOUGHBY	<b>ST:</b> OH	<b>GPS #:</b>	<b>Estimated Chart Date:</b> 03/26/2020		<b>FICO #:</b>	
<b>Fac ID:</b> N/A		<b>Fac. Type:</b>		<b>Specialist:</b> RALPH MILLER		
<b>Procedure Review</b>						
	<b>Rec'd</b>	<b>Rel'd</b>	<b>Full Name</b>	<b>Comments</b>		
<b>Lead:</b>	10/02/2019					
<b>QA:</b>						
<b>Liaison:</b>						
<b>Procedure Comments:</b>			ENROUTE	<b>Remark Type:</b> INFORMATION		
ABBREVIATED AMENDMENT  AIRPORT NAME CHANGE.  PROCESSED IAW AIRCRAFT OPERATIONS GROUP (AJW-33) MEMO, OCTOBER 3, 2018, SUBJECT: FLIGHT INSPECTION REVIEW NOT REQUIRED  PENDING DATA USED.  CONTACT DAVID DANNER, AJV-A421, (405)-954-5077						

QUALITY  
 15  
 CHECKED

AWOS-3PT 119.225  
CTAF 122.725  
CLEVELAND DEP CON  
125.35 346.325

TOP ALTITUDE:  
ASSIGNED BY ATC



NOTE: RADAR required.  
NOTE: RNAV 1.  
NOTE: DME/DME/IRU or GPS required.

TAKEOFF MINIMUMS:  
Rwys 5, 10, 23, 28: Standard with a minimum climb  
of 500' per NM to 1140.



DEPARTURE ROUTE DESCRIPTION

TAKEOFF RUNWAY 5: Climb on heading 053° to 1140, then right turn heading 180° or as assigned by ATC for RADAR vectors to cross LBRON at or above 10000, thence....  
TAKEOFF RUNWAY 10: Climb on heading 099° to 1140, then on heading 180° or as assigned by ATC for RADAR vectors to cross LBRON at or above 10000, thence....  
TAKEOFF RUNWAY 23: Climb on heading 233° to 1140, then on heading 180° or as assigned by ATC for RADAR vectors to cross LBRON at or above 10000, thence....  
TAKEOFF RUNWAY 28: Climb on heading 279° to 1140, then left turn heading 180° or as assigned by ATC for RADAR vectors to cross LBRON at or above 10000, thence....

....on track 213° to CAVVS, then on (transition).  
Maintain altitude assigned by ATC, expect  
filed altitude ten minutes after departure.

APPLETON TRANSITION (CAVVS3.APE)

NOTE: Chart not to scale.

