

Flight Procedures Cover Page	Task Action: FLIGHT CHECK	Task Type: IAP	Estimated Chart Date: 12/26/2024	APWS Task ID: 6AACD28B359748DEA49BB8D474A01E6C	APWS Project ID: 702152FF7BC94BEDABC7FD4F0603687F
Procedure: RNAV (GPS) RWY 1 AMDT 2		Enroute: NO	Specialist: Palmer, Leo		Agreement Number:
Airport ID: KACT			Airport City: WACO		State: TX
Facility ID:	Facility Type:	Flight Inspection Remark Type: New FC Slot			
<div>Procedure Comments: ADDED NEW PROCEDURE SEGMENT PER FPT. ACTIVE AIRPORT DATA USED. CONTACT JOHN BORDY (405)954-0980</div> <div>QUALITY 26 CHECKED</div> <div>QUALITY 41 CHECKED</div>					

WACO, TEXAS

AL-439 (FAA)

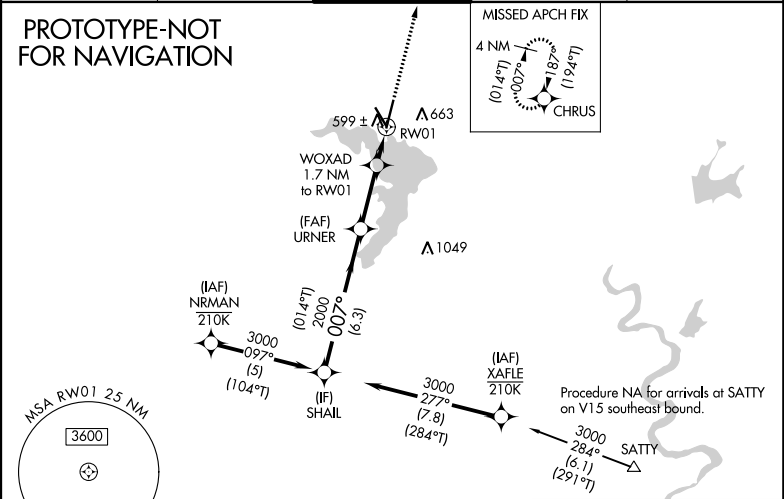
FIG

WAAS CH 65919 W01A	APP CRS 007°	Rwy Idg TDZE Apt Elev	7005 511 516
--	------------------------	-----------------------------	---

RNAV (GPS) RWY 1
WACO RGNL (ACT)

RNP APCH - GPS	For uncompensated Baro-VNAV systems, LNAV/VNAV NA below -8°C or above 54°C. Baro-VNAV and VDP NA when using PWG altimeter setting. Rwy 1 helicopter visibility reduction below ¾ SM NA. When local altimeter setting not received, use PWG altimeter setting and increase LPV DA to 792 feet and all visibilities ¼ SM. Increase LNAV/VNAV DA to 813 feet; increase all MDAs 40 feet and LNAV visibility Cat C/D ½ SM, and Circling visibility Cat D ¼ SM.			MISSED APPROACH: Climb to 3000 direct CHRUS and hold.
----------------	--	--	--	--

ATIS 123.85	WACO APP CON ★ 127.65 227.125	WACO TOWER ★ 119.3 (CTAF) 0 257.8	GND CON 121.9	UNICOM 122.95
-----------------------	---	---	-------------------------	-------------------------



2541

SHAIL		URNER		WOXAD 1.7 NM to RW01		3000 ↑	CHRUS ✦
3000		2000		1100		0.9 NM to RW01	
(01.4°T) 007°		2000		RW01		0.9 NM	
GP 3.00° TCH 55°		6.3 NM		2.8 NM		0.8 NM	
CATEGORY		A		B		C	
LPV DA		761-¾		250 (300-¾)			
LNAV/ VNAV DA		782-¾		271 (300-¾)			
LNAV MDA		860-1		349 (400-1)			
CIRCLING		940-1 424 (500-1)		980-1 464 (500-1)		1020-1½ 504 (600-1½)	
						1160-2 644 (700-2)	

ELEV 516 D TDZE 511

61
AS
TVR 589
556
5107 x 150
7107 x 150
007°

REIL Rwy 14
HIRL Rwy 1-19
MIRL Rwy 14-32

WACO, TEXAS
Amdt 2 FIG

31°37'N-97°14'W

WACO RGNL (ACT)
RNAV (GPS) RWY 1

AUTOMATED AL-439 RNAV (GPS) RWY 1

SC-3
8/13/24
COMPILER: AP
REVIEWER:
DBL CHKR:
EFF: FIG

