

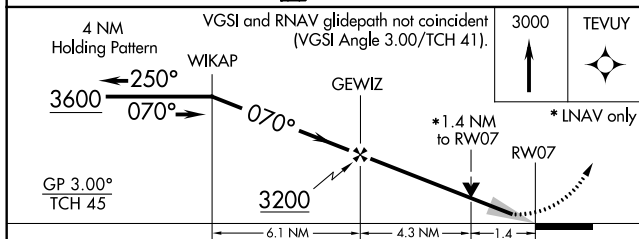
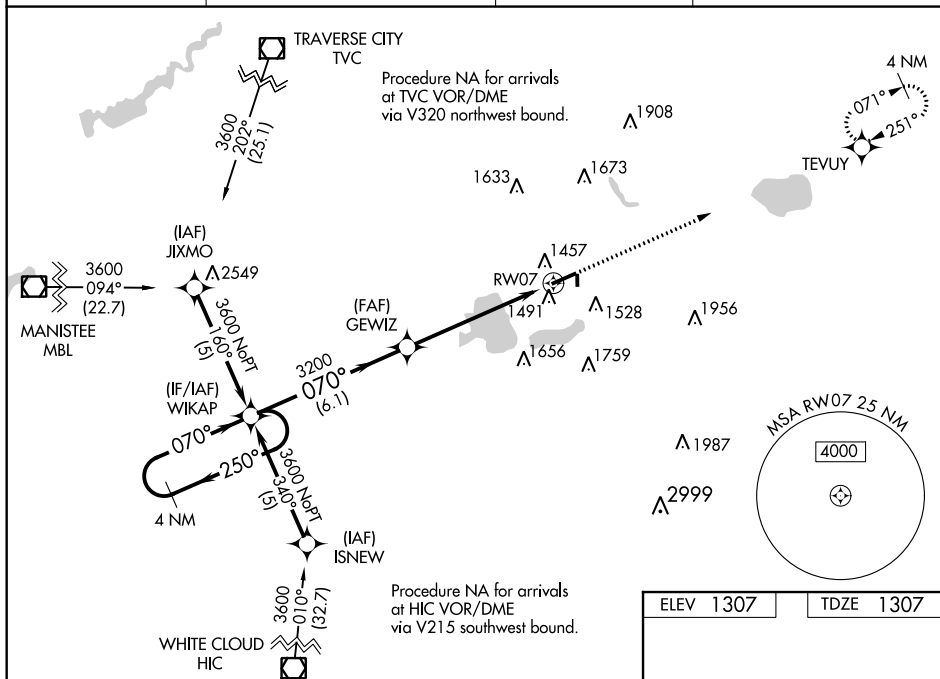
WAAS CH 86413 W07A	APP CRS 070°	Rwy Idg 5000 TDZE 1307 Apt Elev 1307
--	------------------------	---

RNAV (GPS) RWY 7

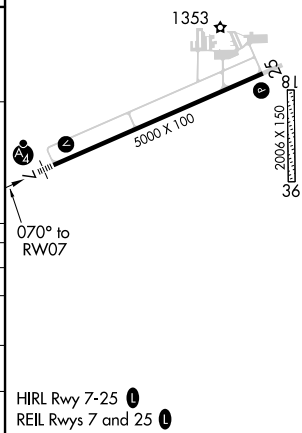
WEXFORD COUNTY (CAD)

<p>▼ DME/DME RNP-0.3 NA. When local altimeter setting not received, use Houghton Lake altimeter setting and increase all DA 137 feet and all MDA 140 feet, LPV and LNAV/VNAV visibility ½ mile all Cats, LNAV Cats C/D visibility ½ mile, Circling Cat C visibility ½ mile and Cat D visibility ¼ mile. Inop table does not apply to LNAV Cat C visibilities. For uncompensated Baro-VNAV systems, LNAV/VNAV NA below -17°C (2°F) or above 46°C (114°F). Baro-VNAV and VDP NA when using Houghton Lake altimeter setting.</p>	<p>MAISF</p> <p>MISSED APPROACH: Climb to 3000 direct TEVUY and hold.</p>
---	--

AWOS-3 128.325	MINNEAPOLIS CENTER 132.9 338.3	GCO 121.725	UNICOM 122.8 (CTAF) 0
--------------------------	--	-----------------------	---------------------------------



CATEGORY	A	B	C	D
LPV DA		1507-¾	200 (200-¾)	
LNAV/VNAV DA		1761-1½	454 (500-1½)	
LNAV MDA	1780-¾ 473 (500-¾)		1780-1¼ 473 (500-1¼)	1780-1½ 473 (500-1½)
CIRCLING	1900-1 593 (600-1)		1900-1½ 593 (600-1½)	1900-2 593 (600-2)



KCAD
WEXFORD COUNTY
CADILLAC MICHIGAN
CIRCLING 100K
ALL PROCEDURES

