

Flight Procedures Cover Page	Task Action: P-NOTAM	Task Type: IAP	Estimated Chart Date: 07/15/2021	APWS Task ID: 69C5E99C0A7D45A7AC4702D046447470	APWS Project ID: F244DC69011147C1A56C25CC4DE14EE0
Procedure: RNAV (GPS) RWY 17 AMDT 0B		Enroute: NO	Specialist: Mccarthy, Christopher		Agreement Number:
Airport ID: KMKY		Airport City: MARCO ISLAND			State: FL
Facility ID:	Facility Type:	Flight Inspection Remark Type:			
<p>Procedure Comments: P-NOTAM</p> <p>ORDER 8260.3, CHAPTER 2, NEW CIRCLING CRITERIA APPLIED.</p> <p>CONTROLLING OBSTACLES: CAT C TOWER (12-002721) 260151.21N/0813827.15W 346 (1A) CAT D TOWER (12-000212) 260311.32N/0814210.40W 534 (1A)</p> <p>JASON KRETSCHMER, 405-954-4019</p> <p style="text-align: center;"><i>Digitally signed by</i> <b>JASON KRETSCHMER</b> Apr 25, 2021</p>					

QUALITY  
16  
CHECKED

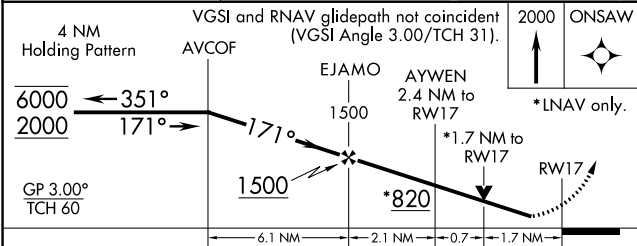
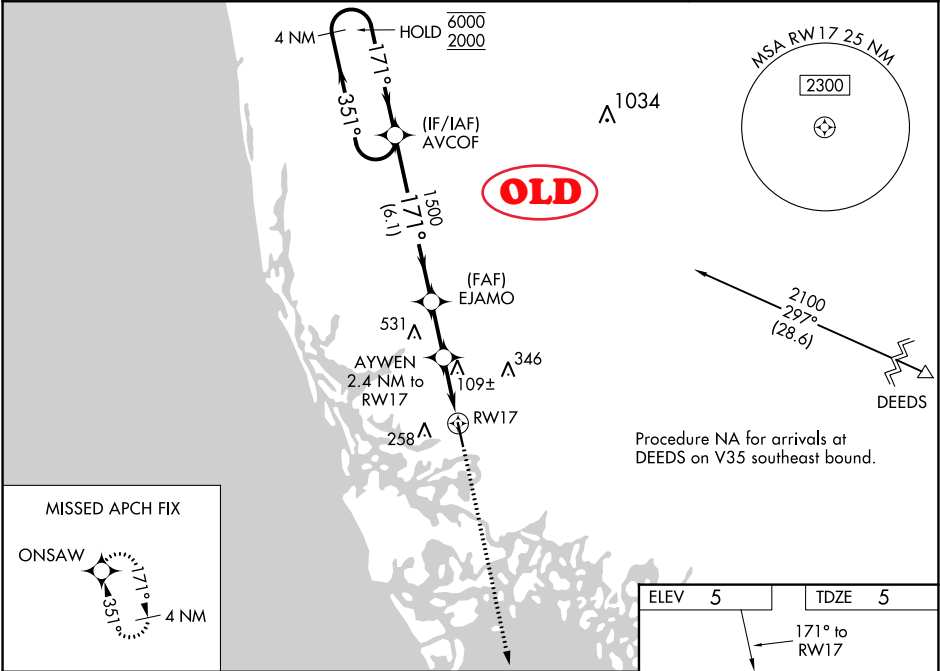
QUALITY  
26  
CHECKED

WAAS CH <b>93516</b> <b>W17A</b>	APP CRS <b>171°</b>	Rwy Idg TDZE Apt Elev	<b>5000</b> <b>5</b> <b>5</b>
--	------------------------	-----------------------------	-------------------------------------

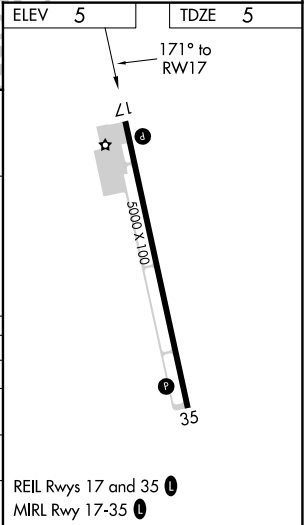
RNAV (GPS) RWY 17  
MARCO ISLAND EXECUTIVE (MKY)

PBN APCH.	Baro-VNAV and VDP NA when using Naples altimeter setting. Rwy 17 helicopter visibility reduction below ¾ SM NA. For uncompensated Baro-VNAV systems, LNAV/VNAV NA below 2°C or above 54°C. When local altimeter setting not received, use Naples altimeter setting and increase all DA 26 feet and all MDA 40 feet; increase LNAV/VNAV all Cats visibility ¼ SM.	MISSED APPROACH: Climb to 2000 direct ONSAW and hold.
-----------	--	---

AWOS-3PT <b>120.075</b>	FORT MYERS APP CON ★ <b>124.125 371.85</b>	CLNC DEL <b>120.8</b>	UNICOM <b>122.7</b> (CTAF) <b>0</b>
----------------------------	---	--------------------------	--



CATEGORY	A	B	C	D
LPV DA		300-1	295 (300-1)	
LNAV/VNAV DA		458-1½	453 (500-1½)	
LNAV MDA	560-1	555 (600-1)	560-1½ 555 (600-1½)	560-1¾ 555 (600-1¾)
CIRCLING	620-1	615 (700-1)	620-1¾ 615 (700-1¾)	620-2 615 (700-2)





**MKY**  
**MARCO ISLAND EXECUTIVE**  
**RNAV (GPS) RWY 17**  
**CIRCLING 100K**

