

Flight Procedures Cover Page	Task Action: P-NOTAM	Task Type: IAP	Estimated Chart Date: 03/25/2021	APWS Task ID: 69904BE766C043B3A5E6C7C741EFD40D	APWS Project ID: 4C9567FF48D746778DA199BCEAE5E2C6
Procedure: RNAV (GPS) RWY 18 AMDT 1B		Enroute: NO	Specialist: Lafferty, James		Agreement Number:
Airport ID: KIRS			Airport City: STURGIS		State: MI
Facility ID:	Facility Type:	Flight Inspection Remark Type:			
<p>Procedure Comments:</p> <p>P-NOTAM</p> <p>This Cancels FDC 0/8803</p> <p>Order 8260.3, chapter 2, New Circling Criteria Applied</p> <p>Contact Dave Teffeteller at 202-267-5177</p>					

QUALITY
45
CHECKED

Digitally signed by
MARY MCDONALD 12
Dec 16, 2020

QUALITY
12
CHECKED

WAAS CH 90230 W18A	APP CRS 184°	Rwy Idg TDZE 915 Apt Elev 924	5201
--	------------------------	---	-------------

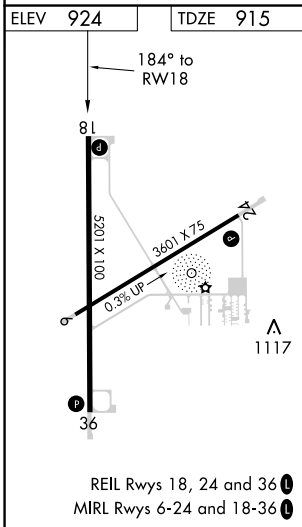
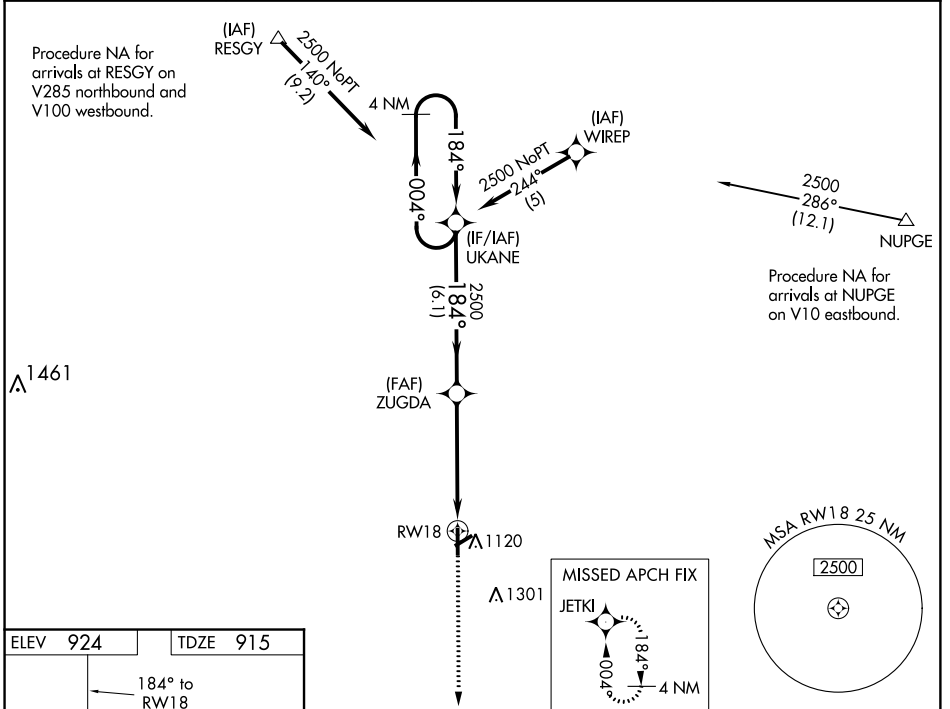
RNAV (GPS) RWY 18

KIRSCH MUNI (IRS)

⚠ Circling to Rwy 6, 24 NA at night. Baro-VNAV NA. When VGSi inop, Straight-In/Circling Rwy 18 procedure NA at night. DME/DME RNP-0.3 NA. Visibility reduction by helicopters NA. When local altimeter setting not received, use Three Rivers altimeter setting and increase all DA/MDA 40 feet; increase LPV visibility all Cats and LNAV Cat C and D ½ mile, increase LNAV/VNAV vis all Cats ¼ mile.

MISSED APPROACH: Climb to 3000 direct JETKI and hold.

AWOS-3 121.325	GREAT LAKES APP CON * 121.2 239.25	CLNC DEL 118.325	UNICOM 123.05 (CTAF) 0
--------------------------	--	----------------------------	----------------------------------



3000	JETKI	VGSi and RNAV glidepath not coincident (VGSi Angle 3.00/TCH 27).		4 NM Holding Pattern
ZUGDA		UKANE	RW18	
2500		2500	004° → 2500	
184°		184°	GP 3.00°	
4.9 NM		6.1 NM	TCH 40	
CATEGORY	A	B	C	D
LPV DA	1235-1 ½		320 (400-1 ½)	
LNAV/VNAV DA	1229-1		314 (300-1)	
LNAV MDA	1400-1	485 (500-1)	1400-1 ¾	485 (500-1 ¾)
CIRCLING	1440-1	516 (600-1)	1440-1 ½ 516 (600-1 ½)	1620-2 ¼ 696 (700-2 ¼)

AIRPORT ID	KIRS
AIRPORT NAME	KIRSCH MUNI
CITY	STURGIS
STATE	MI
Proc ID:	RNAV GPS RWY 18
Amdt #	1B
Scale	1:100,000

Circling CAT A/B TOWER (1130)
26-020022

Circling CAT C/D TOWER (1301)
26-000357

