

Flight Procedures Cover Page	Task Action: Abbreviated Amendment	Task Type: IAP	Estimated Chart Date: 09/10/2020	APWS Task ID: 68DAEF9815B845B49434901A5DA688AE	APWS Request ID: F2DB969BF2284995BFA6C4D5D1F06AC6
Procedure: HI - TACAN RWY 7 AMDT 6C		Enroute: NO	Specialist: Blanco, Joseph		Agreement Number:
Airport ID: KTOL	Airport Name: EUGENE F KRANZ TOLEDO EXPRESS		Airport City: TOLEDO		State: OH
Facility ID: TOL	Facility Type: TACAN	Flight Inspection Remark Type:			
<p>Procedure Comments: Airport Name Change from TOLEDO EXPRESS to EUGENE F KRANZ TOLEDO EXPRESS</p> <p>ABBREVIATED AMENDMENT</p> <p>PROCESSED IAW AIRCRAFT OPERATIONS GROUP (AJW-33) MEMO, OCTOBER 3, 2018, SUBJECT: FLIGHT INSPECTION REVIEW NOT REQUIRED.</p> <p>POC: Allan Will, AJV-A423, 405.954.6103.</p>					



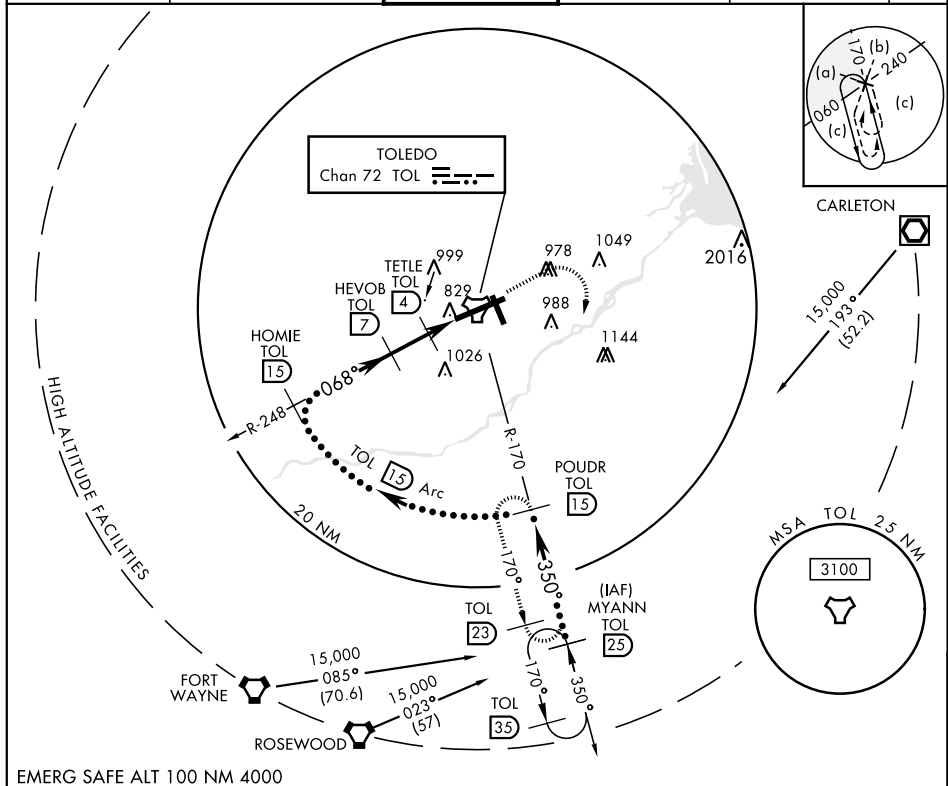
TOLEDO, OHIO

17117

HI-TACAN RWY 7

TACAN Chan 72	APCH CRS 068°	Rwy Idg TDZE 683 Arpt Elev 683	OLD JAL-184 [USAF]	TOLEDO EXPRESS (KTOL)
<p> </p>			<p> MISSED APPROACH: Climb to 3000 then right turn via TOL R-170 to POUADR and hold. </p>	

ATIS 118.75 290.225	TOLEDO APP CON 126.1 317.55	TOLEDO TOWER 118.1 285.4	GND CON 121.9 348.6	CLNC DEL 121.75 348.6	ASR
-------------------------------	---------------------------------------	------------------------------------	-------------------------------	---------------------------------	-----



MYANN R-170 [25]	POUADR R-170 [15]	HOMIE R-248 [15]	HEVOB [7]	TETLE [4]	TACAN [1.6]
15,000	10,000	4000	2200	1240	
<p> </p>					
CATEGORY	C	D	E		
S-7 *	1140/45	457 (500-7%)			
CIRCLING	1360-2 677 (700-2)	1400-2 ¼ 717 (800-2 ¼)	1400-2 ½ 717 (800-2 ½)		

TOLEDO, OHIO

41° 35' N-83° 48' W

TOLEDO EXPRESS (KTOL)

Amtd 6B 27APR17

HI-TACAN RWY 7

EC-2, 23 APR 2020 to 21 MAY 2020