

Flight Procedures Cover Page	Task Action: FLIGHT CHECK	Task Type: IAP	Estimated Chart Date: 07/11/2024	APWS Task ID: 68C514FFCA7C42E0BAFBC9CD13807700	APWS Project ID: 80F438CDAF414C0BBAC65CF708A46F88
Procedure: RNAV (RNP) Z RWY 35R AMDT 1		Enroute: NO	Specialist: Brandenburg, Phillip		Agreement Number:
Airport ID: KSDF			Airport City: LOUISVILLE		State: KY
Facility ID:	Facility Type:	Flight Inspection Remark Type: New FC Slot			
<div>Procedure Comments: ACTIVE DATA USED FOR KSDF</div> <div>APPROVAL LETTER (1) - MANDATORY ALTITUDES AT INTERMEDIATE FIXES MLLEY, TUSCR</div> <div>CONTACT ALLAN WILL 4059546103</div> <div>QUALITY 20 CHECKED</div> <div>QUALITY 38 CHECKED</div>					



Federal Aviation Administration

Memorandum

Date: November 14, 2023
To: Tom Lattimer, FAA CSA OSG PBN Co-Lead
From: Jeffrey Chester, TCID Airspace and Procedures Manager
Prepared by: Scott Enander, Senior ATC Specialist, NAVTAC Support
Subject: Letter of Approval Request KSDF RNAV (RNP) Z RWY 35R

KSDF RNAV RNP Z RWY 35R: MLLEY and TUSCR Mandatory Altitude.

KSDF TRACON requests AFS approval to chart mandatory altitude restrictions at the following fixes; MLLEY and TUSCR at 6000ft MSL for RNAV RNP Z RWY 35R instrument approach procedure for Louisville Muhammad Ali International Airport (KSDF).

Currently, FAAO 8260.19I paragraph 8-6-10n (1) requires Flight Standards approval from the Flight Technologies and Procedures Division to chart a mandatory altitude on the intermediate segment of an instrument approach procedure.

Therefore, Louisville TRACON requests to chart mandatory restrictions at MLLEY and TUSCR RNAV RNP Z RWY 35R. This is an ATC operational request to ensure vertical separation between aircraft on the approach and other TRACON traffic.

Sincerely,

JEFFREY W
CHESTER

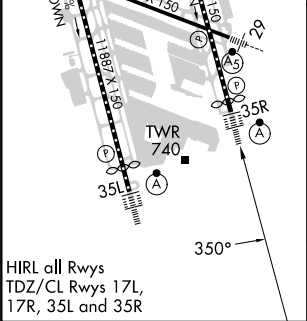
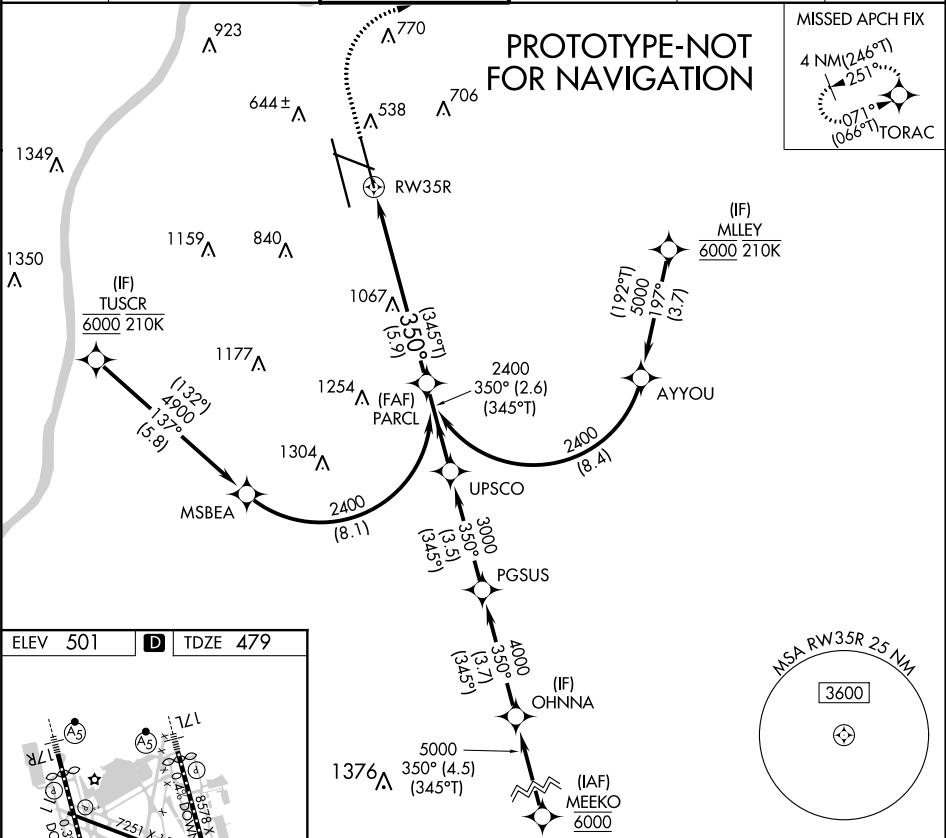
Digitally signed by
JEFFREY W CHESTER
Date: 2023.11.16
14:22:38 -05'00'


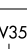

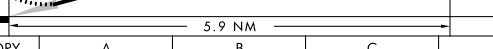
APP CRS	Rwy Idg	7800
350°	TDZE	479
	Apt Elev	501

RNAV (RNP) Z RWY 35R
LOUISVILLE MUHAMMAD ALI INTL (SDF)

RNP AR APCH - GPS.		ALSIF-2	MISSED APPROACH: Climb to 1600 then climbing right turn to 4000 direct TORAC and hold.
For uncompensated Baro-VNAV systems, procedure NA below -13°C or above 54°C. For inop ALS, increase RNP 0.12 all Cats visibility to RVR 4500. Simultaneous approach authorized.			

D-ATIS	LOUISVILLE APP CON	LOUISVILLE TOWER	GND CON	CLNC DEL	CPDLC
118.725	132.075 327.0	124.2 257.8	121.7 348.6	126.1 275.8	



1 600	4000	TORAC	VGSI and RNAV glidepath not coincident (VGSI Angle 3.00/TCH 72). See planview for multiple IF locations.		PARCL
					2400
					GP 3.00° TCH 60
5.9 NM					
CATEGORY	A		B	C	D
RNP 0.12 DA			792/24	313 (300-½)	
RNP 0.30 DA			892/40	413 (400-¾)	
AUTHORIZATION REQUIRED					

AUTHORIZATION REQUIRED

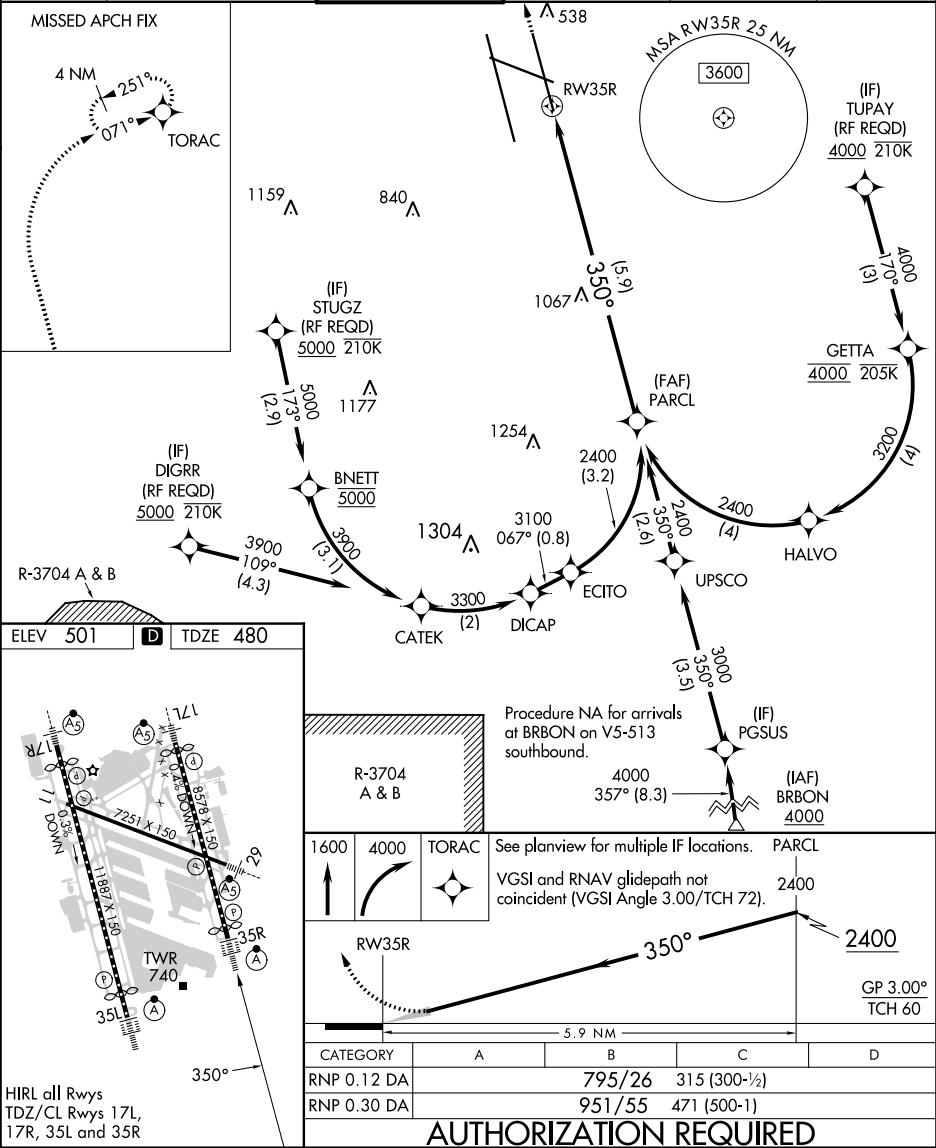
APP CRS	Rwy Idg	7800
350°	TDZE	480
	Apt Elev	501

CURRENT

RNAV (RNP) Z RWY 35R
LOUISVILLE MUHAMMAD ALI INTL (SDF')

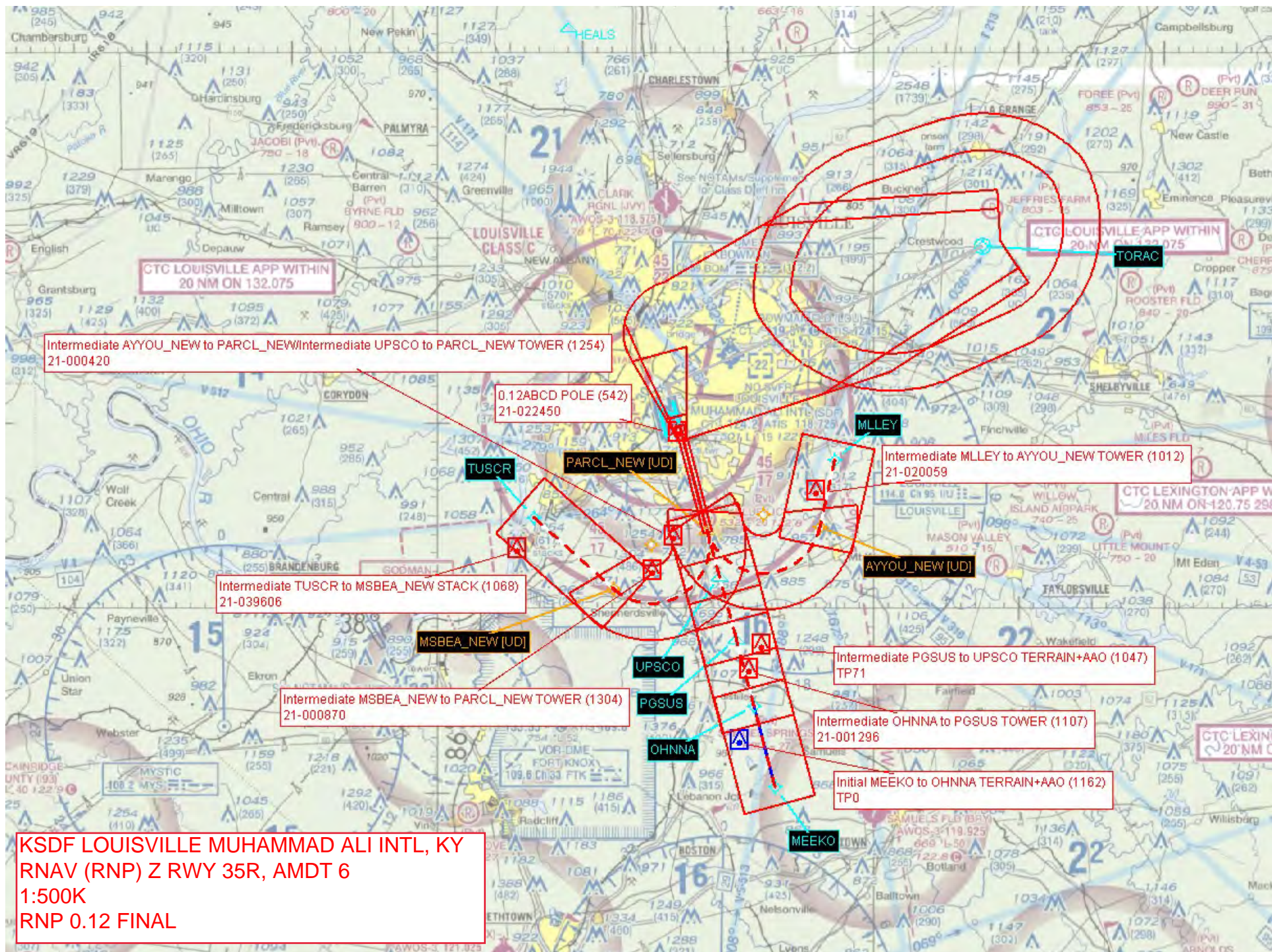
RNP AR APCH.	For uncompensated Baro-VNAV systems, procedure NA below -14°C or above 54°C. For inop ALS, increase RNP 0.12 all Cats visibility to RVR 5000 and RNP 0.30 all Cats visibility to 1¼ SM. Simultaneous approach authorized, except for arrivals at DIGRR, TUPAY, and STUGZ.	ALSF-2	MISSED APPROACH: Climb to 1600 then climbing right turn to 4000 direct TORAC and hold.
--------------	---	--------	--

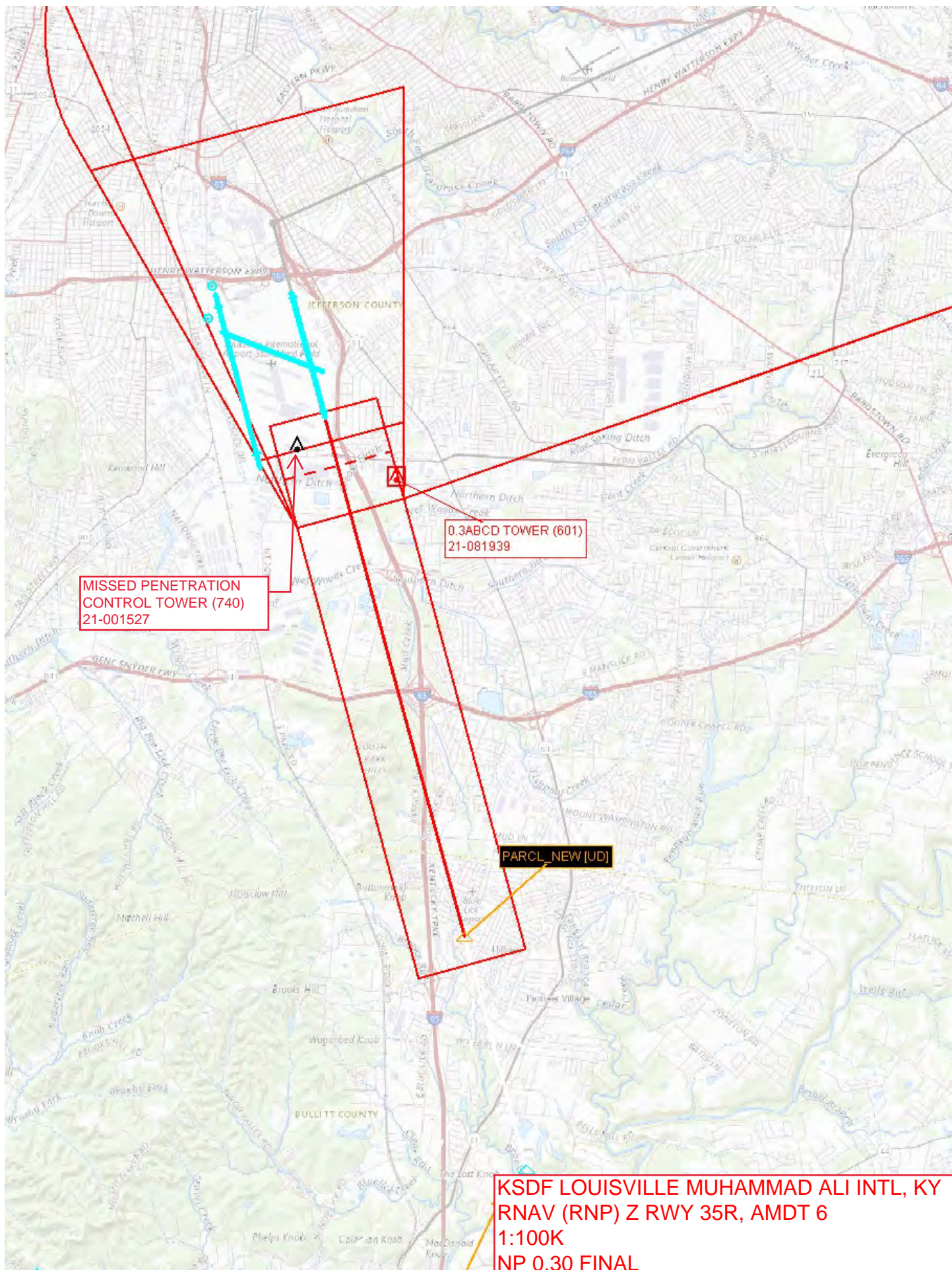
D-ATIS	LOUISVILLE APP CON	LOUISVILLE TOWER	GND CON	CLNC DEL	CPDLC
118.725	132.075 327.0	124.2 257.8	121.7 348.6	126.1 275.8	

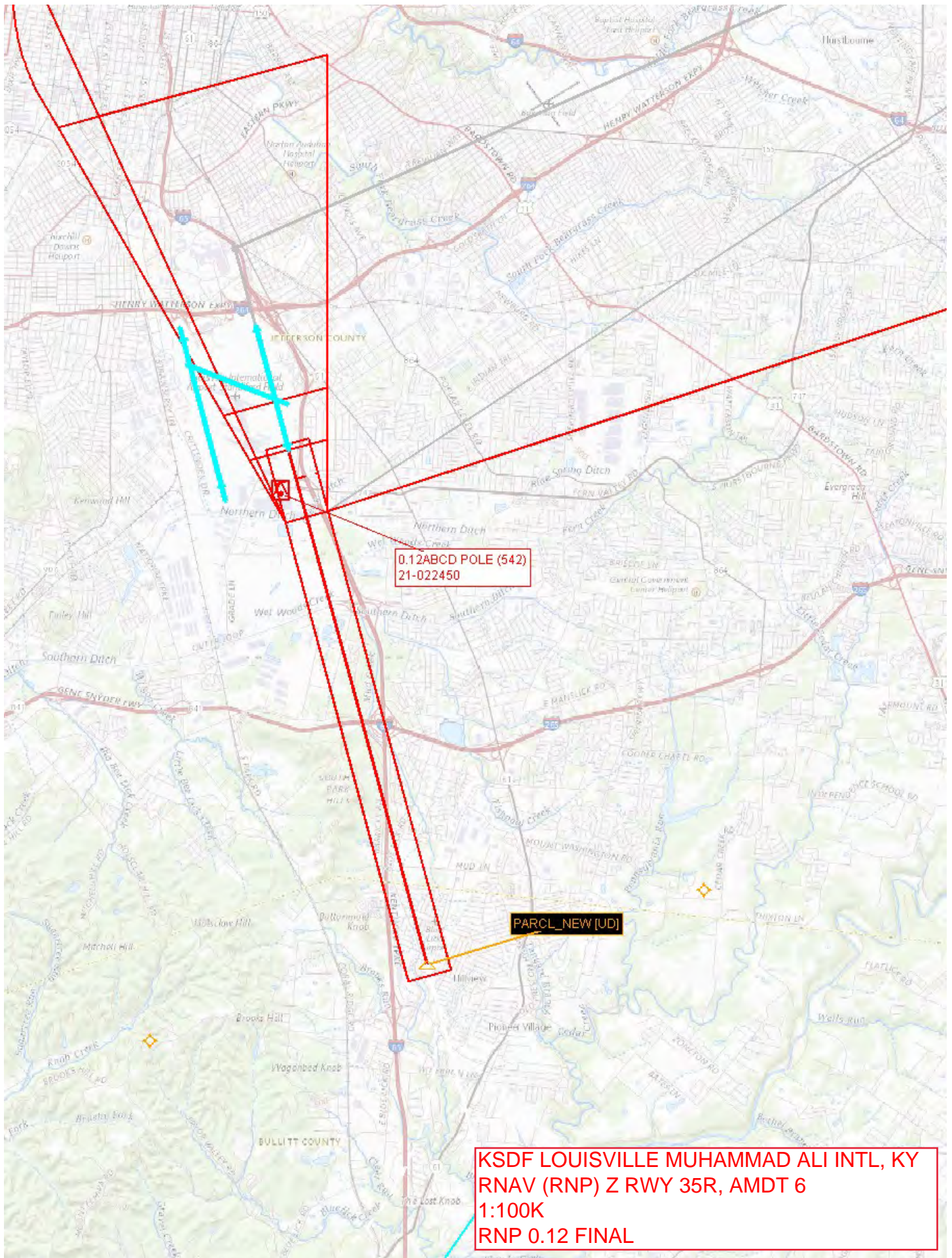


SE-1, 30 NOV 2023 to 28 DEC 2023

SE-1, 30 NOV 2023 to 28 DEC 2023







0.12ABCD POLE (542)
21-022450

PARCL_NEW (UD)

KSDF LOUISVILLE MUHAMMAD ALI INTL, KY
RNAV (RNP) Z RWY 35R, AMDT 6
1:100K
RNP 0.12 FINAL