

Flight Procedures Cover Page	Task Action: FLIGHT CHECK	Task Type: Segment	Estimated Chart Date: 07/16/2020	APWS Task ID: 689691CD090B4E6793F42B0141E0C7BC	APWS Request ID: 34517FEEE5D24F0FA3CD921E6922890E
Procedure: V230 PANOS CA TO PANOCHE VORTAC CA US		Enroute: YES	Specialist: Ciarlone, Mark		Agreement Number:
Airport ID:	Airport Name:		Airport City:		State:
Facility ID:	Facility Type:	Flight Inspection Remark Type: New FC Slot			

**Procedure Comments:**  
AIRWAY STARTING POINT: PANOS, CA 364123.45N/1211156.71W.

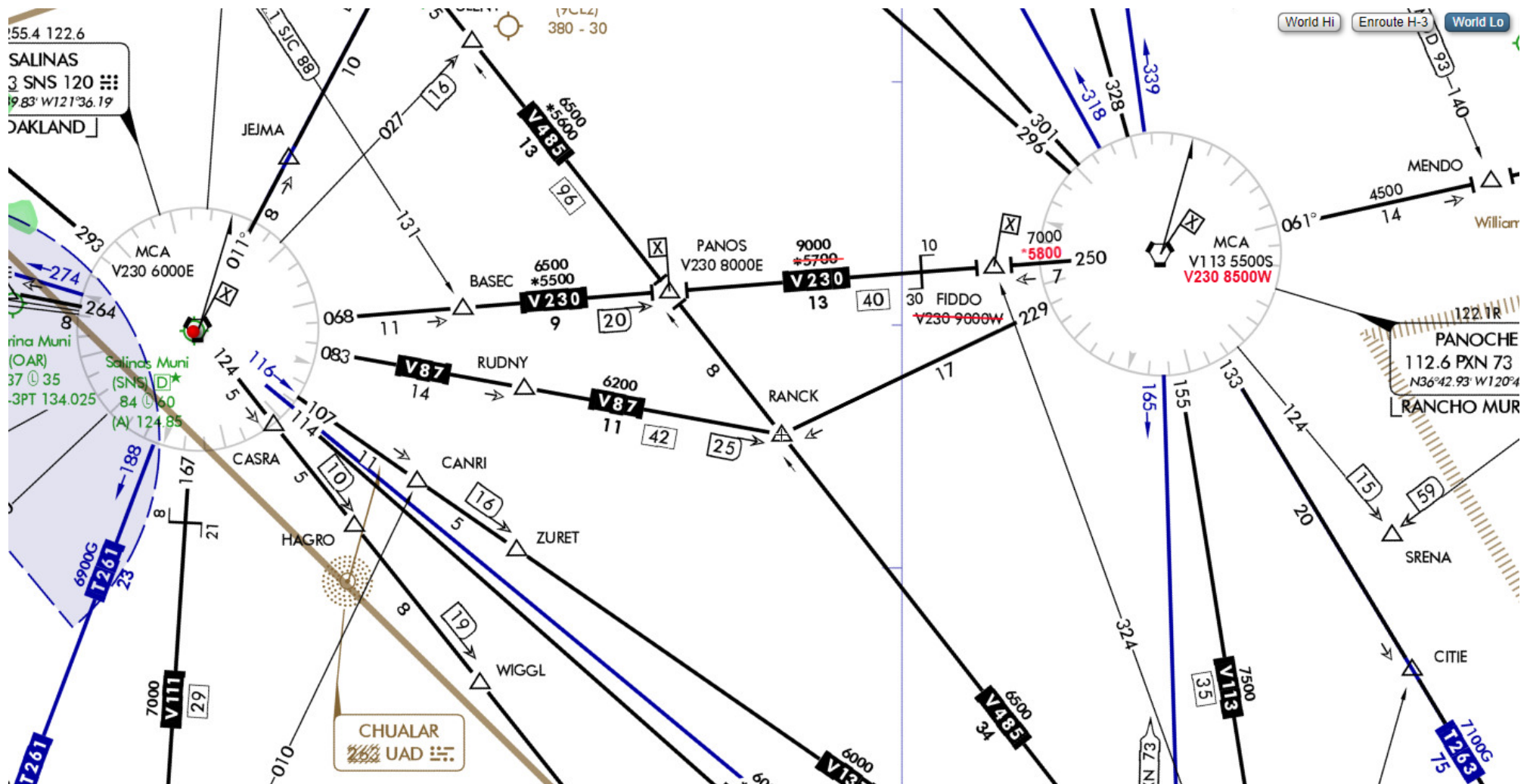
VOR-MON PROJECT: REMOVING & REPLACING PRIEST (ROM) VOR WITH MODESTO (MOD) VTAC ON TWO AIRWAY FIXES.

ESV(S) (2): MODESTO (MOD) VOR/DME, CA (2).

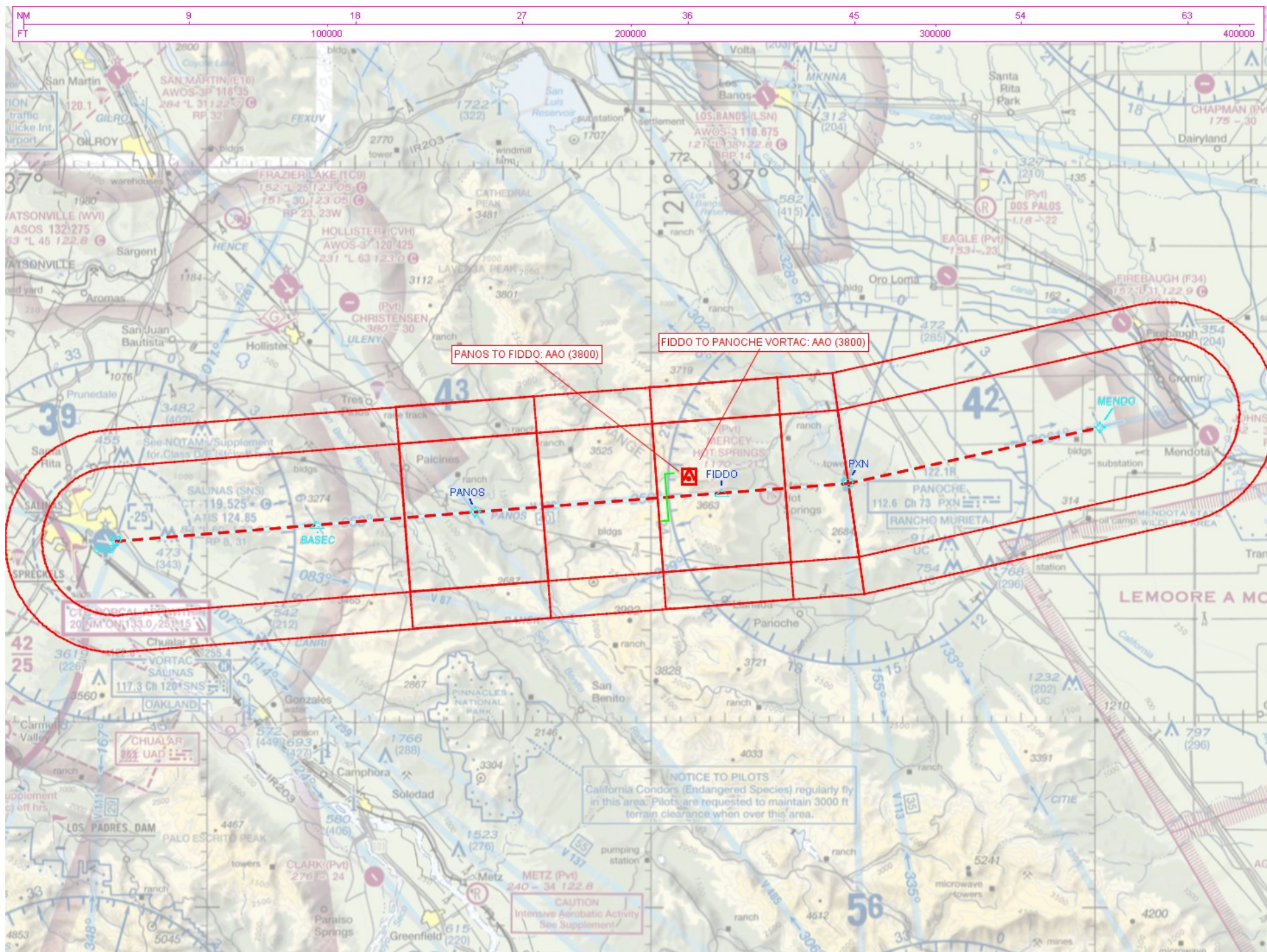
CONTACT: AL WILL, AJV-A423 MANAGER, 405.954.6103.



<b>FIPC BASIC FORM</b>						
<b>PROCEDURE:</b> V230 PANOS CA TO PANOCHE VORTAC CA US			<b>AIRPORT NAME:</b>		<b>AIRPORT ID:</b>	<b>SPECIAL CONTROL NO:</b> SP-03-024-20
<b>FAC ID:</b> V230		<b>CITY:</b>			<b>ST:</b> CA	<b>ORIG CHART DATE:</b> 07/16/2020
<b>DFL TYPE:</b> PROC/R	<b>THIRD PARTY:</b> <input type="checkbox"/> YES	<b>EST. TIME ON SITE:</b> 0.7	<b>REIMB. NUMBER:</b>	<b>PTS TASK ID:</b>		
<b>PREFLIGHT NOTES</b>						
<b>REVIEWER:</b>					<b>DATE:</b>	
<b>COMMENTS:</b> 3/23/2020 N84 - Incomplete. MOD ESV R-175/58/6500 (PANOS) unsat at 6,500 and 8,000. Terminated for wx. No other checks accomplished. (Molokie)					<b>CHECK ONE:</b> <input type="checkbox"/> FLT CK REQ <input type="checkbox"/> NFCR <input type="checkbox"/> REJECT <hr/> <div style="display: flex; justify-content: space-between; padding: 0 5px;"> <span>CPV COMPLETE?</span> <span>YES</span> <span>NO</span> </div> <div style="display: flex; justify-content: space-between; padding: 0 5px;"> <span></span> <span>X</span> <span></span> </div>	
<b>PROCEDURE RESULTS</b>						
<b>INSPECTION DATE:</b> 04/01/2020	<b>CREW #:</b> VN234	<b>N #:</b> N56	<b>INSTRUMENT PROCEDURE STATUS:</b> <input checked="" type="checkbox"/> SAT <input type="checkbox"/> SAT W/CHANGES <input type="checkbox"/> UNSAT		<b>ARINC CODING:</b> <input type="checkbox"/> SAT <input type="checkbox"/> SAT/GOLD <input type="checkbox"/> UNSAT	
<b>FLIGHT INSPECTOR SIGNATURE:</b> daniel c favorite @ 04/01/2020 14:37			<b>PRINTED NAME:</b> FAVORITE, DANIEL CHARLES			<b>NOTAM INITIATED?</b> <input type="checkbox"/> YES <input checked="" type="checkbox"/> NO
<b>FLIGHT INSPECTOR REMARKS:</b> FIDDO Fix ESV MOD 161/56 DME/7000 approved. PANOS ESV 175/58/6500 previously disapproved on 3/17/2020 in N84. PANOS ESV Unsat @ 6500 and 8000.						
<b>IN-FLIGHT OBSTACLE REPORT</b>						
<b>OBSTRUCTION ID #:</b>	<b>COORDINATES OR LOCATION:</b>	<b>GNSS ALTITUDE (MSL):</b>	<b>BAROMETRIC ALTITUDE (MSL):</b>	<b>HEIGHT ABOVE GROUND LEVEL:</b>		







**ESV Details**

Originating Office :AJV-5431		Airspace Docket Number :		Request Type :Establish		
<b>Facility Data</b>						
Chart Name:MODESTO		City:BuckleyMODESTO		Ident:MOD		State:CA
Type/Class: H-VOR		Frequency: M114.6		Reference Number: 20024938		
<b>Extended Service Volume Data: (Requesting Officer)</b>						
ESV ID	Radial 1	Radial 2	Distance	Minimum Altitude	Maximum Altitude	
FAA 765550 - 015	161		56	70	146	
Requirement: FIX FIDDO V230.						
Signature:CIARLONE MARK		Routing Symbol:AJV-A423				Date:02/24/2020
<b>Extended Service Volume Data: (FMO)</b>						
ESV ID	Radial 1	Radial 2	Distance	Minimum Altitude	Maximum Altitude	Action Type
FAA 765550 - 015	161		56	70	146	APPROVE
Requirement/Remarks: FIX FIDDO V230.APPROVED. FREQ. PROTECTION & FIELD STRENGTH. PENDING FLIGHT INSPECT @ REQUIRED. DIST. & MIN ALT..						
Signature:HEPSEN JOHN		Routing Symbol:			Date:02/24/2020	
<b>Extended Service Volume Data: (Super FMO)</b>						
ESV ID	Radial 1	Radial 2	Distance	Minimum Altitude	Maximum Altitude	Action Type
FAA 765550 - 015	161		56	70	146	APPROVE
Requirement/Remarks: FIX FIDDO V230.APPROVED. FREQ. PROTECTION & FIELD STRENGTH. PENDING FLIGHT INSPECT @ REQUIRED. DIST. & MIN ALT..						
Signature:Hughes Dennis		Routing Symbol:			Date:02/24/2020	
<b>Extended Service Volume Data: (FIFO)</b>						
ESV ID	Radial 1	Radial 2	Distance	Minimum Altitude	Maximum Altitude	Action Type
FAA 765550 - 015	161					
Requirement/Remarks:						
Signature:		Routing Symbol:			Date:	

**ESV Details**

Originating Office :AJV-5431		Airspace Docket Number :		Request Type :Establish		
<b>Facility Data</b>						
Chart Name:MODESTO		City:BuckleyMODESTO		Ident:MOD		State:CA
Type/Class: H-VOR		Frequency: M114.6		Reference Number: 20024939		
<b>Extended Service Volume Data: (Requesting Officer)</b>						
ESV ID	Radial 1	Radial 2	Distance	Minimum Altitude	Maximum Altitude	
FAA 765550 - 016	175		58	65	146	
Requirement: FIX PANOS V230						
Signature:CIARLONE MARK		Routing Symbol:AJV-A423				Date:02/24/2020
<b>Extended Service Volume Data: (FMO)</b>						
ESV ID	Radial 1	Radial 2	Distance	Minimum Altitude	Maximum Altitude	Action Type
FAA 765550 - 016	175		58	65	146	APPROVE
Requirement/Remarks: FIX PANOS V230APPROVED. FREQ. PROTECTION & FIELD STRENGTH. PENDING FLIGHT INSPECT @ REQUIRED. DIST. & MIN ALT..						
Signature:HEPSEN JOHN		Routing Symbol:			Date:02/24/2020	
<b>Extended Service Volume Data: (Super FMO)</b>						
ESV ID	Radial 1	Radial 2	Distance	Minimum Altitude	Maximum Altitude	Action Type
FAA 765550 - 016	175		58	65	146	APPROVE
Requirement/Remarks: FIX PANOS V230APPROVED. FREQ. PROTECTION & FIELD STRENGTH. PENDING FLIGHT INSPECT @ REQUIRED. DIST. & MIN ALT..						
Signature:Hughes Dennis		Routing Symbol:			Date:02/24/2020	
<b>Extended Service Volume Data: (FIFO)</b>						
ESV ID	Radial 1	Radial 2	Distance	Minimum Altitude	Maximum Altitude	Action Type
FAA 765550 - 016	175					
Requirement/Remarks:						
Signature:		Routing Symbol:			Date:	