

Flight Procedures Cover Page	Task Action: Abbreviated Amendment	Task Type: IAP	Estimated Chart Date: 12/29/2022	APWS Task ID: 688C5738272E495AB7BB7579394CC6C5	APWS Project ID: B0BF6C9F22504A8A942109490B525BD6
Procedure: VOR OR TACAN RWY 11L AMDT 1D		Enroute: NO	Specialist: Mccartney, Michael		Agreement Number:
Airport ID: KTUS			Airport City: TUCSON		State: AZ
Facility ID: TUS	Facility Type: VORTAC	Flight Inspection Remark Type:			
<p>Procedure Comments: HARD DATE.</p> <p>ACTIVE AIRPORT (KTUS) AND NAVAID (TUS VORTAC, RYN NDB) DATA UTILIZED.</p> <p>REMOVES AVQ NDB AND FEEDER SEGMENT DINGO TO TACUB FROM PROCEDURE (AVQ NDB WILL BE DECOMMISSIONED ON 12/29/2022).</p> <p>PROCESSED IAW TECHNICAL SUPPORT GROUP (AJF-17) MEMO DATED 07/07/2021, SUBJECT: GUIDANCE FOR PROCEDURAL CHANGES REQUIRING FLIGHT INSPECTION/VALIDATION.</p> <p>CONTACT: ERIC SUSKI, AJV-A431, MANAGER, (405) 954-7331.</p> <p><i>Digitally signed by</i> ERIC N SUSKI Oct 31, 2022</p>					

QUALITY
26
CHECKED

QUALITY
41
CHECKED

TUCSON, ARIZONA

AL-430 (FAA)


CURRENT

22195

VORTAC TUS 116.0 Chan 107	APP CRS 123°	Rwy ldg TDZE 2599 Apt Elev 2643
---	------------------------	---

VOR or TACAN RWY 11L

TUCSON INTL (TUS)

A ADF or DME required. For inoperative ALS, increase Cat E visibility to 1¼ SM.	MALSR 	MISSED APPROACH: Climb to 4000 then climbing right turn to 6000 (Cat. E 8000) on heading 300° and TUS VORTAC R-270 to RYN NDB/TUS 12.8 DME and hold.
---	--	--

ATIS 123.8 279.65	TUCSON APP CON 119.4 318.1	TUCSON TOWER 118.3 257.8	GND CON 124.4 348.6	CLNC DEL 126.65 326.2
-----------------------------	--------------------------------------	------------------------------------	-------------------------------	---------------------------------

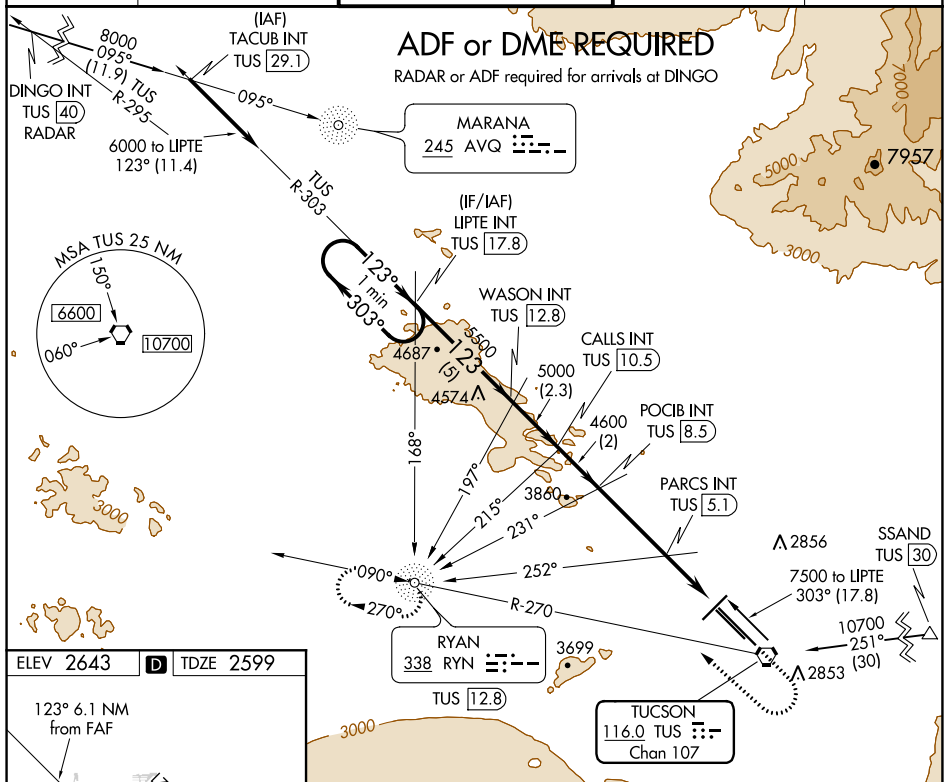


Diagram illustrating the HIRL Rwy 11L-29R holding pattern and associated altitudes and angles. The diagram shows a holding pattern with a 1-minute duration. Key altitudes and angles are indicated: 6000, 5500, 5000, 4600, 3480, 303°, 123°, 723°, 3.05°, 3.6°, 2.4°, 2.3 NM, 2 NM, 3.4 NM, 1.5 NM, 1.2 NM. The diagram also shows the TWR 2848 and the Rwy 11L-29R.

HIRL Rwy 11L-29R						
MIRL Rwys 3-21 and 11R-29L						
REIL Rwys 21, 29L and 29R						
FAF to MAP 6.1 NM						
Knots	60	90	120	150	180	
Min:Sec	6:06	4:04	3:03	2:26	2:02	

Diagram illustrating the holding pattern and descent path for Rwy 11L-29R. The diagram shows a holding pattern with a 1-minute duration. Key altitudes and angles are indicated: 6000, 5500, 5000, 4600, 3480, 303°, 123°, 723°, 3.05°, 3.6°, 2.4°, 2.3 NM, 2 NM, 3.4 NM, 1.5 NM, 1.2 NM. The diagram also shows the TWR 2848 and the Rwy 11L-29R.

CATEGORY	A	B	C	D	E
S-11L	3020/24	421 (500-½)	3020/40	421 (500-¾)	
CIRCLING	3160-1 517 (600-1)	3180-1 537 (600-1)	3200-1½ 557 (600-1½)	3660-3 1017 (1100-3)	3920-3 1277 (1300-3)

TUCSON, ARIZONA

Amdt 1C 15JUL21

32°07'N-110°56'W

TUCSON INTL (TUS)

VOR or TACAN RWY 11L

SW-4, 08 SEP 2022 to 06 OCT 2022

SW-4, 08 SEP 2022 to 06 OCT 2022