

## DME DME Assessment Results for DADES7 path BEAUX\_HIBAC

### Results Summary

Flyability:	Completed
DME/DME:	Completed - No Critical DMEs
Name:	Miles CTR Carpenter
Project File:	C:\Users\Miles CTR Carpenter\AppData\Local\Microsoft\Windows\INetCache\IE\R943PCZ1\DADES 20200805 EMAIL.tgs
Output File:	C:\Users\Miles CTR Carpenter\Desktop\KTPA STARs DME\KTPA DADES STAR DME\KTPA [IFPA] DADES7 20200811_0732 EDT\BEAUX_HIBAC\KTPA DADES7 RNAV STAR BEAUX HIBAC 20200811_0732 EDT.pdf
Procedure Name:	DADES7
Software: DmeDmePlugin:	6.1.0
Date/Time:	08/11/2020 07:32 EDT
Databases:	DTED 0max

### Failures

No Failures

### Warnings

No Warnings

### Notes For Flight Check

None

### Flight Plan

Name	Type	Lat/Lon	Altitude (ft)	VNAV Mode	Ground Speed (kts)	Turn Type	Leg Type
BEAUX	WP	N28° 58' 12.714", W079° 58' 29.185"	20000	VNAV	260	FLY_BY	TF
HIBAC	WP	N29° 05' 38.630", W079° 34' 04.650"	20000	VNAV	260	FLY_BY	TF

### Flyability

Flight Type:	RNAV_STAR
Selected Airport:	KTPA [IFPA]
Climb Gradient:	None assigned
Speeds:	200 Ground Speed to 11000 FT
	240 Ground Speed to 18000 FT
	260 Ground Speed to 24000 FT
	340 Ground Speed above 24000 FT
Descent During a Turn:	Allowed
VNAV Mode:	Flight Plan

## DME DME Assessment Results for DADES7 path BEAUX\_HIBAC

DME/DME	
RNP:	RNP 2
Flight Mode:	Manual
Line of Sight (DTED Level 0 Max):	Evaluated
Inertial Drift:	Enabled
Initial Drift:	0.558 NM
INS Drift Rate:	8.0 NM/Hour
Range Mode:	OSV
RNP Edges:	Evaluated
Min DME Range:	3.0 NM
DME Types:	DME, VOR-DME, VORTAC
DME Include Angles:	30 to 150
Critical DMEs:	Not Allowed
DoD Facilities:	Not included
Foreign Facilities:	Included
High DMEs:	Included
Low DMEs:	Included
Terminal DMEs:	Included
Flight Check DMEs:	Not selected
Higher Altitudes:	Not Evaluated
Near Maximum Altitude:	Not Evaluated
Automatic ESVs:	Not enabled
Disabled DMEs:	ZFP

DME/DME (Continued)										
DMEs Used										
#	Name	Lat/Lon	MAGVAR	Range	Type	Source	Critical	Status	Time	Distance
1	LAL	N27° 59' 10.253", W082° 00' 50.009"	1.0 E	130	H	IFPA	NO	Enabled	29.6 %	29.6 %
2	CRG	N30° 20' 19.965", W081° 30' 35.738"	3.0 W	130	H	IFPA	NO	Enabled	100 %	100 %
3	TRV	N27° 40' 42.326", W080° 29' 23.012"	7.0 W	130	H	IFPA	NO	Enabled	100 %	100 %
4	OMN	N29° 18' 11.707", W081° 06' 45.706"	0.0 E	130	H	IFPA	NO	Enabled	100 %	100 %
5	ORL	N28° 32' 33.802", W081° 20' 06.053"	0.0 E	130	H	IFPA	NO	Enabled	100 %	100 %
6	ZFP	N26° 33' 19.250", W078° 41' 52.250"	3.0 W	130	H	IFPA	NO	Disabled		

Flight Check DME Selection						
Distance [NM]	Selected DMEs					Alternate
0.0	TRV	OMN	ORL	CRG	LAL	
6.8	TRV	OMN	CRG	ORL		

Inertial Drift Segments			
#	Start Location	End Location	Length [NM]

Available DMEs by Waypoints		
Waypoint Before	Waypoint After	DME List
BEAUX	HIBAC	OMN, LAL, ORL, TRV, CRG

# DME DME Assessment Results for DADES7 path BEAUX\_HIBAC

## User Data Files

# File Name

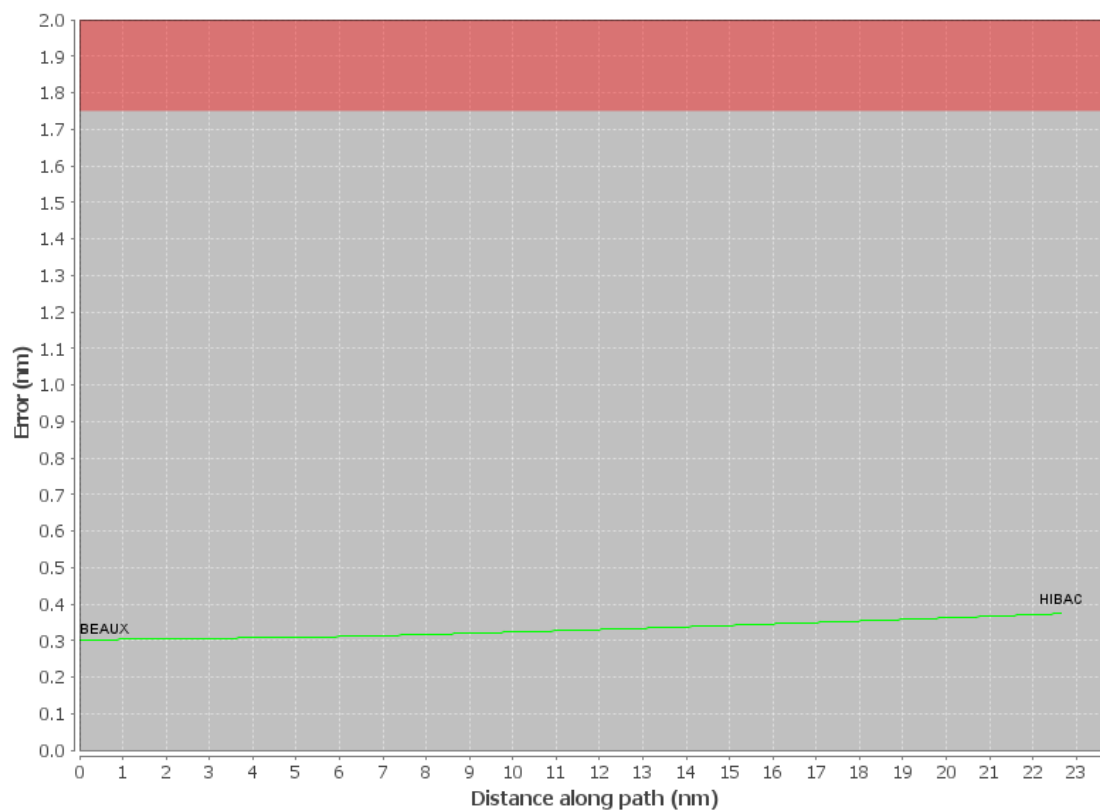
None

## User DMEs

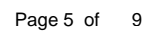
#	Name	Lat/Lon	MAGVAR	Range	Elevation [ft]	Frequency	Replaces	Status
1	GNV FAA 704230-045 GNV [IFPA]	N29° 41' 31.613", W082° 16' 22.701"	4.0 W	40	160.8	116.2	GNV FAA 704230-045	
ESV:		Bearing [True]: 96.0° to 196.0° Bearing [Mag]: 100.0° to 200.0°				Arc Distance: Out to 92.0 NM Altitude: 6000.0 to 18000.0 ft		
2	OMN FAA 694106-23 OMN [IFPA]	N29° 18' 11.707", W081° 06' 45.706"	0.0 E	130	18.8	112.6	OMN FAA 694106-23	
ESV:		Bearing [True]: 113.0° to 187.0° Bearing [Mag]: 113.0° to 187.0°				Arc Distance: Out to 70.0 NM Altitude: 4000.0 to 18000.0 ft		
3	CTY FAA 704013-35 CTY [IFPA]	N29° 35' 56.403", W083° 02' 55.651"	2.0 W	40	55.8	112.0	CTY FAA 704013-35	
ESV:		Bearing [True]: 113.0° to 137.0° Bearing [Mag]: 115.0° to 139.0°				Arc Distance: Out to 64.0 NM Altitude: 8000.0 to 18000.0 ft		
4	OMN FAA 694106-18 OMN [IFPA]	N29° 18' 11.707", W081° 06' 45.706"	0.0 E	130	18.8	112.6	OMN FAA 694106-18	
ESV:		Bearing [True]: 215.0° to 315.0° Bearing [Mag]: 215.0° to 315.0°				Arc Distance: Out to 90.0 NM Altitude: 8000.0 to 18000.0 ft		

# DME DME Assessment Results for DADES7 path BEAUX\_HIBAC

## DME Error

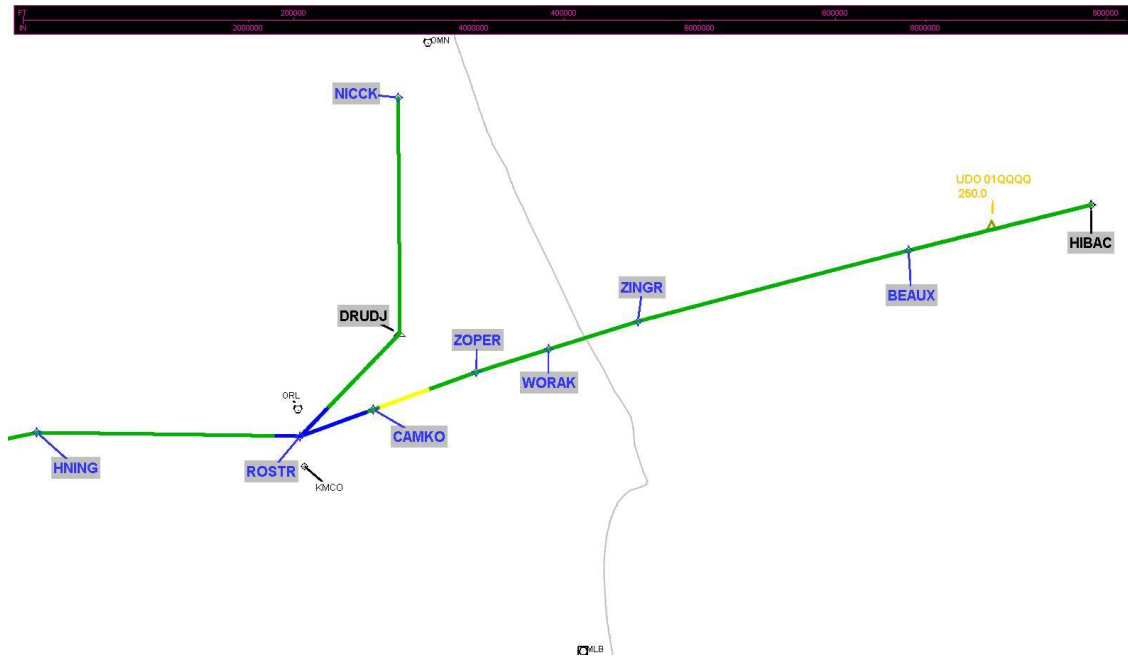


### Graphic Depiction 1



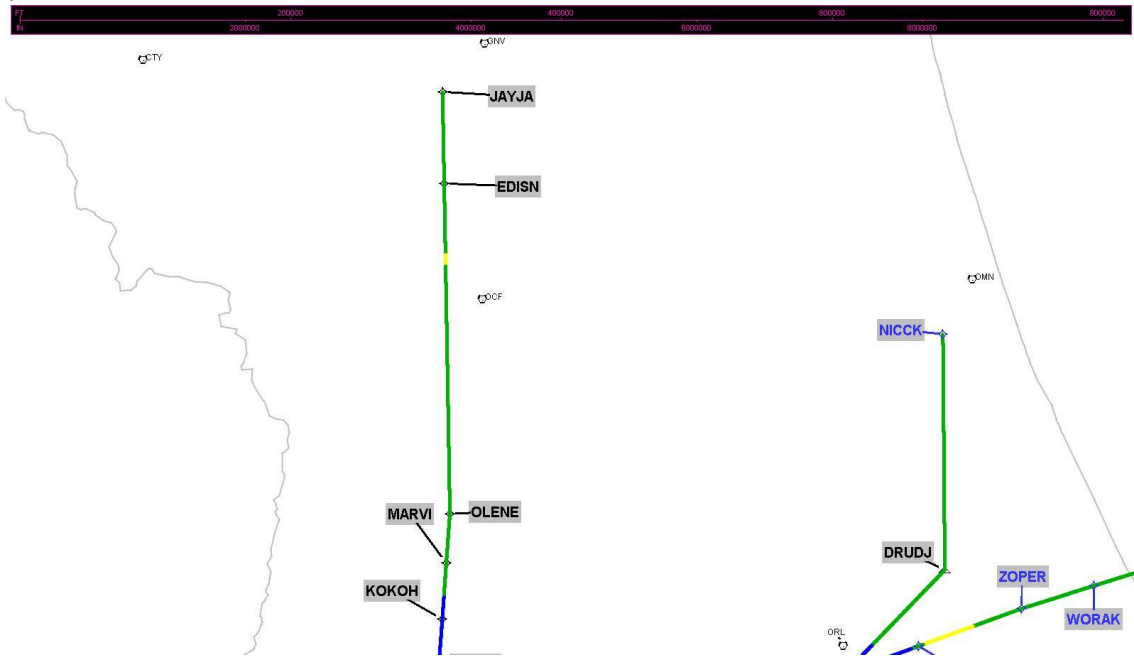
## DME DME Assessment Results for DADES7 path BEAUX\_HIBAC

Graphic Depiction 2



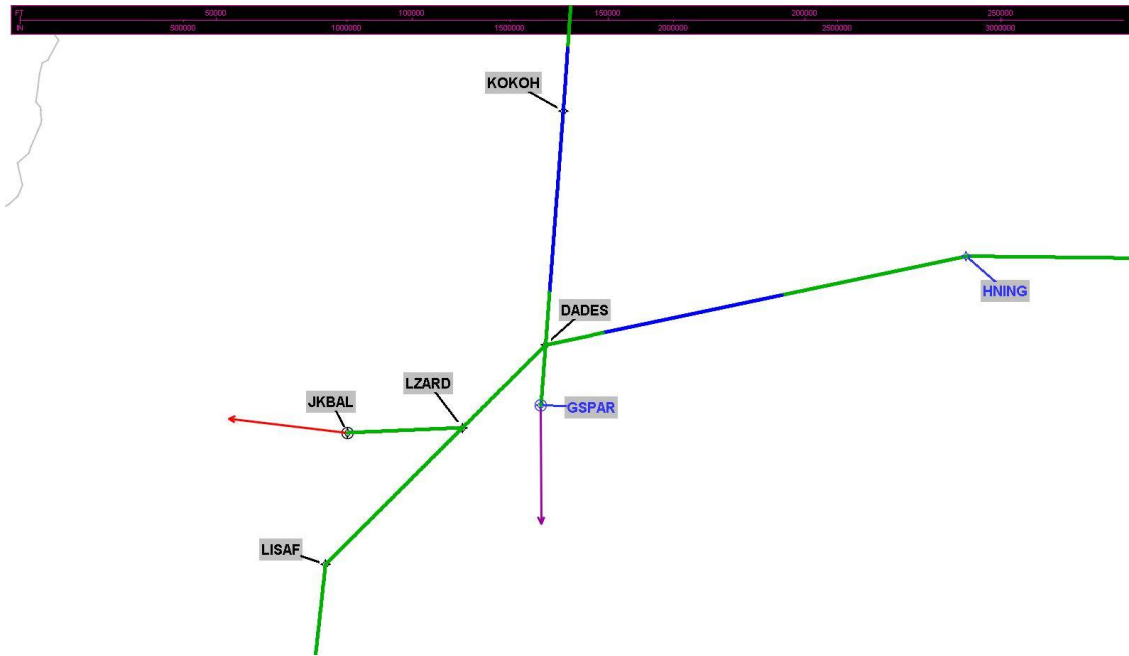
# DME DME Assessment Results for DADES7 path BEAUX\_HIBAC

Graphic Depiction 3



## DME DME Assessment Results for DADES7 path BEAUX\_HIBAC

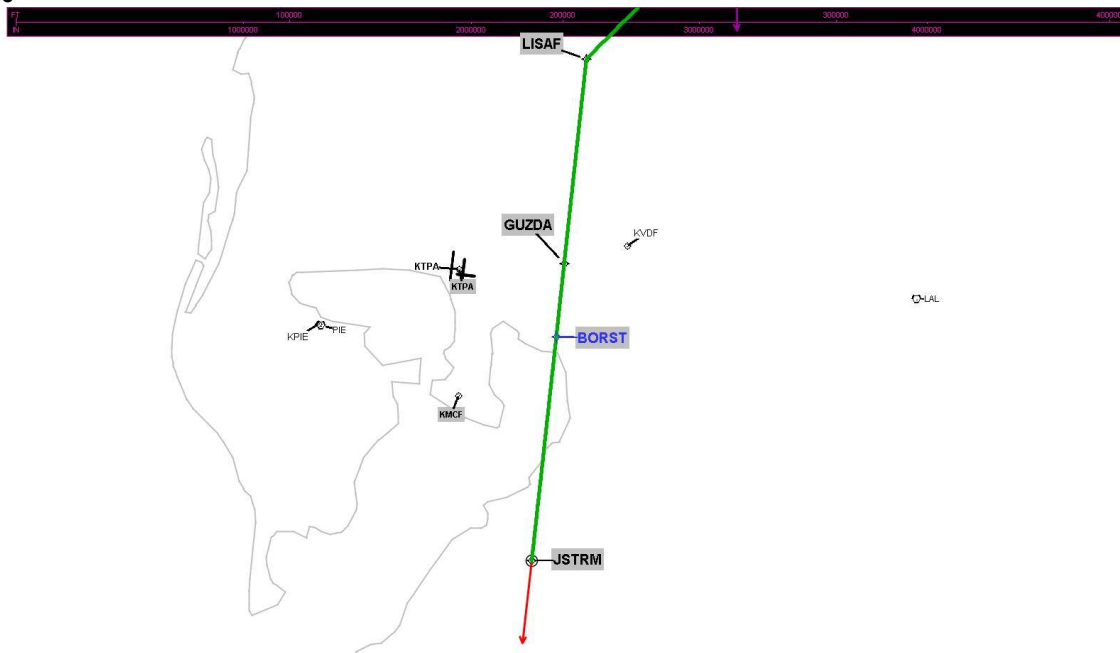
Graphic Depiction 4





# DME DME Assessment Results for DADES7 path BEAUX\_HIBAC

Graphic Depiction 5



## DME DME Assessment Results for DADES7 path HIBAC\_JSTRM

### Results Summary

Flyability:	Completed
DME/DME:	Completed - No Critical DMEs
Name:	Miles CTR Carpenter
Project File:	C:\Users\Miles CTR Carpenter\AppData\Local\Microsoft\Windows\INetCache\IE\R943PCZ1\DADES 20200805 EMAIL.tgs
Output File:	C:\Users\Miles CTR Carpenter\Desktop\KTPA STARs DME\KTPA DADES STAR DME\KTPA [IFPA] DADES7 20200811_0732 EDT\HIBAC_JSTRM\KTPA DADES7 RNAV STAR HIBAC JSTRM 20200811_0732 EDT.pdf
Procedure Name:	DADES7
Software: DmeDmePlugin:	6.1.0
Date/Time:	08/11/2020 07:32 EDT
Databases:	DTED 0max

### Failures

No Failures

### Warnings

No Warnings

### Notes For Flight Check

None

### Flight Plan

Name	Type	Lat/Lon	Altitude (ft)	VNAV Mode	Ground Speed (kts)	Turn Type	Leg Type
HIBAC	WP	N29° 05' 38.630", W079° 34' 04.650"	20000	VNAV	260	FLY_BY	TF
BEAUX	WP	N28° 58' 12.714", W079° 58' 29.185"	20000	VNAV	260	FLY_BY	TF
ZINGR	WP	N28° 46' 48.223", W080° 34' 38.558"	18000	VNAV	260	FLY_BY	TF
WORAK	WP	N28° 42' 29.125", W080° 46' 31.156"	16000	VNAV	260	FLY_BY	TF
ZOPER	WP	N28° 38' 57.390", W080° 56' 10.650"	14000	VNAV	260	FLY_BY	TF
CAMKO	WP	N28° 33' 20.850", W081° 09' 48.090"	14000	VNAV	260	FLY_BY	TF
ROSTR	WP	N28° 29' 20.920", W081° 19' 27.980"	13000	VNAV	260	FLY_BY	TF
HNING	WP	N28° 27' 00.120", W081° 55' 37.340"	10000	VNAV	260	FLY_BY	TF
DADES	WP	N28° 21' 45.620", W082° 15' 07.800"	4000	VNAV	260	FLY_BY	TF
LZARD	WP	N28° 18' 00.550", W082° 18' 42.630"	4000	VNAV	210	FLY_BY	TF
LISAF	WP	N28° 11' 48.360", W082° 24' 37.170"	4000	VNAV	210	FLY_BY	TF
GUZDA	WP	N27° 59' 26.580", W082° 24' 55.150"	4000	VNAV	210	FLY_BY	TF
BORST	WP	N27° 55' 01.419", W082° 25' 00.771"	4000	VNAV	210	FLY_BY	TF
JSTRM	WP	N27° 41' 30.570", W082° 25' 21.070"	4000	VNAV	210	FLY_OVER	TF

## DME DME Assessment Results for DADES7 path HIBAC\_JSTRM

Flyability	
Flight Type:	RNAV_STAR
Selected Airport:	KTPA [IFPA]
Climb Gradient:	None assigned
Speeds:	200 Ground Speed to 11000 FT
	240 Ground Speed to 18000 FT
	260 Ground Speed to 24000 FT
	340 Ground Speed above 24000 FT
Descent During a Turn:	Allowed
VNAV Mode:	Flight Plan

DME/DME	
RNP:	RNP 2
Flight Mode:	Manual
Line of Sight (DTED Level 0 Max):	Evaluated
Inertial Drift:	Enabled
Initial Drift:	0.558 NM
INS Drift Rate:	8.0 NM/Hour
Range Mode:	OSV
RNP Edges:	Evaluated
Min DME Range:	3.0 NM
DME Types:	DME, VOR-DME, VORTAC
DME Include Angles:	30 to 150
Critical DMEs:	Not Allowed
DoD Facilities:	Not included
Foreign Facilities:	Included
High DMEs:	Included
Low DMEs:	Included
Terminal DMEs:	Included
Flight Check DMEs:	Not selected
Higher Altitudes:	Not Evaluated
Near Maximum Altitude:	Not Evaluated
Automatic ESVs:	Not enabled
Disabled DMEs:	ZFP

DME/DME (Continued)										
DMEs Used										
#	Name	Lat/Lon	MAGVAR	Range	Type	Source	Critical	Status	Time	Distance
1	LAL	N27° 59' 10.253", W082° 00' 50.009"	1.0 E	130	H	IFPA	NO	Enabled	56.9 %	54.9 %
2	CRG	N30° 20' 19.965", W081° 30' 35.738"	3.0 W	130	H	IFPA	NO	Enabled	13.1 %	13.7 %
3	SRQ	N27° 24' 25.256", W082° 33' 49.185"	5.0 W	130	H	IFPA	NO	Enabled	12.9 %	11 %
4	TRV	N27° 40' 42.326", W080° 29' 23.012"	7.0 W	130	H	IFPA	NO	Enabled	35 %	36.6 %
5	OMN	N29° 18' 11.707", W081° 06' 45.706"	0.0 E	130	H	IFPA	NO	Enabled	49.3 %	51.6 %
6	GNV	N29° 41' 31.613", W082° 16' 22.701"	4.0 W	40	L	IFPA	NO	Enabled	21.2 %	22.2 %
7	PIE	N27° 54' 27.952", W082° 41' 03.513"	5.0 W	130	H	IFPA	NO	Enabled	27.2 %	23.8 %
8	MLB	N28° 06' 19.120", W080° 38' 06.460"	7.0 W	40	L	IFPA	NO	Enabled	3.1 %	3.3 %
9	ORL	N28° 32' 33.802", W081° 20' 06.053"	0.0 E	130	H	IFPA	NO	Enabled	63.1 %	66 %
10	ZFP	N26° 33' 19.250", W078° 41' 52.250"	3.0 W	130	H	IFPA	NO	Disabled		

## DME DME Assessment Results for DADES7 path HIBAC\_JSTRM

Flight Check DME Selection						
Distance [NM]	Selected DMEs					Alternate
0.0	TRV	OMN	CRG	ORL		
15.9	TRV	OMN	CRG	ORL	LAL	
26.4	TRV	OMN	ORL	CRG		
26.5	TRV	OMN	ORL			
46.5	TRV	ORL	OMN	LAL		
70.4	TRV	ORL	OMN			
70.6	OMN	ORL				
83.0	OMN	ORL	MLB	GNV		
89.4	OMN	ORL				
90.9						
102.7	GNV	ORL				
113.3	GNV	ORL	LAL			
126.9	GNV	ORL	LAL	OMN		
135.5	LAL	ORL	GNV			
139.2						
146.9	PIE	LAL				
171.5	SRQ	LAL	PIE			

Inertial Drift Segments				
#	Start Location	End Location	Length [NM]	
1	N28° 32' 58.900", W081° 10' 41.240"	N28° 29' 07.056", W081° 23' 08.416"	11.773	
2	N28° 24' 44.054", W082° 04' 05.245"	N28° 22' 29.996", W082° 12' 23.394"	7.6539	

Available DMEs by Waypoints		
Waypoint Before	Waypoint After	DME List
HIBAC	BEAUX	OMN, LAL, ORL, TRV, CRG
BEAUX	ZINGR	OMN, LAL, ORL, TRV, CRG
ZINGR	WORAK	OMN, LAL, ORL, TRV
WORAK	ZOPER	OMN, LAL, ORL, TRV
ZOPER	CAMKO	OMN, MLB, ORL, GNV
CAMKO	ROSTR	OMN, ORL
ROSTR	HNING	OMN, LAL, ORL, GNV
HNING	DADES	OMN, LAL, ORL, PIE, GNV
DADES	LZARD	LAL, PIE
LZARD	LISAF	LAL, PIE
LISAF	GUZDA	SRQ, LAL, PIE
GUZDA	BORST	SRQ, LAL, PIE
BORST	JSTRM	SRQ, LAL, PIE

# DME DME Assessment Results for DADES7 path HIBAC\_JSTRM

## User Data Files

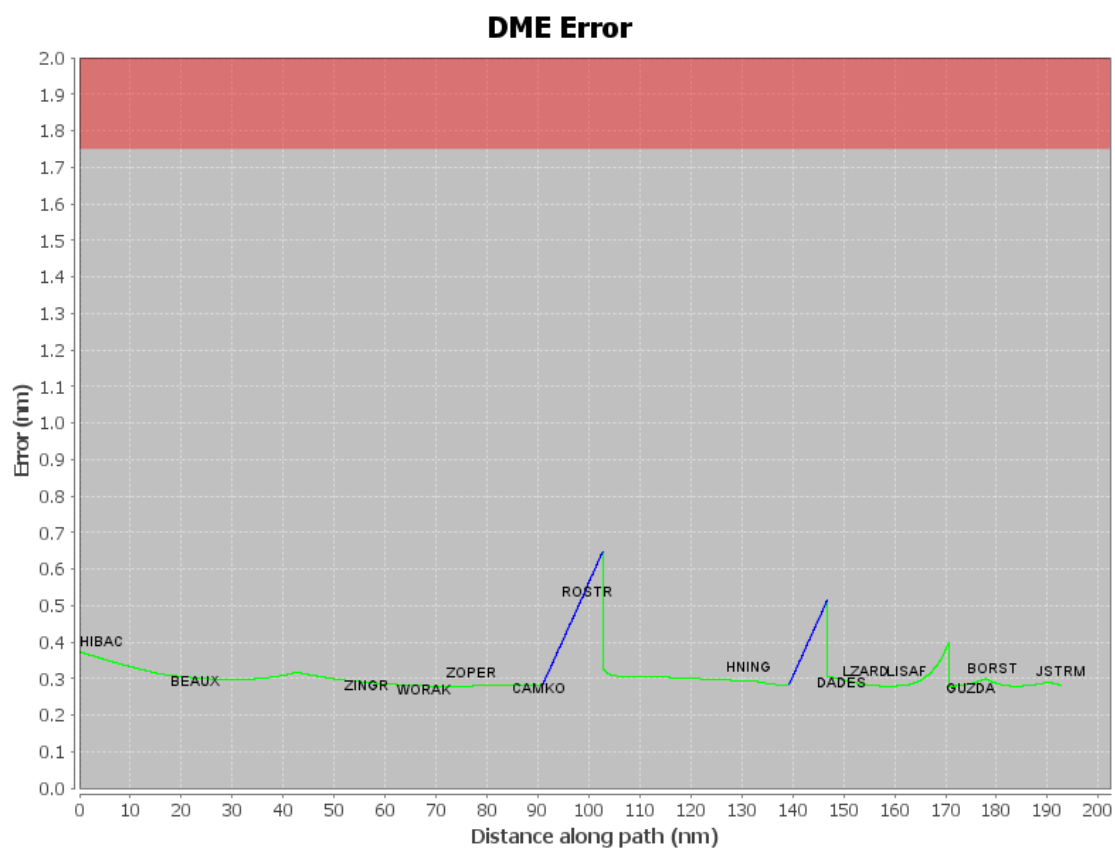
# File Name

None

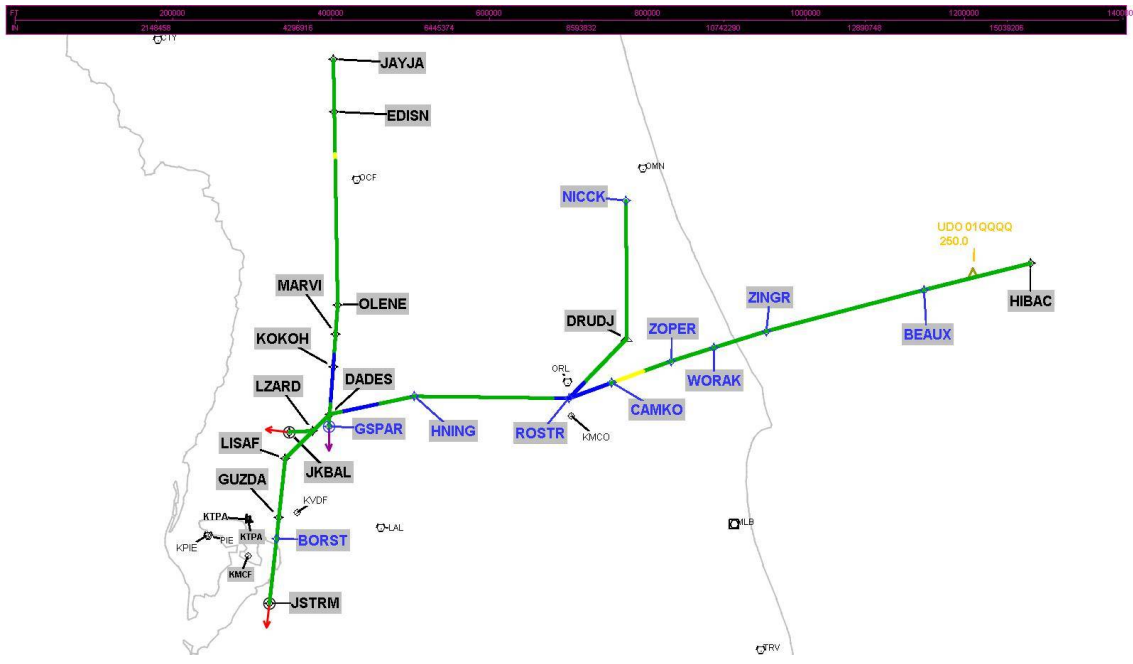
## User DMEs

#	Name	Lat/Lon	MAGVAR	Range	Elevation [ft]	Frequency	Replaces	Status
1	GNV FAA 704230-045 GNV [IFPA]	N29° 41' 31.613", W082° 16' 22.701"	4.0 W	40	160.8	116.2	GNV FAA 704230-045	
ESV:		Bearing [True]: 96.0° to 196.0° Bearing [Mag]: 100.0° to 200.0°				Arc Distance: Out to 92.0 NM Altitude: 6000.0 to 18000.0 ft		
2	OMN FAA 694106-23 OMN [IFPA]	N29° 18' 11.707", W081° 06' 45.706"	0.0 E	130	18.8	112.6	OMN FAA 694106-23	
ESV:		Bearing [True]: 113.0° to 187.0° Bearing [Mag]: 113.0° to 187.0°				Arc Distance: Out to 70.0 NM Altitude: 4000.0 to 18000.0 ft		
3	CTY FAA 704013-35 CTY [IFPA]	N29° 35' 56.403", W083° 02' 55.651"	2.0 W	40	55.8	112.0	CTY FAA 704013-35	
ESV:		Bearing [True]: 113.0° to 137.0° Bearing [Mag]: 115.0° to 139.0°				Arc Distance: Out to 64.0 NM Altitude: 8000.0 to 18000.0 ft		
4	OMN FAA 694106-18 OMN [IFPA]	N29° 18' 11.707", W081° 06' 45.706"	0.0 E	130	18.8	112.6	OMN FAA 694106-18	
ESV:		Bearing [True]: 215.0° to 315.0° Bearing [Mag]: 215.0° to 315.0°				Arc Distance: Out to 90.0 NM Altitude: 8000.0 to 18000.0 ft		

## DME DME Assessment Results for DADES7 path HIBAC\_JSTRM

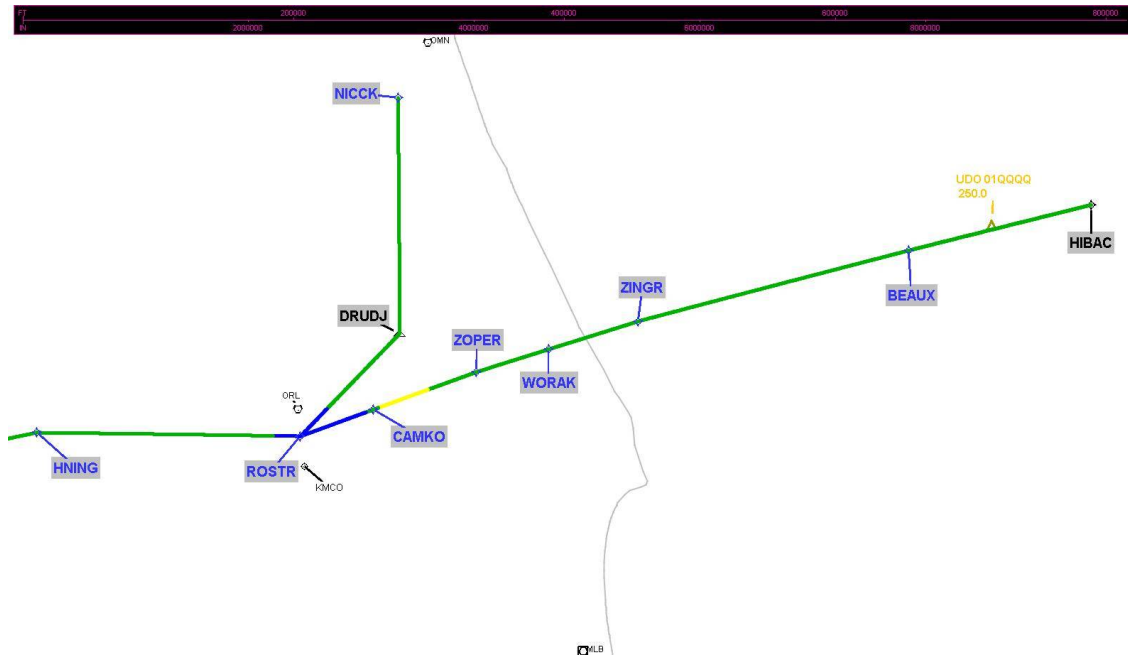


### Graphic Depiction 1



## DME DME Assessment Results for DADES7 path HIBAC\_JSTRM

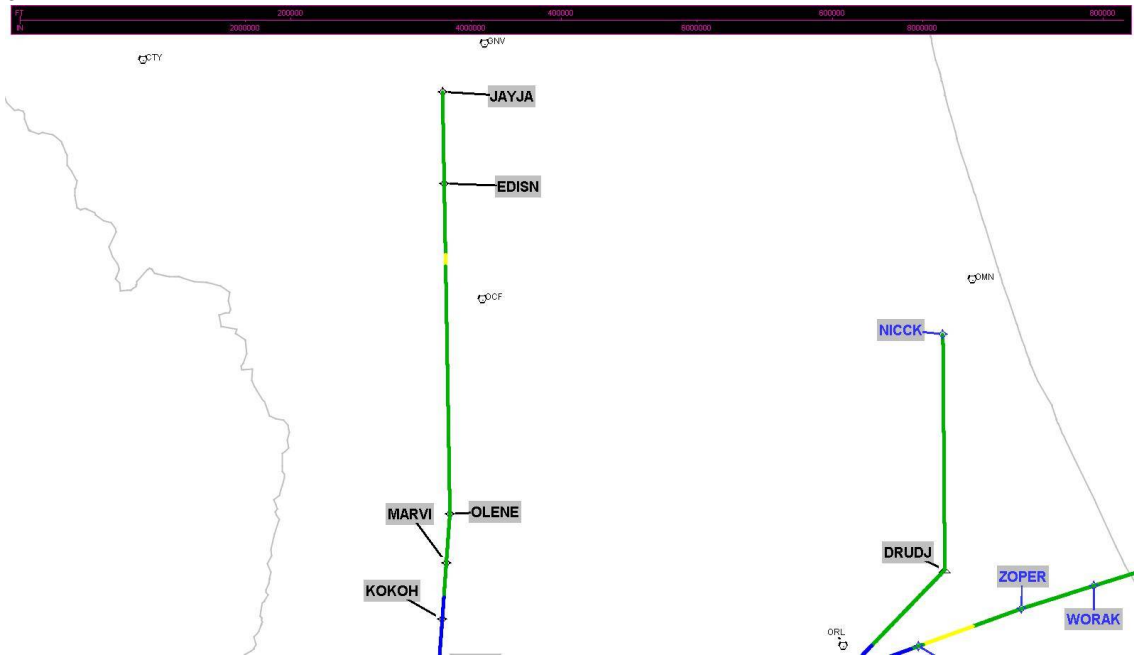
Graphic Depiction 2





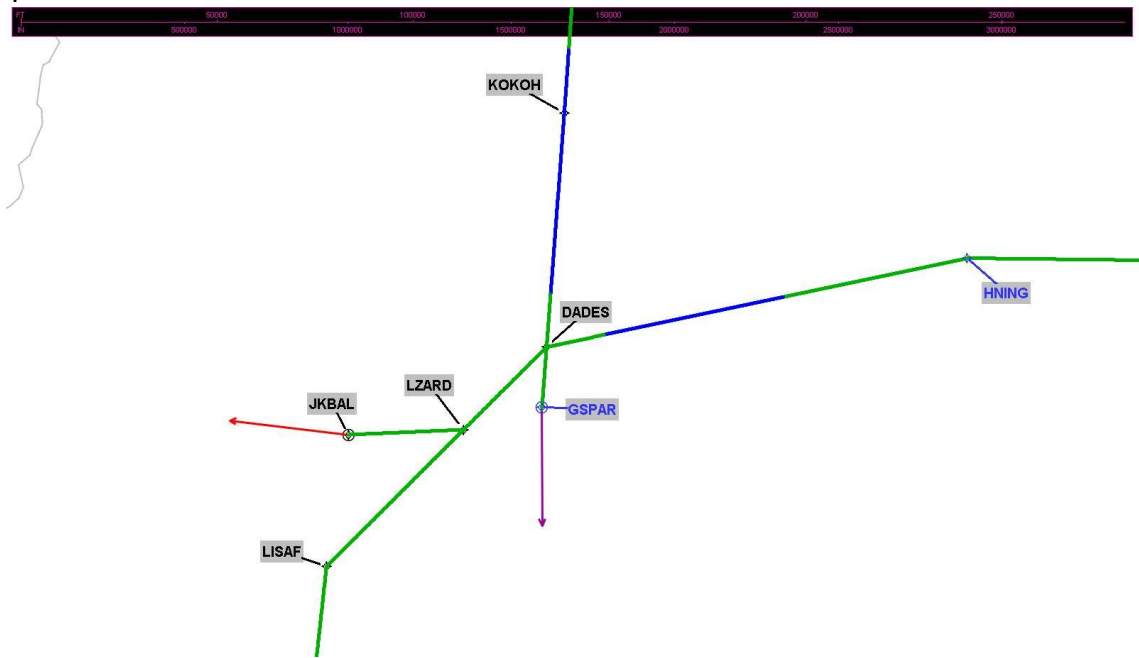
# DME DME Assessment Results for DADES7 path HIBAC\_JSTRM

Graphic Depiction 3

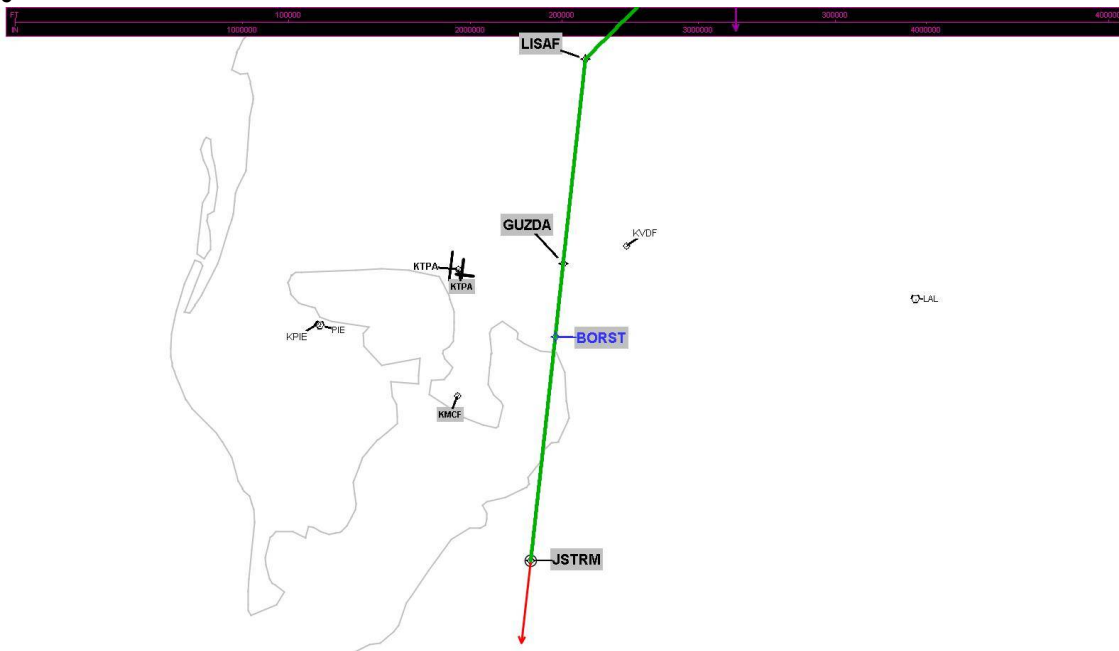


DME DME Assessment Results for DADES7 path HIBAC\_JSTRM

Graphic Depiction 4



### Graphic Depiction 5



## DME DME Assessment Results for DADES7 path JAYJA\_GSPAR

### Results Summary

Flyability:	Completed
DME/DME:	Completed - No Critical DMEs
Name:	Miles CTR Carpenter
Project File:	C:\Users\Miles CTR Carpenter\AppData\Local\Microsoft\Windows\I\NetCache\IE\R943PCZ1\DADES 20200805 EMAIL.tgs
Output File:	C:\Users\Miles CTR Carpenter\Desktop\KTPA STARs DME\KTPA DADES STAR DME\KTPA [IFPA] DADES7 20200811_0732 EDT\JAYJA_GSPAR\KTPA DADES7 RNAV STAR JAYJA GSPAR 20200811_0732 EDT.pdf
Procedure Name:	DADES7
Software: DmeDmePlugin:	6.1.0
Date/Time:	08/11/2020 07:32 EDT
Databases:	DTED 0max

### Failures

No Failures

### Warnings

No Warnings

### Notes For Flight Check

None

### Flight Plan

Name	Type	Lat/Lon	Altitude (ft)	VNAV Mode	Ground Speed (kts)	Turn Type	Leg Type
JAYJA	WP	N29° 35' 12.710", W082° 21' 31.980"	12000	VNAV	240	FLY_BY	TF
EDISN	WP	N29° 24' 14.670", W082° 20' 13.110"	12000	VNAV	240	FLY_BY	TF
OLENE	WP	N28° 44' 23.260", W082° 15' 28.850"	12000	VNAV	240	FLY_BY	TF
MARVI	WP	N28° 38' 21.830", W082° 15' 23.320"	10000	VNAV	240	FLY_BY	TF
KOKOH	WP	N28° 31' 34.740", W082° 15' 15.540"	6000	VNAV	240	FLY_BY	TF
DADES	WP	N28° 21' 45.620", W082° 15' 07.800"	4000	VNAV	260	FLY_BY	TF
GSPAR	WP	N28° 19' 14.629", W082° 15' 05.820"	4000	VNAV	260	FLY_OVER	TF

### Flyability

Flight Type:	RNAV_STAR
Selected Airport:	KTPA [IFPA]
Climb Gradient:	None assigned
Speeds:	200 Ground Speed to 11000 FT
	240 Ground Speed to 18000 FT
	260 Ground Speed to 24000 FT
	340 Ground Speed above 24000 FT
Descent During a Turn:	Allowed
VNAV Mode:	Flight Plan

## DME DME Assessment Results for DADES7 path JAYJA\_GSPAR

DME/DME	
RNP:	RNP 2
Flight Mode:	Manual
Line of Sight (DTED Level 0 Max):	Evaluated
Inertial Drift:	Enabled
Initial Drift:	0.558 NM
INS Drift Rate:	8.0 NM/Hour
Range Mode:	OSV
RNP Edges:	Evaluated
Min DME Range:	3.0 NM
DME Types:	DME, VOR-DME, VORTAC
DME Include Angles:	30 to 150
Critical DMEs:	Not Allowed
DoD Facilities:	Not included
Foreign Facilities:	Included
High DMEs:	Included
Low DMEs:	Included
Terminal DMEs:	Included
Flight Check DMEs:	Not selected
Higher Altitudes:	Not Evaluated
Near Maximum Altitude:	Not Evaluated
Automatic ESVs:	Not enabled
Disabled DMEs:	ZFP

DME/DME (Continued)										
DMEs Used										
#	Name	Lat/Lon	MAGVAR	Range	Type	Source	Critical	Status	Time	Distance
1	LAL	N27° 59' 10.253", W082° 00' 50.009"	1.0 E	130	H	IFPA	NO	Enabled	7.5 %	7.8 %
2	OMN	N29° 18' 11.707", W081° 06' 45.706"	0.0 E	130	H	IFPA	NO	Enabled	80.4 %	80.2 %
3	GNV	N29° 41' 31.613", W082° 16' 22.701"	4.0 W	40	L	IFPA	NO	Enabled	80.4 %	80.2 %
4	PIE	N27° 54' 27.952", W082° 41' 03.513"	5.0 W	130	H	IFPA	NO	Enabled	6 %	6.3 %
5	CTY	N29° 35' 56.403", W083° 02' 55.651"	2.0 W	40	L	IFPA	NO	Enabled	26.9 %	26.8 %
6	OCF	N29° 10' 38.918", W082° 13' 34.802"	0.0 E	40	L	IFPA	NO	Enabled	70.9 %	70.7 %
7	ZFP	N26° 33' 19.250", W078° 41' 52.250"	3.0 W	130	H	IFPA	NO	Disabled		

Flight Check DME Selection						
Distance [NM]	Selected DMEs					Alternate
0.0	CTY	OCF	OMN	GNV		
0.2	OMN	GNV	OCF			
17.8	OMN	GNV	CTY	OCF		
21.0	OMN	GNV	CTY			
28.1	OMN	GNV	CTY	OCF		
38.1	GNV	OMN	OCF			
59.8	OMN	LAL	GNV	OCF		
61.0						
71.3	PIE	LAL				

Inertial Drift Segments			
#	Start Location	End Location	Length [NM]
1	N28° 34' 18.375", W082° 15' 18.665"	N28° 24' 01.880", W082° 15' 09.588"	10.2562

## DME DME Assessment Results for DADES7 path JAYJA\_GSPAR

### Available DMEs by Waypoints

Waypoint Before	Waypoint After	DME List
JAYJA	EDISN	OMN, OCF, CTY, GNV
EDISN	OLENE	OMN, OCF, CTY, GNV
OLENE	MARVI	OMN, OCF, GNV
MARVI	KOKOH	OMN, OCF, LAL, GNV
KOKOH	DADES	LAL, PIE
DADES	GSPAR	LAL, PIE

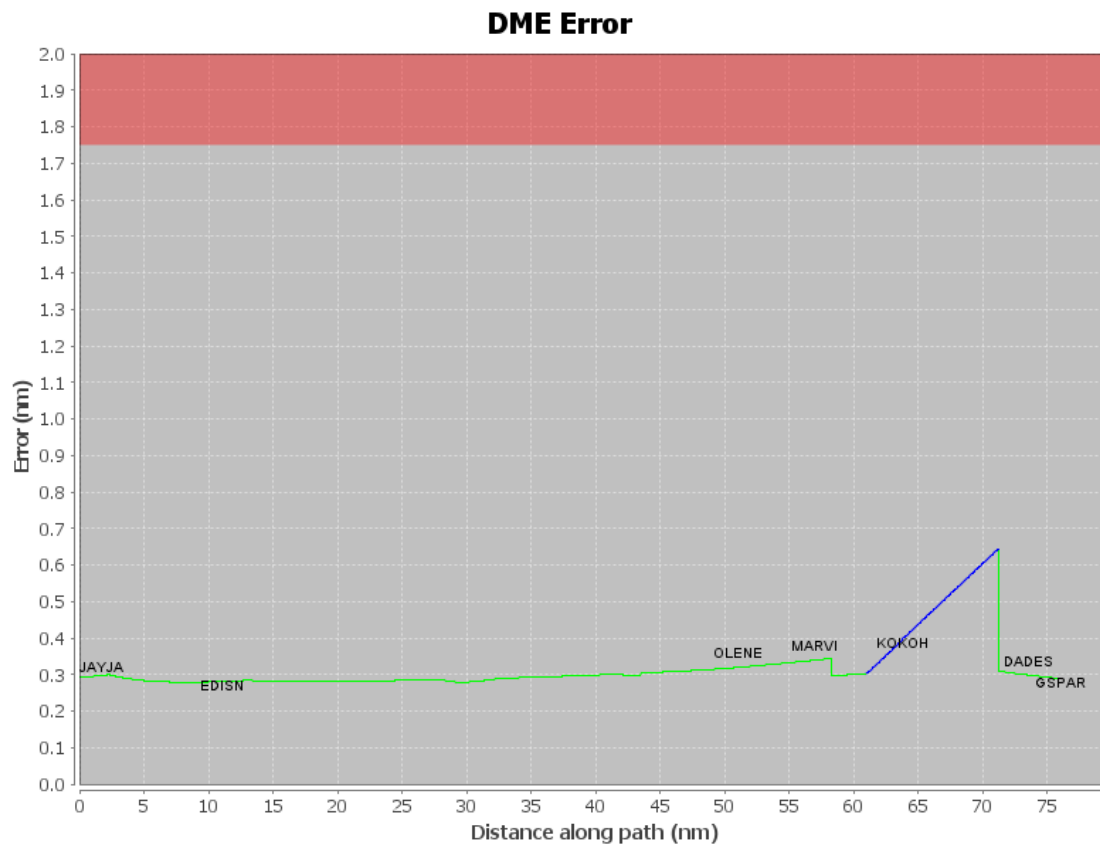
### User Data Files

#	File Name
None	

### User DMEs

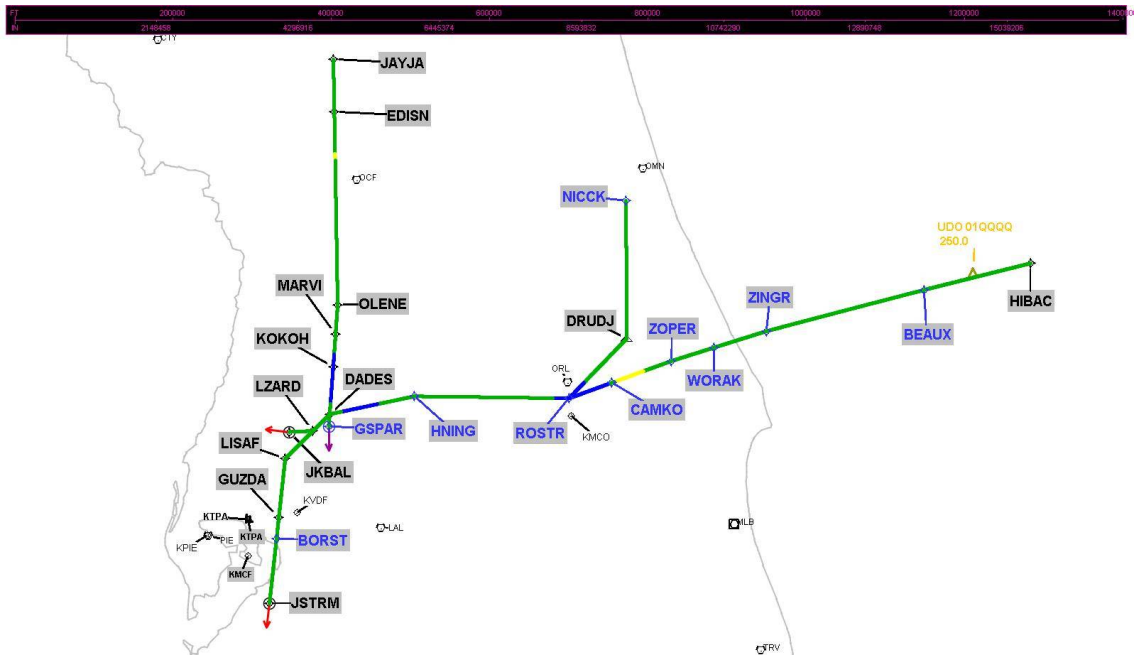
#	Name	Lat/Lon	MAGVAR	Range	Elevation [ft]	Frequency	Replaces	Status
1	GNV FAA 704230-045 GNV [IFPA]	N29° 41' 31.613" W082° 16' 22.701"	4.0 W	40	160.8	116.2	GNV FAA 704230-045	
ESV:		Bearing [True]: 96.0° to 196.0° Bearing [Mag]: 100.0° to 200.0°				Arc Distance: Out to 92.0 NM Altitude: 6000.0 to 18000.0 ft		
2	OMN FAA 694106-23 OMN [IFPA]	N29° 18' 11.707" W081° 06' 45.706"	0.0 E	130	18.8	112.6	OMN FAA 694106-23	
ESV:		Bearing [True]: 113.0° to 187.0° Bearing [Mag]: 113.0° to 187.0°				Arc Distance: Out to 70.0 NM Altitude: 4000.0 to 18000.0 ft		
3	CTY FAA 704013-35 CTY [IFPA]	N29° 35' 56.403" W083° 02' 55.651"	2.0 W	40	55.8	112.0	CTY FAA 704013-35	
ESV:		Bearing [True]: 113.0° to 137.0° Bearing [Mag]: 115.0° to 139.0°				Arc Distance: Out to 64.0 NM Altitude: 8000.0 to 18000.0 ft		
4	OMN FAA 694106-18 OMN [IFPA]	N29° 18' 11.707" W081° 06' 45.706"	0.0 E	130	18.8	112.6	OMN FAA 694106-18	
ESV:		Bearing [True]: 215.0° to 315.0° Bearing [Mag]: 215.0° to 315.0°				Arc Distance: Out to 90.0 NM Altitude: 8000.0 to 18000.0 ft		

## DME DME Assessment Results for DADES7 path JAYJA\_GSPAR



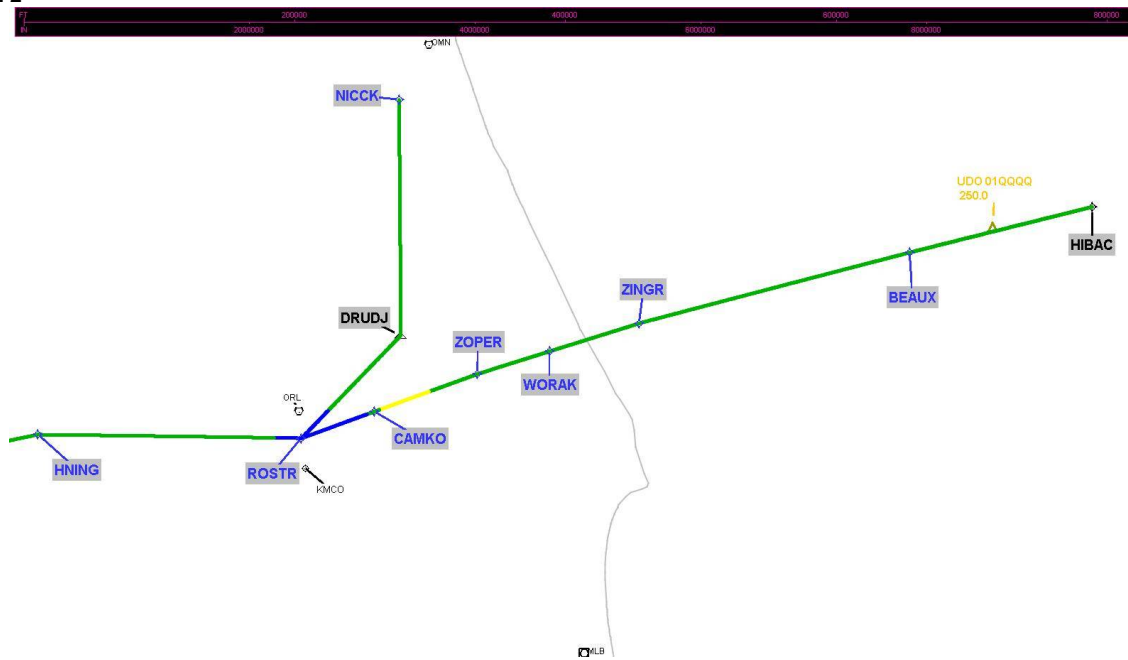
# DME DME Assessment Results for DADES7 path JAYJA\_GSPAR

Graphic Depiction 1



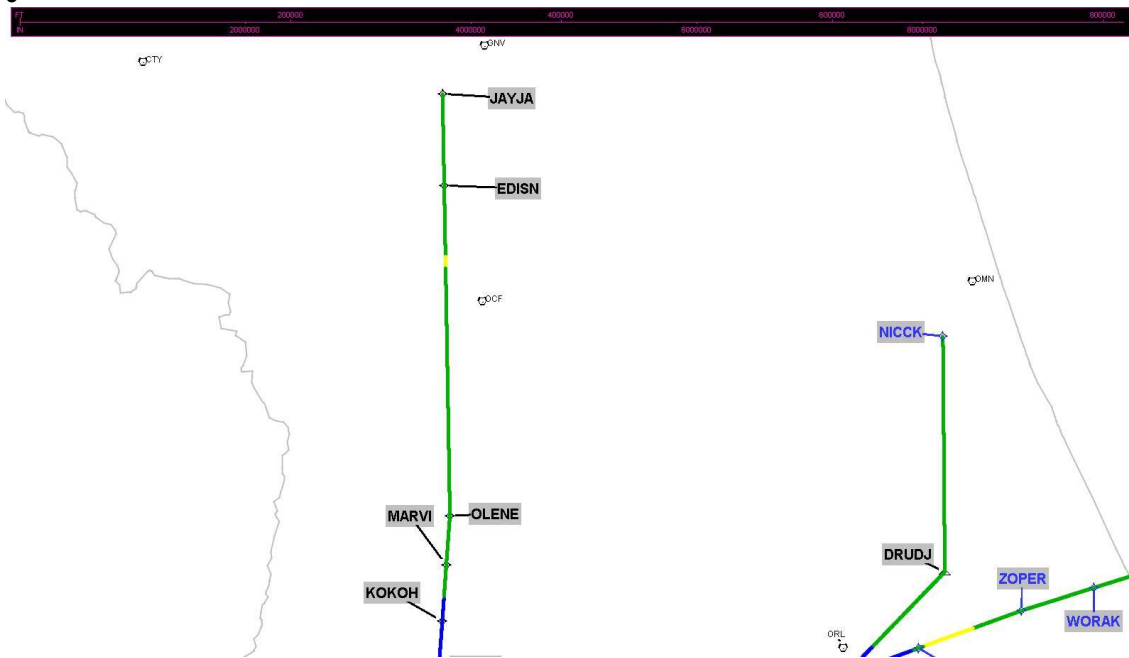


### Graphic Depiction 2



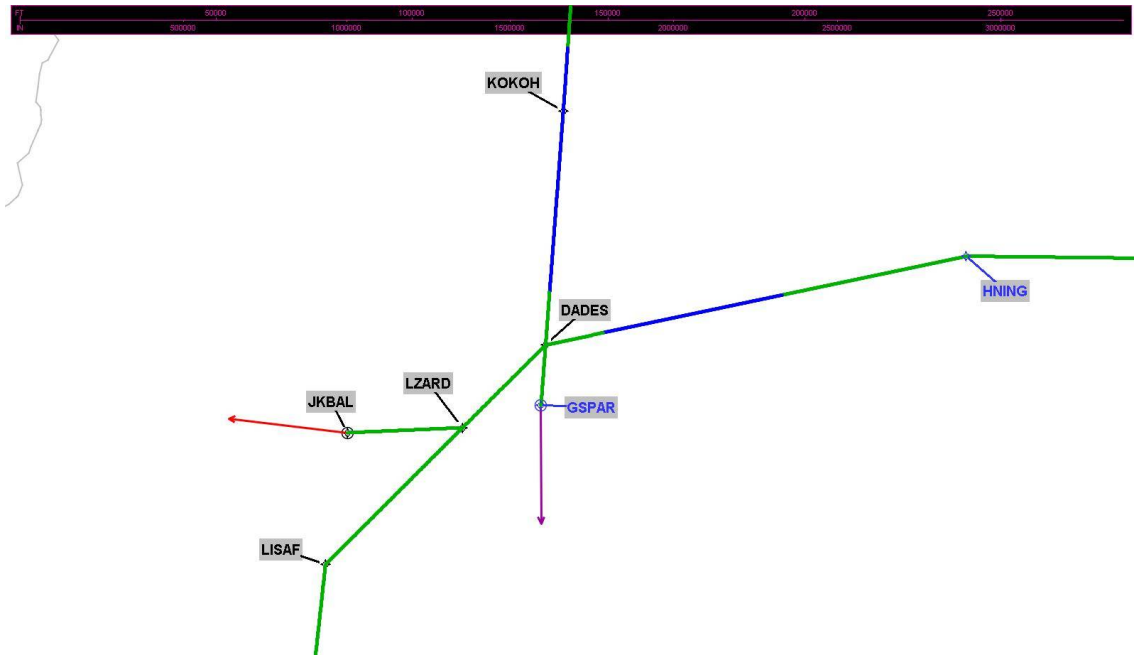
# DME DME Assessment Results for DADES7 path JAYJA\_GSPAR

Graphic Depiction 3

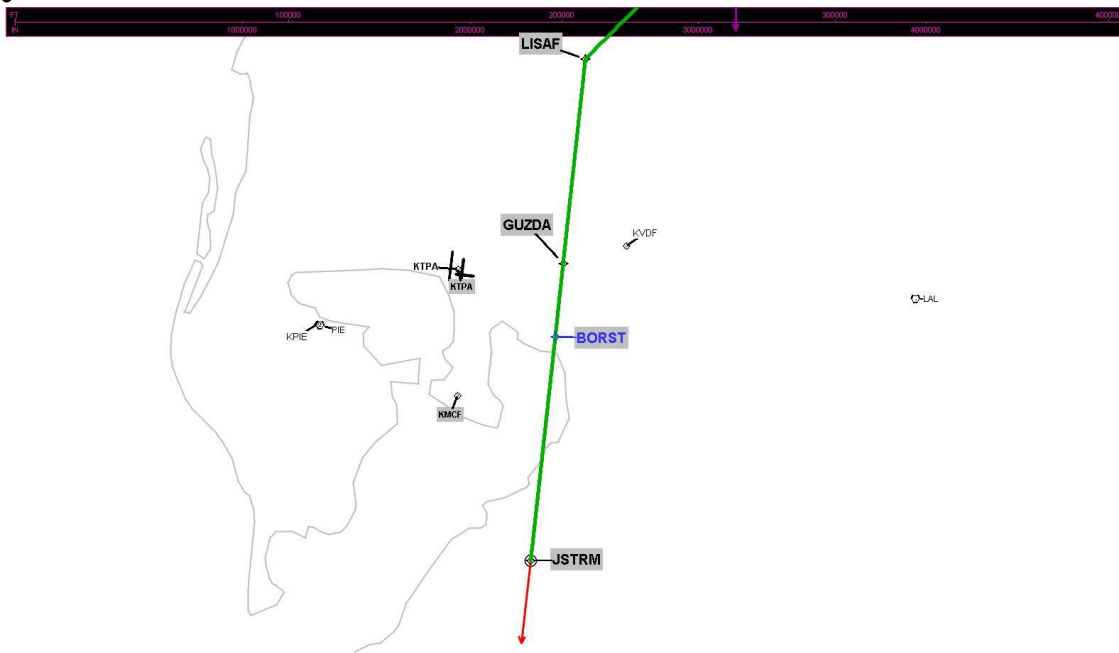


# DME DME Assessment Results for DADES7 path JAYJA\_GSPAR

Graphic Depiction 4



### Graphic Depiction 5



## DME DME Assessment Results for DADES7 path LZARD\_JKBAL

### Results Summary

Flyability:	Completed
DME/DME:	Completed - No Critical DMEs
Name:	Miles CTR Carpenter
Project File:	C:\Users\Miles CTR Carpenter\AppData\Local\Microsoft\Windows\INetCache\IE\R943PCZ1\DADES 20200805 EMAIL.tgs
Output File:	C:\Users\Miles CTR Carpenter\Desktop\KTPA STARs DME\KTPA DADES STAR DME\KTPA [IFPA] DADES7 20200811_0732 EDT\LZARD_JKBAL\KTPA DADES7 RNAV STAR LZARD JKBAL 20200811_0732 EDT.pdf
Procedure Name:	DADES7
Software: DmeDmePlugin:	6.1.0
Date/Time:	08/11/2020 07:32 EDT
Databases:	DTED 0max

### Failures

No Failures

### Warnings

No Warnings

### Notes For Flight Check

None

### Flight Plan

Name	Type	Lat/Lon	Altitude (ft)	VNAV Mode	Ground Speed (kts)	Turn Type	Leg Type
LZARD	WP	N28° 18' 00.550", W082° 18' 42.630"	4000	VNAV	210	FLY_BY	TF
JKBAL	WP	N28° 17' 22.880", W082° 24' 07.970"	4000	VNAV	260	FLY_OVER	TF

### Flyability

Flight Type:	RNAV_STAR
Selected Airport:	KTPA [IFPA]
Climb Gradient:	None assigned
Speeds:	200 Ground Speed to 11000 FT
	240 Ground Speed to 18000 FT
	260 Ground Speed to 24000 FT
	340 Ground Speed above 24000 FT
Descent During a Turn:	Allowed
VNAV Mode:	Flight Plan

## DME DME Assessment Results for DADES7 path LZARD\_JKBAL

DME/DME	
RNP:	RNP 2
Flight Mode:	Manual
Line of Sight (DTED Level 0 Max):	Evaluated
Inertial Drift:	Enabled
Initial Drift:	0.558 NM
INS Drift Rate:	8.0 NM/Hour
Range Mode:	OSV
RNP Edges:	Evaluated
Min DME Range:	3.0 NM
DME Types:	DME, VOR-DME, VORTAC
DME Include Angles:	30 to 150
Critical DMEs:	Not Allowed
DoD Facilities:	Not included
Foreign Facilities:	Included
High DMEs:	Included
Low DMEs:	Included
Terminal DMEs:	Included
Flight Check DMEs:	Not selected
Higher Altitudes:	Not Evaluated
Near Maximum Altitude:	Not Evaluated
Automatic ESVs:	Not enabled
Disabled DMEs:	ZFP

DME/DME (Continued)										
DMEs Used										
#	Name	Lat/Lon	MAGVAR	Range	Type	Source	Critical	Status	Time	Distance
1	LAL	N27° 59' 10.253", W082° 00' 50.009"	1.0 E	130	H	IFPA	NO	Enabled	100 %	100 %
2	PIE	N27° 54' 27.952", W082° 41' 03.513"	5.0 W	130	H	IFPA	NO	Enabled	100 %	100 %
3	ZFP	N26° 33' 19.250", W078° 41' 52.250"	3.0 W	130	H	IFPA	NO	Disabled		

Flight Check DME Selection						
Distance [NM]	Selected DMEs					Alternate
0.0	PIE	LAL				

Inertial Drift Segments			
#	Start Location	End Location	Length [NM]

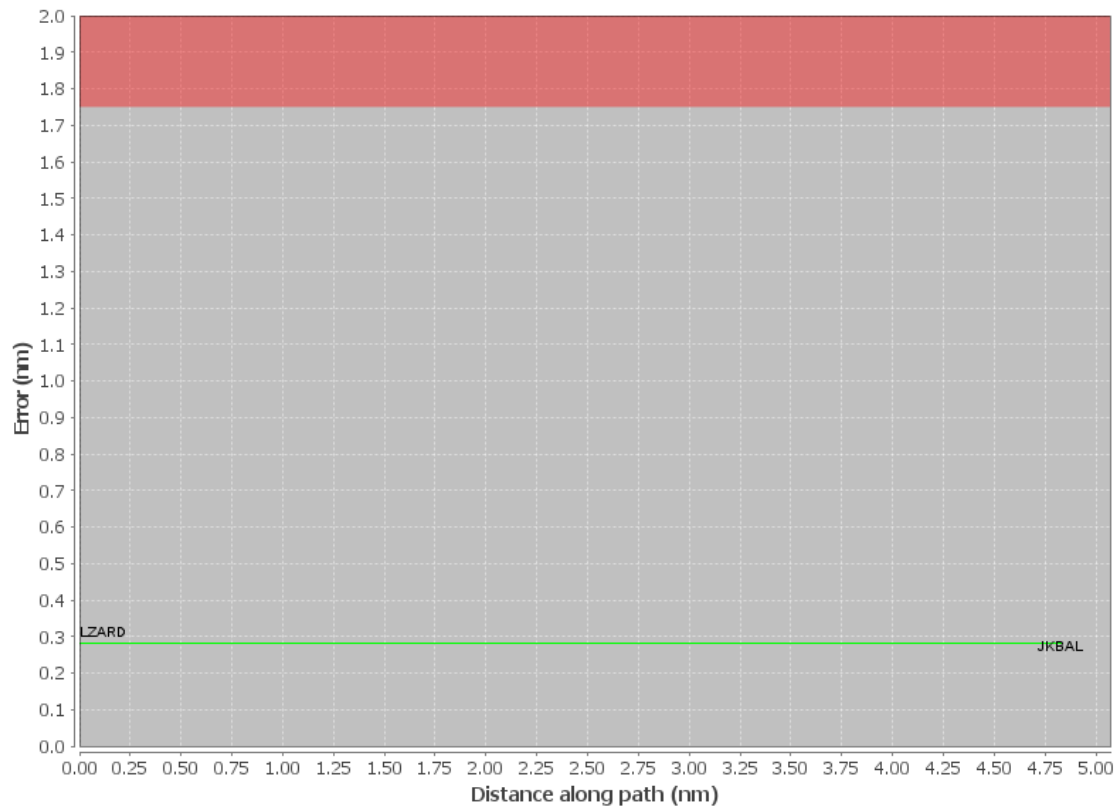
Available DMEs by Waypoints		
Waypoint Before	Waypoint After	DME List
LZARD	JKBAL	LAL, PIE

# DME DME Assessment Results for DADES7 path LZARD\_JKBAL

User Data Files								
#	File Name							
None								
User DMEs								
#	Name	Lat/Lon	MAGVAR	Range	Elevation [ft]	Frequency	Replaces	Status
1	GNV FAA 704230-045 GNV [IFPA]	N29° 41' 31.613", W082° 16' 22.701"	4.0 W	40	160.8	116.2	GNV FAA 704230-045	
ESV:		Bearing [True]: 96.0° to 196.0° Bearing [Mag]: 100.0° to 200.0°				Arc Distance: Out to 92.0 NM Altitude: 6000.0 to 18000.0 ft		
2	OMN FAA 694106-23 OMN [IFPA]	N29° 18' 11.707", W081° 06' 45.706"	0.0 E	130	18.8	112.6	OMN FAA 694106-23	
ESV:		Bearing [True]: 113.0° to 187.0° Bearing [Mag]: 113.0° to 187.0°				Arc Distance: Out to 70.0 NM Altitude: 4000.0 to 18000.0 ft		
3	CTY FAA 704013-35 CTY [IFPA]	N29° 35' 56.403", W083° 02' 55.651"	2.0 W	40	55.8	112.0	CTY FAA 704013-35	
ESV:		Bearing [True]: 113.0° to 137.0° Bearing [Mag]: 115.0° to 139.0°				Arc Distance: Out to 64.0 NM Altitude: 8000.0 to 18000.0 ft		
4	OMN FAA 694106-18 OMN [IFPA]	N29° 18' 11.707", W081° 06' 45.706"	0.0 E	130	18.8	112.6	OMN FAA 694106-18	
ESV:		Bearing [True]: 215.0° to 315.0° Bearing [Mag]: 215.0° to 315.0°				Arc Distance: Out to 90.0 NM Altitude: 8000.0 to 18000.0 ft		

# DME DME Assessment Results for DADES7 path LZARD\_JKBAL

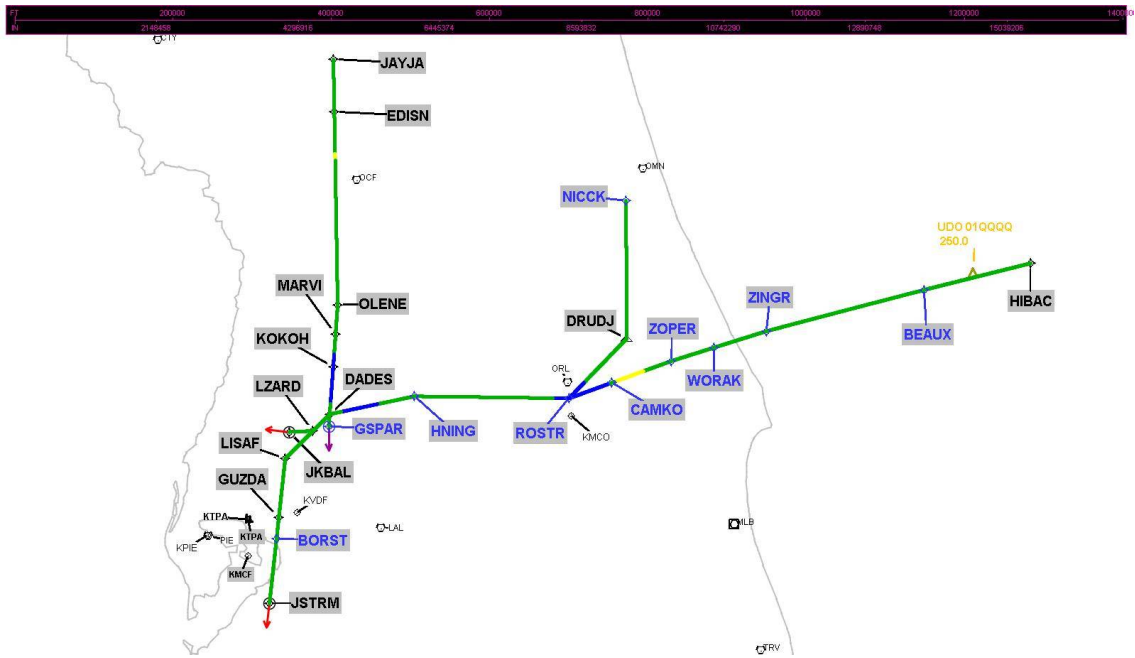
## DME Error





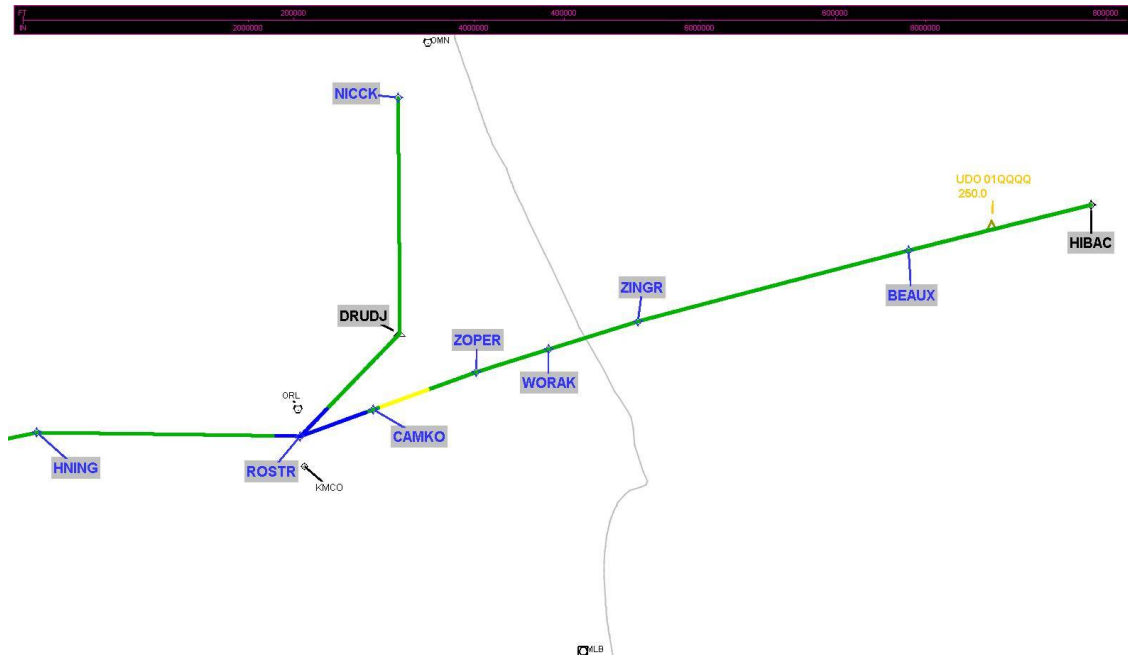
# DME DME Assessment Results for DADES7 path LZARD\_JKBAL

Graphic Depiction 1



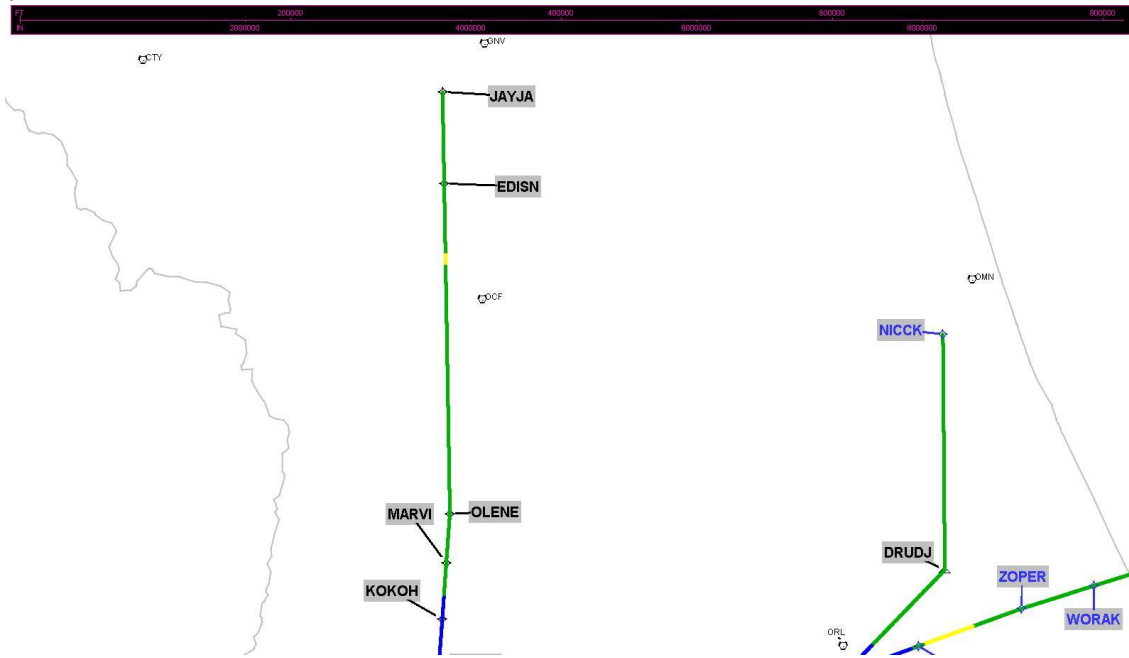
## DME DME Assessment Results for DADES7 path LZARD\_JKBAL

Graphic Depiction 2



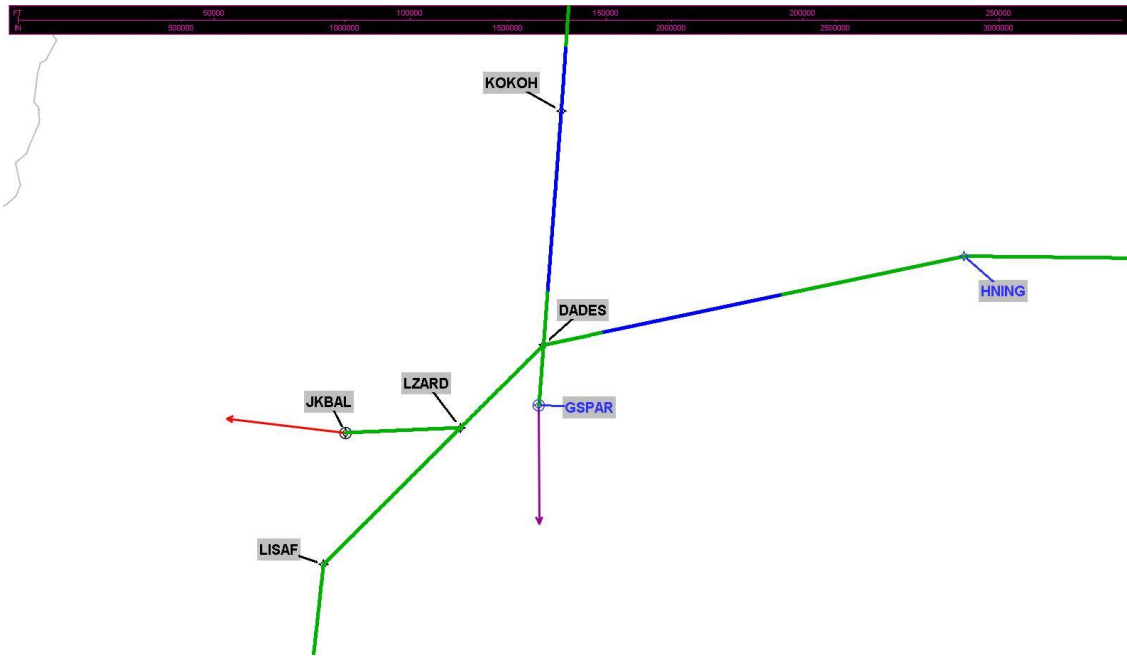
# DME DME Assessment Results for DADES7 path LZARD\_JKBAL

Graphic Depiction 3

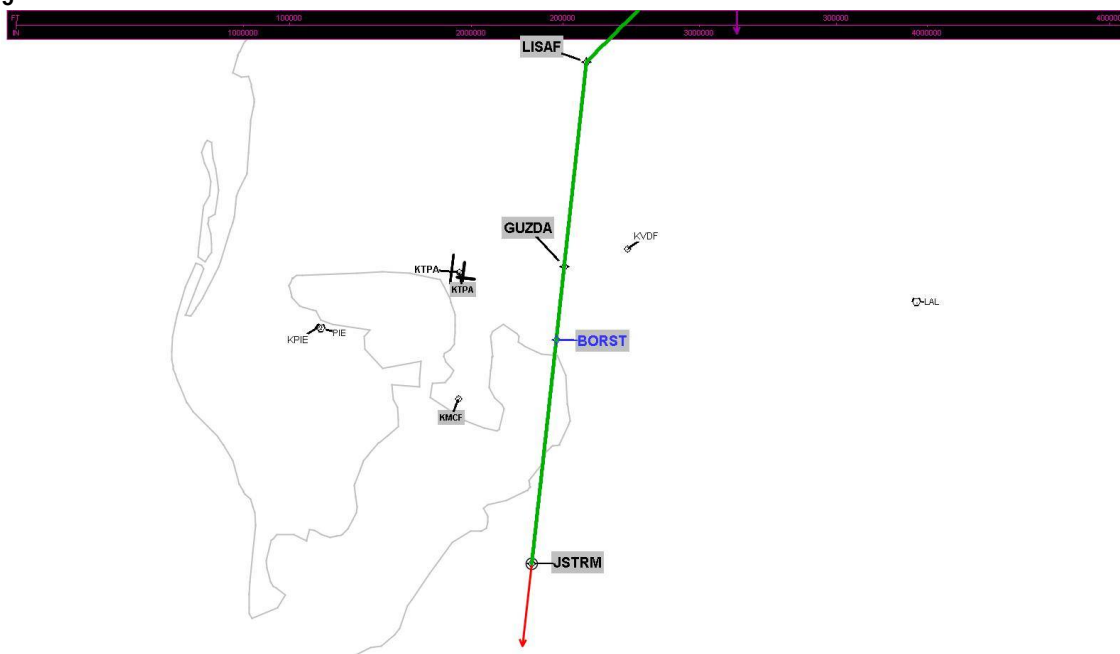


## DME DME Assessment Results for DADES7 path LZARD\_JKBAL

Graphic Depiction 4



### Graphic Depiction 5



## DME DME Assessment Results for DADES7 path NICCK\_ROSTR

### Results Summary

Flyability:	Completed
DME/DME:	Completed - No Critical DMEs
Name:	Miles CTR Carpenter
Project File:	C:\Users\Miles CTR Carpenter\AppData\Local\Microsoft\Windows\I\NetCache\IE\R943PCZ1\DADES 20200805 EMAIL.tgs
Output File:	C:\Users\Miles CTR Carpenter\Desktop\KTPA STARs DME\KTPA DADES STAR DME\KTPA [IFPA] DADES7 20200811_0732 EDT\NICCK_ROSTR\KTPA DADES7 RNAV STAR NICCK ROSTR 20200811_0732 EDT.pdf
Procedure Name:	DADES7
Software: DmeDmePlugin:	6.1.0
Date/Time:	08/11/2020 07:32 EDT
Databases:	DTED 0max

### Failures

No Failures

### Warnings

No Warnings

### Notes For Flight Check

None

### Flight Plan

Name	Type	Lat/Lon	Altitude (ft)	VNAV Mode	Ground Speed (kts)	Turn Type	Leg Type
NICCK	WP	N29° 11' 16.480", W081° 10' 10.160"	18000	VNAV	240	FLY_BY	TF
DRUDJ	WP	N28° 42' 49.750", W081° 07' 05.770"	16000	VNAV	240	FLY_BY	TF
ROSTR	WP	N28° 29' 20.920", W081° 19' 27.980"	13000	VNAV	260	FLY_BY	TF

### Flyability

Flight Type:	RNAV_STAR
Selected Airport:	KTPA [IFPA]
Climb Gradient:	None assigned
Speeds:	200 Ground Speed to 11000 FT
	240 Ground Speed to 18000 FT
	260 Ground Speed to 24000 FT
	340 Ground Speed above 24000 FT
Descent During a Turn:	Allowed
VNAV Mode:	Flight Plan

## DME DME Assessment Results for DADES7 path NICCK\_ROSTR

DME/DME	
RNP:	RNP 2
Flight Mode:	Manual
Line of Sight (DTED Level 0 Max):	Evaluated
Inertial Drift:	Enabled
Initial Drift:	0.558 NM
INS Drift Rate:	8.0 NM/Hour
Range Mode:	OSV
RNP Edges:	Evaluated
Min DME Range:	3.0 NM
DME Types:	DME, VOR-DME, VORTAC
DME Include Angles:	30 to 150
Critical DMEs:	Not Allowed
DoD Facilities:	Not included
Foreign Facilities:	Included
High DMEs:	Included
Low DMEs:	Included
Terminal DMEs:	Included
Flight Check DMEs:	Not selected
Higher Altitudes:	Not Evaluated
Near Maximum Altitude:	Not Evaluated
Automatic ESVs:	Not enabled
Disabled DMEs:	ZFP

DME/DME (Continued)										
DMEs Used										
#	Name	Lat/Lon	MAGVAR	Range	Type	Source	Critical	Status	Time	Distance
1	LAL	N27° 59' 10.253", W082° 00' 50.009"	1.0 E	130	H	IFPA	NO	Enabled	68.1 %	68.1 %
2	CRG	N30° 20' 19.965", W081° 30' 35.738"	3.0 W	130	H	IFPA	NO	Enabled	61.8 %	61.8 %
3	TRV	N27° 40' 42.326", W080° 29' 23.012"	7.0 W	130	H	IFPA	NO	Enabled	68.5 %	68.5 %
4	OMN	N29° 18' 11.707", W081° 06' 45.706"	0.0 E	130	H	IFPA	NO	Enabled	22.7 %	22.7 %
5	PIE	N27° 54' 27.952", W082° 41' 03.513"	5.0 W	130	H	IFPA	NO	Enabled	9 %	9 %
6	GNV	N29° 41' 31.613", W082° 16' 22.701"	4.0 W	40	L	IFPA	NO	Enabled	21.1 %	21 %
7	ORL	N28° 32' 33.802", W081° 20' 06.053"	0.0 E	130	H	IFPA	NO	Enabled	89.8 %	89.7 %
8	ZFP	N26° 33' 19.250", W078° 41' 52.250"	3.0 W	130	H	IFPA	NO	Disabled		

Flight Check DME Selection						
Distance [NM]	Selected DMEs					Alternate
0.0	LAL	CRG	TRV	ORL		
21.0	TRV	LAL	ORL	CRG	OMN	
28.4	TRV	ORL	LAL	PIE	OMN	
31.2	TRV	ORL	PIE	OMN		
31.4	GNV	ORL	PIE	OMN		
31.5	GNV	ORL				
41.1						

Inertial Drift Segments			
#	Start Location	End Location	Length [NM]
1	N28° 32' 58.795", W081° 16' 08.465"	N28° 29' 20.920", W081° 19' 27.980"	4.658

# DME DME Assessment Results for DADES7 path NICCK\_ROSTR

## Available DMEs by Waypoints

Waypoint Before	Waypoint After	DME List
NICCK	DRUDJ	OMN, LAL, ORL, TRV, CRG, PIE
DRUDJ	ROSTR	OMN, LAL, ORL, TRV, PIE, GNV

## User Data Files

# File Name

None

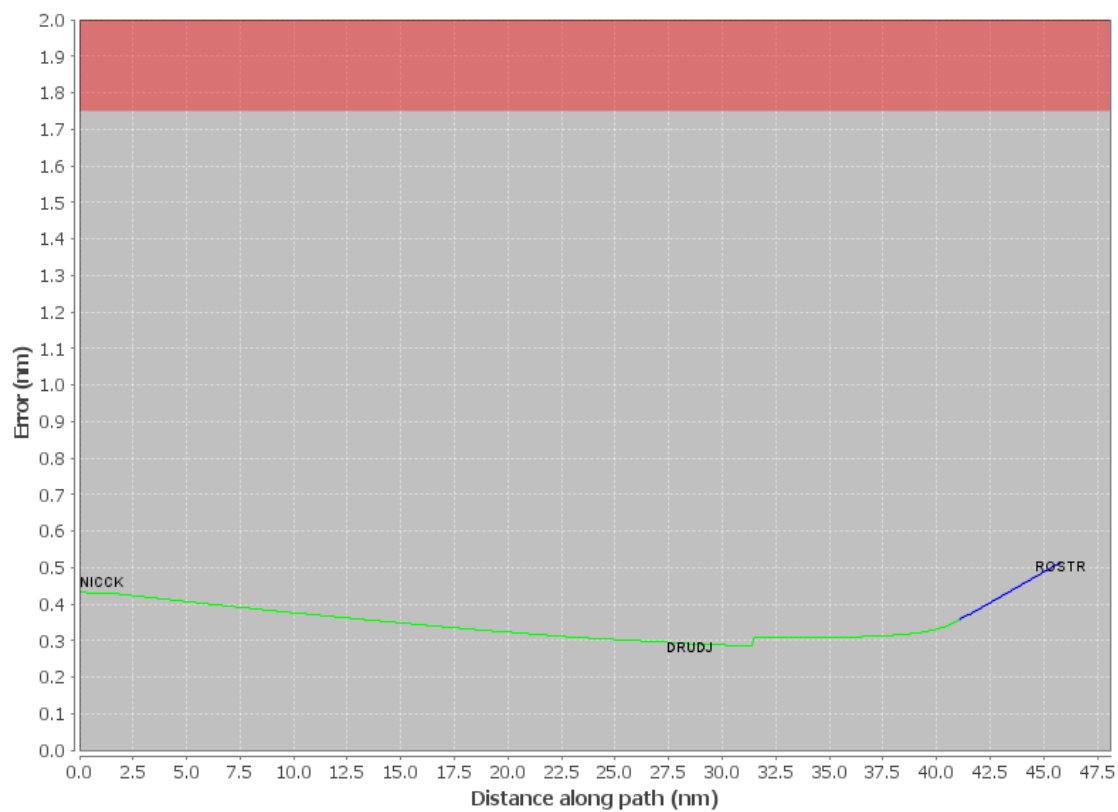
## User DMEs

#	Name	Lat/Lon	MAGVAR	Range	Elevation [ft]	Frequency	Replaces	Status
1	GNV FAA 704230-045 GNV [IFPA]	N29° 41' 31.613" W082° 16' 22.701"	4.0 W	40	160.8	116.2	GNV FAA 704230-045	
ESV:		Bearing [True]: 96.0° to 196.0° Bearing [Mag]: 100.0° to 200.0°				Arc Distance: Out to 92.0 NM Altitude: 6000.0 to 18000.0 ft		
2	OMN FAA 694106-23 OMN [IFPA]	N29° 18' 11.707" W081° 06' 45.706"	0.0 E	130	18.8	112.6	OMN FAA 694106-23	
ESV:		Bearing [True]: 113.0° to 187.0° Bearing [Mag]: 113.0° to 187.0°				Arc Distance: Out to 70.0 NM Altitude: 4000.0 to 18000.0 ft		
3	CTY FAA 704013-35 CTY [IFPA]	N29° 35' 56.403" W083° 02' 55.651"	2.0 W	40	55.8	112.0	CTY FAA 704013-35	
ESV:		Bearing [True]: 113.0° to 137.0° Bearing [Mag]: 115.0° to 139.0°				Arc Distance: Out to 64.0 NM Altitude: 8000.0 to 18000.0 ft		
4	OMN FAA 694106-18 OMN [IFPA]	N29° 18' 11.707" W081° 06' 45.706"	0.0 E	130	18.8	112.6	OMN FAA 694106-18	
ESV:		Bearing [True]: 215.0° to 315.0° Bearing [Mag]: 215.0° to 315.0°				Arc Distance: Out to 90.0 NM Altitude: 8000.0 to 18000.0 ft		



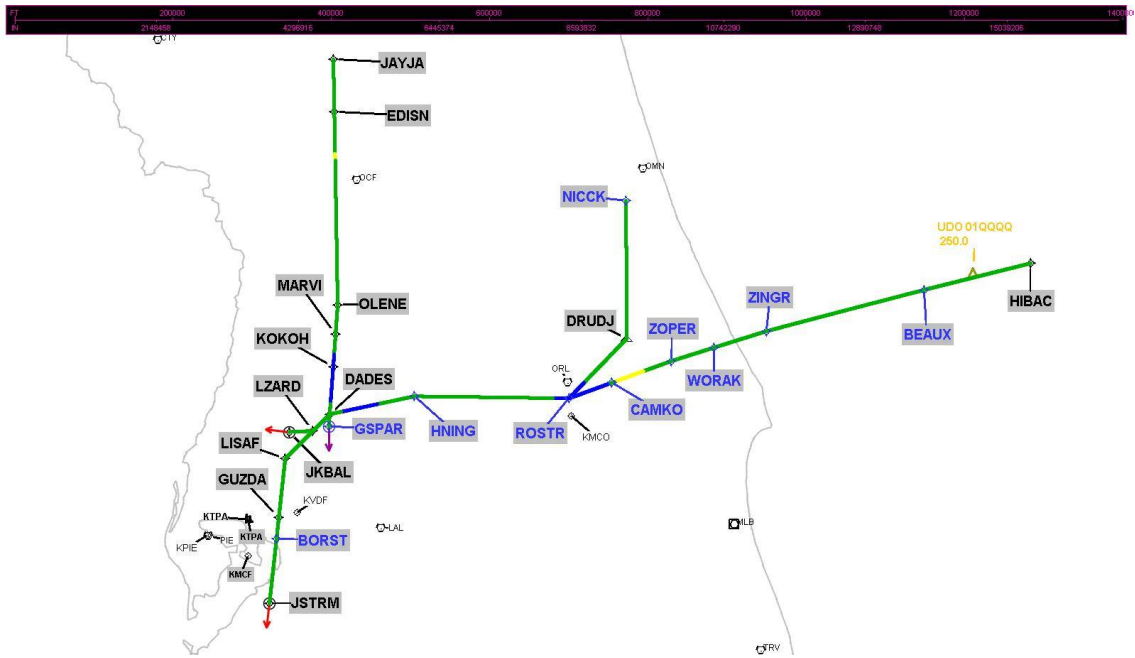
# DME DME Assessment Results for DADES7 path NICCK\_ROSTR

## DME Error



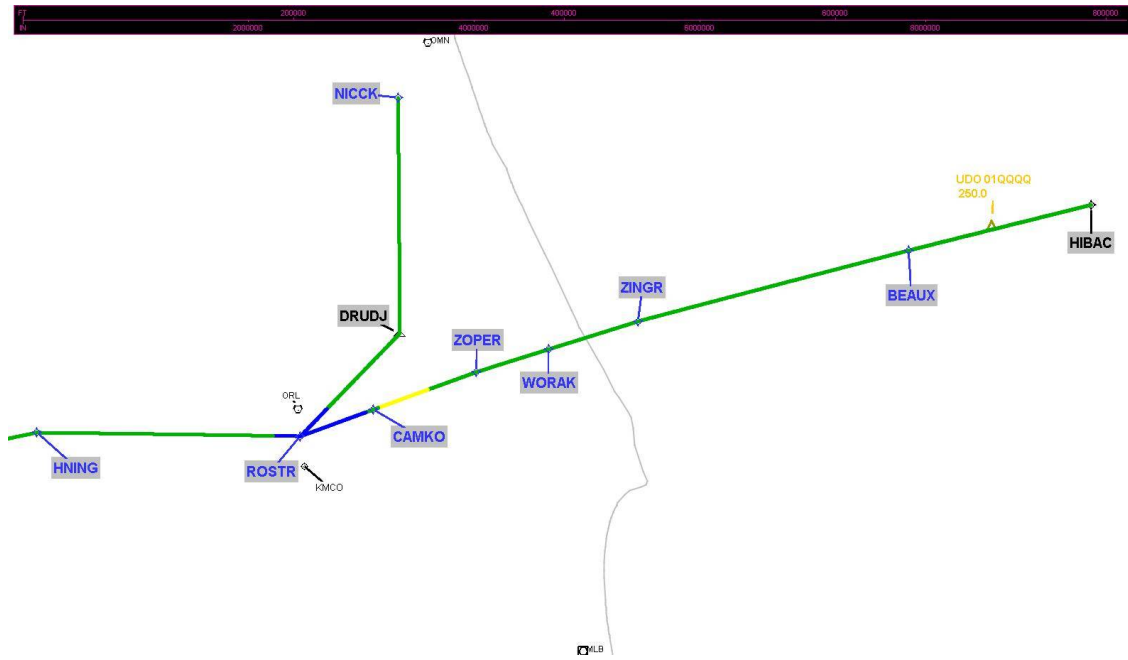
# DME DME Assessment Results for DADES7 path NICCK\_ROSTR

Graphic Depiction 1



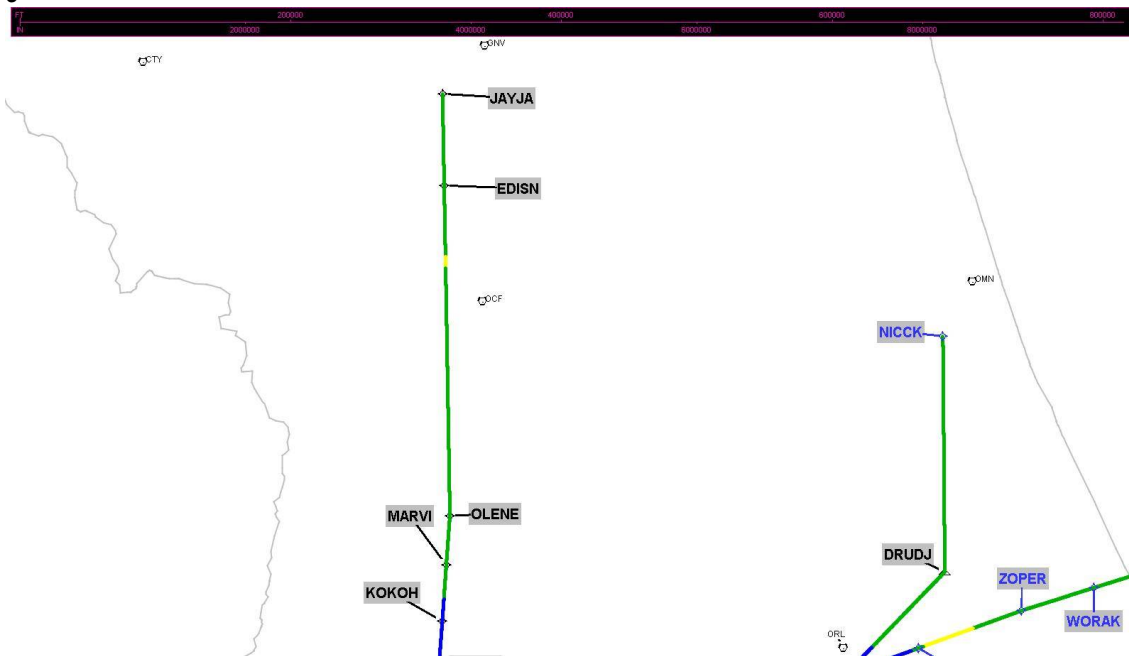
## DME DME Assessment Results for DADES7 path NICCK\_ROSTR

Graphic Depiction 2



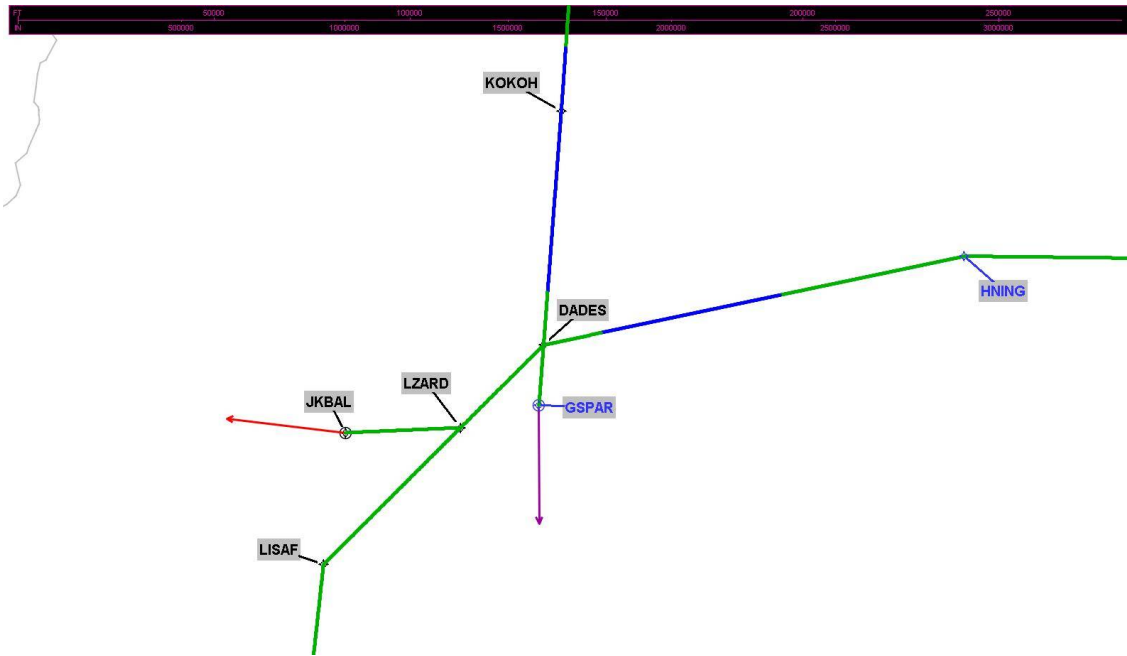
# DME DME Assessment Results for DADES7 path NICCK\_ROSTR

Graphic Depiction 3



# DME DME Assessment Results for DADES7 path NICCK\_ROSTR

Graphic Depiction 4



# DME DME Assessment Results for DADES7 path NICCK\_ROSTR

Graphic Depiction 5

