

Flight Procedures Cover Page	Task Action: FLIGHT CHECK	Task Type: IAP	Estimated Chart Date: 11/30/2023	APWS Task ID: 6862DEDCAO1F4DD8AFF213B3A6BA79B8	APWS Project ID: D25750D86B7B4B088567D461D523B13A
Procedure: RNAV (GPS) RWY 24 AMDT 0D		Enroute: NO	Specialist: Dumar, Ralph		Agreement Number:
Airport ID: KPYM			Airport City: PLYMOUTH		State: MA
Facility ID:	Facility Type:	Flight Inspection Remark Type: New FC Slot			
<div>Procedure Comments: ABBREVIATED AMENDMENT</div> <div>KPYM: PENDING AIRPORT DATA USED.</div> <div>REMARKS: LPV, LNAV/VNAV REMOVED - VGS PENETRATIONS, VDP REMOVED - 20:1 PENETRATIONS, CIRCLING CAT C MDA/HAA INCREASED, NEW CONTROLLING OBSTACLES, T-NOTAM CANCELING PROJECT (FDC 3/5010). CONTACT RAKE MCGRAW (405) 954-8711.</div> <div><div>QUALITY 33 CHECKED</div><div>QUALITY 34 CHECKED</div></div>					

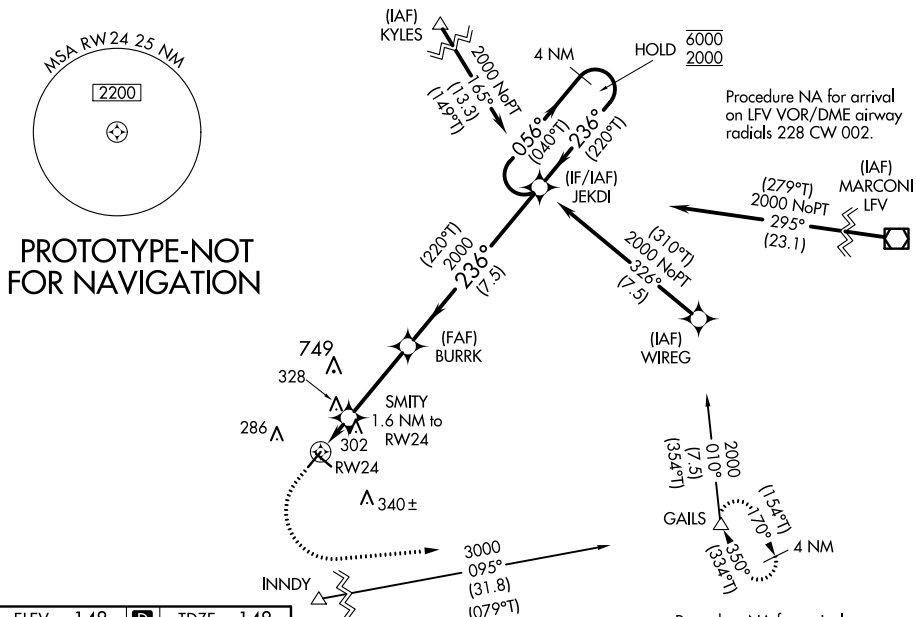
FIPC BASIC FORM							
PROCEDURE: RNAV (GPS) RWY 24 AMDT 0D			AIRPORT NAME: PLYMOUTH MUNI		AIRPORT ID: KPYM	SPECIAL CONTROL NO: YG-08-213-23	
FAC ID: KPYM24		CITY: PLYMOUTH			ST: MA	ORIG CHART DATE: 11/30/2023	
DFL TYPE: PROC/G	THIRD PARTY: <input type="checkbox"/> YES	EST. TIME ON SITE: 0.5	REIMB. NUMBER:		PTS TASK ID: 6862DEDCA01F4DD8AFF213B3A6BA79B8		
PREFLIGHT NOTES							
REVIEWER:					DATE:		
COMMENTS:					CHECK ONE:		
					<input type="checkbox"/> FLT CK REQ <input type="checkbox"/> NFCR <input type="checkbox"/> REJECT		
							YES
					CPV COMPLETE?		X
PROCEDURE RESULTS							
INSPECTION DATE: 09/22/2023		CREW #: VN137	N #: N73	INSTRUMENT PROCEDURE STATUS: <input checked="" type="checkbox"/> SAT <input type="checkbox"/> SAT W/CHANGES <input type="checkbox"/> UNSAT		ARINC CODING: <input checked="" type="checkbox"/> SAT <input type="checkbox"/> SAT/GOLD <input type="checkbox"/> UNSAT	
FLIGHT INSPECTOR SIGNATURE: bob s pressler @ 09/22/2023 11:35			PRINTED NAME: PRESSLER, ROBERT STEPHEN				NOTAM INITIATED? <input type="checkbox"/> YES <input checked="" type="checkbox"/> NO
FLIGHT INSPECTOR REMARKS: SAT							
IN-FLIGHT OBSTACLE REPORT							
OBSTRUCTION ID #:	COORDINATES OR LOCATION:		GNSS ALTITUDE (MSL):		BAROMETRIC ALTITUDE (MSL):		HEIGHT ABOVE GROUND LEVEL:

RNAV (GPS) RWY 24
PLYMOUTH MUNI (PYM)

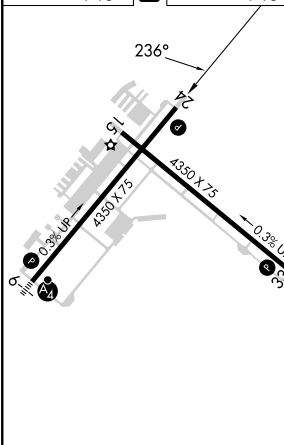
T Rwy 24 helicopter visibility reduction below 1 SM NA.
A Straight-in Rwy 24 NA at night. Circling Rwy 15, 24 NA at night.

MISSED APPROACH: Climb to 640 then climbing left turn to 2000 direct GALS and hold.

122.9 L



ELEV	148	D	TDZE	148
------	-----	----------	------	-----



REIL Rwy 24 **L**
MIRL Rwys 6-24 and 15-33 **L**

Diagram illustrating the 4 NM Holding Pattern for the RW24 approach. The pattern is a racetrack shape. The inbound leg is from the right, heading 236° (220°T) for 7.5 NM to the 2000 ft MSL fix. The outbound leg is heading 056° (040°T) for 3.4 NM to the 2000 ft MSL fix. The turn is 236° (220°T). The holding pattern is 4 NM. The diagram also shows the RW24 approach with a 3.40° angle and TCH 60. The holding pattern is labeled '4 NM Holding Pattern'.

CATEGORY	A	B	C	D
RNAV MDA	580-1	432 (500-1)	580-1¼ 432 (500-1¼)	NA
CIRCLING	620-1 472 (500-1)	640-1 492 (500-1)	760-1¼ 612 (700-1¼)	NA

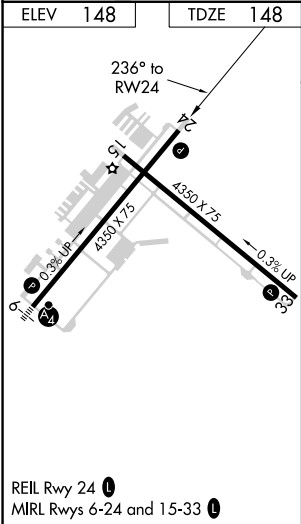
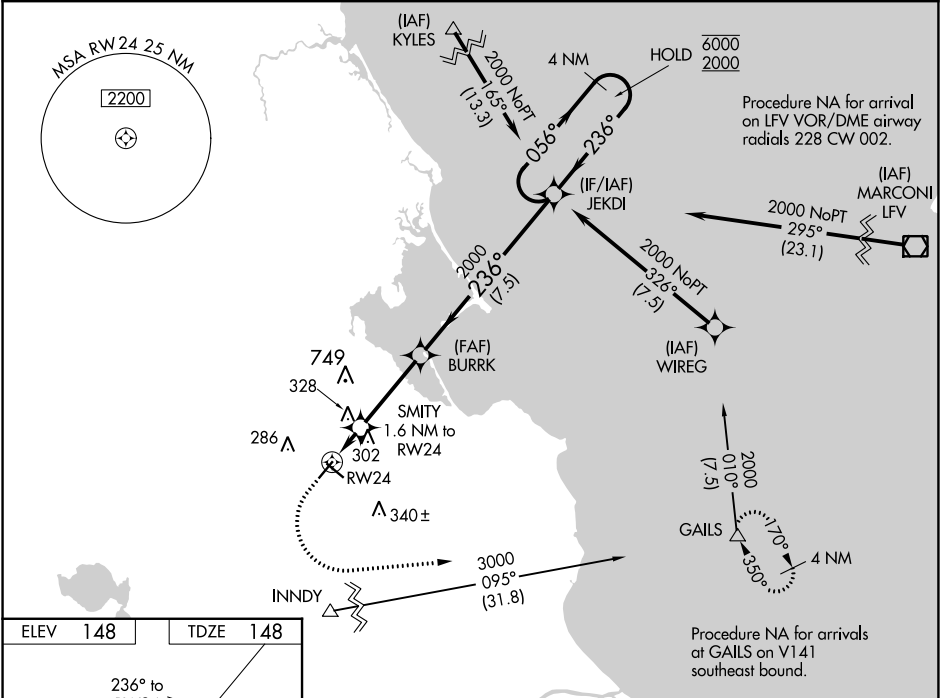
WAAS CH 42922 W24A	APP CRS 236°	Rwy Idg TDZE 148 Apt Elev 148
--	------------------------	---



RNAV (GPS) RWY 24
PLYMOUTH MUNI (PYM)

RNP APCH. Circling Rwy 15 NA at night. Rwy 24 helicopter visibility reduction below ¾ SM NA. For uncompensated Baro-VNAV systems, LNAV/VNAV NA below -17°C (2°F) or above 54°C (130°F).	MISSED APPROACH: Climb to 640 then climbing left turn to 2000 direct GAILS and hold.
--	--

ASOS 135.625	BOSTON APP CON * 118.2 284.6	CLNC DEL 127.75	UNICOM 122.725 (CTAF)	122.9
------------------------	--	---------------------------	---------------------------------	--------------



640	2000	GAILS	VGSI and RNAV glidepath not coincident (VGSI Angle 4.00/TCH 40).	4 NM Holding Pattern
*LNAV only.				
*1 NM to RWY 24				
SMITY 1.6 NM to RWY 24				
BURRK 2000				
JEKDI				
SMITY 2000				
RWY 24 780*				
1 NM 0.6 NM 3.4 NM 7.5 NM				
CATEGORY	A	B	C	D
LPV DA	446-1 298 (300-1)			NA
LNAV/VNAV DA	445-1 297 (300-1)			NA
LNAV MDA	580-1	432 (500-1)	580-1¼ 432 (500-1¼)	NA
CIRCLING	620-1 472 (500-1)	640-1 492 (500-1)	740-1½ 592 (600-1½)	NA

KPYM
Plymouth Muni
Plymouth, MA
RNAV (GPS) Rwy 24, Orig-D
1:100,000

LNAV Stepdown
POLE (328)
25-049444

LNAV Final
Circling CAT C
TOWER (456)
25-000199

Missed Lvl Sfc
AAO (600)

Circling CAT A
TREE (319)

Circling CAT B
TRNSMSSN_LINE (331)
25-053518

