

Flight Procedures Cover Page	Task Action: FLIGHT CHECK	Task Type: IAP	Estimated Chart Date: 11/27/2025	APWS Task ID: 67017DDAB1E6410AB9AE76D6E1572F58	APWS Project ID: 57BF7E49DA214FB4BC657A95CE7B6330
Procedure: RNAV (GPS) RWY 36 AMDT 4		Enroute: NO	Specialist: Purnell, Troy		Agreement Number:
Airport ID: KFSO			Airport City: HIGHGATE		State: VT
Facility ID:	Facility Type:	Flight Inspection Remark Type: New FC Slot			
<div>Procedure Comments:</div> <div>PENDING AIRNAV DATA 11/27/2025 USED FOR KFSO.</div> <div>CANCELS FDC NOTAM #3/6678 - PROCEDURE NA.</div> <div>AIRPORT MAGVAR UPDATED. RUNWAY NUMBERS UPDATED.</div> <div>CONTACT ROBERT G. HAMILTON, AJV-A33 405-954-4608.</div> <div><div>QUALITY 38 CHECKED</div><div>QUALITY 23 CHECKED</div></div>					

WAAS CH <b>48900</b> <b>W01A</b>	APP CRS <b>005°</b>	Rwy Idg TDZE <b>228</b> Apt Elev <b>228</b>
--	------------------------	---

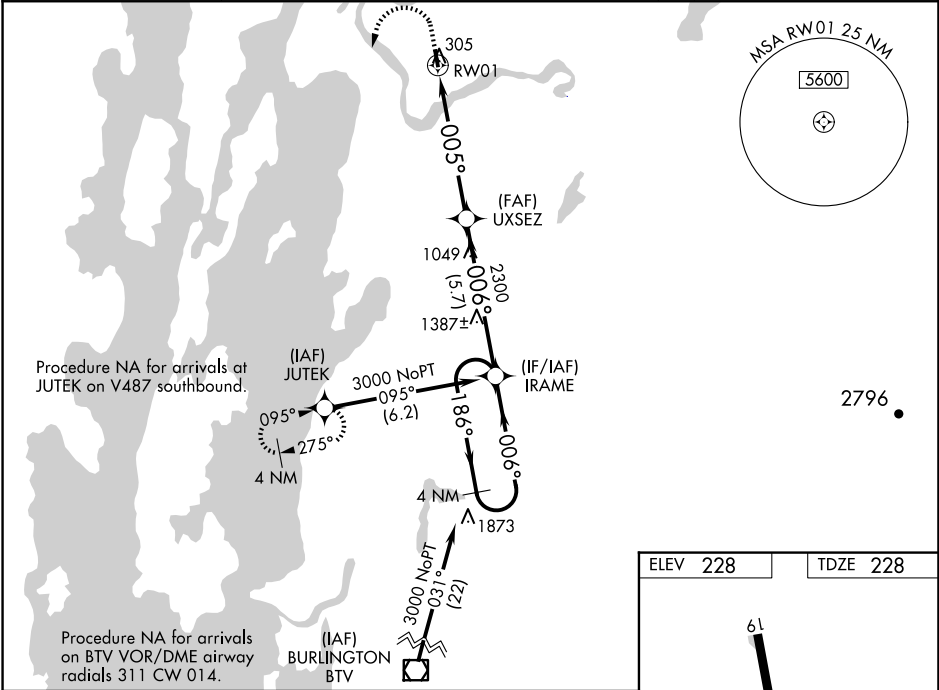
RNAV (GPS) RWY 1  
FRANKLIN COUNTY STATE (F'SO)

**RNP APCH-GPS.**

**⚠** For uncompensated Baro-VNAV systems, LNAV/VNAV NA below -15°C or above 54°C.  
**⚠** Rwy 1 helicopter visibility reduction below 1 SM NA.  
Procedure NA at night.

**MISSED APPROACH:** Climb to 1100 then climbing left turn to 3000 direct JUTEK and hold.

AWOS-3 <b>119.025</b>	BURLINGTON APP CON ★ (EAST) <b>121.1</b> <b>278.8</b> (WEST) <b>360.8</b>	UNICOM <b>122.8</b> (CTAF) <b>0</b>
--------------------------	---	--



4 NM Holding Pattern

IRAME

3000 ← 186° → 006° → 006° → 005° → RW01

GP 3.40° TCH 59

UXSEZ 2300

3000 NoPT

3000

1100

3000

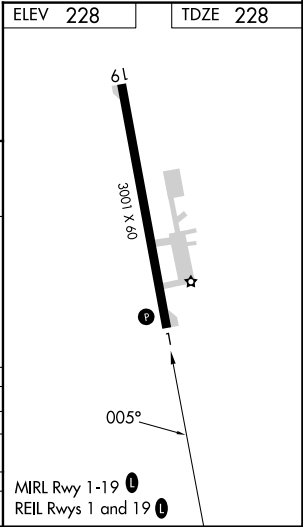
JUTEK

VGSI and RNAV glidepath angle not coincident (VGSI Angle 4.00/TCH 40).

5.7 NM

5.6 NM

CATEGORY	A	B	C	D
LPV DA	512-1	284 (300-1)		NA
LNAV/VNAV DA	1024-2½	796 (800-2½)		NA
LNAV MDA	920-1	692 (700-1)		NA
CIRCLING	920-1 692 (700-1)	960-1 732 (800-1)		NA



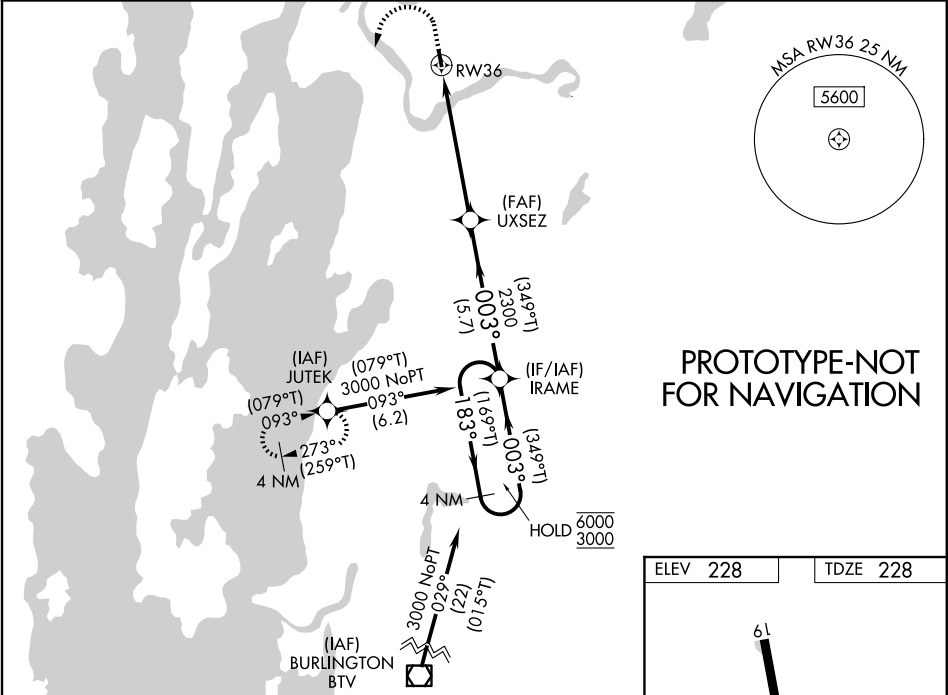
NE-1, 20 MAR 2025 to 17 APR 2025

NE-1, 20 MAR 2025 to 17 APR 2025

WAAS CH <b>48900</b> <b>W36A</b>	APP CRS <b>003°</b>	Rwy Ldg TDZE <b>228</b> Apt Elev <b>228</b>
--	------------------------	---

RNAV (GPS) RWY 36  
FRANKLIN COUNTY STATE (F'SO)

RNP APCH - GPS.  For uncompensated Baro-VNAV systems, LNAV/VNAV NA below -15°C or above 54°C. Rwy 36 helicopter visibility reduction below ¾ SM NA. Circling to Rwy 18 NA at night. When local altimeter setting not received, use PBG altimeter setting and increase LPV DA to 576 feet; increase LNAV/VNAV DA to 1088 feet; increase all MDAs 80 feet and LNAV visibility Cat B ¼ SM, and Circling visibility Cat B ¼ SM. Baro-VNAV and VDP NA when using PBG altimeter setting.		MISSED APPROACH: Climb to 1100 then climbing left turn to 3000 direct JUTEK and hold.
AWOS-3 <b>119.025</b>	BURLINGTON APP CON ★ <b>121.1</b> (EAST) <b>278.8</b> (WEST) <b>360.8</b>	UNICOM <b>122.8</b> (CTAF) <b>0</b>

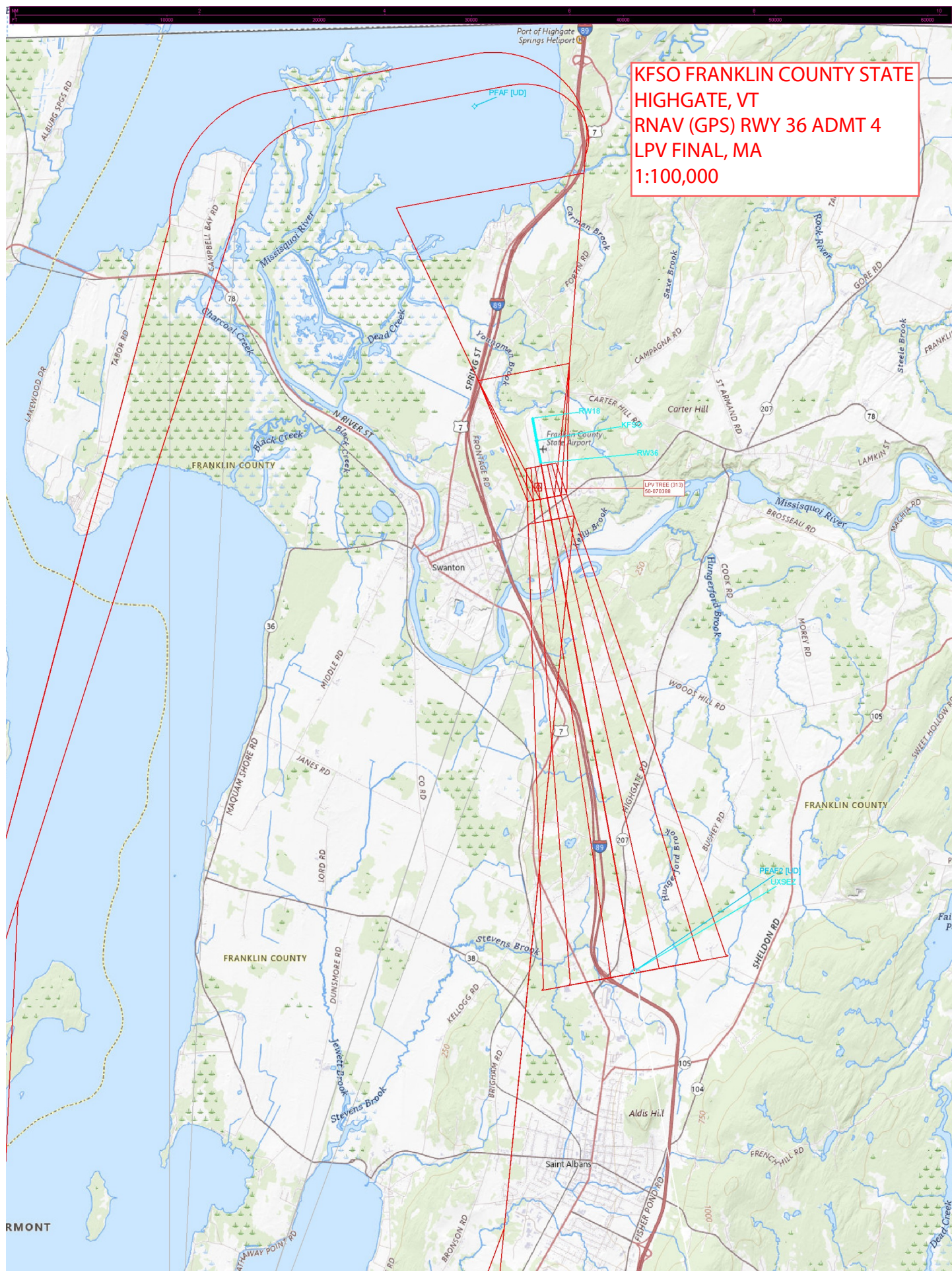


VGSI and RNAV glidepath angle not coincident (VGSI Angle 4.00/TCH 40).		1100	3000	JUTEK
4 NM Holding Pattern (169°T) IRAME		UXSEZ	1.5 NM to RW36	RW36
GP 3.40° TCH 59		2300	2300	
5.7 NM		4.1 NM	1.5 NM	
CATEGORY	A	B	C	D
LPV DA	512-1	284 (300-1)		NA
LNAV/VNAV DA	1024-2½	796 (800-2½)		NA
LNAV MDA	920-1	692 (700-1)		NA
CIRCLING	920-1 692 (700-1)	960-1 732 (800-1)		NA

ELEV 228 TDZE 228

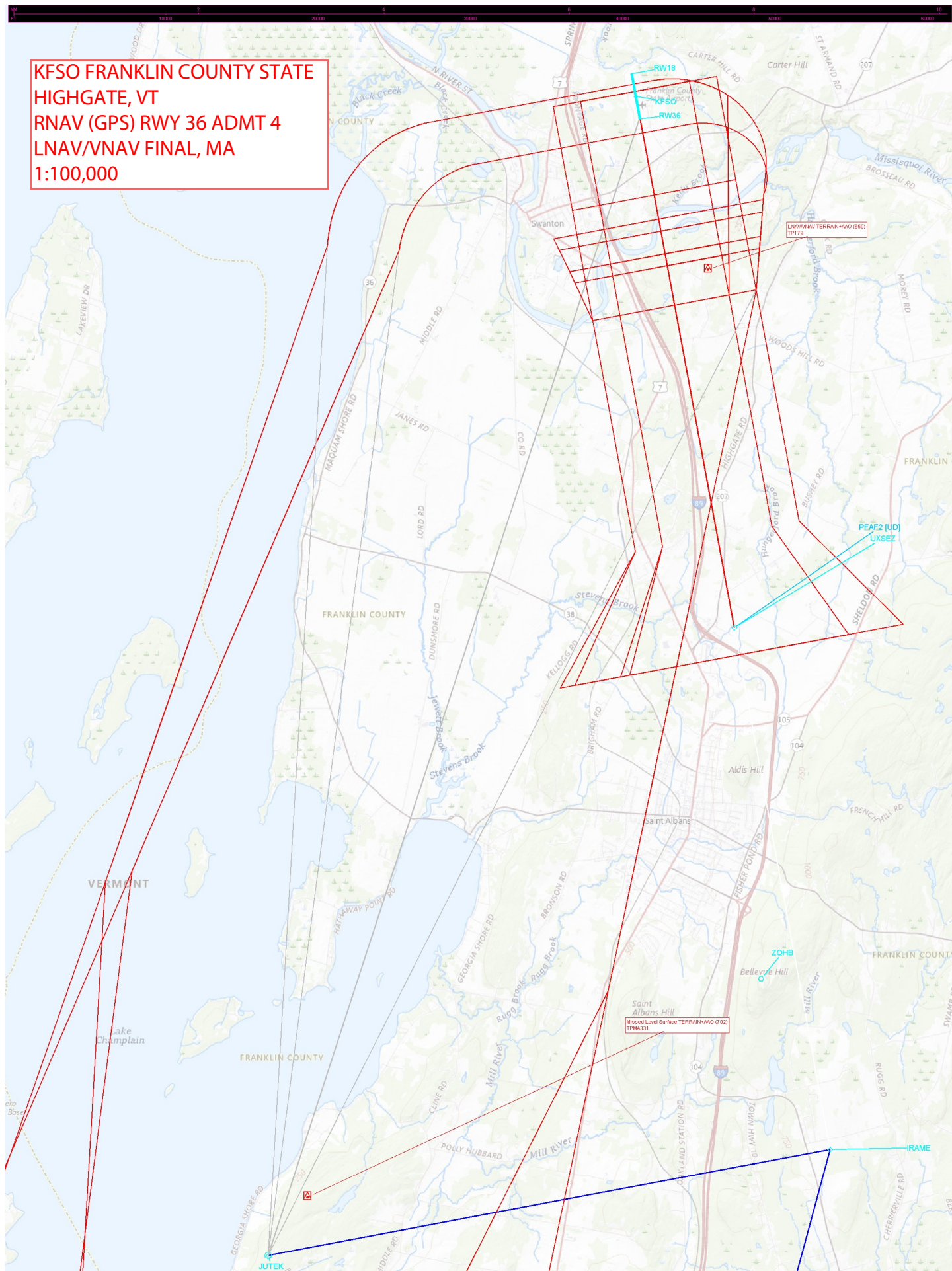
MIRL Rwy 1-19 0  
REIL Rwy 1 and 19 0



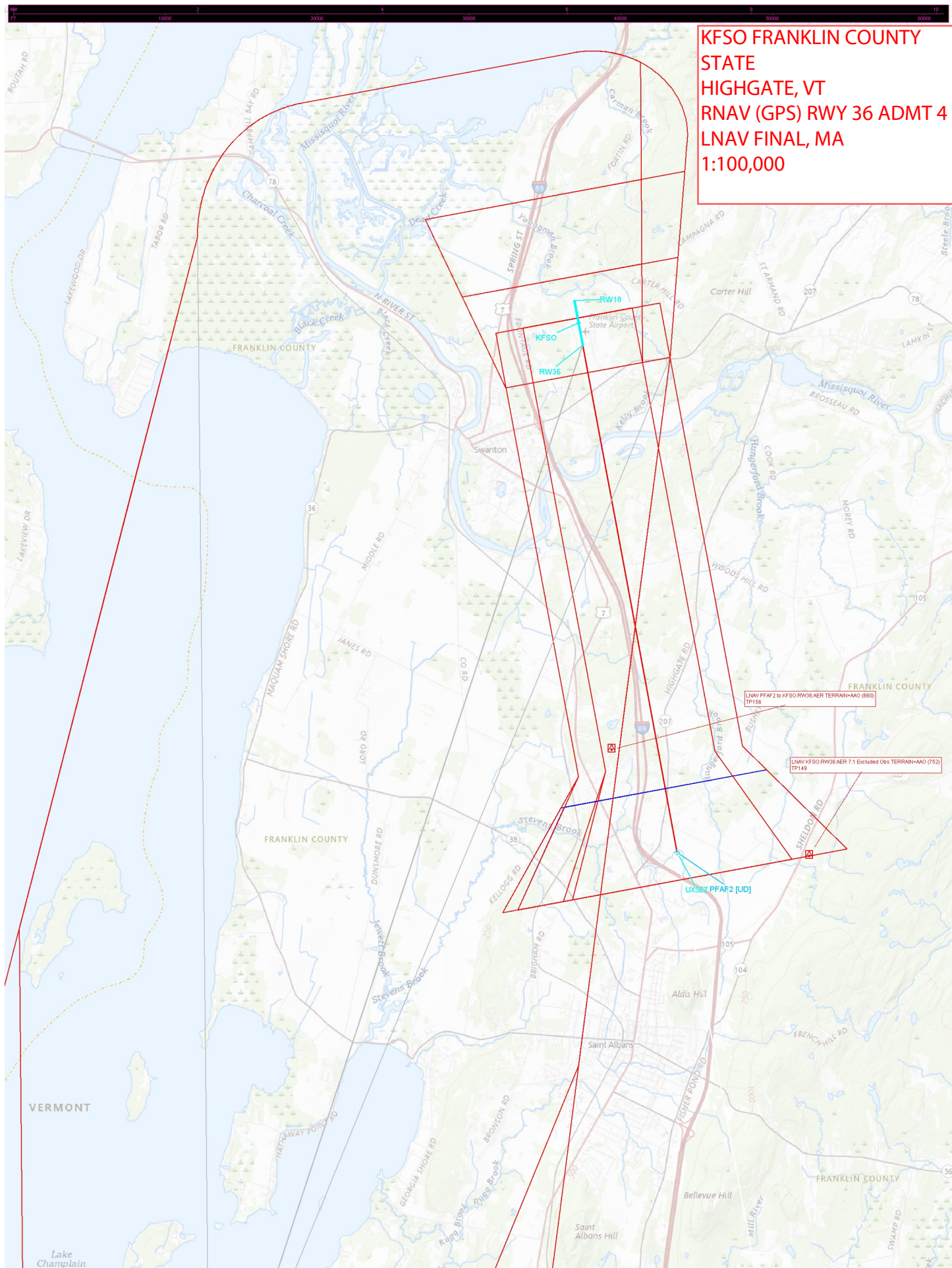




KFSO FRANKLIN COUNTY STATE  
HIGHGATE, VT  
RNAV (GPS) RWY 36 ADMT 4  
LNAV/VNAV FINAL, MA  
1:100,000







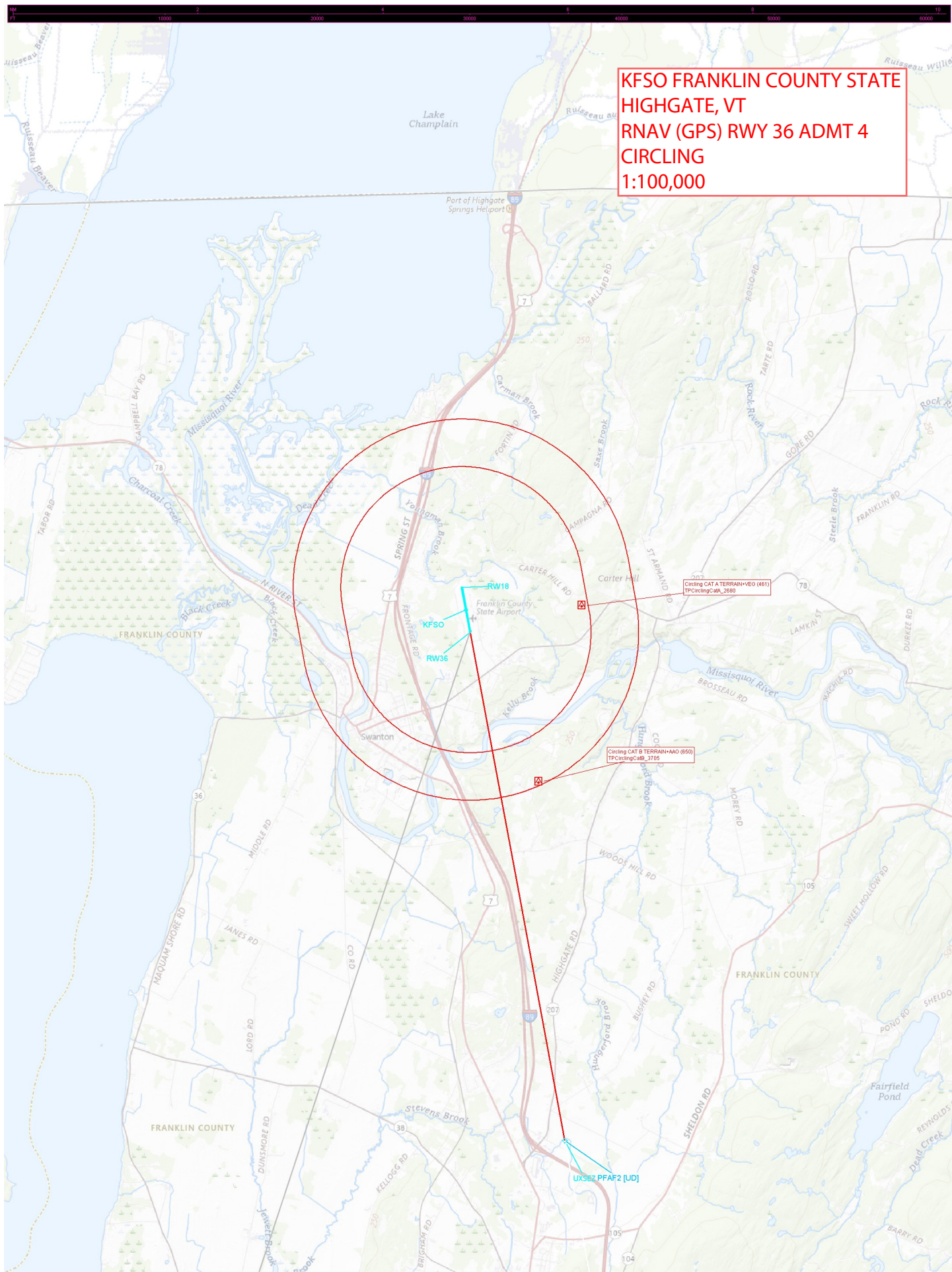
KFSO FRANKLIN COUNTY  
STATE  
HIGHGATE, VT  
RNAV (GPS) RWY 36 ADMT 4  
LNAV FINAL, MA  
1:100,000

LNAV PFAF 2 to KFSO RW36 AER TERRAIN+AO (660)  
TP156

LNAV KFSO RW36 AER T-1 Excluded Obs TERRAIN+AO (752)  
TP149

USEZ PFAF2 [UD]





KFSO FRANKLIN COUNTY STATE  
HIGHGATE, VT  
RNAV (GPS) RWY 36 ADMT 4  
CIRCLING  
1:100,000

Circling CAT A TERRAIN+40 (401)  
TPCirclingCatA\_2680

Circling CAT B TERRAIN+40 (450)  
TPCirclingCatB\_3705

UXSEZ PFAF2 [UD]



[illegible]