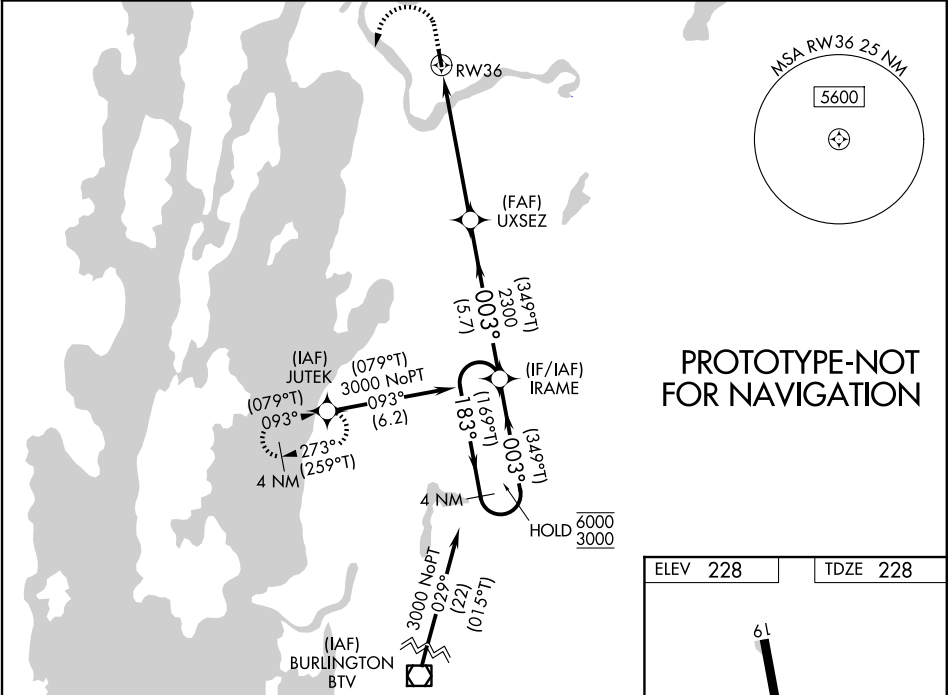


WAAS CH <b>48900</b> <b>W36A</b>	APP CRS <b>003°</b>	Rwy Ldg TDZE <b>228</b> Apt Elev <b>228</b>
----------------------------------------	------------------------	---------------------------------------------------

RNAV (GPS) RWY 36  
FRANKLIN COUNTY STATE (F'SO)

RNP APCH - GPS.  For uncompensated Baro-VNAV systems, LNAV/VNAV NA below -15°C or above 54°C. Rwy 36 helicopter visibility reduction below ¾ SM NA. Circling to Rwy 18 NA at night. When local altimeter setting not received, use PBG altimeter setting and increase LPV DA to 576 feet; increase LNAV/VNAV DA to 1088 feet; increase all MDAs 80 feet and LNAV visibility Cat B ¼ SM, and Circling visibility Cat B ¼ SM. Baro-VNAV and VDP NA when using PBG altimeter setting.		MISSED APPROACH: Climb to 1100 then climbing left turn to 3000 direct JUTEK and hold.
AWOS-3 <b>119.025</b>	BURLINGTON APP CON★ <b>121.1</b> (EAST) <b>278.8</b> (WEST) <b>360.8</b>	UNICOM <b>122.8</b> (CTAF) <b>0</b>



VGSI and RNAV glidepath angle not coincident (VGSI Angle 4.00/TCH 40).		1100	3000	JUTEK
4 NM Holding Pattern (169°T) IRAME		UXSEZ	2300	1.5 NM to RWY36
GP 3.40° TCH 59		2300	5.7 NM	4.1 NM
4 NM		4.1 NM	1.5 NM	
CATEGORY	A	B	C	D
LPV DA	512-1	284 (300-1)		NA
LNAV/VNAV DA	1024-2½	796 (800-2½)		NA
LNAV MDA	920-1	692 (700-1)		NA
CIRCLING	920-1 692 (700-1)	960-1 732 (800-1)		NA

