

Flight Procedures Cover Page	Task Action: FLIGHT CHECK	Task Type: SID	Estimated Chart Date: 10/5/2023	APWS Task ID: 66D11BD695944BB881C50344EE7181A8	APWS Project ID: 1D960267CA254B41BECED55A28FF5655
Procedure: SID KERMIT FOUR ALBEMARLE NC KUUJ		Enroute: YES	Specialist: Vega, Ana		Agreement Number:
Airport ID: KUUJ			Airport City: ALBEMARLE		State: NC
Facility ID:	Facility Type:	Flight Inspection Remark Type: New FC Slot			
<div>Procedure Comments: ACTIVE DATA USED.</div> <div>ABBREVIATED AMENDMENT</div> <div>CANCEL FDC 3/0577 - KUUJ RWY 04R UPDATED TAKEOFF MINIMUMS.</div> <div>CANCEL CLT 05/427 - KCLT RWY 05/23 PERMANENT CLOSURE.</div> <div>CANCEL FDC 3/0602.</div> <div>CONTACT: MARK ADAMS TEAM 1 SUBTEAM-B 405-954-9946.</div> <div><div>QUALITY 20 CHECKED</div><div>QUALITY 9 CHECKED</div><div>Digitally signed by MARK D ADAMS May 12, 2023</div></div>					

FIPC BASIC FORM						
PROCEDURE: SID KERMIT FOUR ALBEMARLE NC KVUJ			AIRPORT NAME: STANLY COUNTY		AIRPORT ID: KVUJ	SPECIAL CONTROL NO: AP-05-162-23
FAC ID: KERMIT4		CITY: ALBEMARLE			ST: NC	ORIG CHART DATE: 10/05/2023
DFL TYPE: PROC/T	THIRD PARTY: <input type="checkbox"/> YES	EST. TIME ON SITE: 0.4	REIMB. NUMBER:	PTS TASK ID: 66D11BD695944BB881C50344EE7181A8		
PREFLIGHT NOTES						
REVIEWER:					DATE:	
COMMENTS:					CHECK ONE: <input type="checkbox"/> FLT CK REQ <input type="checkbox"/> NFCR <input type="checkbox"/> REJECT	
						YES
					CPV COMPLETE? <input checked="" type="checkbox"/> X <input type="checkbox"/> NO	
PROCEDURE RESULTS						
INSPECTION DATE: 09/15/2023	CREW #: VN327	N #: N86	INSTRUMENT PROCEDURE STATUS: <input checked="" type="checkbox"/> SAT <input type="checkbox"/> SAT W/CHANGES <input type="checkbox"/> UNSAT		ARINC CODING: <input checked="" type="checkbox"/> SAT <input type="checkbox"/> SAT/GOLD <input type="checkbox"/> UNSAT	
FLIGHT INSPECTOR SIGNATURE: jeffrey eckman @ 09/16/2023 08:54			PRINTED NAME: ECKMAN, JEFFREY ALAN			NOTAM INITIATED? <input type="checkbox"/> YES <input checked="" type="checkbox"/> NO
FLIGHT INSPECTOR REMARKS: Procedure SAT as proposed.						
IN-FLIGHT OBSTACLE REPORT						
OBSTRUCTION ID #:	COORDINATES OR LOCATION:	GNSS ALTITUDE (MSL):	BAROMETRIC ALTITUDE (MSL):	HEIGHT ABOVE GROUND LEVEL:		

(KER4.KER) FIG
KERMIT FOUR DEPARTURE

AL-6707 (FAA)

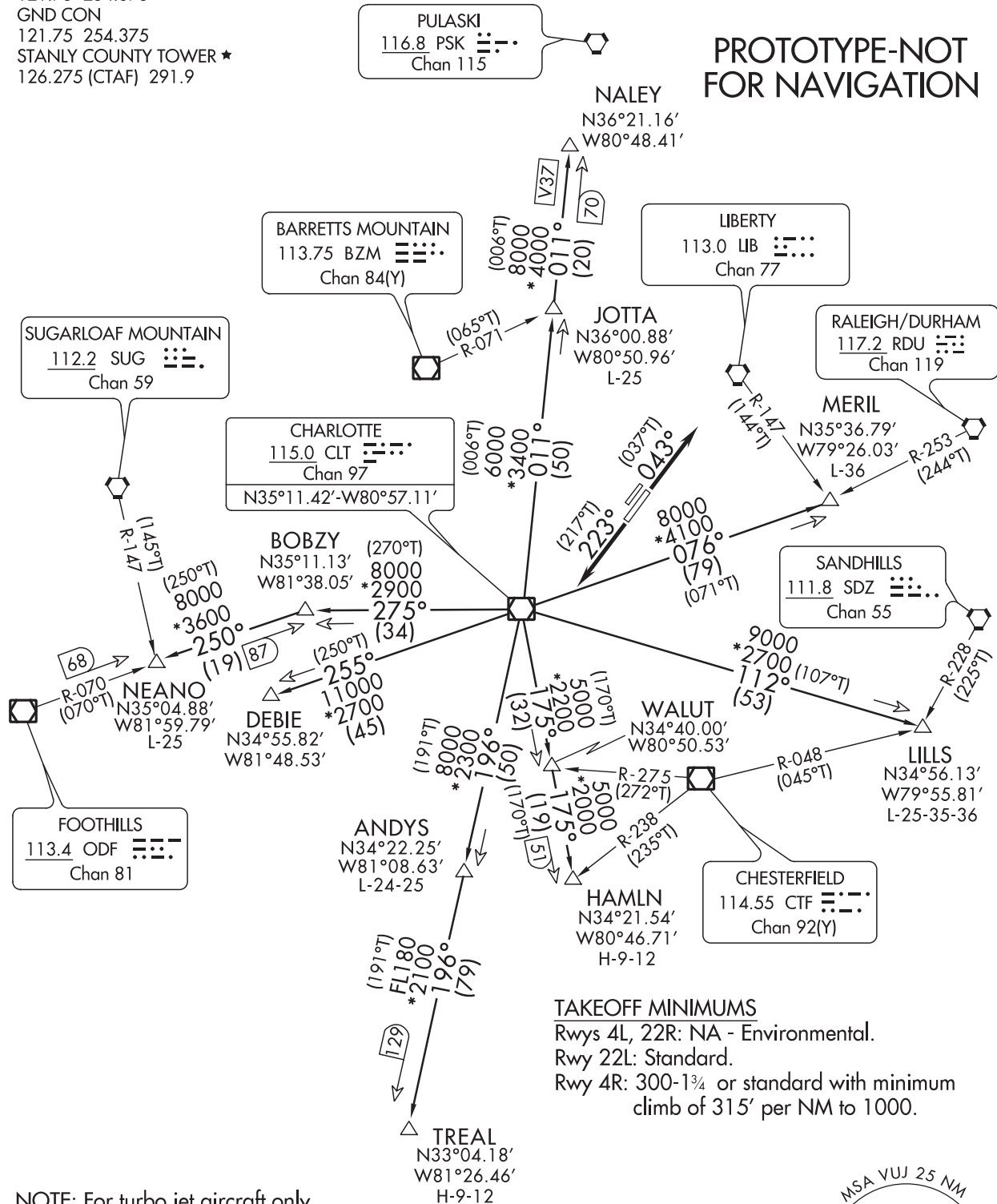
STANLY COUNTY (VUJ)
ALBEMARLE, NORTH CAROLINA

CHARLOTTE DEP CON
128.325 307.8
CLNC DEL
121.75 254.375
GND CON
121.75 254.375
STANLY COUNTY TOWER ★
126.275 (CTAF) 291.9

RADAR and DME required.

TOP ALTITUDE:
3000

**PROTOTYPE-NOT
FOR NAVIGATION**



KERMIT FOUR DEPARTURE
(KER4.KER) FIG

ALBEMARLE, NORTH CAROLINA
STANLY COUNTY (VUJ)

KERMIT FOUR DEPARTURE



DEPARTURE ROUTE DESCRIPTION

TAKEOFF RUNWAY 4R: Climb on heading 043°, thence

TAKEOFF RUNWAY 22L: Climb on heading 223°, thence

. . . . on RADAR vectors to intercept filed/assigned transition or enroute fix/navaid.
Maintain 3000, expect filed altitude/flight level 10 minutes after departure.

ANDYS TRANSITION (KER4.ANDYS): From over CLT VOR/DME on CLT R-196 to ANDYS.

DEBIE TRANSITION (KER4.DEBIE): From over CLT VOR/DME on CLT R-255 to DEBIE.

HAMLN TRANSITION (KER4.HAMLN): From over CLT VOR/DME on CLT R-175 to HAMLN.

JOTTA TRANSITION (KER4.JOTTA): From over CLT VOR/DME on CLT R-011 to JOTTA.

LILLS TRANSITION (KER4.LILLS): From over CLT VOR/DME on CLT R-112 to LILLS.

MERIL TRANSITION (KER4.MERIL): From over CLT VOR/DME on CLT R-076 to MERIL.

NALEY TRANSITION (KER4.NALEY): From over CLT VOR/DME on CLT R-011 to NALEY.

NEANO TRANSITION (KER4.NEANO): From over CLT VOR/DME on CLT R-275 to BOBZY
and ODF R-070 to NEANO.

TREAL TRANSITION (KER4.TREAL): From over CLT VOR/DME on CLT R-196 to TREAL.

PROTOTYPE-NOT FOR NAVIGATION

(KER3.KER) 22307

AL-6707 (FAA)

KERMIT THREE DEPARTURE

STANLY COUNTY (VUJ)
ALBEMARLE, NORTH CAROLINA

AWOS-3

128.175

CLNC DEL

121.75 254.375

GND CON

121.75 254.375

STANLY COUNTY TOWER★

126.275 (CTAF) 291.9

UNICOM

123.0

CHARLOTTE DEP CON

128.325 307.8

OLD

**TOP ALTITUDE:
3000**

PULASKI
116.8 PSK
Chan 115
N37°05.26'
W80°42.77'

NALEY

N36°21.16'
W80°48.41'

BARRETT'S MOUNTAIN
113.75 BZM
Chan 84(Y)

SUGARLOAF MOUNTAIN
112.2 SUG
Chan 59

CHARLOTTE
115.0 CLT
Chan 97
N35°11.42'
W80°57.11'

BOBZY
N35°11.13'
W81°38.05'

JOTTA
N36°00.88'
W80°50.96'
L-25

RALEIGH/DURHAM
117.2 RDU
Chan 119

MERIL
N35°36.79'
W79°26.03'
L-36

SANDHILLS
111.8 SDZ
Chan 55

NEANO
N35°04.88'
W81°59.79'
L-25

DEBIE
N34°55.82'
W81°48.53'

FOOTHILLS
113.4 ODF
Chan 81

ANDYS
N34°22.25'
W81°08.63'
L-24-25

HAMLN
N34°21.54'
W80°46.71'
H-12

CHESTERFIELD
114.55 CTF
Chan 92(Y)

WALUT
N34°40.00'
W80°50.53'

LILLS
N34°56.13'
W79°55.81'
L-25-35-36

TAKEOFF MINIMUMS

Rwys 4L, 22R: NA.

Rwy 22L: Standard.

Rwy 4R: 300-1½ or standard with minimum climb of 276' per NM to 1000.

NOTE: For turbojet aircraft only.
NOTE: RADAR and DME required.
NOTE: Upon reaching 10000 MSL, accelerate to and maintain 280K, if unable advise ATC.
NOTE: Transponder code will be issued via Charlotte clearance delivery.

(NARRATIVE ON FOLLOWING PAGE)

NOTE: Chart not to scale.

KERMIT THREE DEPARTURE

(KER3.KER) 03JAN19

ALBEMARLE, NORTH CAROLINA
STANLY COUNTY (VUJ)

SE-2, 29 DEC 2022 to 26 JAN 2023

SE-2, 29 DEC 2022 to 26 JAN 2023

KERMIT THREE DEPARTURE



DEPARTURE ROUTE DESCRIPTION

TAKEOFF RWY 4R: Climb heading 043°, thence. . . .

TAKEOFF RWY 22L: Climb heading 223°, thence. . . .

. . . .on RADAR vectors to intercept filed/assigned transition or enroute fix/navaid.
Maintain 3000, expect filed altitude/flight level 10 minutes after departure.

ANDYS TRANSITION (KER3.ANDYS): From over CLT VOR/DME on CLT R-196 to ANDYS.

DEBIE TRANSITION (KER3.DEBIE): From over CLT VOR/DME on CLT R-255 to DEBIE.

HAMLN TRANSITION (KER3.HAMLN): From over CLT VOR/DME on CLT R-175 to HAMLN.

JOTTA TRANSITION (KER3.JOTTA): From over CLT VOR/DME on CLT R-011 to JOTTA.

LILLS TRANSITION (KER3.LILLS): From over CLT VOR/DME on CLT R-112 to LILLS.

MERIL TRANSITION (KER3.MERIL): From over CLT VOR/DME on CLT R-076 to MERIL.

NALEY TRANSITION (KER3.NALEY): From over CLT VOR/DME on CLT R-011 to NALEY.

NEANO TRANSITION (KER3.NEANO): From over CLT VOR/DME on CLT R-275 to BOBZY
and ODF R-070 to NEANO.

TREAL TRANSITION (KER3.TREAL): From over CLT VOR/DME on CLT R-196 to TREAL.

SE-2, 29 DEC 2022 to 26 JAN 2023

SE-2, 29 DEC 2022 to 26 JAN 2023



AIRPORT ID	KVUJ
AIRPORT NAME	STANLY COUNTY
CITY	ALBEMARLE
STATE	NC
Proc ID:	KERMIT FOUR
Scale	1" = 100,000
RWY 4R	

