

Flight Procedures Cover Page	Task Action: Abbreviated Amendment	Task Type: IAP	Estimated Chart Date: 06/15/2023	APWS Task ID: 66C28A18A83B4853AB6BA6B9D02B2D4E	APWS Project ID: 7FC802803DD0469A8A58ECD3F99E12E7
Procedure: VOR/DME -A AMDT 2D		Enroute: NO	Specialist: Boone-walt, Rose		Agreement Number:
Airport ID: W99			Airport City: PETERSBURG		State: WV
Facility ID:	Facility Type:	Flight Inspection Remark Type:			
<div>Procedure Comments: Processed IAW Technical Support Group (AJF-17) Memo dated 07/07/2021, Subject: Guidance for Procedural Changes Requiring Flight Inspection/Validation</div> <div>CONTACT: JASON KRETSCHMER AJV-A421 LEAD: 405.954.4019</div> <div><div>Digitally signed by JASON KRETSCHMER Feb 21, 2023</div><div>QUALITY 9 CHECKED</div><div>QUALITY 10 CHECKED</div></div>					

OLD

PETERSBURG, WEST VIRGINIA

AL-6500 (FAA)

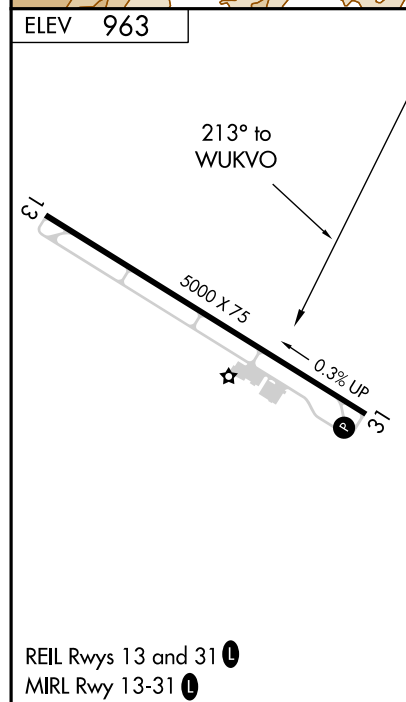
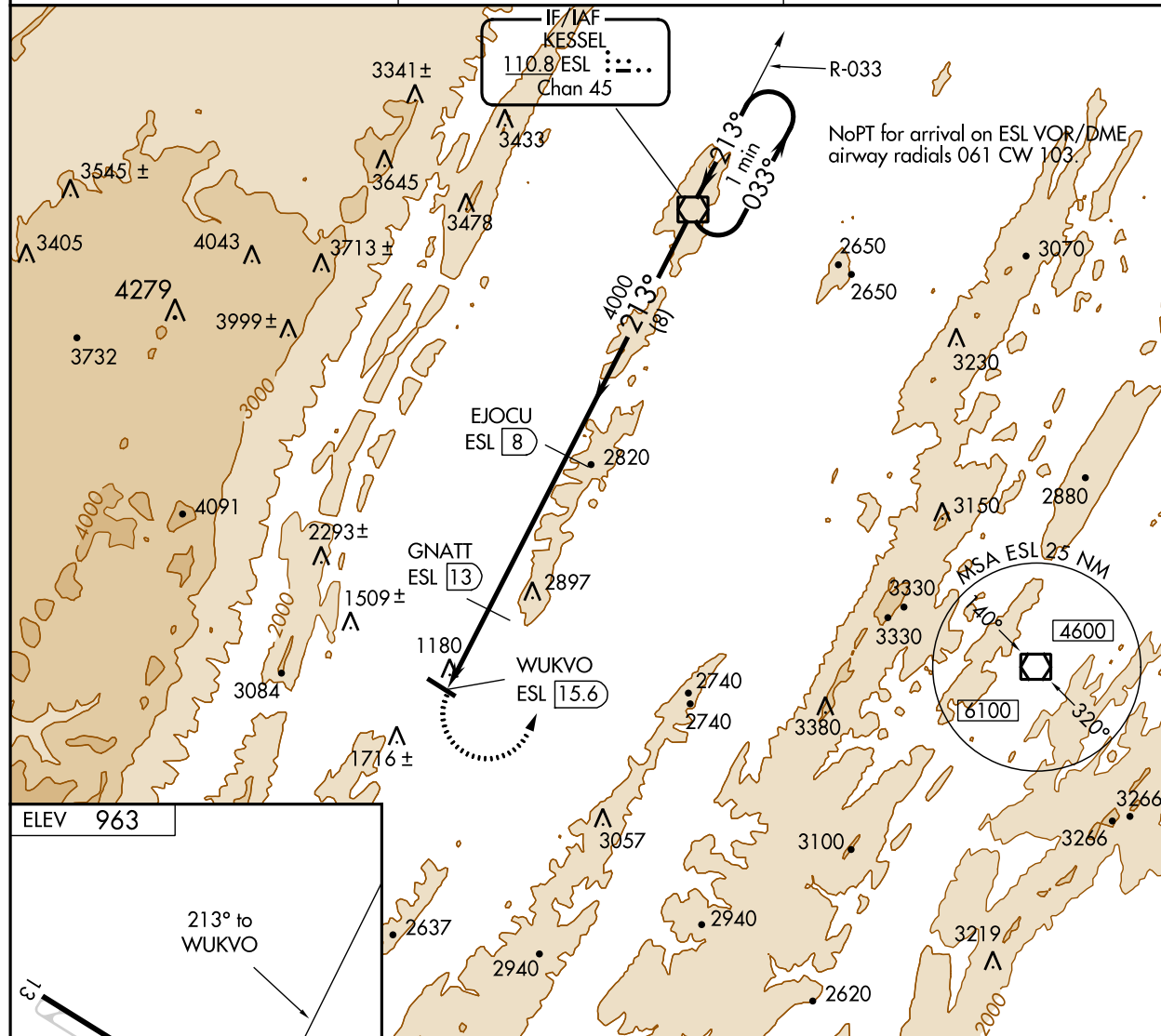
21168

VOR/DME ESL	APP CRS	Rwy Idg	N/A
110.8	213°	TDZE	N/A
Chan 45		Apt Elev	963

VOR/DME-A
GRANT COUNTY (W99)

 NA -8°C	MISSED APPROACH: Climbing left turn to 5000 direct ESL VOR/DME and hold.
----------------	--

AWOS-3 124.475	WASHINGTON CENTER 133.65 285.6	UNICOM 122.8 (CTAF)
--------------------------	--	-------------------------------



5000	ESL				
GNATT ESL 13	EJOUCU ESL 8	ESL VOR/DME			
WUKVO ESL 15.6	4000		033° → 5000		
3500		213°		← 213°	
2.6 NM		5 NM		8 NM	
CATEGORY	A	B	C	D	
CIRCLING	3100-1¼ 2137 (2200-1¼)	3100-1½ 2137 (2200-1½)	3100-3 2137 (2200-3)	NA	

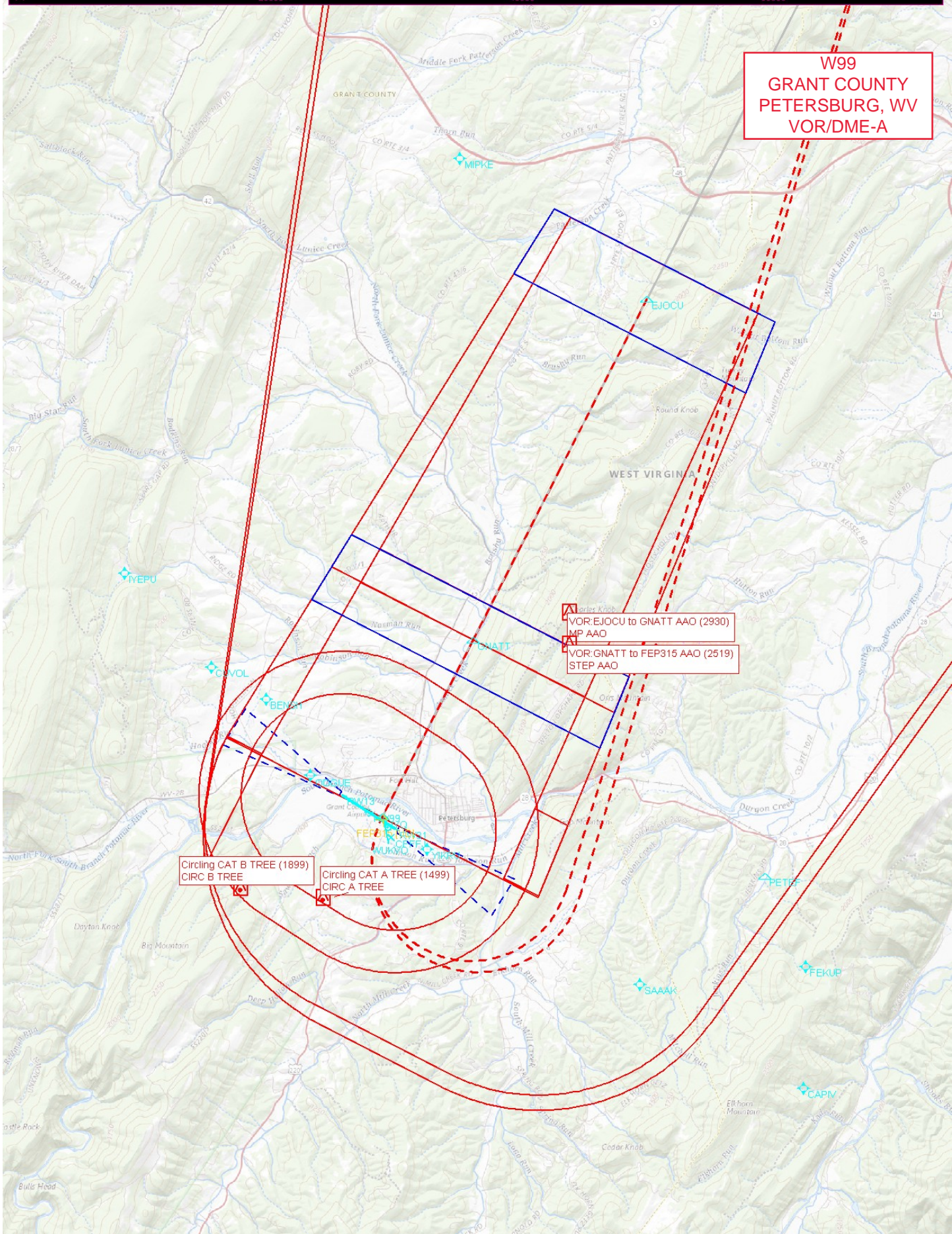
PETERSBURG, WEST VIRGINIA
Amdt 2C 17JUN21

39°00'N-79°09'W

GRANT COUNTY (W99)
VOR/DME-A



W99
GRANT COUNTY
PETERSBURG, WV
VOR/DME-A



Circling CAT B TREE (1899)
CIRC B TREE

Circling CAT A TREE (1499)
CIRC A TREE

VOR: EJOUC to GNATT AAO (2930)
MP AAO
VOR: GNATT to FEP315 AAO (2519)
STEP AAO