

Flight Procedures Cover Page	Task Action: FLIGHT CHECK	Task Type: IAP	Estimated Chart Date: 10/07/2021	APWS Task ID: 666DEF8FE3BE4F17831A6D1DEFB02036	APWS Project ID: 0E39691BF628486490F4ECBBF3A2E2B8
Procedure: RNAV (GPS) RWY 10 AMDT 2A		Enroute: NO	Specialist: Dougherty, Steven		Agreement Number:
Airport ID: O27			Airport City: OAKDALE		State: CA
Facility ID:	Facility Type:	Flight Inspection Remark Type: New FC Slot			
<div>Procedure Comments:</div> <div>PROCESSED IAW AIRCRAFT OPERATIONS GROUP (AJF-1000) MEMO, DATED JUNE 4, 2020, SUBJECT: FLIGHT INSPECTION OF NEW CONTROLLING OBSTACLES.</div> <div>ABBREVIATED AMENDMENT FOR NOTAM CLEARING. TNOTAM FDC 1/9051.</div> <div>PENDING AIRNAV DATA USED.</div> <div>CRC UPDATED TO 20B1C9DA.</div> <div>CONTACT BEV BORDY, AJV-A411, 405-954-8293.</div> <div>J ZEDER 07/13/2021</div> <div>QUALITY 16 CHECKED</div> <div>QUALITY 38 CHECKED</div>					

OLD

OAKDALE, CALIFORNIA

AL-6135 (FAA)

19283

WAAS CH 42524 W10A	APP CRS 096°	Rwy Idg TDZE Apt Elev 3013 237 237
----------------------------------------	------------------------	------------------------------------------------------------------------

RNAV (GPS) RWY 10

OAKDALE (O27)

NA Baro-VNAV NA. DME/DME RNP-0.3 NA.
Use Modesto altimeter setting; when not received, use Stockton altimeter setting and increase all DA 36 feet and all MDA 40 feet; increase LPV and LNAV/VNAV all Cats and LNAV Cat C visibility $\frac{1}{8}$ SM.

MISSED APPROACH: Climb to 4000 direct NOMAE and on track 114° to AWALI and hold, continue climb-in-hold to 4000.

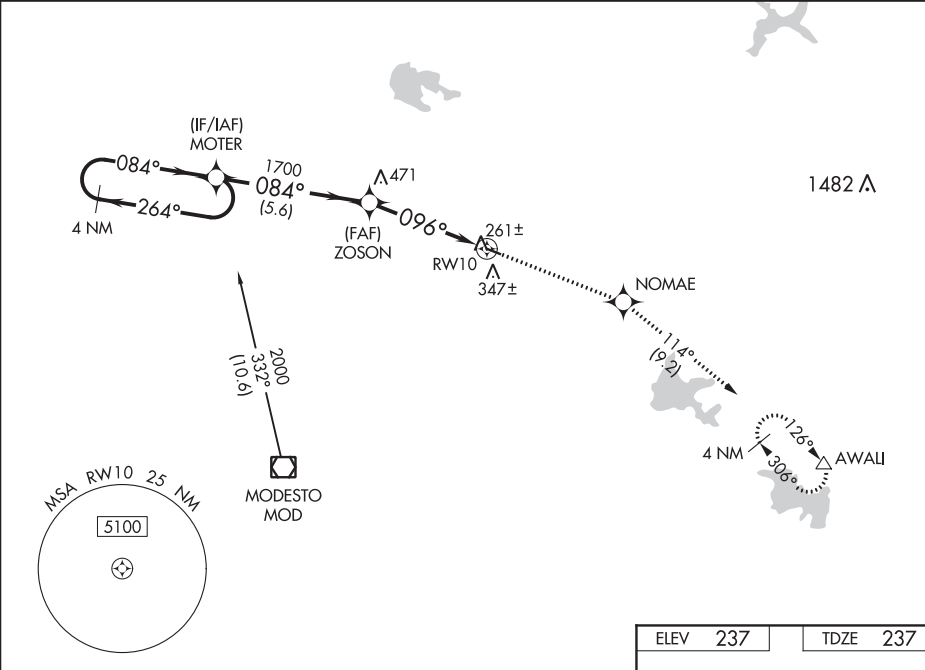
MOD ASOS
127.7

NORCAL APP CON
125.1 363.2

UNICOM
122.8 (CTAF)

SW-2, 22 APR 2021 to 20 MAY 2021

SW-2, 22 APR 2021 to 20 MAY 2021



<p>VGSI and RNAV glidepath not coincident (VGSI Angle 2.50/TCH 22).</p> <p>4 NM Holding Pattern</p> <p>2000 ← 264° → 084° →</p> <p>GP 3.00° TCH 40</p> <p>5.6 NM</p> <p>1700</p> <p>084°</p> <p>096°</p> <p>4.5 NM</p> <p>RW10</p> <p>096° to RW10</p> <p>0.4% UP</p> <p>3013 x 75</p> <p>28</p>				
CATEGORY	A	B	C	D
LPV DA	531-1	294 (300-1)		NA
LNAV/VNAV DA	555-1 $\frac{1}{8}$	318 (400-1 $\frac{1}{8}$)		NA
LNAV MDA	760-1	523 (600-1)	760-1 $\frac{1}{2}$ 523 (600-1 $\frac{1}{2}$)	NA
CIRCLING	760-1 523 (600-1)	820-1 583 (600-1)	920-2 683 (700-2)	NA

REIL Rwy 10 and 28
MIRL Rwy 10-28

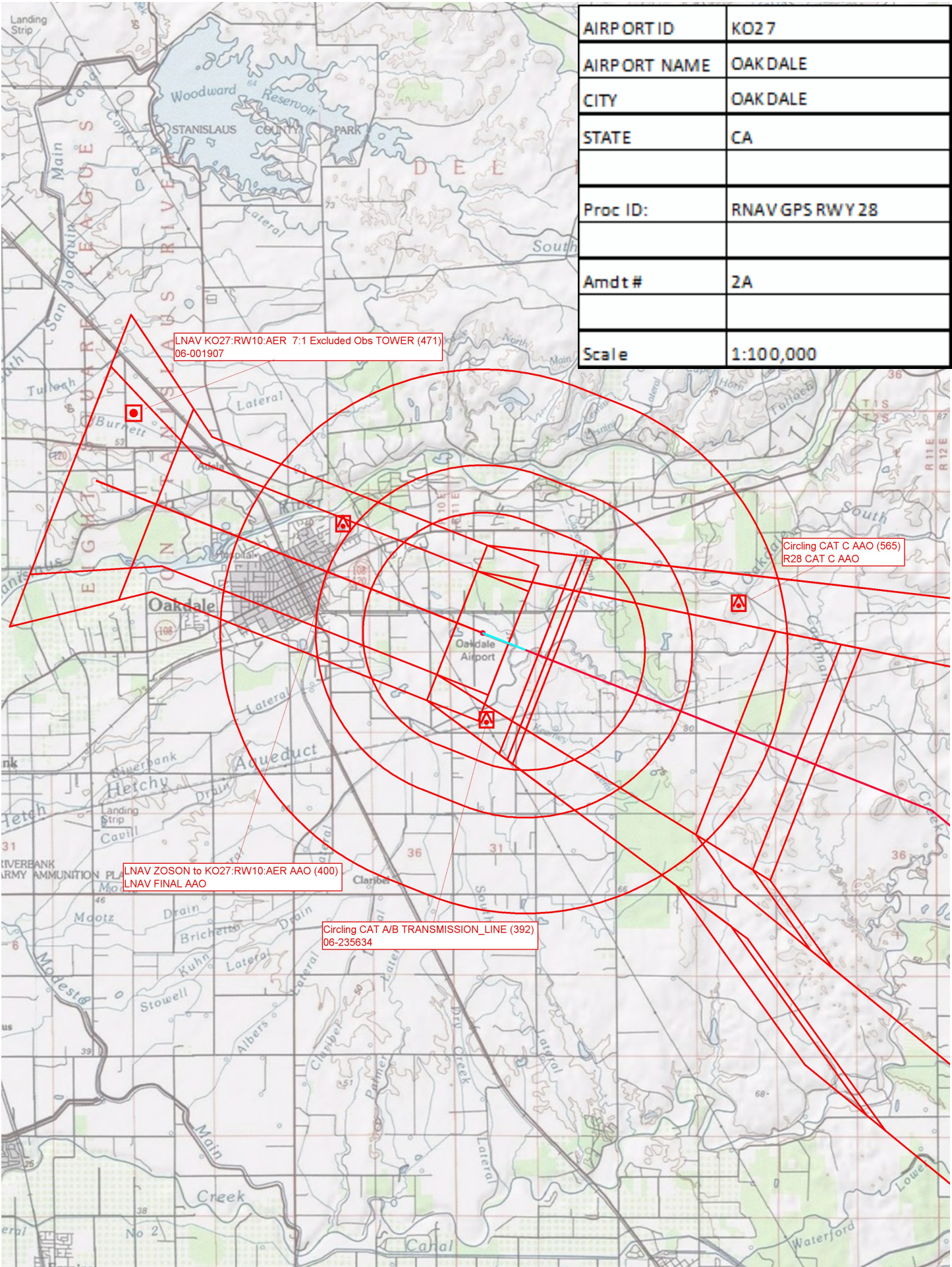
OAKDALE, CALIFORNIA
Amdt 2 22JUN17

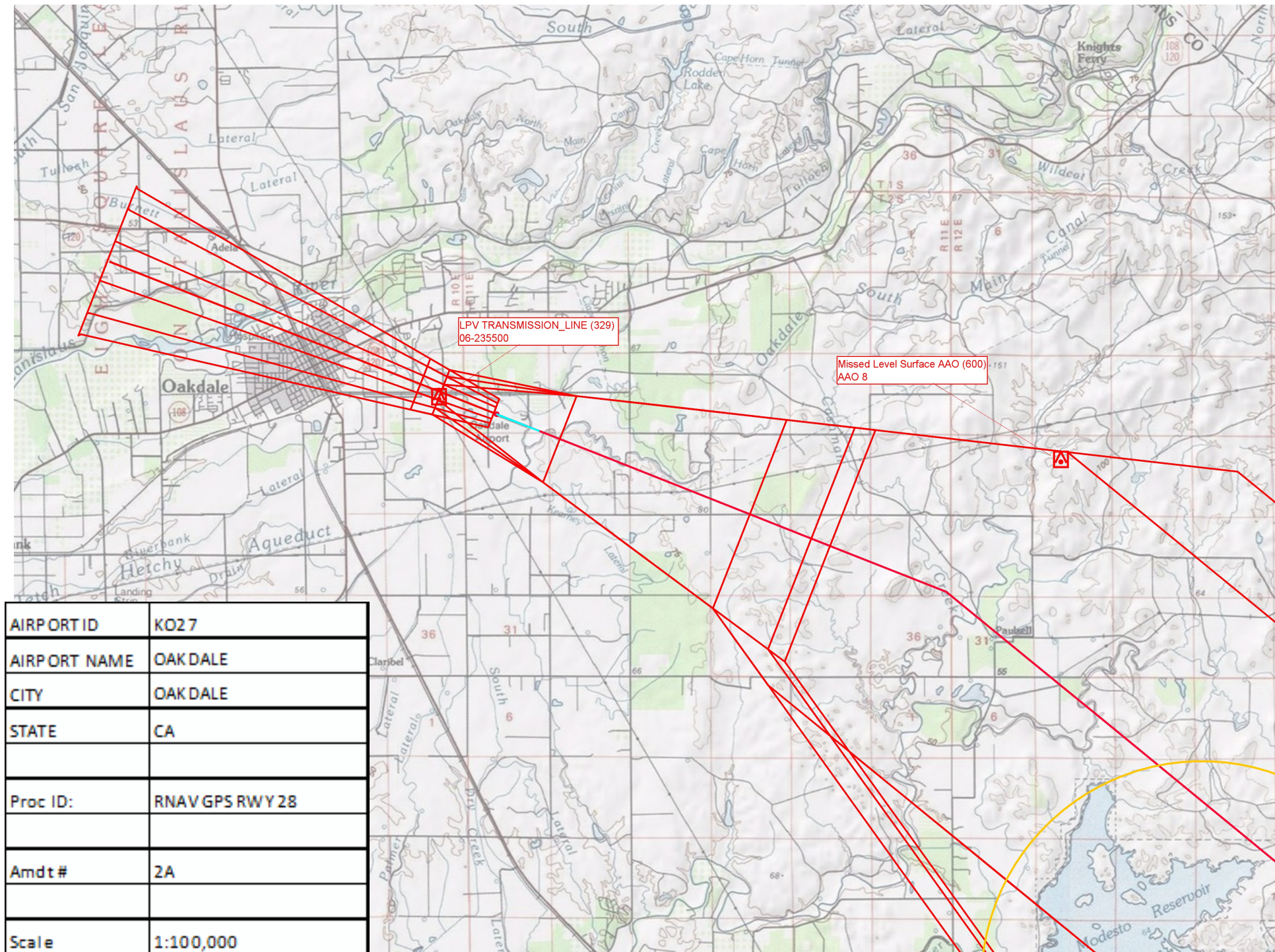
37°45'N-120°48'W

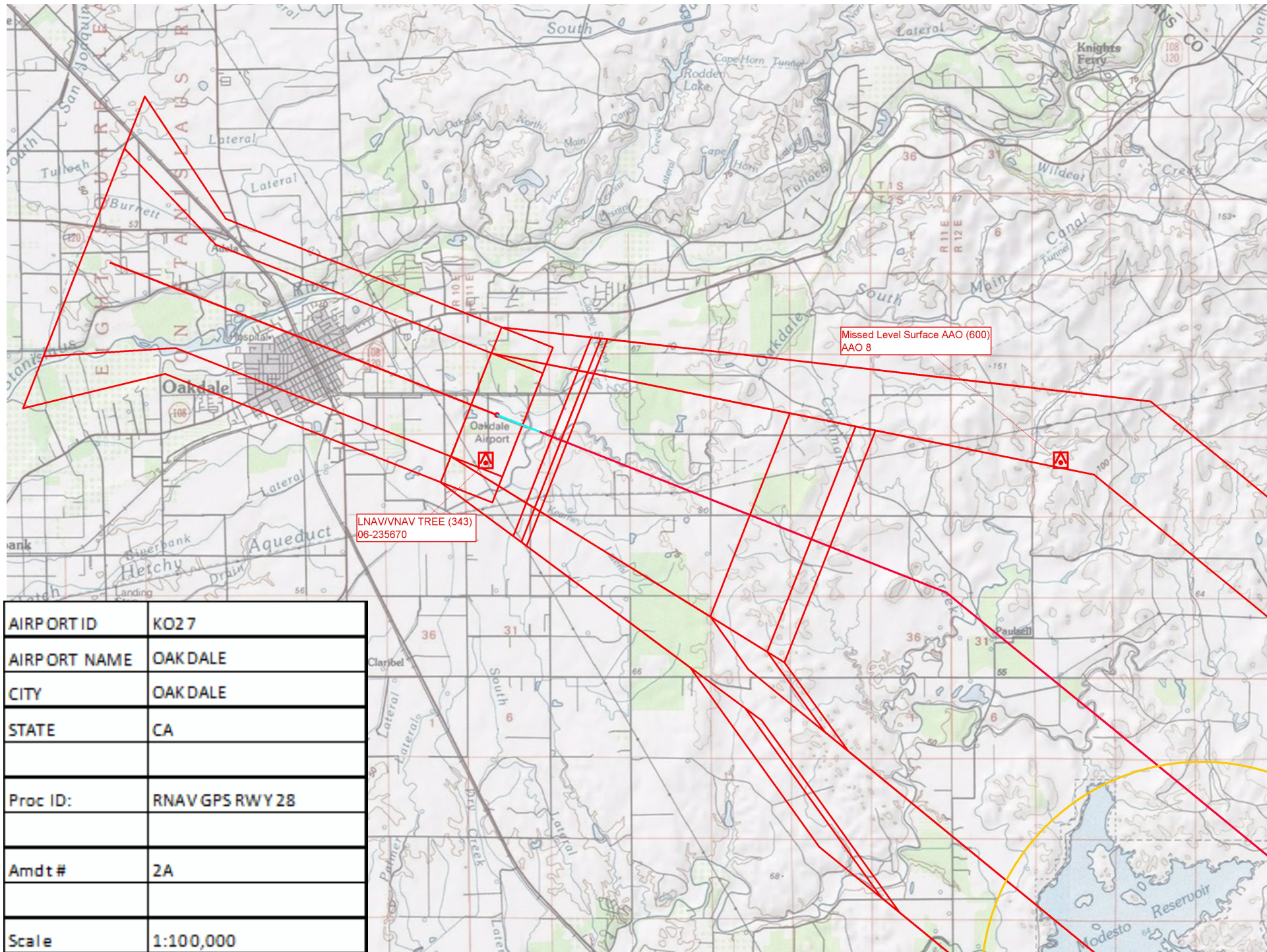
RNAV (GPS) RWY 10

OAKDALE (O27)

AIRPORT ID	KO27
AIRPORT NAME	OAK DALE
CITY	OAK DALE
STATE	CA
Proc ID:	RNAV GPS RWY 28
Amdt #	2A
Scale	1:100,000







AIRPORT ID	KO27
AIRPORT NAME	OAK DALE
CITY	OAK DALE
STATE	CA
Proc ID:	RNAV GPS RWY 28
Amdt #	2A
Scale	1:100,000