

Flight Procedures Cover Page	Task Action: P-NOTAM	Task Type: IAP	Estimated Chart Date: 08/12/2021	APWS Task ID: 666D6C1CDB084E908273243956C80C91	APWS Project ID: A5B3C0CBBDF54F1EAAFFE74C961D4330
Procedure: RNAV (GPS) RWY 6 ORIG-C		Enroute: NO	Specialist: Copeland, Guy		Agreement Number:
Airport ID: KBPG			Airport City: BIG SPRING		State: TX
Facility ID:	Facility Type:	Flight Inspection Remark Type:			
<div>Procedure Comments: P-NOTAM</div> <div>PROCESSED IAW AIRCRAFT OPERATIONS GROUP (AJW-33) MEMO, OCTOBER 3, 2018, SUBJECT: FLIGHT INSPECTION REVIEW NOT REQUIRED.</div> <div>CONTACT: DAVID TEFFETELLER 202-267-5177</div> <div><div>QUALITY 45 CHECKED</div><div>QUALITY 26 CHECKED</div></div>					

OLD

BIG SPRING, TEXAS

AL-47 (FAA)

20142

WAAS CH 86332 W06A	APP CRS 060°	Rwy Idg TDZE Apt Elev	4601 2563 2573
--	------------------------	-----------------------------	---

RNAV (GPS) RWY 6

BIG SPRING McMAHON-WRINKLE (BPG)

RNP APCH.

⚠ For uncompensated Baro-VNAV systems, LNAV/VNAV NA below -20°C or above 54°C. When local altimeter setting not received, use Midland Intl Air and Space Port altimeter setting and increase all DA 130 feet, all MDA 140 feet, and increase LPV all Cats visibility 3/8 mile and LNAV/VNAV all Cats visibility 1/2 mile. Baro-VNAV and VDP NA with Midland Intl Air and Space Port altimeter setting.

MISSED APPROACH: Climb to 4600 direct ZARDU and hold.

AWOS-3
118.025

FORT WORTH CENTER
133.7 350.2

UNICOM
122.8 (CTAF) **📶**

Procedure NA for arrivals on BGS VORTAC
airway radials 128 CW 275.

BIG SPRING
BGS

(IAF)
TARZN

4600 NoPT
(14.6)

4600 to ZVIGU
213°
(20.1)

5 NM

060°
240°
ZARDU

(FAF)
HIKUG

JOSDU
1.7 NM to
RW06

2673±
2634±

2860
3270

3255
3303

3232

MSA RW06 25 NM
4700

(IF/IAF)
ZVIGU

4200
060°
(6.7)

060°
240°
5 NM

(IAF)
JOKES

4600 NoPT
014°
(15.5)

Procedure NA for arrivals at
JOKES on V68 southeast bound.

5 NM
Holding Pattern
ZVIGU

4600
240°
060°

HIKUG
4200
060°
4200

JOSDU
1.7 NM to
RW06

4600

ZARDU

*LNAV only.

*1 NM to
RW06

RW06

3120

CATEGORY

A

B

C

D

LPV DA

2763-3/4 200 (200-3/4)

NA

LNAV/VNAV DA

2813-3/4 250 (300-3/4)

NA

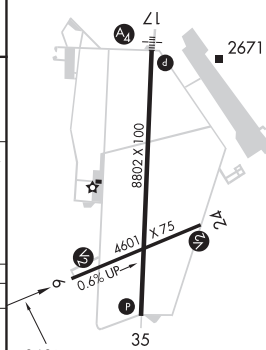
LNAV MDA

2900-1 337 (400-1)

NA

ELEV 2573

TDZE 2563



MRL Rwy 6-24 and 17-35 **📶**

BIG SPRING, TEXAS
Orig-B 07NOV19

32°13'N-101°31'W

BIG SPRING McMAHON-WRINKLE (BPG)
RNAV (GPS) RWY 6

SC-2, 25 FEB 2021 to 25 MAR 2021

SC-2, 25 FEB 2021 to 25 MAR 2021