

Flight Procedures Cover Page	Task Action: FLIGHT CHECK	Task Type: IAP	Estimated Chart Date: 04/20/2023	APWS Task ID: 6628EDE7BBB144D2B9850D2969BBD2BD	APWS Project ID: AE56C861AD414DCF868DE254A8140357
Procedure: ILS Y OR LOC RWY 28 AMDT 11C		Enroute: NO	Specialist: Johnson, Daniel		Agreement Number:
Airport ID: KMGM			Airport City: MONTGOMERY		State: AL
Facility ID: DLV	Facility Type: ILS	Flight Inspection Remark Type: New FC Slot			
<div>Procedure Comments: UTILIZED ACTIVE AIRNAV DATA FOR KMGM RWY 28. PROCESSED IAW TECHNICAL SUPPORT GROUP (AJF-17) MEMO DATED 07/07/2021 GUIDANCE FOR PROCEDURAL CHANGES REQUIRING FLIGHT INSPECTION/VALIDATION CHANGED SHADY FROM INTERSECTION TO DME FIX. CONTACT ALLAN WILL: AJV-A423 , 405-954-6103</div> <div><div>Digitally signed by <b>JASON KRETSCHMER</b> Dec 23, 2022</div><div><div>QUALITY 25 CHECKED</div><div>QUALITY 15 CHECKED</div></div></div>					

<b>FIPC BASIC FORM</b>							
<b>PROCEDURE:</b> ILS Y OR LOC RWY 28 AMDT 11C			<b>AIRPORT NAME:</b> MONTGOMERY RGNL (DANNELLY		<b>AIRPORT ID:</b> KMGM	<b>SPECIAL CONTROL NO:</b> AP-12-184-22	
<b>FAC ID:</b> DLV		<b>CITY:</b> MONTGOMERY			<b>ST:</b> AL	<b>ORIG CHART DATE:</b> 04/20/2023	
<b>DFL TYPE:</b> PROC/A	<b>THIRD PARTY:</b> <input type="checkbox"/> YES	<b>EST. TIME ON SITE:</b> 0.4	<b>REIMB. NUMBER:</b>		<b>PTS TASK ID:</b> 6628EDE7BBB144D2B9850D2969BBD2BD		
<b>PREFLIGHT NOTES</b>							
<b>REVIEWER:</b> robert e williams					<b>DATE:</b> 01/04/2023		
<b>COMMENTS:</b>					<b>CHECK ONE:</b>		
					<input type="checkbox"/> FLT CK REQ <input checked="" type="checkbox"/> NFCR <input type="checkbox"/> REJECT		
							<b>YES</b>
					<b>CPV COMPLETE?</b>		<b>X</b>
<b>PROCEDURE RESULTS</b>							
<b>INSPECTION DATE:</b> 01/05/2023		<b>CREW #:</b> VN426	<b>N #:</b>	<b>INSTRUMENT PROCEDURE STATUS:</b> <input checked="" type="checkbox"/> SAT <input type="checkbox"/> SAT W/CHANGES <input type="checkbox"/> UNSAT		<b>ARINC CODING:</b> <input type="checkbox"/> SAT <input type="checkbox"/> SAT/GOLD <input type="checkbox"/> UNSAT	
<b>FLIGHT INSPECTOR SIGNATURE:</b> robert e williams @ 01/04/2023 21:14			<b>PRINTED NAME:</b> WILLIAMS, ROBERT EMIL			<b>NOTAM INITIATED?</b> <input type="checkbox"/> YES <input checked="" type="checkbox"/> NO	
<b>FLIGHT INSPECTOR REMARKS:</b> Montgomery, AL, Montgomery RGNL (Dannelly FLD), ILS or LOC Y RWY 28 AMDT 11C. SAT Ground evaluation of amended procedure to include admin changes to procedure due to surveys and new criteria. Removed TGE VOR from fix makeups due to VOR MON. None of the changes made in amendment 11C require airborne evaluation. Procedure as amended is Satisfactory.							
<b>IN-FLIGHT OBSTACLE REPORT</b>							
<b>OBSTRUCTION ID #:</b>	<b>COORDINATES OR LOCATION:</b>		<b>GNSS ALTITUDE (MSL):</b>		<b>BAROMETRIC ALTITUDE (MSL):</b>		<b>HEIGHT ABOVE GROUND LEVEL:</b>

LOC I-DLV	APP CRS	Rwy Idg	<b>9020</b>
<b>108.5</b>	<b>277°</b>	TDZE	<b>197</b>
		Apt Elev	<b>221</b>

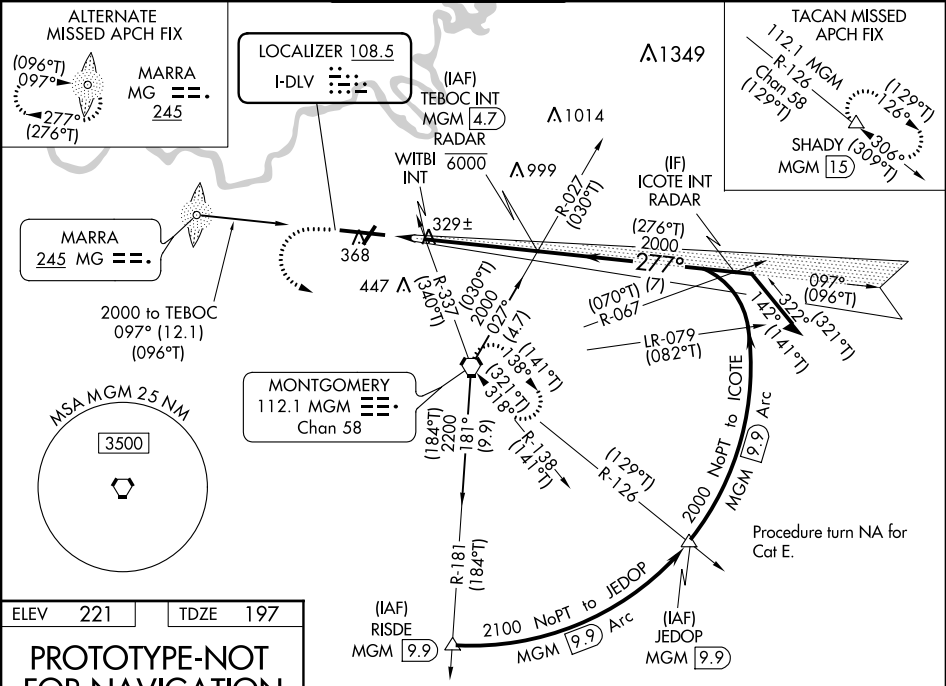
ILS Y or LOC RWY 28  
MONTGOMERY RGNL (DANNELLY FLD) (MGM)

**⚠** For inop ALS, increase S-ILS 28 Cat E visibility to ¾ SM; S-LOC 28 Cat C/D/E visibility to 1 ¾ SM and increase WITBI fix minimums S-LOC 28 Cat E visibility to 1 ¾ SM. Circling for Cat E NA north of Rwy 10-28.

**MALSR**

**MISSED APPROACH:** Climb to 700 then climbing left turn to 3000 direct MGM VORTAC and hold, continue climb-in-hold to 3000. (TACAN aircraft continue climb to 3500 on MGM VORTAC R-126 to SHADY/MGM 15 DME and hold SE, RT, 306° inbound).

ATIS <b>120.675</b>	MONTGOMERY APP CON ★ <b>124.0 363.025</b>	DANNELLY TOWER ★ <b>119.7 (CTAF) 0 360.85</b>	GND CON <b>121.7 348.6</b>	CLNC DEL <b>118.3 270.3</b>	UNICOM <b>122.95</b>
------------------------	--	--	-------------------------------	--------------------------------	-------------------------




ELEV 221	TDZE 197
----------	----------

**PROTOTYPE-NOT FOR NAVIGATION**

**REIL Rwy 3**  
**MIRL Rwy 3-21**  
**HIRL Rwy 10-28**

**FAF to MAP 5.5 NM**

Knots	60	90	120	150	180
Min:Sec	5:30	3:40	2:45	2:12	1:50

700 ↑	3000 ↖	MGM 					
----------	-----------	--	--	--	--	--	--

AL-2/2 (FAA)

21168

ILS Y or LOC RWY 28  
MONTGOMERY RGNL (DANNELLY FLD) (MGM)

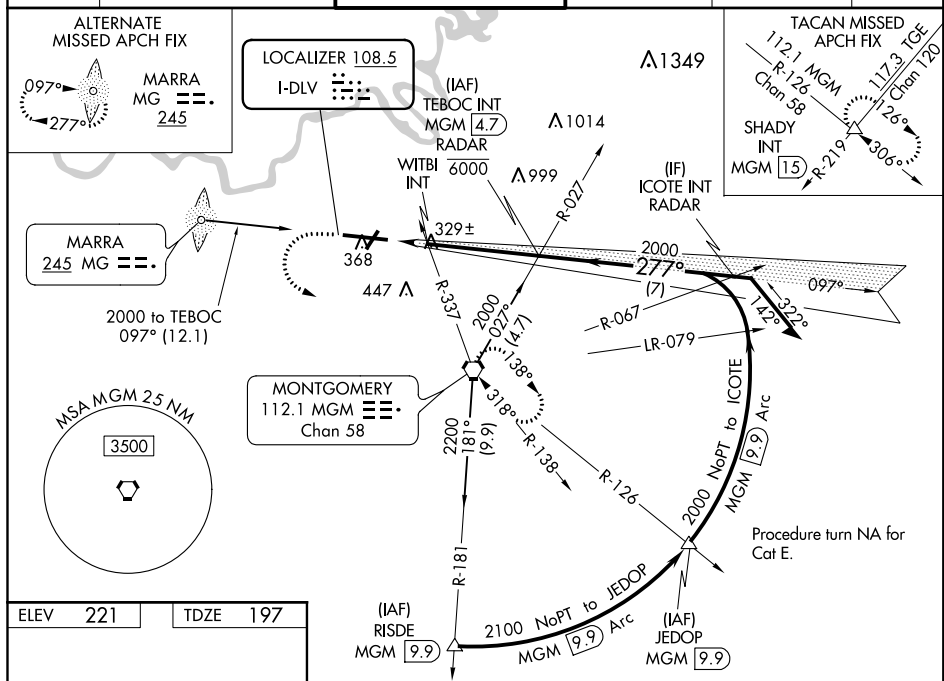
**T** For inop MALS, increase S-ILS 28 Cat E visibility to  $\frac{3}{4}$  mile; increase S-LOC 28 Cats C/D/E visibility to  $1\frac{3}{4}$  mile; increase WJTBI fix minimums S-LOC 28 Cat E visibility to  $1\frac{1}{4}$  mile. Circling for Cat E NA north of Rwy 10-28.

MALSR



**MISSED APPROACH:** Climb to 700 then climbing left turn to 3000 direct MGM VORTAC and hold, continue climb-in-hold to 3000 (TACAN aircraft continue climb to 3500 on MGM VORTAC R-126 to SHADY INT/MGM 15 DME and hold SE, RT, 306° inbound).

ATIS 120.675	MONTGOMERY APP CON ★ 124.0 363.025	DANNELLY TOWER ★ 119.7 (CTAF) 0 360.85	GND CON 121.7 348.6	CLNC DEL 118.3 270.3	UNICOM 122.95
-----------------	---------------------------------------	---	------------------------	-------------------------	------------------

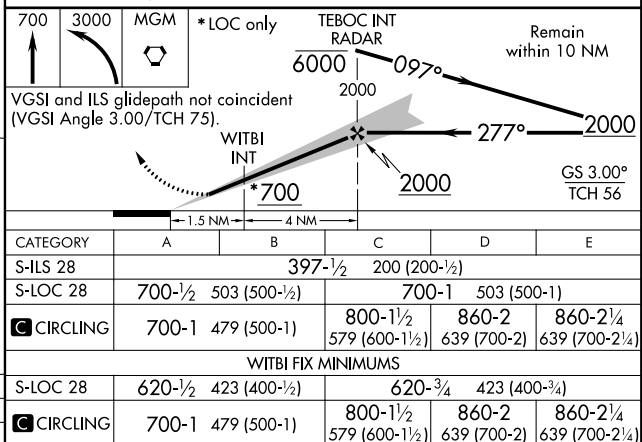


REIL Rwy 3 **1**

MIRL Rwy 3-21

HIRL Rwy 10-28

FAF to MAP 5.5 NM					
Knots	60	90	120	150	180
Min:Sec	5:30	3:40	2:45	2:12	1:50



MONTGOMERY RGNL (DANNELLY FLD) (MGM)

32°18'N-86°24'W

ILS Y or LOC RWY 28

SE-4, 08 SEP 2022 to 06 OCT 2022