

Flight Procedures Cover Page	Task Action: P-NOTAM	Task Type: IAP	Estimated Chart Date: 10/08/2020	APWS Task ID: 660CE7C7F94940FF9DD30DAB41BD5AC2	APWS Request ID: 73AA67B3B7A64771BFD3EC4C2FD16221
Procedure: VOR-A AMDT 10A		Enroute: NO	Specialist: Roslewski, Russell		Agreement Number:
Airport ID: KPDX	Airport Name: PORTLAND INTL		Airport City: PORTLAND		State: OR
Facility ID:	Facility Type:	Flight Inspection Remark Type:			

Procedure Comments:
P-NOTAM

New circling areas based on existing procedure at the airport – ILS OR LOC RWY 28R, Amdt 17.

Processed IAW Aircraft Operations Group (AJW-33) Memo, October 3, 2018, Subject: Flight Inspection Review Not Required.

Contact Jason Kretschmer, 405-954-4019

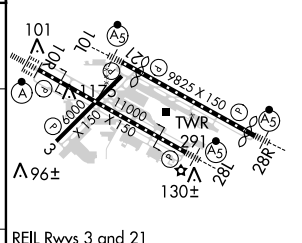
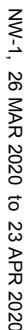
J ZEDER 07/258/2020



VOR-A
PORTLAND INTL (PDX)

T
A

CPDLC



TDZ/CL Rwy 10R MIRL Rwy 3-21 HIRL Rwy 10L-28R and 10R-28L					
FAF to MAP 9.1 NM					
Knots	60	90	120	150	180
Min:Sec	9:06	6:04	4:33	3:38	3:02

45°35'N-122°36'W

PORTLAND INTL (PDX)
VOR-A

NW-1, 26 MAR 2020 to 23 APR 2020

