

Flight Procedures Cover Page	Task Action: Abbreviated Amendment	Task Type: IAP	Estimated Chart Date: 09/08/2022	APWS Task ID: 6607FC795FC34FFE9757D0AF868E6AAC	APWS Project ID: 65CF053FA01D48F89C224C57D0CCAC3A
Procedure: RNAV (GPS) RWY 31 AMDT 2B		Enroute: NO	Specialist: Thibodeaux, Charles		Agreement Number:
Airport ID: KRST			Airport City: ROCHESTER		State: MN
Facility ID:	Facility Type:	Flight Inspection Remark Type:			
<p>Procedure Comments: PENDING DATA USED.</p> <p>AIRPORT MAGVAR CHANGED FROM 1E/2005 TO 1W/2025</p> <p>PROCESSED IAW TECHNICAL SUPPORT GROUP (AJF-17) MEMO DATED 07/07/2021 GUIDANCE FOR PROCEDURAL CHANGES REQUIRING FLIGHT INSPECTION/VALIDATION</p> <p>CONTACT JASON KRETSCHMER, AJV-A421, 405-954-4019.</p> <p>08/02/22: THIS IS A CORRECTED COPY OF THE FORM APPROVED ON 08/01/22. 1. ADDED PAT 1 TO THE RNAV (GPS) RWY 31 AT KRST IN FIX USE.</p> <p style="text-align: center;"><i>Digitally signed by</i> <b>JASON KRETSCHMER</b> Aug 02, 2022</p>					

QUALITY  
24  
CHECKED

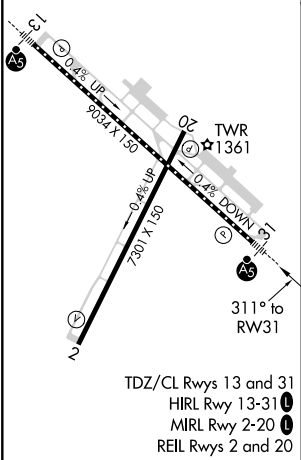
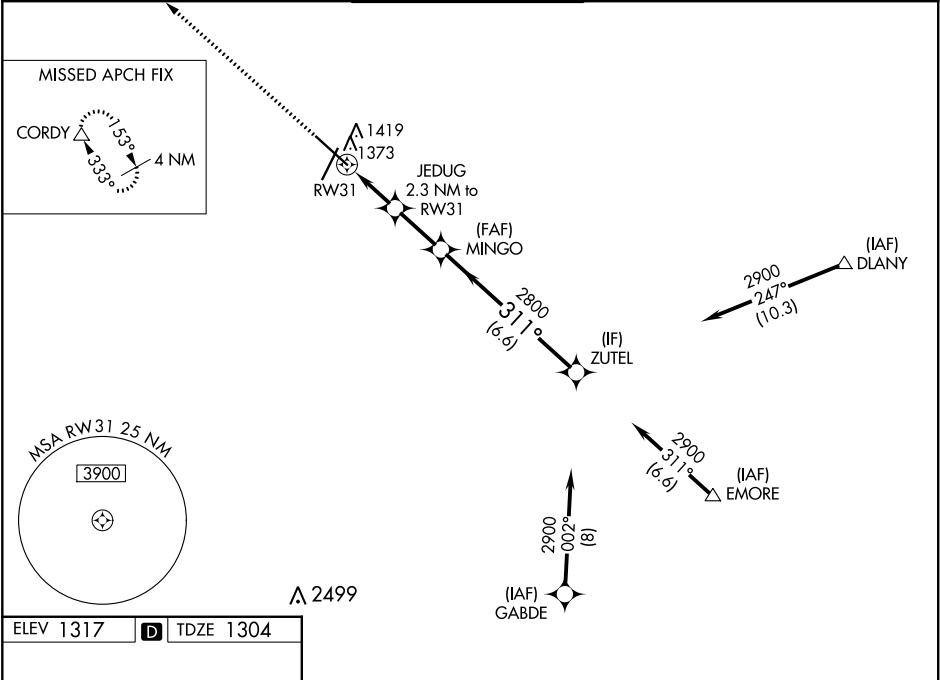
QUALITY  
38  
CHECKED

WAAS CH <b>49028</b> <b>W31A</b>	APP CRS <b>311°</b>	Rwy Idg TDZE <b>1304</b> Apt Elev <b>1317</b>	<b>9033</b>
--	------------------------	---	-------------

RNAV (GPS) RWY 31  
ROCHESTER INTL (RST')

RNP APCH.	MALSR	MISSED APPROACH: Climb to 3000 direct CORDY and hold.
ASR		
For uncompensated Baro-VNAV systems, LNAV/VNAV NA below -20°C or above 54°C. For inop ALS, increase LNAV/VNAV all Cats visibility to RVR 4500, increase LNAV Cat C/D visibility to RVR 5500.		

ATIS <b>120.5</b>	ROCHESTER APP CON* <b>119.8 251.125</b>	ROCHESTER TOWER* <b>118.3 (CTAF) 257.8</b>	GND CON <b>121.9</b>	UNICOM <b>122.95</b>
----------------------	--	---	-------------------------	-------------------------



3000	CORDY	ZUTEL
*LNAV only.		
RW31	JEDUG 2.3 NM to RW31	MINGO 2800
1 NM	1.3 NM	2.2 NM
2100*	2800	2900
GP 3.00° TCH 56		
CATEGORY	A	B
LPV DA	1504/18	200 (200-½)
LNAV/VNAV DA	1554/24	250 (300-½)
LNAV MDA	1640/24	336 (400-½)
CIRCLING	1720-1	1780-1
	403 (500-1)	463 (500-1)
	1900-1½	1900-2
	583 (600-1½)	583 (600-2)