

Flight Procedures Cover Page	Task Action: P-NOTAM	Task Type: IAP	Estimated Chart Date: 07/15/2021	APWS Task ID: 658F156F9B4D404D9766F6ED99917F5D	APWS Project ID: C202C08CCD444CE4AC559C98DE4885D8
Procedure: RNAV (GPS) RWY 29L AMDT 1B		Enroute: NO	Specialist: Lafferty, James		Agreement Number:
Airport ID: KTUS			Airport City: TUCSON		State: AZ
Facility ID:	Facility Type:	Flight Inspection Remark Type:			
<p>Procedure Comments:</p> <p>P-NOTAM</p> <p>This Cancels FDC 0/0611</p> <p>Order 8260.3, chapter 2, New Circling Criteria Applied</p> <p>Contact Dave Teffeteller at 202-267-5177</p>					



TUCSON, ARIZONA

OLD

4 (FAA)

20086

APP CRS	Rwy Idg	6998
303°	TDZE	2629
	Apt Elev	2643

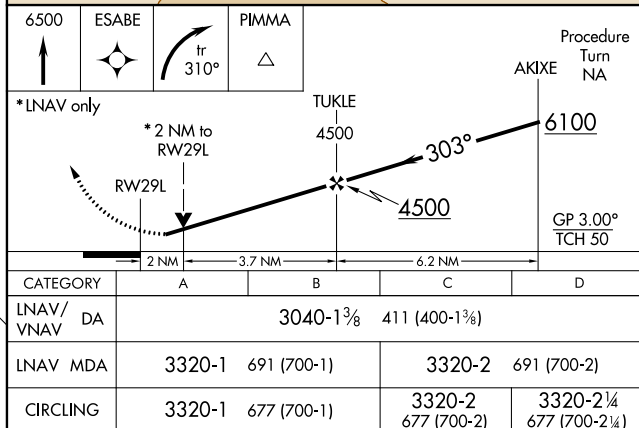
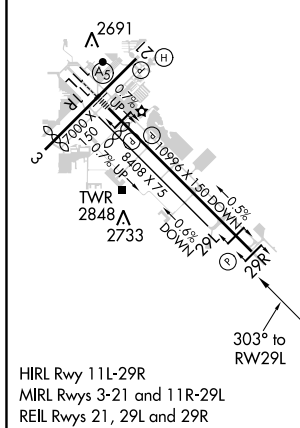
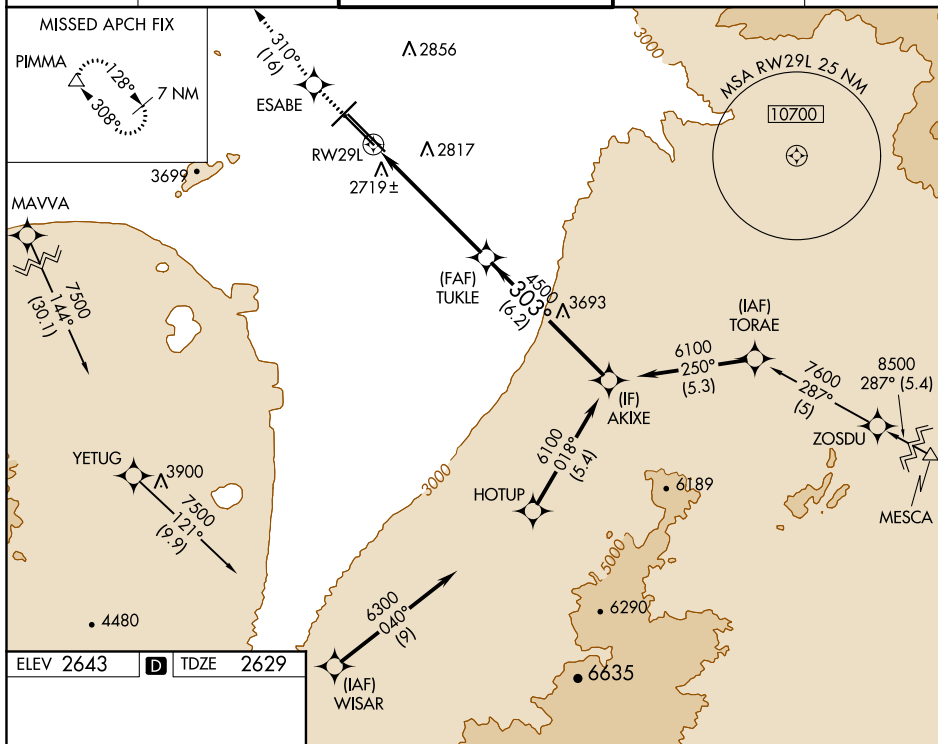
RNAV (GPS) RWY 29L

TUCSON INTL (TUS)

⚠ For uncompensated Baro-VNAV systems, LNAV/VNAV NA below -20°C (-4°F) or above 27°C (80°F). DME/DME RNP-0.3 NA. Helicopter visibility reduction below $\frac{3}{4}$ SM NA.

MISSED APPROACH: Climb to 6500 direct ESABE then climbing right turn on track 310° to PIMMA and hold.

ATIS 123.8 279.65	TUCSON APP CON 119.4 318.1	TUCSON TOWER 118.3 257.8	GND CON 124.4 348.6	CLNC DEL 126.65 326.2
-----------------------------	--------------------------------------	------------------------------------	-------------------------------	---------------------------------



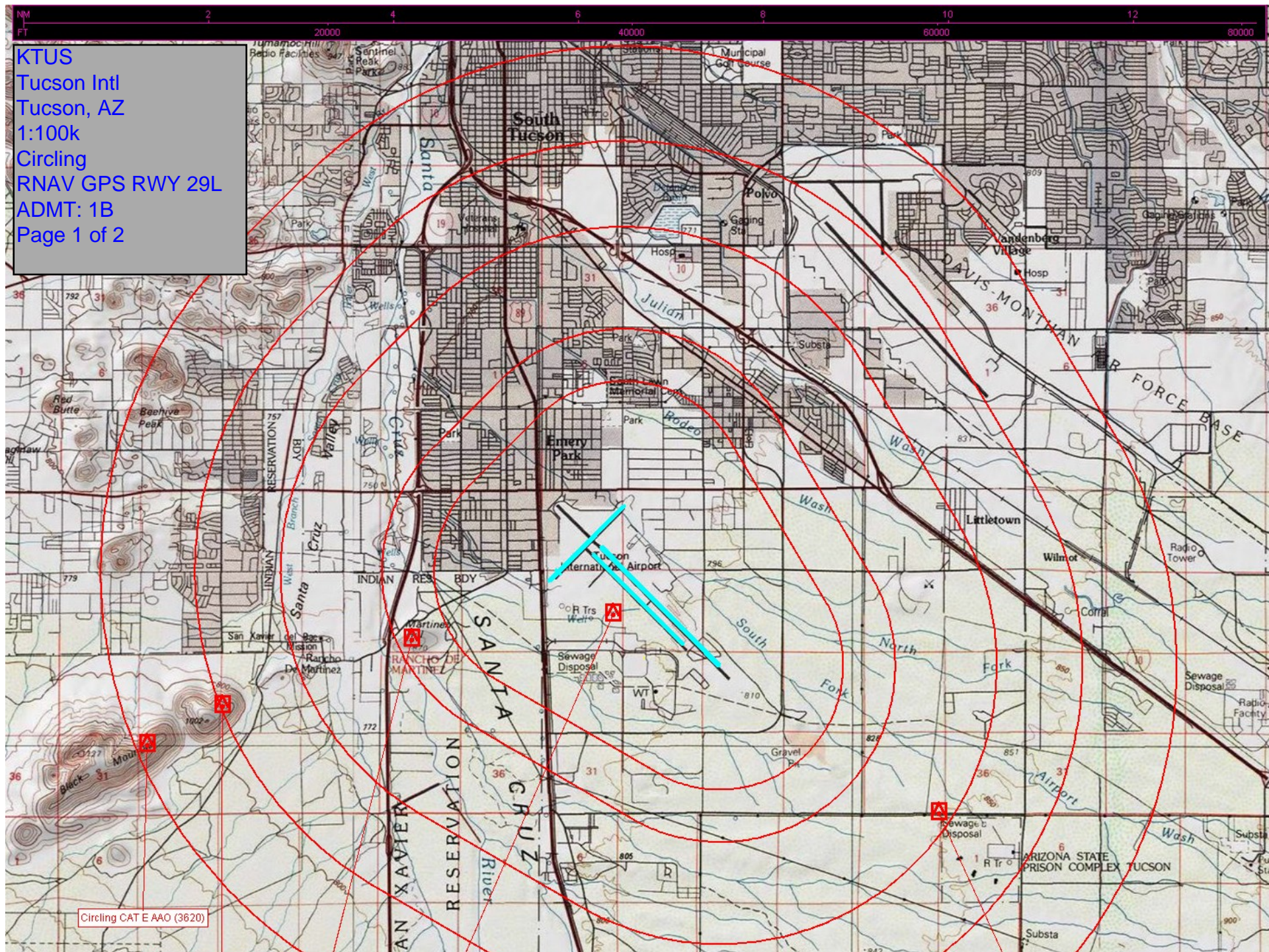
TUCSON, ARIZONA
Amdt 1A 21AUG14

32°07'N-110°56'W

TUCSON INTL (TUS)
RNAV (GPS) RWY 29L

SW-4, 23 APR 2020 to 21 MAY 2020

KTUS
Tucson Intl
Tucson, AZ
1:100k
Circling
RNAV GPS RWY 29L
ADMT: 1B
Page 1 of 2



Circling CAT E AAO (3620)

