

DME DME Assessment Results for DNKIN1 path TRVLL_AIRBL

Results Summary

Flyability:	Completed
DME/DME:	Completed - No Critical DMEs
Name:	William CTR Roth
Project File:	C:\Work Folder\STARs-SIDs Projects\SAT\Publications Docs CD 20230823\STARs\DNKIN\20230405\dme\KSAT DNKIN 202300405 DME.tgs
Output File:	C:\Work Folder\STARs-SIDs Projects\SAT\Publications Docs CD 20230823\STARs\DNKIN\20230405\dme\KSAT [IFPA] DNKIN1 20230405_1403 CDT\TRVLL_AIRBL\KSAT DNKIN1 RNAV STAR TRVLL AIRBL 20230405_1403 CDT.pdf
Procedure Name:	DNKIN1
Software: DmeDmePlugin:	7.0.2
Date/Time:	04/05/2023 14:03 CDT
Databases:	DTED Level 0 MAX

Failures

No Failures

Warnings

No Warnings

Informational

No Informational

Notes For Flight Check

None

Flight Plan

Name	Type	Lat/Lon	Altitude (ft)	VNAV Mode	Ground Speed (kts)	Turn Type	Leg Type
TRVLL	WP	N30° 35' 52.41", W099° 49' 02.51"	9000	VNAV	230	FLY_BY	TF
AIRBL	WP	N29° 55' 20.25", W099° 12' 51.52"	9000	VNAV	230	FLY_BY	TF

Flyability

Flight Type:	RNAV_STAR
Selected Airport:	KSAT [IFPA]
Climb Gradient:	None assigned
Speeds:	200 Ground Speed to 11000 FT
	240 Ground Speed to 18000 FT
	260 Ground Speed to 24000 FT
	340 Ground Speed above 24000 FT
Descent During a Turn:	Allowed
VNAV Mode:	Flight Plan

DME DME Assessment Results for DNKIN1 path TRVLL_AIRBL

DME/DME	
RNP:	RNP 2
Flight Mode:	Manual
Line of Sight (DTED Level 0 Max):	Evaluated
Inertial Drift:	Enabled
Initial Drift:	0.558 NM
INS Drift Rate:	8.0 NM/Hour
Range Mode:	OSV
RNP Edges:	Evaluated
Min DME Range:	3.0 NM
DME Types:	DME, VOR-DME, VORTAC
DME Include Angles:	30 to 150
Critical DMEs:	Allowed
DoD Facilities:	Not included
Foreign Facilities:	Not included
High DMEs:	Included
Low DMEs:	Included
Terminal DMEs:	Included
Flight Check DMEs:	Not selected
Higher Altitudes:	Not Evaluated
Near Maximum Altitude:	Not Evaluated
Automatic ESVs:	Not enabled
Disabled DMEs:	None

DME/DME (Continued)										
DMEs Used										
#	Name	Lat/Lon	MAGVAR	Range	Type	Source	Critical	Status	Time	Distance
1	STV	N30° 12' 24.33", W098° 42' 20.72"	8.0 E	130	H	IFPA	NO	Enabled	43.7 %	43.7 %
2	BWD	N31° 53' 33.30", W098° 57' 26.86"	8.0 E	40	L	IFPA	NO	Enabled	38.3 %	38.3 %
3	LLO	N30° 47' 46.83", W098° 47' 14.60"	8.0 E	40	L	IFPA	NO	Enabled	100 %	100 %
4	JCT	N30° 35' 52.88", W099° 49' 02.93"	8.0 E	130	H	IFPA	NO	Enabled	67.7 %	67.7 %
5	SJT	N31° 22' 29.84", W100° 27' 17.53"	10.0 E	130	H	IFPA	NO	Enabled	62 %	62 %
6	CSI	N29° 55' 20.48", W099° 12' 52.15"	8.0 E	130	H	IFPA	NO	Enabled	71.2 %	71.2 %

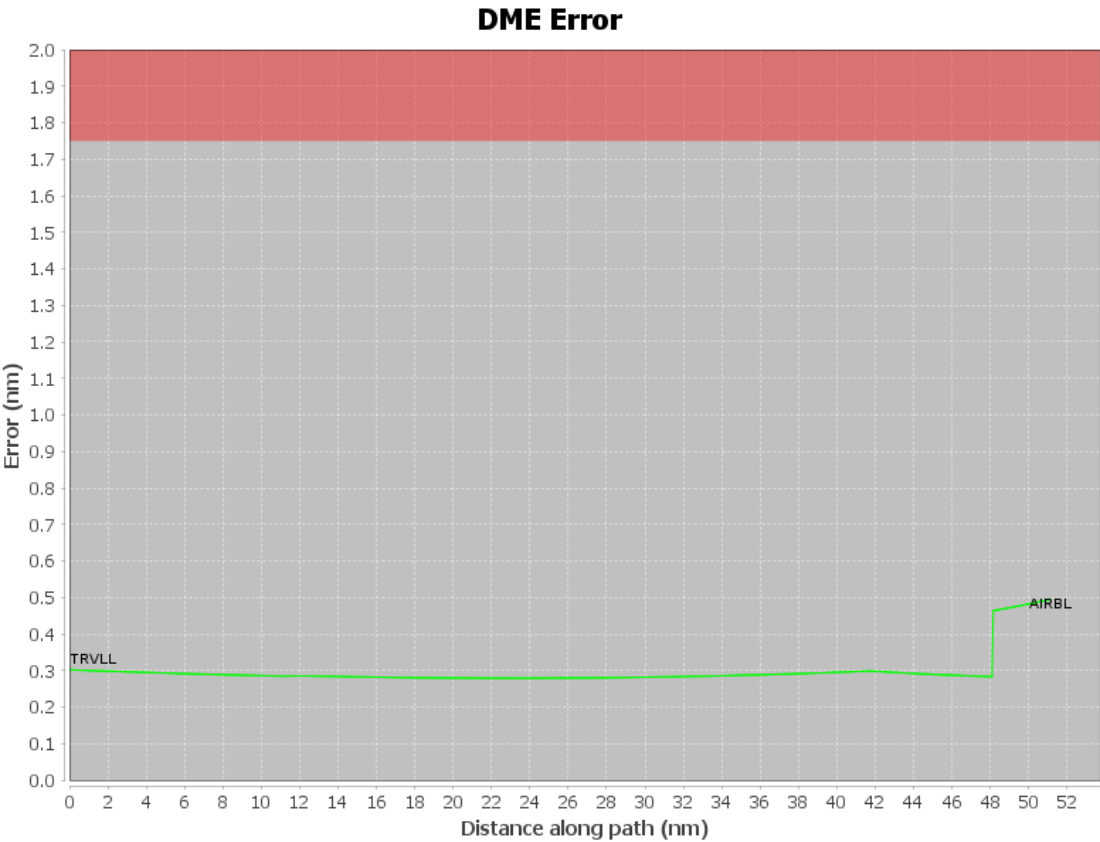
Flight Check DME Selection						
Distance [NM]	Selected DMEs					Alternate
0.0	LLO	SJT	BWD			
5.1	LLO	SJT	JCT	BWD		
11.4	LLO	SJT	CSI	JCT	BWD	
19.7	LLO	CSI	JCT	SJT		
23.8	LLO	JCT	CSI	SJT	BWD	
23.8	LLO	JCT	CSI	SJT		
28.8	LLO	JCT	CSI	SJT	STV	
31.8	LLO	JCT	CSI	STV		
39.8	LLO	CSI	STV			
47.9	LLO	STV				

Inertial Drift Segments			
#	Start Location	End Location	Length [NM]

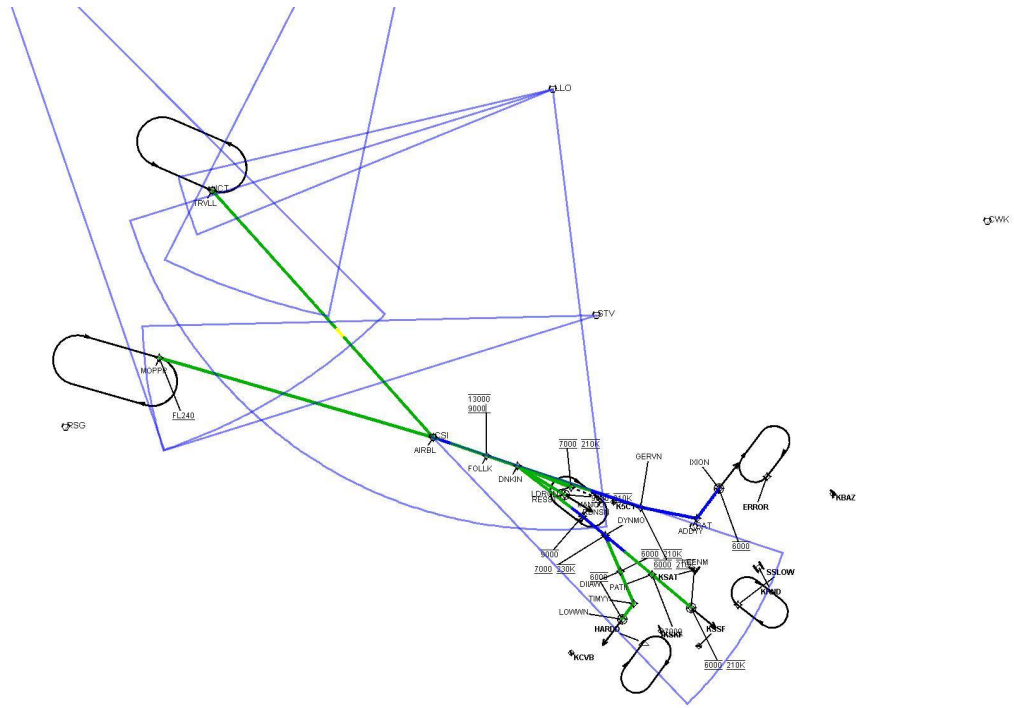
Available DMEs by Waypoints			
Waypoint Before	Waypoint After	DME List	Suggested DMEs
TRVLL	AIRBL	STV, CSI, JCT, SJT, LLO, BWD	

DME DME Assessment Results for DNKIN1 path TRVLL_AIRBL

User Data Files								
#	File Name							
1	UserDMEsKSAT [IFPA] DNKIN1 RNAV STAR_20230118_0735 CST.udt							
User DMEs								
#	Name	Lat/Lon	MAGVAR	Range	Elevation [ft]	Frequency	Replaces	Status
1	CSI FAA 766740-17 CSI [IFPA]	N29° 55' 20.48", W099° 12' 52.15"	8.0 E	130	2079.3	117.5	CSI FAA 766740-17	
ESV:		Bearing [True]: 112.0° to 140.0° Bearing [Mag]: 104.0° to 132.0°				Arc Distance: Out to 57.0 NM Altitude: 4000.0 to 18000.0 ft		
2	LLO FAA 700387-15 LLO [IFPA]	N30° 47' 46.83", W098° 47' 14.60"	8.0 E	40	1206.6	108.2	LLO FAA 700387-15	
ESV:		Bearing [True]: 177.0° to 257.0° Bearing [Mag]: 169.0° to 249.0°				Arc Distance: Out to 68.0 NM Altitude: 5000.0 to 18000.0 ft		
3	LLO FAA 700387-018 LLO [IFPA]	N30° 47' 46.83", W098° 47' 14.60"	8.0 E	40	1206.6	108.2	LLO FAA 700387-018	
ESV:		Bearing [True]: 252.0° to 261.0° Bearing [Mag]: 244.0° to 253.0°				Arc Distance: Out to 59.0 NM Altitude: 8900.0 to 19300.0 ft		
4	STV FAA 970146-026 STV [IFPA]	N30° 12' 24.33", W098° 42' 20.72"	8.0 E	130	1530	113.8	STV FAA 970146-026	
ESV:		Bearing [True]: 257.0° to 273.0° Bearing [Mag]: 249.0° to 265.0°				Arc Distance: Out to 70.0 NM Altitude: 8900.0 to 16100.0 ft		
5	BWD FAA 212001-008 BWD [IFPA]	N31° 53' 33.30", W098° 57' 26.86"	8.0 E	40	1574.3	113.55	BWD FAA 212001-008	
ESV:		Bearing [True]: 196.0° to 211.0° Bearing [Mag]: 188.0° to 203.0°				Arc Distance: Out to 102.0 NM Altitude: 8900.0 to 19600.0 ft		
6	SJT FAA 704198-020 SJT [IFPA]	N31° 22' 29.84", W100° 27' 17.53"	10.0 E	130	1886.1	115.1	SJT FAA 704198-020	
ESV:		Bearing [True]: 139.0° to 165.0° Bearing [Mag]: 129.0° to 155.0°				Arc Distance: Out to 89.0 NM Altitude: 8900.0 to 16400.0 ft		

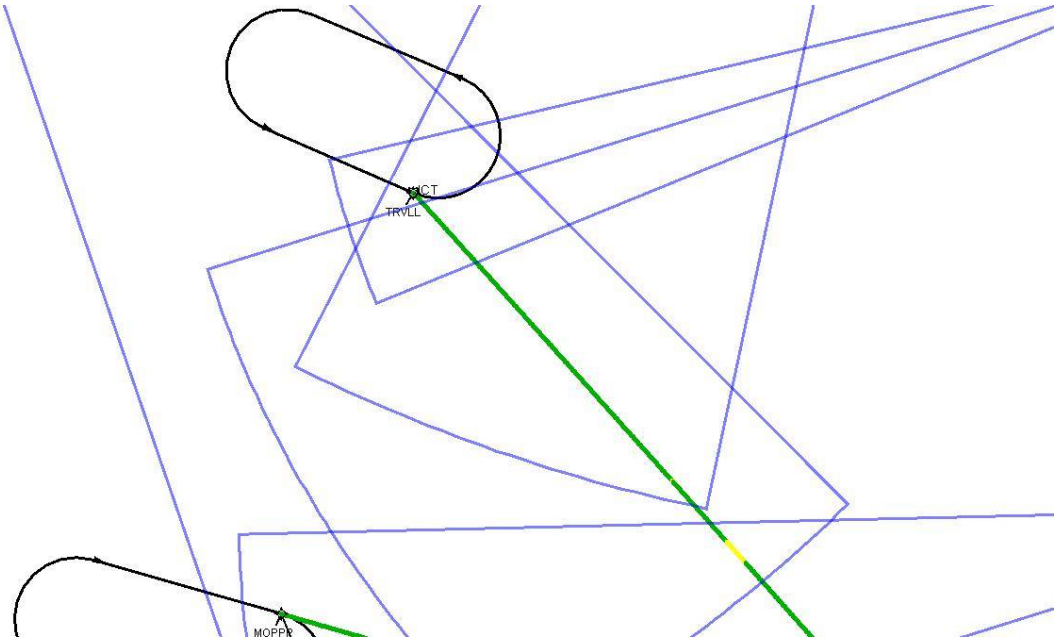


Graphic Depiction 1



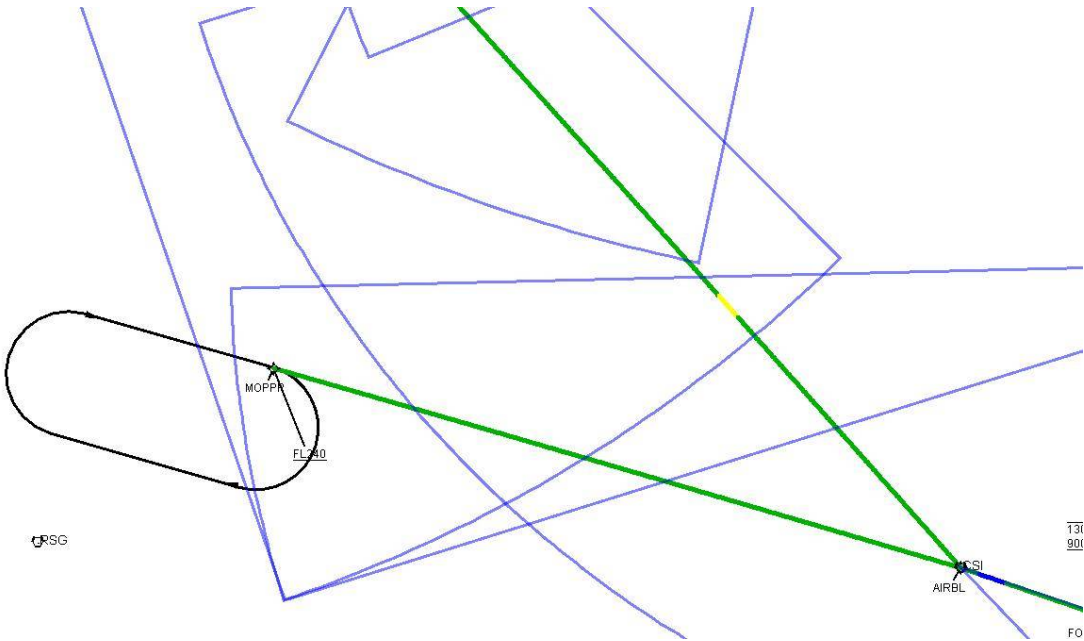
DME DME Assessment Results for DNKIN1 path TRVLL_AIRBL

Graphic Depiction 2



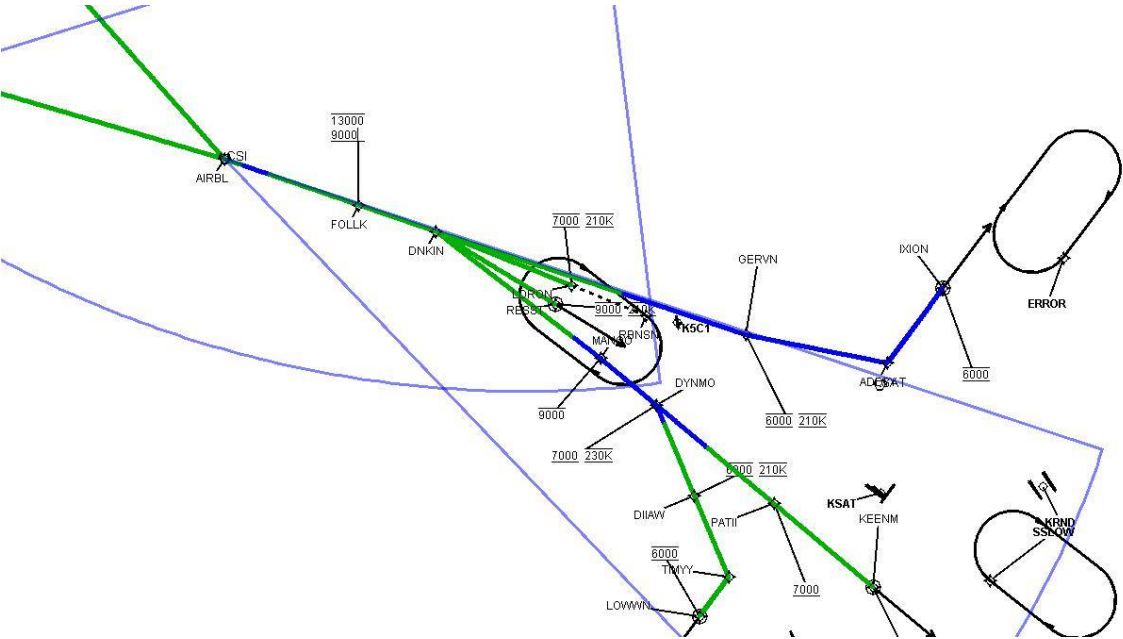
DME DME Assessment Results for DNKIN1 path TRVLL_AIRBL

Graphic Depiction 3

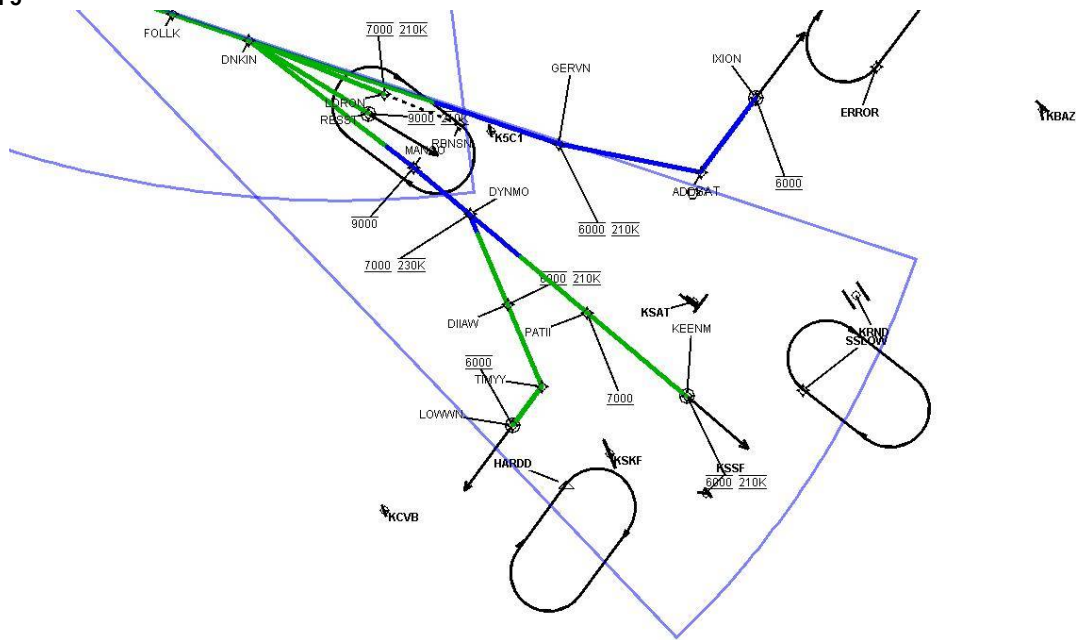


DME DME Assessment Results for DNKIN1 path TRVLL_AIRBL

Graphic Depiction 4



Graphic Depiction 5



DME DME Assessment Results for DNKIN1 path MOPPP_LOWWN

Results Summary

Flyability:	Completed
DME/DME:	Completed - No Critical DMEs
Name:	William CTR Roth
Project File:	C:\Work Folder\STARs-SIDs Projects\SAT\Publications Docs CD 20230823\STARs\DNKIN\20230405\dme\KSAT DNKIN 202300405 DME.tgs
Output File:	C:\Work Folder\STARs-SIDs Projects\SAT\Publications Docs CD 20230823\STARs\DNKIN\20230405\dme\KSAT [IFPA] DNKIN1 20230405_1403 CDT\MOPPP_LOWWN\KSAT DNKIN1 RNAV STAR MOPPP LOWWN 20230405_1403 CDT.pdf
Procedure Name:	DNKIN1
Software: DmeDmePlugin:	7.0.2
Date/Time:	04/05/2023 14:03 CDT
Databases:	DTED Level 0 MAX

Failures

No Failures

Warnings

No Warnings

Informational

No Informational

Notes For Flight Check

None

Flight Plan

Name	Type	Lat/Lon	Altitude (ft)	VNAV Mode	Ground Speed (kts)	Turn Type	Leg Type
MOPPP	WP	N30° 10' 34.24", W100° 00' 27.33"	9000	VNAV	230	FLY_BY	TF
AIRBL	WP	N29° 55' 20.25", W099° 12' 51.52"	9000	VNAV	230	FLY_BY	TF
FOLLK	WP	N29° 51' 56.28", W099° 03' 35.41"	9000	VNAV	230	FLY_BY	TF
DNKIN	WP	N29° 49' 59.32", W098° 58' 17.60"	5000	VNAV	230	FLY_BY	TF
MANOO	WP	N29° 41' 28.65", W098° 47' 16.93"	5000	VNAV	230	FLY_BY	TF
DYNMO	WP	N29° 38' 21.67", W098° 43' 33.24"	5000	VNAV	230	FLY_BY	TF
DIIAW	WP	N29° 32' 39.58", W098° 41' 19.54"	5000	VNAV	210	FLY_BY	TF
TIMYY	WP	N29° 27' 29.39", W098° 39' 18.55"	5000	VNAV	210	FLY_BY	TF
LOWWN	WP	N29° 25' 12.67", W098° 41' 33.08"	5000	VNAV	210	FLY_OVER	TF

Flyability

Flight Type:	RNAV_STAR
Selected Airport:	KSAT [IFPA]
Climb Gradient:	None assigned
Speeds:	200 Ground Speed to 11000 FT
	240 Ground Speed to 18000 FT
	260 Ground Speed to 24000 FT
	340 Ground Speed above 24000 FT
Descent During a Turn:	Allowed
VNAV Mode:	Flight Plan

DME DME Assessment Results for DNKIN1 path MOPPP_LOWVN

DME/DME	
RNP:	RNP 2
Flight Mode:	Manual
Line of Sight (DTED Level 0 Max):	Evaluated
Inertial Drift:	Enabled
Initial Drift:	0.558 NM
INS Drift Rate:	8.0 NM/Hour
Range Mode:	OSV
RNP Edges:	Evaluated
Min DME Range:	3.0 NM
DME Types:	DME, VOR-DME, VORTAC
DME Include Angles:	30 to 150
Critical DMEs:	Allowed
DoD Facilities:	Not included
Foreign Facilities:	Not included
High DMEs:	Included
Low DMEs:	Included
Terminal DMEs:	Included
Flight Check DMEs:	Not selected
Higher Altitudes:	Not Evaluated
Near Maximum Altitude:	Not Evaluated
Automatic ESVs:	Not enabled
Disabled DMEs:	None

DME/DME (Continued)										
DMEs Used										
#	Name	Lat/Lon	MAGVAR	Range	Type	Source	Critical	Status	Time	Distance
1	STV	N30° 12' 24.33", W098° 42' 20.72"	8.0 E	130	H	IFPA	NO	Enabled	43.6 %	44 %
2	RSG	N30° 00' 52.57", W100° 17' 59.44"	10.0 E	130	H	IFPA	NO	Enabled	27.3 %	27.5 %
3	LLO	N30° 47' 46.83", W098° 47' 14.60"	8.0 E	40	L	IFPA	NO	Enabled	56.1 %	56.6 %
4	JCT	N30° 35' 52.88", W099° 49' 02.93"	8.0 E	130	H	IFPA	NO	Enabled	28.4 %	28.6 %
5	SAT	N29° 38' 38.51", W098° 27' 40.74"	8.0 E	130	H	IFPA	NO	Enabled	39.4 %	38.9 %
6	SJT	N31° 22' 29.84", W100° 27' 17.53"	10.0 E	130	H	IFPA	NO	Enabled	17.5 %	17.7 %
7	CSI	N29° 55' 20.48", W099° 12' 52.15"	8.0 E	130	H	IFPA	NO	Enabled	80 %	79.8 %

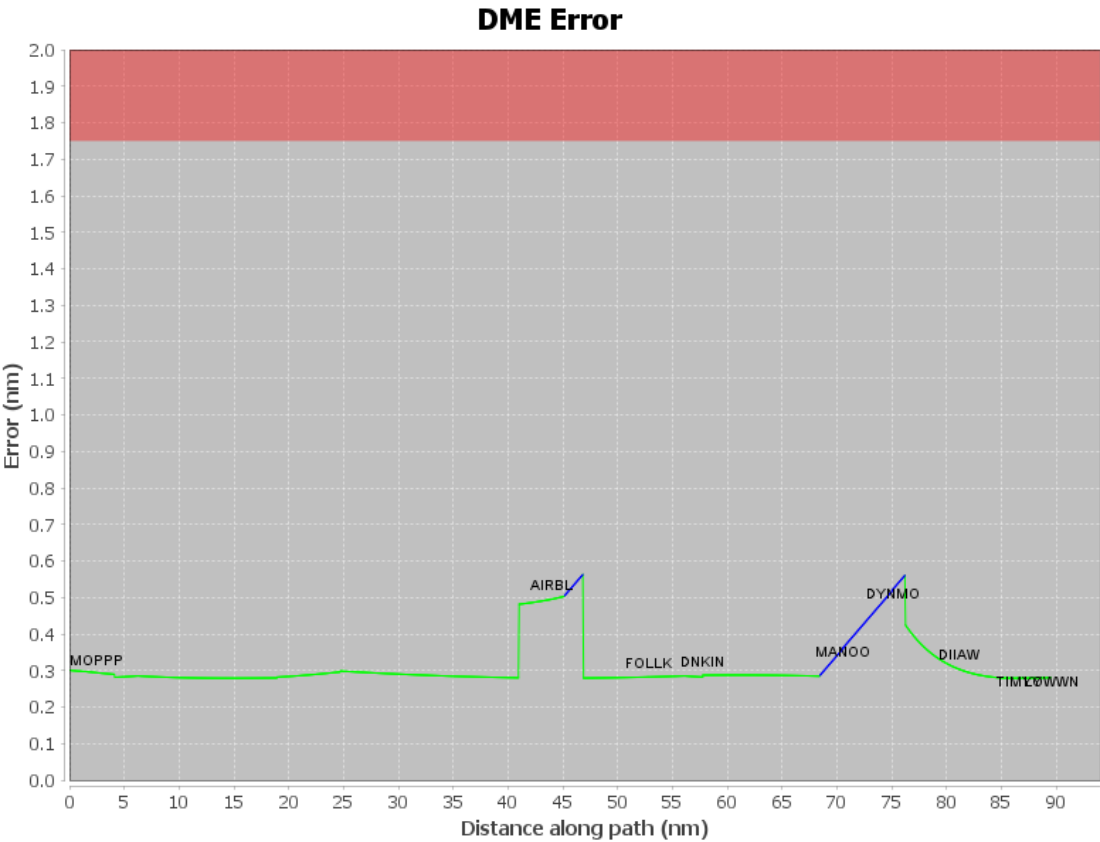
Flight Check DME Selection						
Distance [NM]	Selected DMEs					Alternate
0.0	SJT	RSG	STV	JCT		
4.2	JCT	CSI	STV	SJT	RSG	
15.9	RSG	JCT	STV	LLO	CSI	
19.0	RSG	JCT	LLO	CSI		
24.7	LLO	CSI	JCT			
25.7	LLO	CSI				
35.5	LLO	CSI	STV			
41.0	LLO	STV				
45.2						
46.9	LLO	SAT	STV			
47.0	LLO	CSI	SAT	STV		
57.8	LLO	CSI	SAT			
68.5						
76.3	SAT	CSI				

DME DME Assessment Results for DNKIN1 path MOPPP_LOWWN

Inertial Drift Segments			
#	Start Location	End Location	Length [NM]
1	N29° 54' 53.49", W099° 11' 38.42"	N29° 54' 13.32", W099° 09' 48.79"	1.7227
2	N29° 42' 52.56", W098° 49' 05.27"	N29° 37' 13.25", W098° 43' 06.48"	7.7993

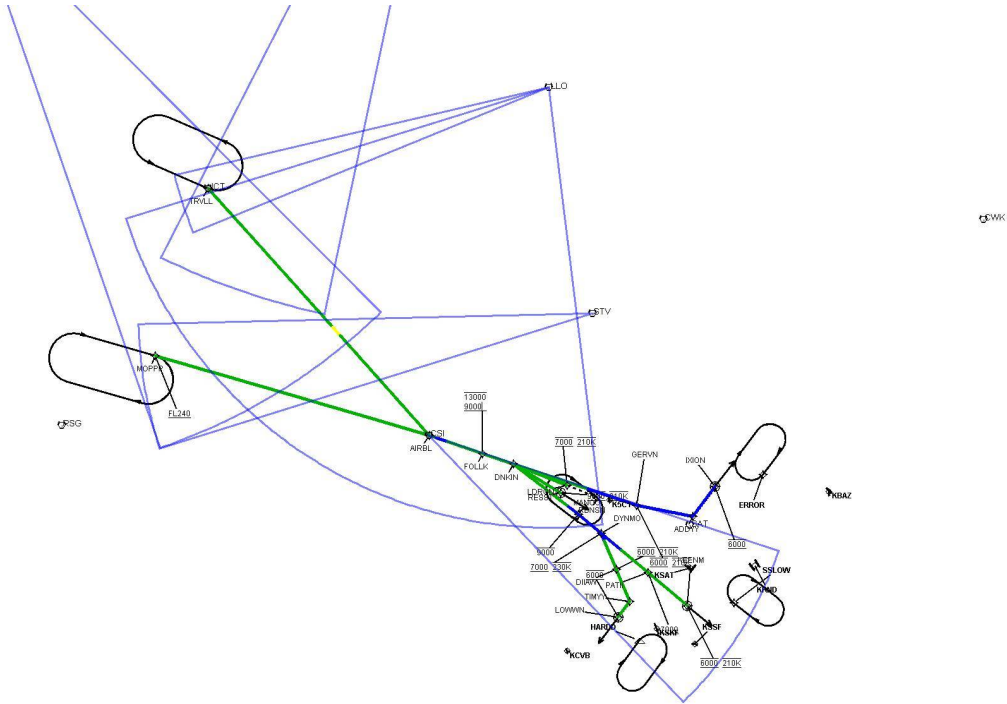
Available DMEs by Waypoints			
Waypoint Before	Waypoint After	DME List	Suggested DMEs
MOPPP	AIRBL	STV, RSG, CSI, JCT, SJT, LLO	
AIRBL	FOLLK	STV, SAT, CSI, LLO	
FOLLK	DNKIN	STV, SAT, CSI, LLO	
DNKIN	MANOO	SAT, CSI, LLO	
MANOO	DYNMO		
DYNMO	DIIAW	SAT, CSI	
DIIAW	TIMYY	SAT, CSI	
TIMYY	LOWWN	SAT, CSI	

User Data Files								
#	File Name							
1	UserDMEsKSAT [IFPA] DNKIN1 RNAV STAR_20230118_0735 CST.udt							
User DMEs								
#	Name	Lat/Lon	MAGVAR	Range	Elevation [ft]	Frequency	Replaces	Status
1	CSI FAA 766740-17 CSI [IFPA]	N29° 55' 20.48", W099° 12' 52.15"	8.0 E	130	2079.3	117.5	CSI FAA 766740-17	
ESV:		Bearing [True]: 112.0° to 140.0° Bearing [Mag]: 104.0° to 132.0°				Arc Distance: Out to 57.0 NM Altitude: 4000.0 to 18000.0 ft		
2	LLO FAA 700387-15 LLO [IFPA]	N30° 47' 46.83", W098° 47' 14.60"	8.0 E	40	1206.6	108.2	LLO FAA 700387-15	
ESV:		Bearing [True]: 177.0° to 257.0° Bearing [Mag]: 169.0° to 249.0°				Arc Distance: Out to 68.0 NM Altitude: 5000.0 to 18000.0 ft		
3	LLO FAA 700387-018 LLO [IFPA]	N30° 47' 46.83", W098° 47' 14.60"	8.0 E	40	1206.6	108.2	LLO FAA 700387-018	
ESV:		Bearing [True]: 252.0° to 261.0° Bearing [Mag]: 244.0° to 253.0°				Arc Distance: Out to 59.0 NM Altitude: 8900.0 to 19300.0 ft		
4	STV FAA 970146-026 STV [IFPA]	N30° 12' 24.33", W098° 42' 20.72"	8.0 E	130	1530	113.8	STV FAA 970146-026	
ESV:		Bearing [True]: 257.0° to 273.0° Bearing [Mag]: 249.0° to 265.0°				Arc Distance: Out to 70.0 NM Altitude: 8900.0 to 16100.0 ft		
5	BWD FAA 212001-008 BWD [IFPA]	N31° 53' 33.30", W098° 57' 26.86"	8.0 E	40	1574.3	113.55	BWD FAA 212001-008	
ESV:		Bearing [True]: 196.0° to 211.0° Bearing [Mag]: 188.0° to 203.0°				Arc Distance: Out to 102.0 NM Altitude: 8900.0 to 19600.0 ft		
6	SJT FAA 704198-020 SJT [IFPA]	N31° 22' 29.84", W100° 27' 17.53"	10.0 E	130	1886.1	115.1	SJT FAA 704198-020	
ESV:		Bearing [True]: 139.0° to 165.0° Bearing [Mag]: 129.0° to 155.0°				Arc Distance: Out to 89.0 NM Altitude: 8900.0 to 16400.0 ft		

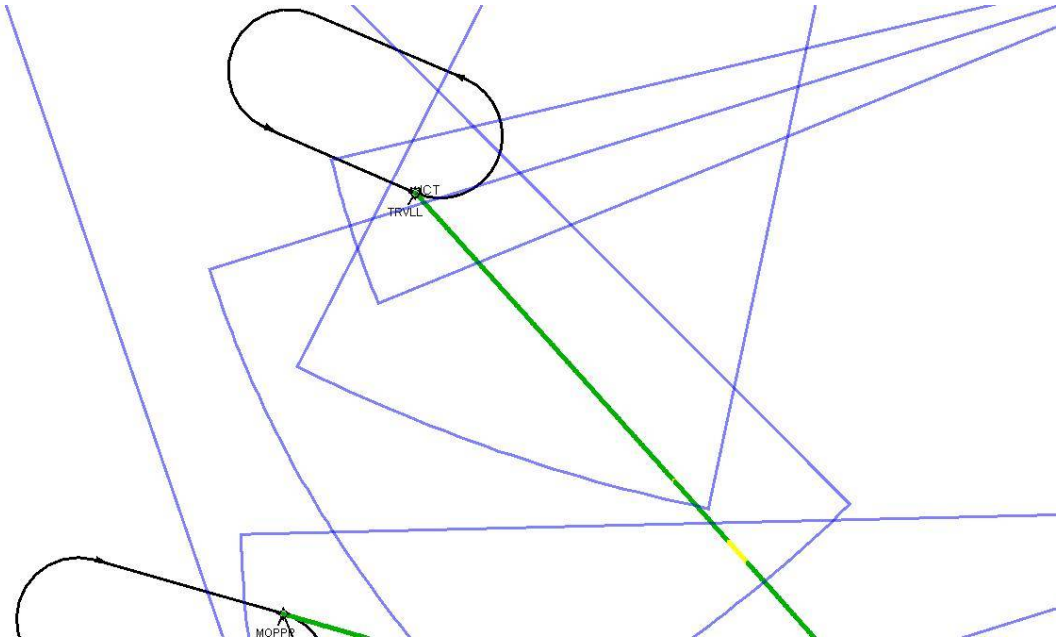


DME DME Assessment Results for DNKIN1 path MOPPP_LOWWN

Graphic Depiction 1

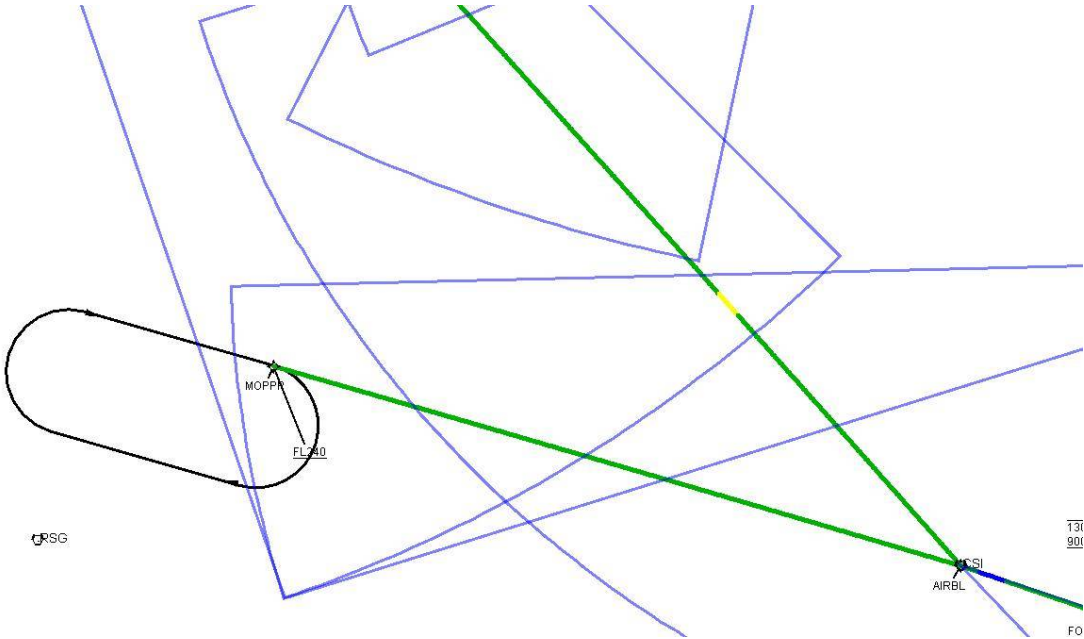


Graphic Depiction 2



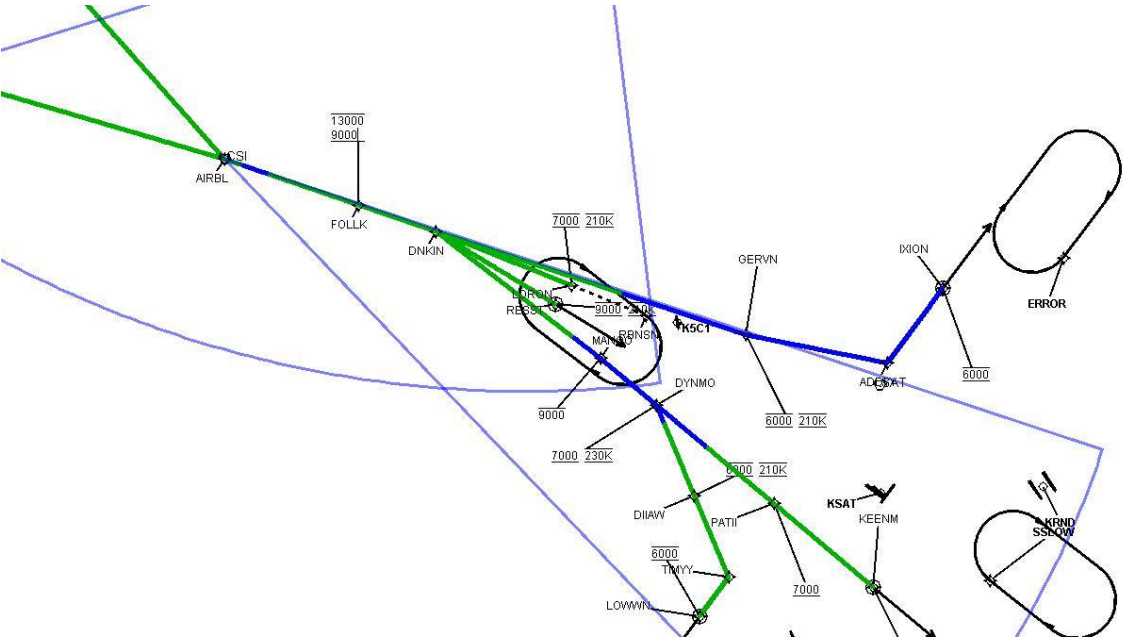
DME DME Assessment Results for DNKIN1 path MOPPP_LOWWN

Graphic Depiction 3



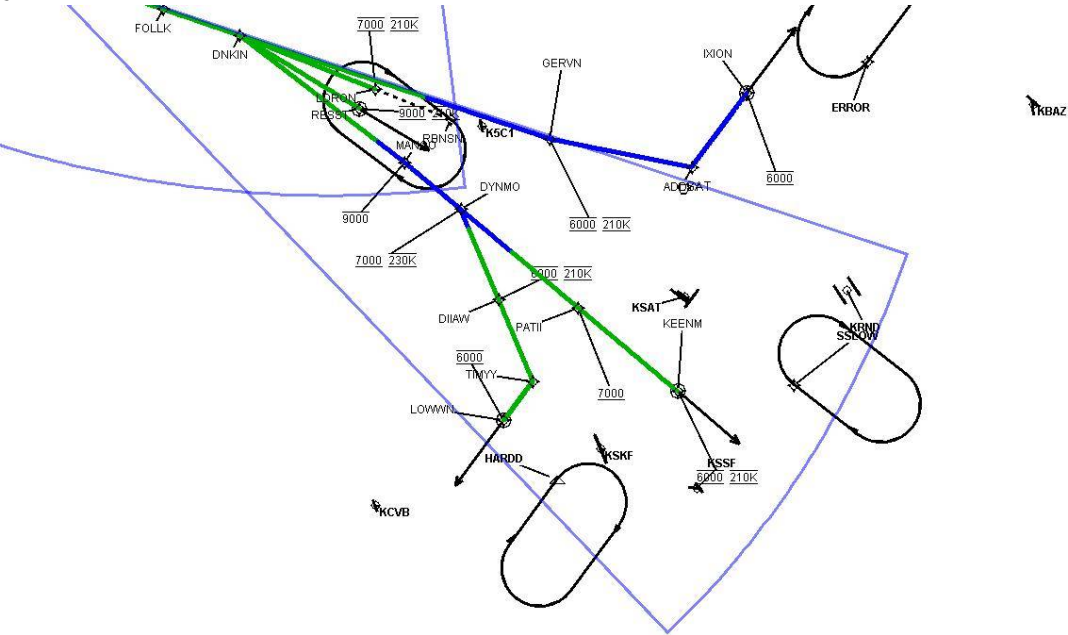
DME DME Assessment Results for DNKIN1 path MOPPP_LOWWN

Graphic Depiction 4



DME DME Assessment Results for DNKIN1 path MOPPP_LOWWN

Graphic Depiction 5



DME DME Assessment Results for DNKIN1 path MANOO_KEENM

Results Summary

Flyability:	Completed
DME/DME:	Completed - No Critical DMEs
Name:	William CTR Roth
Project File:	C:\Work Folder\STARs-SIDs Projects\SAT\Publications Docs CD 20230823\STARs\DNKIN\20230405\dme\KSAT DNKIN 202300405 DME.tgs
Output File:	C:\Work Folder\STARs-SIDs Projects\SAT\Publications Docs CD 20230823\STARs\DNKIN\20230405\dme\KSAT [IFPA] DNKIN1 20230405_1403 CDT\MANOO_KEENM\KSAT DNKIN1 RNAV STAR MANOO KEENM 20230405_1403 CDT.pdf
Procedure Name:	DNKIN1
Software: DmeDmePlugin:	7.0.2
Date/Time:	04/05/2023 14:03 CDT
Databases:	DTED Level 0 MAX

Failures

No Failures

Warnings

No Warnings

Informational

No Informational

Notes For Flight Check

None

Flight Plan

Name	Type	Lat/Lon	Altitude (ft)	VNAV Mode	Ground Speed (kts)	Turn Type	Leg Type
MANOO	WP	N29° 41' 28.65", W098° 47' 16.93"	5000	VNAV	230	FLY_BY	TF
PATII	WP	N29° 31' 49.05", W098° 35' 44.70"	5000	VNAV	210	FLY_BY	TF
KEENM	WP	N29° 26' 14.79", W098° 29' 08.07"	5000	VNAV	210	FLY_OVER	TF

Flyability

Flight Type:	RNAV_STAR
Selected Airport:	KSAT [IFPA]
Climb Gradient:	None assigned
Speeds:	200 Ground Speed to 11000 FT
	240 Ground Speed to 18000 FT
	260 Ground Speed to 24000 FT
	340 Ground Speed above 24000 FT
Descent During a Turn:	Allowed
VNAV Mode:	Flight Plan

DME DME Assessment Results for DNKIN1 path MANOO_KEENM

DME/DME	
RNP:	RNP 2
Flight Mode:	Manual
Line of Sight (DTED Level 0 Max):	Evaluated
Inertial Drift:	Enabled
Initial Drift:	0.558 NM
INS Drift Rate:	8.0 NM/Hour
Range Mode:	OSV
RNP Edges:	Evaluated
Min DME Range:	3.0 NM
DME Types:	DME, VOR-DME, VORTAC
DME Include Angles:	30 to 150
Critical DMEs:	Allowed
DoD Facilities:	Not included
Foreign Facilities:	Not included
High DMEs:	Included
Low DMEs:	Included
Terminal DMEs:	Included
Flight Check DMEs:	Not selected
Higher Altitudes:	Not Evaluated
Near Maximum Altitude:	Not Evaluated
Automatic ESVs:	Not enabled
Disabled DMEs:	None

DME/DME (Continued)										
DMEs Used										
#	Name	Lat/Lon	MAGVAR	Range	Type	Source	Critical	Status	Time	Distance
1	SAT	N29° 38' 38.51", W098° 27' 40.74"	8.0 E	130	H	IFPA	NO	Enabled	62.2 %	60.9 %
2	CSI	N29° 55' 20.48", W099° 12' 52.15"	8.0 E	130	H	IFPA	NO	Enabled	62.2 %	60.9 %

Flight Check DME Selection						
Distance [NM]	Selected DMEs					Alternate
0.0						
8.6	SAT	CSI				

Inertial Drift Segments			
#	Start Location	End Location	Length [NM]
1	N29° 41' 28.65", W098° 47' 16.93"	N29° 35' 31.48", W098° 40' 09.95"	8.5859

Available DMEs by Waypoints			
Waypoint Before	Waypoint After	DME List	Suggested DMEs
MANOO	PATII	SAT, CSI	
PATII	KEENM	SAT, CSI	

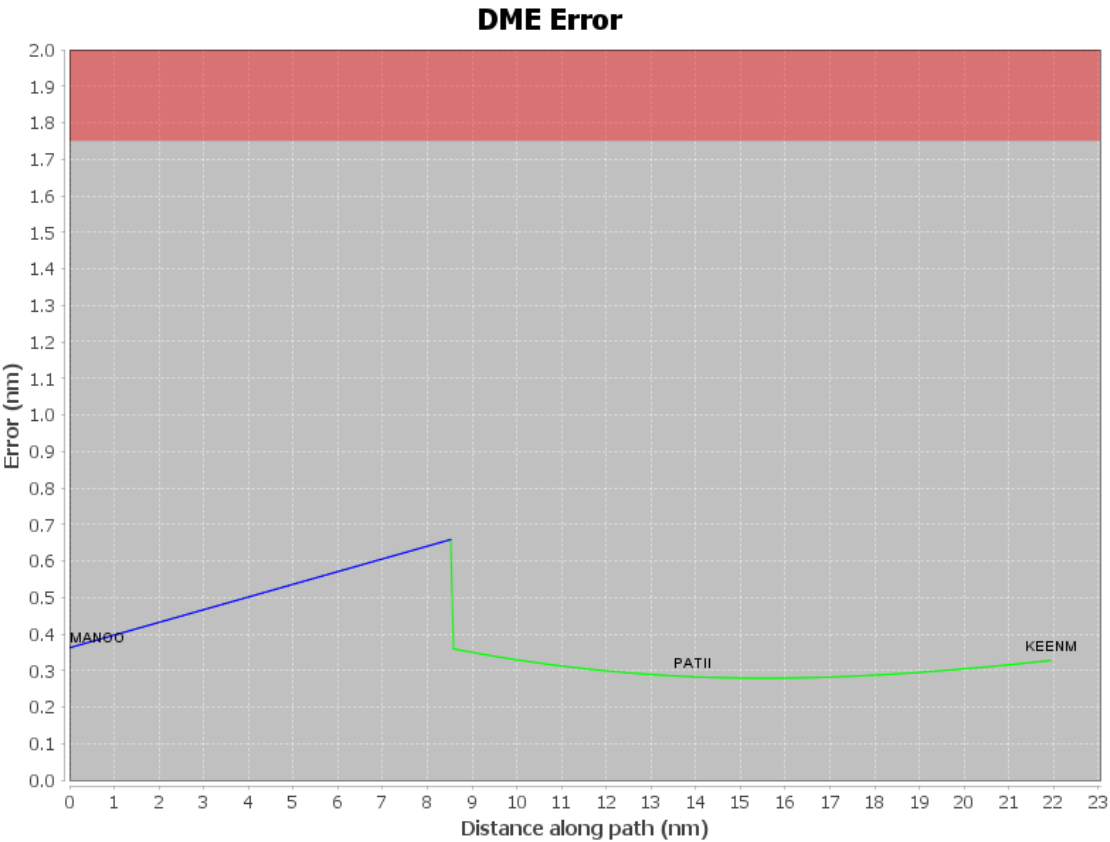
DME DME Assessment Results for DNKIN1 path MANOO_KEENM

User Data Files

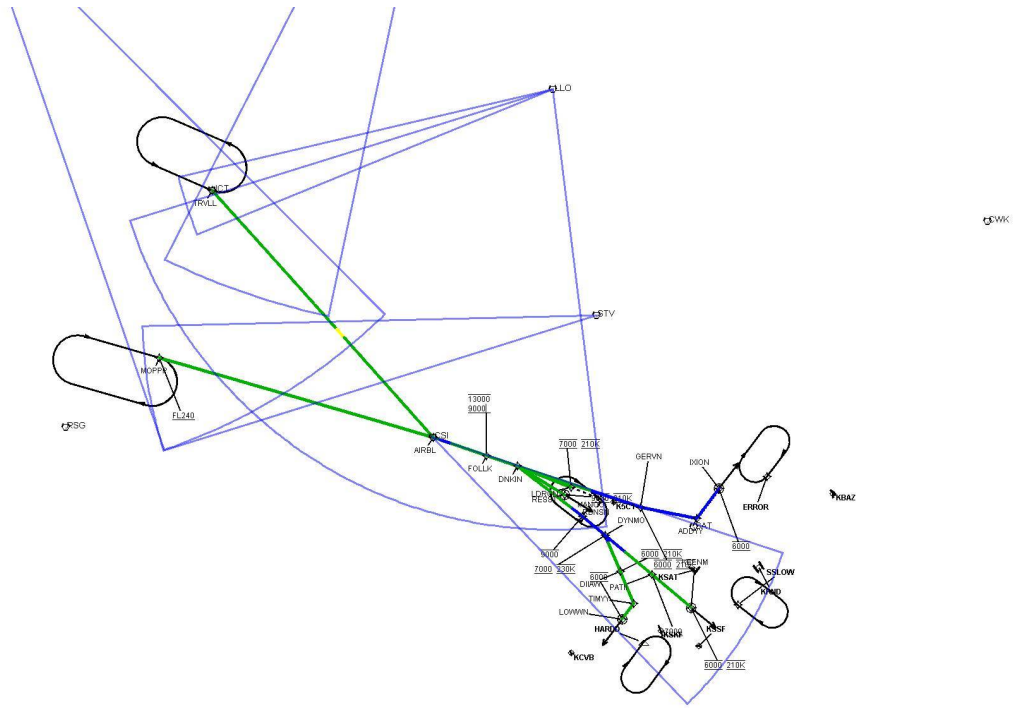
#	File Name
1	UserDMEsKSAT [IFPA] DNKIN1 RNAV STAR_20230118_0735 CST.udt

User DMEs

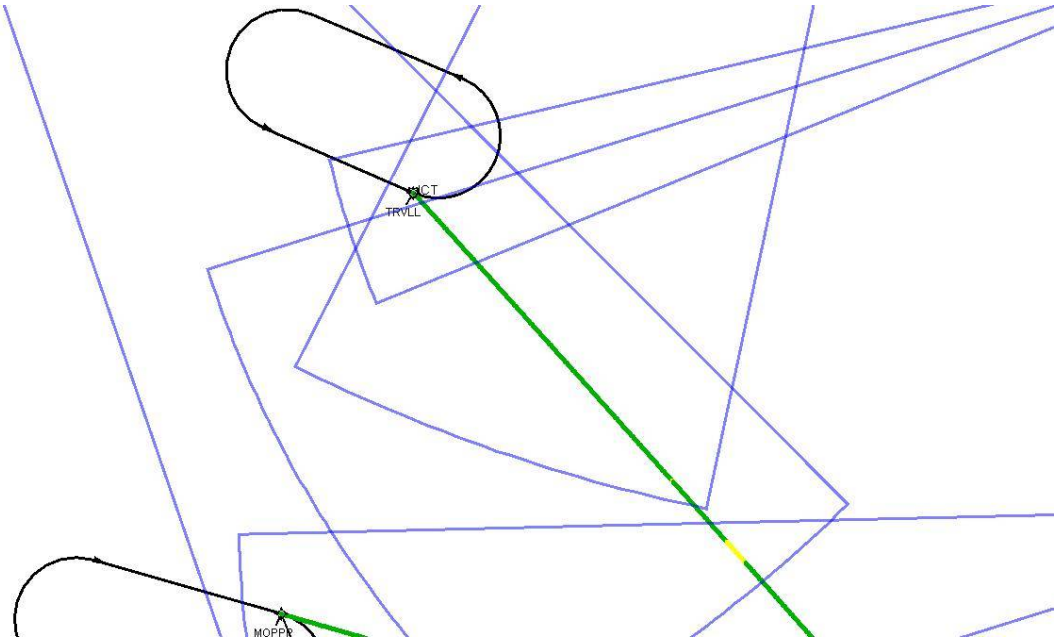
#	Name	Lat/Lon	MAGVAR	Range	Elevation [ft]	Frequency	Replaces	Status
1	CSI FAA 766740-17 CSI [IFPA]	N29° 55' 20.48", W099° 12' 52.15"	8.0 E	130	2079.3	117.5	CSI FAA 766740-17	
ESV:		Bearing [True]: 112.0° to 140.0° Bearing [Mag]: 104.0° to 132.0°				Arc Distance: Out to 57.0 NM Altitude: 4000.0 to 18000.0 ft		
2	LLO FAA 700387-15 LLO [IFPA]	N30° 47' 46.83", W098° 47' 14.60"	8.0 E	40	1206.6	108.2	LLO FAA 700387-15	
ESV:		Bearing [True]: 177.0° to 257.0° Bearing [Mag]: 169.0° to 249.0°				Arc Distance: Out to 68.0 NM Altitude: 5000.0 to 18000.0 ft		
3	LLO FAA 700387-018 LLO [IFPA]	N30° 47' 46.83", W098° 47' 14.60"	8.0 E	40	1206.6	108.2	LLO FAA 700387-018	
ESV:		Bearing [True]: 252.0° to 261.0° Bearing [Mag]: 244.0° to 253.0°				Arc Distance: Out to 59.0 NM Altitude: 8900.0 to 19300.0 ft		
4	STV FAA 970146-026 STV [IFPA]	N30° 12' 24.33", W098° 42' 20.72"	8.0 E	130	1530	113.8	STV FAA 970146-026	
ESV:		Bearing [True]: 257.0° to 273.0° Bearing [Mag]: 249.0° to 265.0°				Arc Distance: Out to 70.0 NM Altitude: 8900.0 to 16100.0 ft		
5	BWD FAA 212001-008 BWD [IFPA]	N31° 53' 33.30", W098° 57' 26.86"	8.0 E	40	1574.3	113.55	BWD FAA 212001-008	
ESV:		Bearing [True]: 196.0° to 211.0° Bearing [Mag]: 188.0° to 203.0°				Arc Distance: Out to 102.0 NM Altitude: 8900.0 to 19600.0 ft		
6	SJT FAA 704198-020 SJT [IFPA]	N31° 22' 29.84", W100° 27' 17.53"	10.0 E	130	1886.1	115.1	SJT FAA 704198-020	
ESV:		Bearing [True]: 139.0° to 165.0° Bearing [Mag]: 129.0° to 155.0°				Arc Distance: Out to 89.0 NM Altitude: 8900.0 to 16400.0 ft		



Graphic Depiction 1

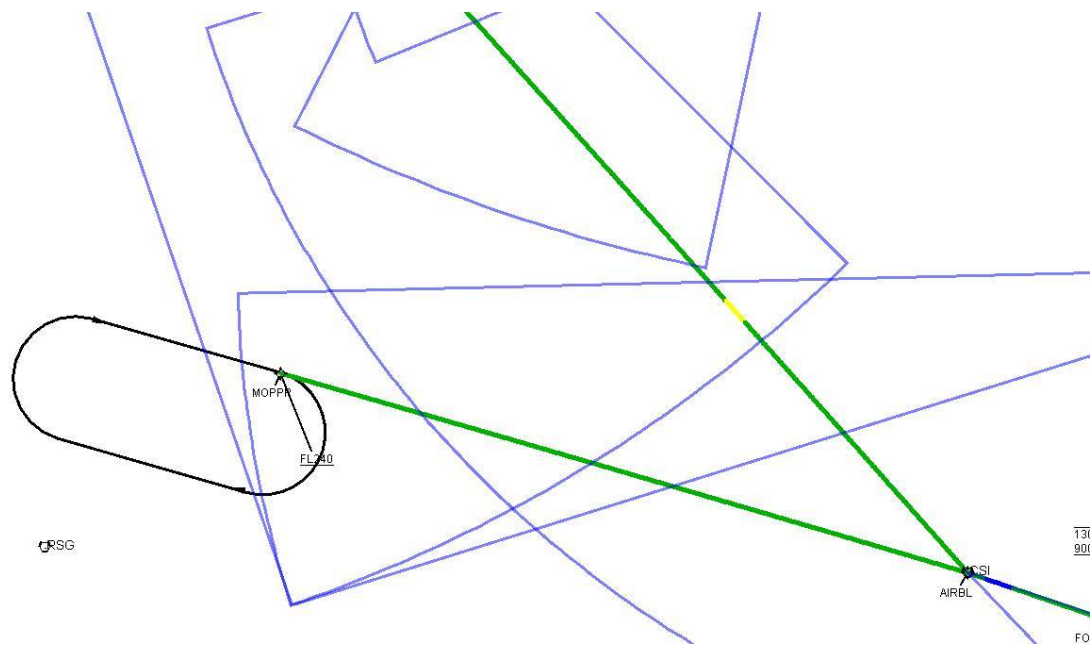


Graphic Depiction 2



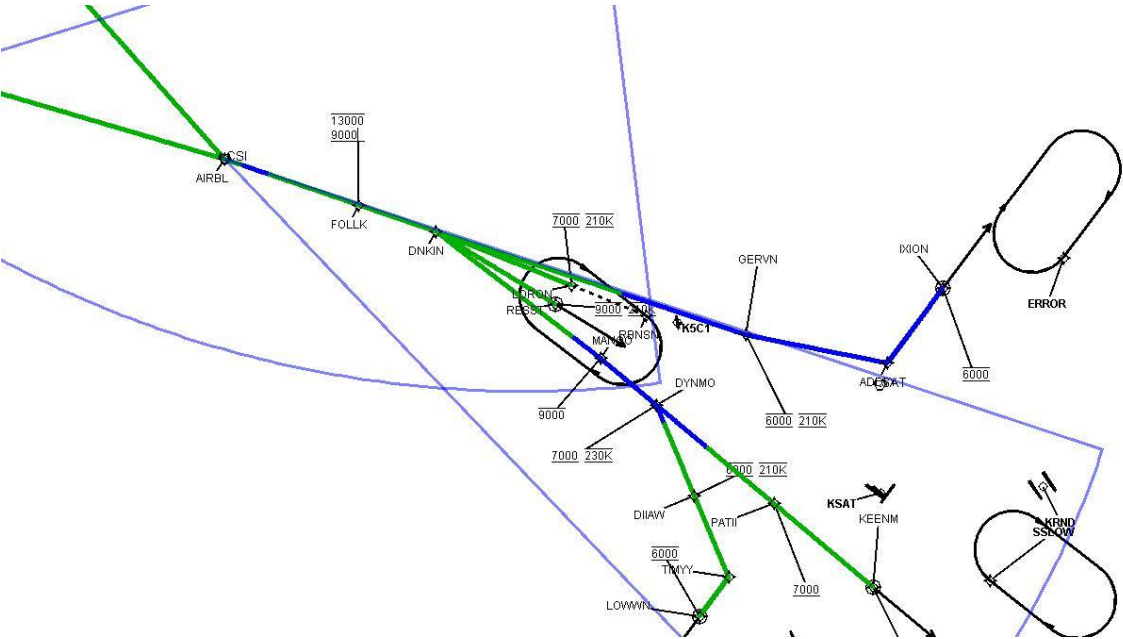
DME DME Assessment Results for DNKIN1 path MANOO_KEENM

Graphic Depiction 3



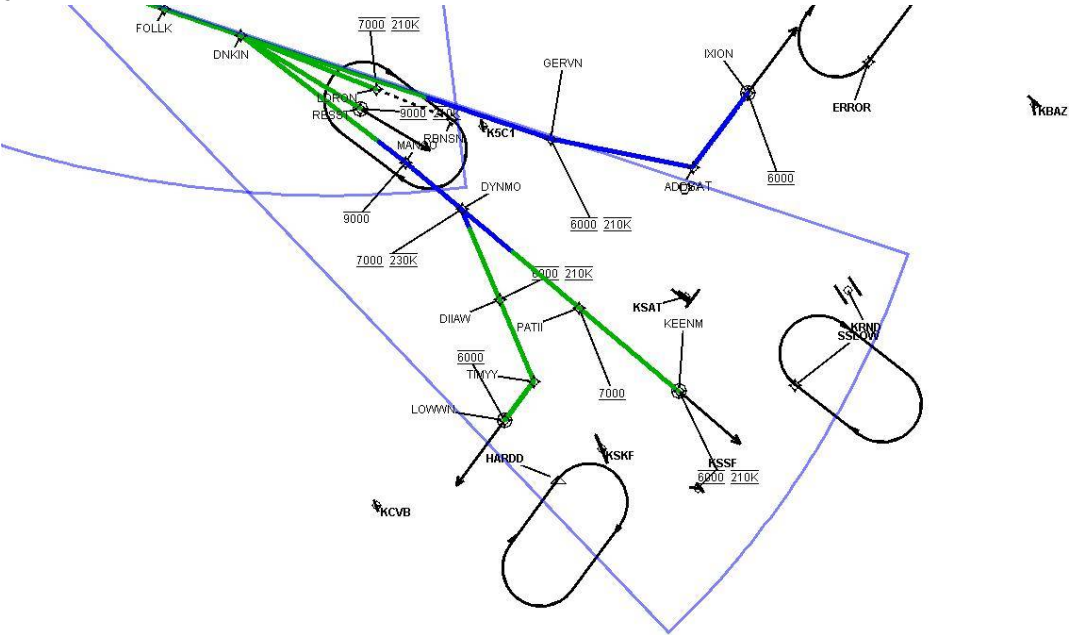
DME DME Assessment Results for DNKIN1 path MANOO_KEENM

Graphic Depiction 4



DME DME Assessment Results for DNKIN1 path MANOO_KEENM

Graphic Depiction 5



DME DME Assessment Results for DNKIN1 path DNKIN_RESST

Results Summary

Flyability:	Completed
DME/DME:	Completed - No Critical DMEs
Name:	William CTR Roth
Project File:	C:\Work Folder\STARs-SIDs Projects\SAT\Publications Docs CD 20230823\STARs\DNKIN\20230405\dme\KSAT DNKIN 202300405 DME.tgs
Output File:	C:\Work Folder\STARs-SIDs Projects\SAT\Publications Docs CD 20230823\STARs\DNKIN\20230405\dme\KSAT [IFPA] DNKIN1 20230405_1403 CDT\DNKIN_RESST\KSAT DNKIN1 RNAV STAR DNKIN RESST 20230405_1403 CDT.pdf
Procedure Name:	DNKIN1
Software: DmeDmePlugin:	7.0.2
Date/Time:	04/05/2023 14:03 CDT
Databases:	DTED Level 0 MAX

Failures

No Failures

Warnings

No Warnings

Informational

No Informational

Notes For Flight Check

None

Flight Plan

Name	Type	Lat/Lon	Altitude (ft)	VNAV Mode	Ground Speed (kts)	Turn Type	Leg Type
DNKIN	WP	N29° 49' 59.32", W098° 58' 17.60"	5000	VNAV	230	FLY_BY	TF
RESST	WP	N29° 44' 59.07", W098° 50' 11.15"	5000	VNAV	210	FLY_OVER	TF

Flyability

Flight Type:	RNAV_STAR
Selected Airport:	KSAT [IFPA]
Climb Gradient:	None assigned
Speeds:	200 Ground Speed to 11000 FT
	240 Ground Speed to 18000 FT
	260 Ground Speed to 24000 FT
	340 Ground Speed above 24000 FT
Descent During a Turn:	Allowed
VNAV Mode:	Flight Plan

DME DME Assessment Results for DNKIN1 path DNKIN_RESST

DME/DME	
RNP:	RNP 2
Flight Mode:	Manual
Line of Sight (DTED Level 0 Max):	Evaluated
Inertial Drift:	Enabled
Initial Drift:	0.558 NM
INS Drift Rate:	8.0 NM/Hour
Range Mode:	OSV
RNP Edges:	Evaluated
Min DME Range:	3.0 NM
DME Types:	DME, VOR-DME, VORTAC
DME Include Angles:	30 to 150
Critical DMEs:	Allowed
DoD Facilities:	Not included
Foreign Facilities:	Not included
High DMEs:	Included
Low DMEs:	Included
Terminal DMEs:	Included
Flight Check DMEs:	Not selected
Higher Altitudes:	Not Evaluated
Near Maximum Altitude:	Not Evaluated
Automatic ESVs:	Not enabled
Disabled DMEs:	None

DME/DME (Continued)										
DMEs Used										
#	Name	Lat/Lon	MAGVAR	Range	Type	Source	Critical	Status	Time	Distance
1	LLO	N30° 47' 46.83", W098° 47' 14.60"	8.0 E	40	L	IFPA	NO	Enabled	100 %	100 %
2	SAT	N29° 38' 38.51", W098° 27' 40.74"	8.0 E	130	H	IFPA	NO	Enabled	100 %	100 %
3	CSI	N29° 55' 20.48", W099° 12' 52.15"	8.0 E	130	H	IFPA	NO	Enabled	100 %	100 %

Flight Check DME Selection						
Distance [NM]	Selected DMEs					Alternate
0.0	LLO	CSI	SAT			

Inertial Drift Segments			
#	Start Location	End Location	Length [NM]

Available DMEs by Waypoints			
Waypoint Before	Waypoint After	DME List	Suggested DMEs
DNKIN	RESST	SAT, CSI, LLO	

DME DME Assessment Results for DNKIN1 path DNKIN_RESST

User Data Files

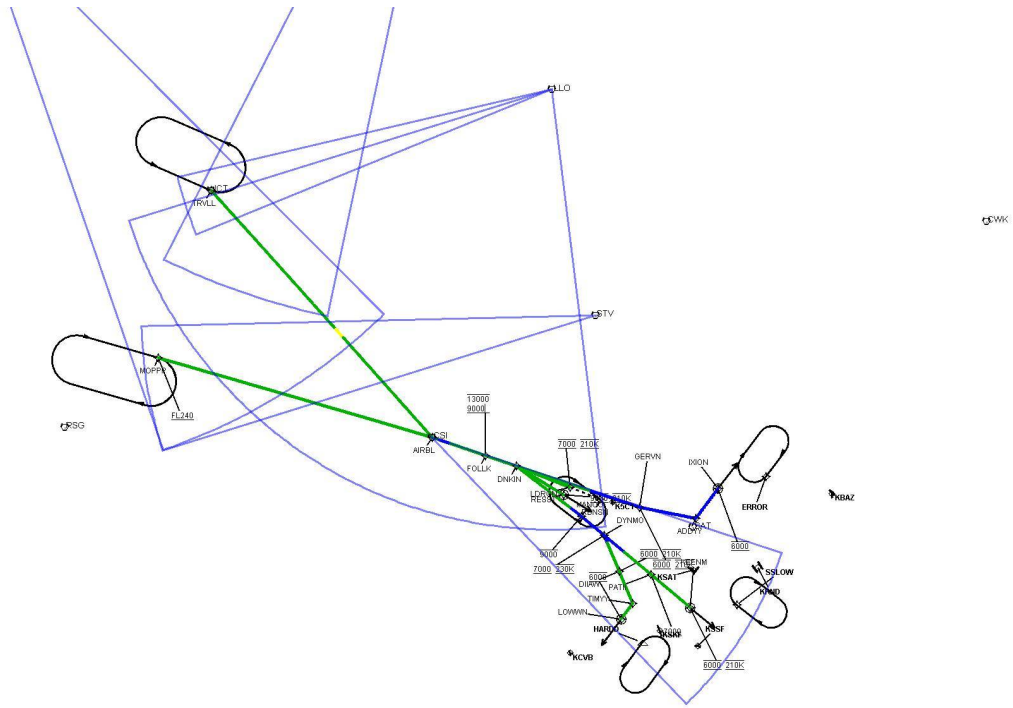
#	File Name
1	UserDMEsKSAT [IFPA] DNKIN1 RNAV STAR_20230118_0735 CST.udt

User DMEs

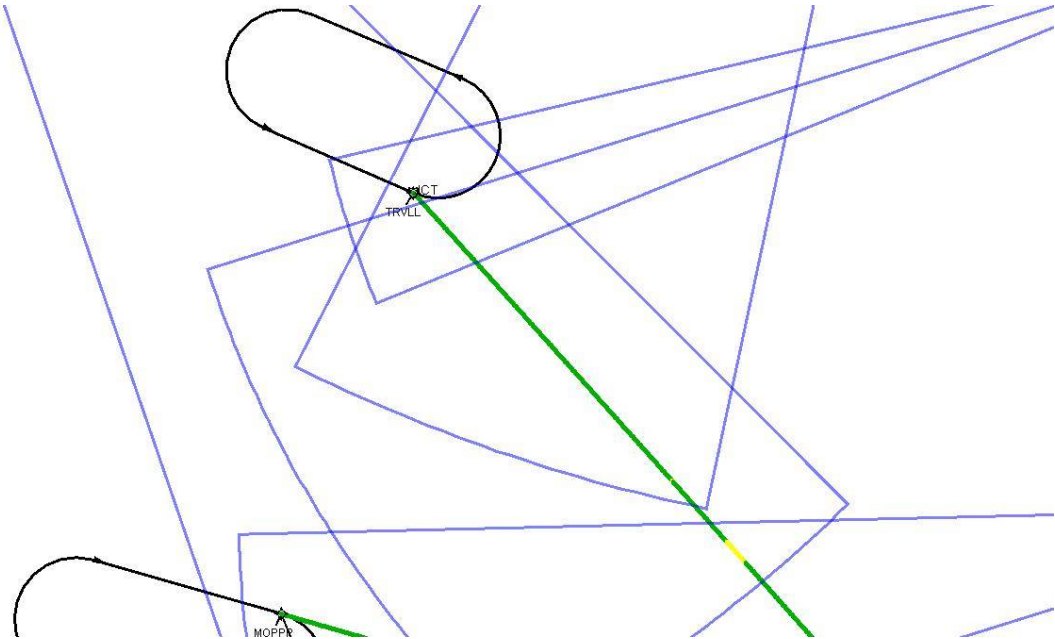
#	Name	Lat/Lon	MAGVAR	Range	Elevation [ft]	Frequency	Replaces	Status
1	CSI FAA 766740-17 CSI [IFPA]	N29° 55' 20.48", W099° 12' 52.15"	8.0 E	130	2079.3	117.5	CSI FAA 766740-17	
ESV:		Bearing [True]: 112.0° to 140.0° Bearing [Mag]: 104.0° to 132.0°				Arc Distance: Out to 57.0 NM Altitude: 4000.0 to 18000.0 ft		
2	LLO FAA 700387-15 LLO [IFPA]	N30° 47' 46.83", W098° 47' 14.60"	8.0 E	40	1206.6	108.2	LLO FAA 700387-15	
ESV:		Bearing [True]: 177.0° to 257.0° Bearing [Mag]: 169.0° to 249.0°				Arc Distance: Out to 68.0 NM Altitude: 5000.0 to 18000.0 ft		
3	LLO FAA 700387-018 LLO [IFPA]	N30° 47' 46.83", W098° 47' 14.60"	8.0 E	40	1206.6	108.2	LLO FAA 700387-018	
ESV:		Bearing [True]: 252.0° to 261.0° Bearing [Mag]: 244.0° to 253.0°				Arc Distance: Out to 59.0 NM Altitude: 8900.0 to 19300.0 ft		
4	STV FAA 970146-026 STV [IFPA]	N30° 12' 24.33", W098° 42' 20.72"	8.0 E	130	1530	113.8	STV FAA 970146-026	
ESV:		Bearing [True]: 257.0° to 273.0° Bearing [Mag]: 249.0° to 265.0°				Arc Distance: Out to 70.0 NM Altitude: 8900.0 to 16100.0 ft		
5	BWD FAA 212001-008 BWD [IFPA]	N31° 53' 33.30", W098° 57' 26.86"	8.0 E	40	1574.3	113.55	BWD FAA 212001-008	
ESV:		Bearing [True]: 196.0° to 211.0° Bearing [Mag]: 188.0° to 203.0°				Arc Distance: Out to 102.0 NM Altitude: 8900.0 to 19600.0 ft		
6	SJT FAA 704198-020 SJT [IFPA]	N31° 22' 29.84", W100° 27' 17.53"	10.0 E	130	1886.1	115.1	SJT FAA 704198-020	
ESV:		Bearing [True]: 139.0° to 165.0° Bearing [Mag]: 129.0° to 155.0°				Arc Distance: Out to 89.0 NM Altitude: 8900.0 to 16400.0 ft		



Graphic Depiction 1

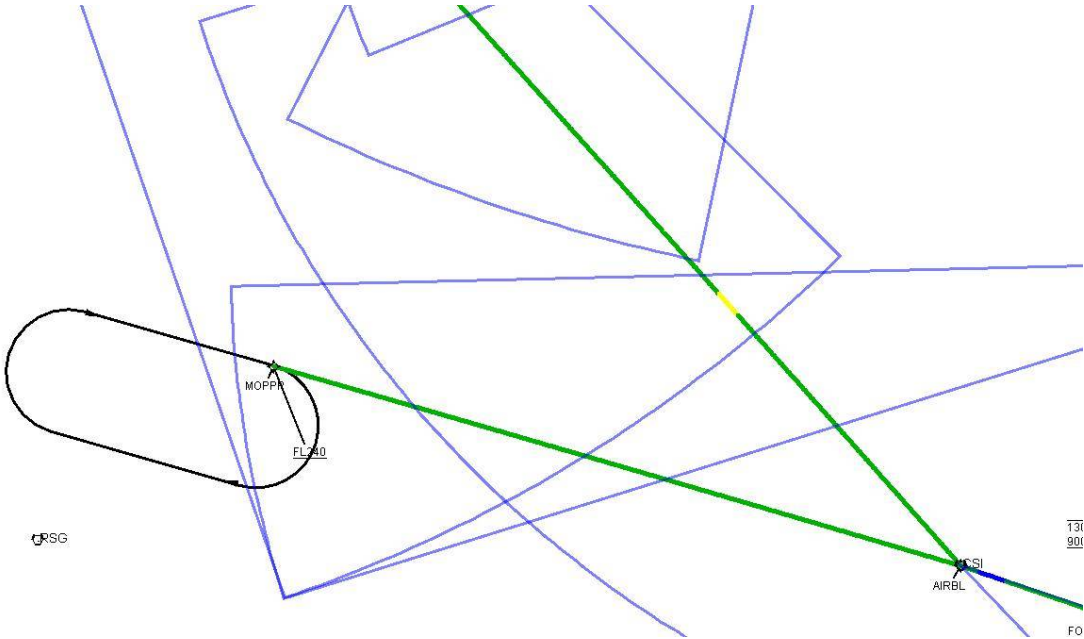


Graphic Depiction 2



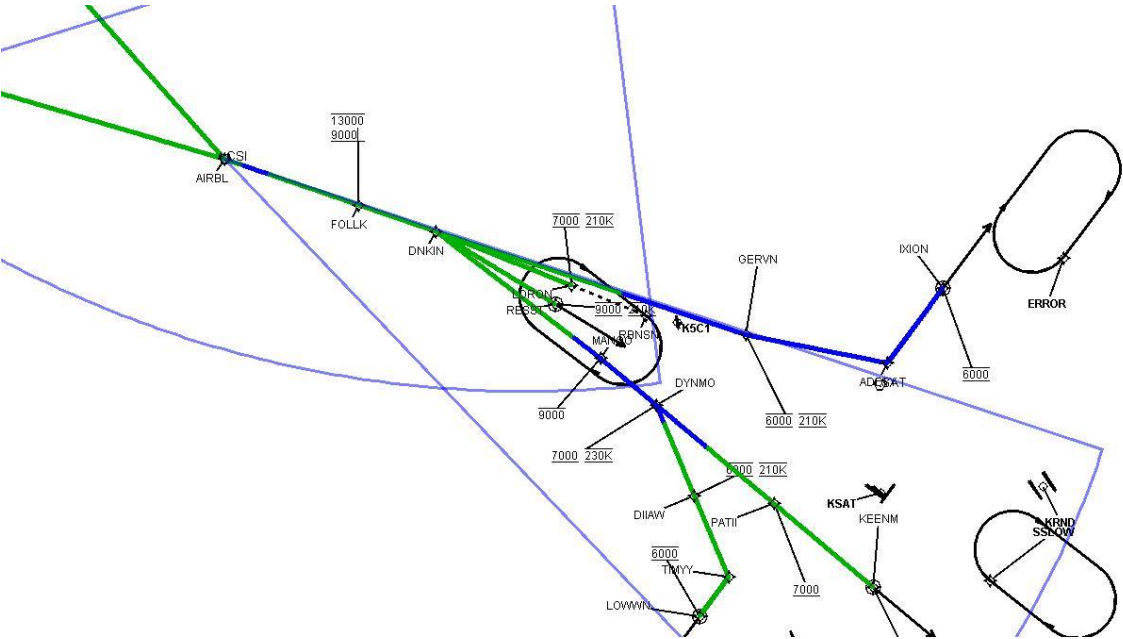
DME DME Assessment Results for DNKIN1 path DNKIN_RESST

Graphic Depiction 3



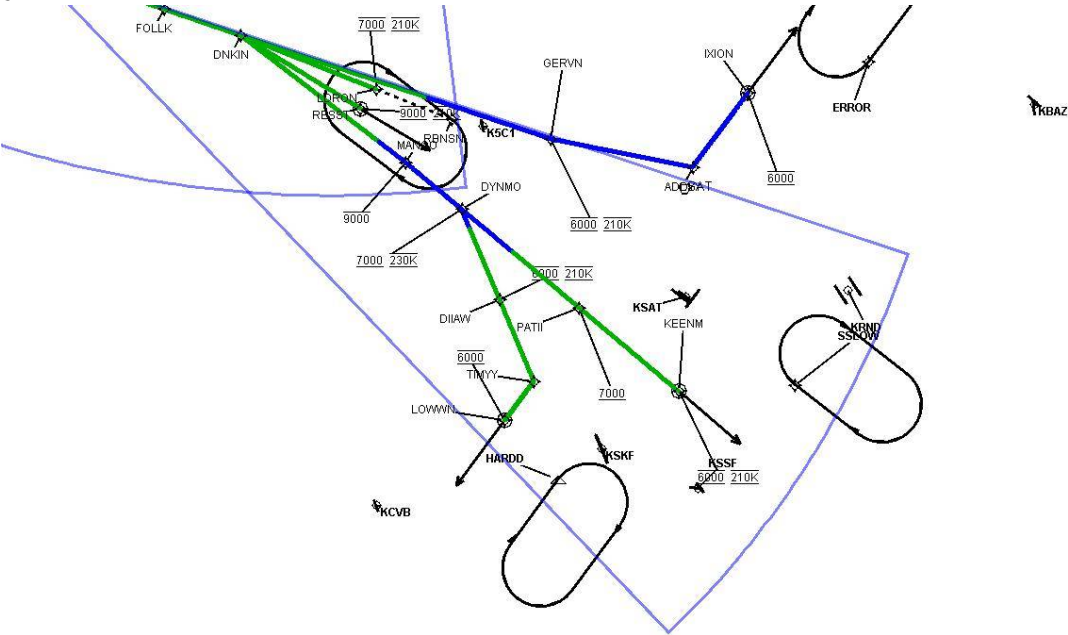
DME DME Assessment Results for DNKIN1 path DNKIN_RESST

Graphic Depiction 4



DME DME Assessment Results for DNKIN1 path DNKIN_RESST

Graphic Depiction 5



DME DME Assessment Results for DNKIN1 path DNKIN_LDRON

Results Summary

Flyability:	Completed
DME/DME:	Completed - No Critical DMEs
Name:	William CTR Roth
Project File:	C:\Work Folder\STARs-SIDs Projects\SAT\Publications Docs CD 20230823\STARs\DNKIN\20230405\dme\KSAT DNKIN 202300405 DME.tgs
Output File:	C:\Work Folder\STARs-SIDs Projects\SAT\Publications Docs CD 20230823\STARs\DNKIN\20230405\dme\KSAT [IFPA] DNKIN1 20230405_1403 CDT\DNKIN_LDRON\KSAT DNKIN1 RNAV STAR DNKIN LDRON 20230405_1403 CDT.pdf
Procedure Name:	DNKIN1
Software: DmeDmePlugin:	7.0.2
Date/Time:	04/05/2023 14:03 CDT
Databases:	DTED Level 0 MAX

Failures

No Failures

Warnings

No Warnings

Informational

No Informational

Notes For Flight Check

None

Flight Plan

Name	Type	Lat/Lon	Altitude (ft)	VNAV Mode	Ground Speed (kts)	Turn Type	Leg Type
DNKIN	WP	N29° 49' 59.32", W098° 58' 17.60"	5000	VNAV	230	FLY_BY	TF
LDRON	WP	N29° 46' 06.00", W098° 48' 59.76"	5000	VNAV	210	FLY_BY	TF

Flyability

Flight Type:	RNAV_STAR
Selected Airport:	KSAT [IFPA]
Climb Gradient:	None assigned
Speeds:	200 Ground Speed to 11000 FT
	240 Ground Speed to 18000 FT
	260 Ground Speed to 24000 FT
	340 Ground Speed above 24000 FT
Descent During a Turn:	Allowed
VNAV Mode:	Flight Plan

DME DME Assessment Results for DNKIN1 path DNKIN_LDRON

DME/DME	
RNP:	RNP 2
Flight Mode:	Manual
Line of Sight (DTED Level 0 Max):	Evaluated
Inertial Drift:	Enabled
Initial Drift:	0.558 NM
INS Drift Rate:	8.0 NM/Hour
Range Mode:	OSV
RNP Edges:	Evaluated
Min DME Range:	3.0 NM
DME Types:	DME, VOR-DME, VORTAC
DME Include Angles:	30 to 150
Critical DMEs:	Allowed
DoD Facilities:	Not included
Foreign Facilities:	Not included
High DMEs:	Included
Low DMEs:	Included
Terminal DMEs:	Included
Flight Check DMEs:	Not selected
Higher Altitudes:	Not Evaluated
Near Maximum Altitude:	Not Evaluated
Automatic ESVs:	Not enabled
Disabled DMEs:	None

DME/DME (Continued)										
DMEs Used										
#	Name	Lat/Lon	MAGVAR	Range	Type	Source	Critical	Status	Time	Distance
1	LLO	N30° 47' 46.83", W098° 47' 14.60"	8.0 E	40	L	IFPA	NO	Enabled	100 %	100 %
2	SAT	N29° 38' 38.51", W098° 27' 40.74"	8.0 E	130	H	IFPA	NO	Enabled	100 %	100 %
3	CSI	N29° 55' 20.48", W099° 12' 52.15"	8.0 E	130	H	IFPA	NO	Enabled	100 %	100 %

Flight Check DME Selection						
Distance [NM]	Selected DMEs					Alternate
0.0	LLO	CSI	SAT			

Inertial Drift Segments			
#	Start Location	End Location	Length [NM]

Available DMEs by Waypoints			
Waypoint Before	Waypoint After	DME List	Suggested DMEs
DNKIN	LDRON	SAT, CSI, LLO	

DME DME Assessment Results for DNKIN1 path DNKIN_LDRON

User Data Files

#	File Name							
1	UserDMEsKSAT [IFPA] DNKIN1 RNAV STAR_20230118_0735 CST.udt							

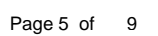
User DMEs

#	Name	Lat/Lon	MAGVAR	Range	Elevation [ft]	Frequency	Replaces	Status
1	CSI FAA 766740-17 CSI [IFPA]	N29° 55' 20.48", W099° 12' 52.15"	8.0 E	130	2079.3	117.5	CSI FAA 766740-17	
ESV:		Bearing [True]: 112.0° to 140.0° Bearing [Mag]: 104.0° to 132.0°				Arc Distance: Out to 57.0 NM Altitude: 4000.0 to 18000.0 ft		
2	LLO FAA 700387-15 LLO [IFPA]	N30° 47' 46.83", W098° 47' 14.60"	8.0 E	40	1206.6	108.2	LLO FAA 700387-15	
ESV:		Bearing [True]: 177.0° to 257.0° Bearing [Mag]: 169.0° to 249.0°				Arc Distance: Out to 68.0 NM Altitude: 5000.0 to 18000.0 ft		
3	LLO FAA 700387-018 LLO [IFPA]	N30° 47' 46.83", W098° 47' 14.60"	8.0 E	40	1206.6	108.2	LLO FAA 700387-018	
ESV:		Bearing [True]: 252.0° to 261.0° Bearing [Mag]: 244.0° to 253.0°				Arc Distance: Out to 59.0 NM Altitude: 8900.0 to 19300.0 ft		
4	STV FAA 970146-026 STV [IFPA]	N30° 12' 24.33", W098° 42' 20.72"	8.0 E	130	1530	113.8	STV FAA 970146-026	
ESV:		Bearing [True]: 257.0° to 273.0° Bearing [Mag]: 249.0° to 265.0°				Arc Distance: Out to 70.0 NM Altitude: 8900.0 to 16100.0 ft		
5	BWD FAA 212001-008 BWD [IFPA]	N31° 53' 33.30", W098° 57' 26.86"	8.0 E	40	1574.3	113.55	BWD FAA 212001-008	
ESV:		Bearing [True]: 196.0° to 211.0° Bearing [Mag]: 188.0° to 203.0°				Arc Distance: Out to 102.0 NM Altitude: 8900.0 to 19600.0 ft		
6	SJT FAA 704198-020 SJT [IFPA]	N31° 22' 29.84", W100° 27' 17.53"	10.0 E	130	1886.1	115.1	SJT FAA 704198-020	
ESV:		Bearing [True]: 139.0° to 165.0° Bearing [Mag]: 129.0° to 155.0°				Arc Distance: Out to 89.0 NM Altitude: 8900.0 to 16400.0 ft		

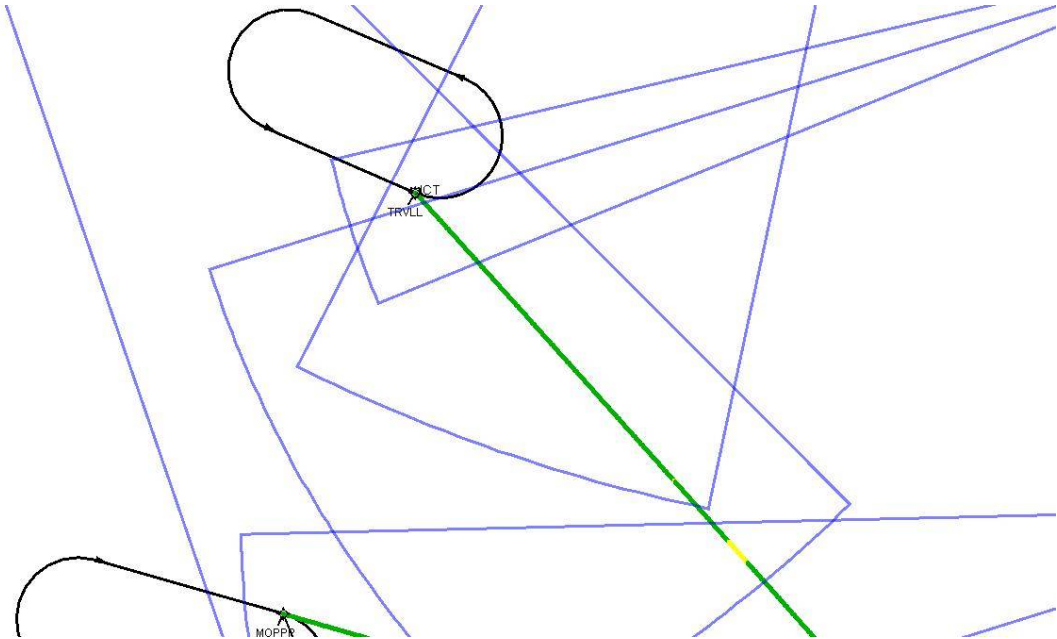
DME DME Assessment Results for DNKIN1 path DNKIN_LDRON



Graphic Depiction 1

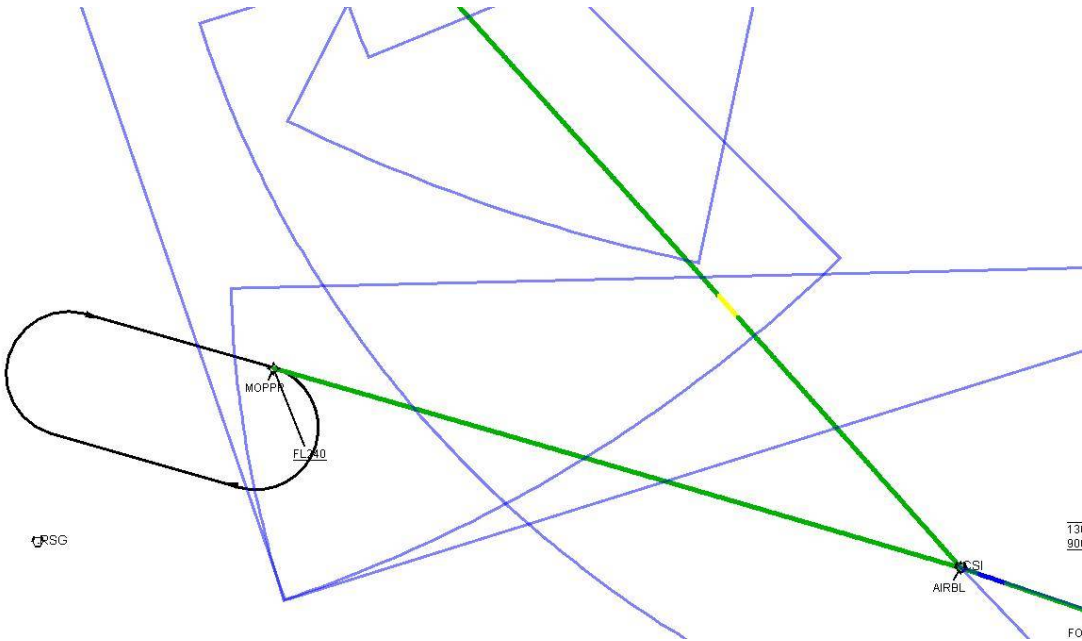


Graphic Depiction 2



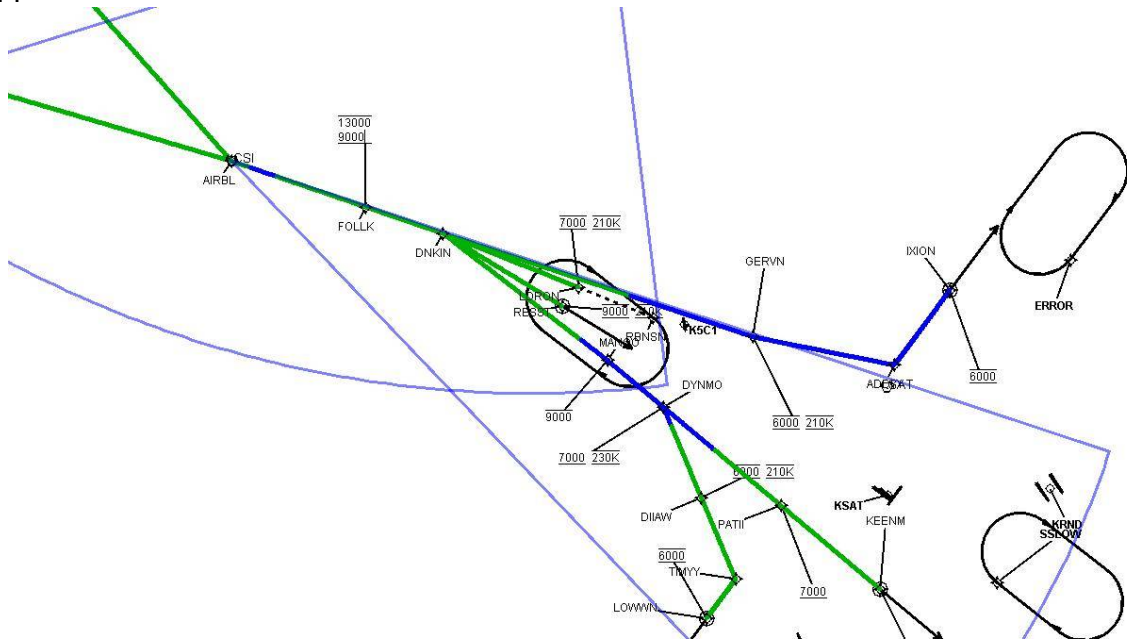
DME DME Assessment Results for DNKIN1 path DNKIN_LDRON

Graphic Depiction 3



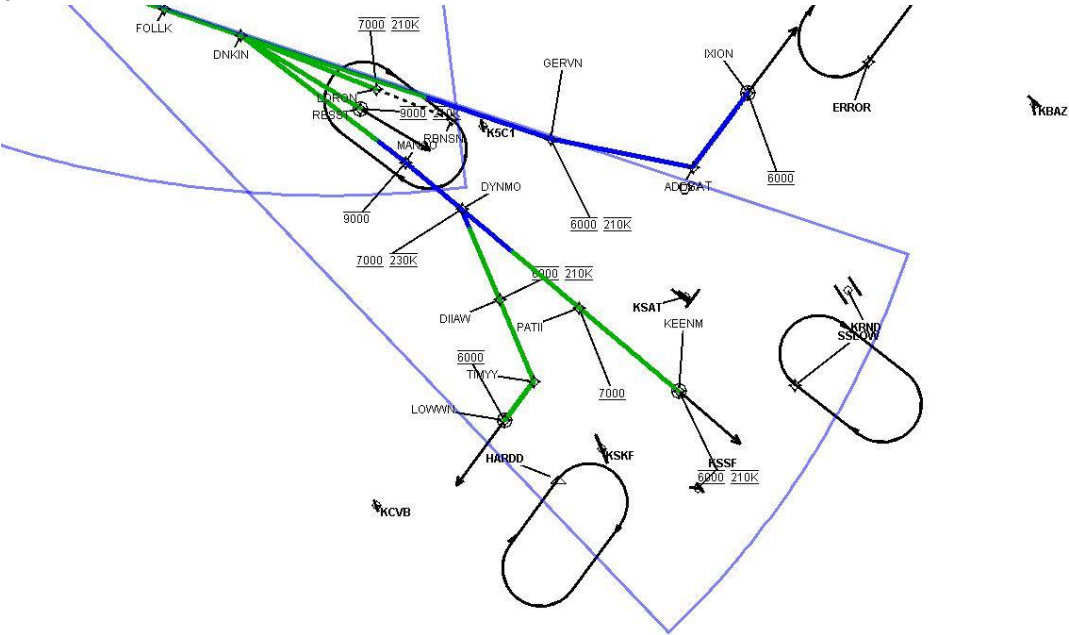
DME DME Assessment Results for DNKIN1 path DNKIN_LDRON

Graphic Depiction 4



DME DME Assessment Results for DNKIN1 path DNKIN_LDRON

Graphic Depiction 5



DME DME Assessment Results for DNKIN1 path DNKIN_IXION

Results Summary

Flyability:	Completed
DME/DME:	Completed - No Critical DMEs
Name:	William CTR Roth
Project File:	C:\Work Folder\STARs-SIDs Projects\SAT\Publications Docs CD 20230823\STARs\DNKIN\20230405\dme\KSAT DNKIN 202300405 DME.tgs
Output File:	C:\Work Folder\STARs-SIDs Projects\SAT\Publications Docs CD 20230823\STARs\DNKIN\20230405\dme\KSAT [IFPA] DNKIN1 20230405_1403 CDT\DNKIN_IXION\KSAT DNKIN1 RNAV STAR DNKIN IXION 20230405_1403 CDT.pdf
Procedure Name:	DNKIN1
Software: DmeDmePlugin:	7.0.2
Date/Time:	04/05/2023 14:03 CDT
Databases:	DTED Level 0 MAX

Failures

No Failures

Warnings

No Warnings

Informational

No Informational

Notes For Flight Check

None

Flight Plan

Name	Type	Lat/Lon	Altitude (ft)	VNAV Mode	Ground Speed (kts)	Turn Type	Leg Type
DNKIN	WP	N29° 49' 59.32", W098° 58' 17.60"	5000	VNAV	230	FLY_BY	TF
GERVN	WP	N29° 42' 18.42", W098° 36' 53.96"	5000	VNAV	210	FLY_BY	TF
ADDYY	WP	N29° 39' 57.69", W098° 27' 01.49"	5000	VNAV	210	FLY_BY	TF
IXION	WP	N29° 44' 17.90", W098° 22' 44.62"	5000	VNAV	210	FLY_OVER	TF

Flyability

Flight Type:	RNAV_STAR
Selected Airport:	KSAT [IFPA]
Climb Gradient:	None assigned
Speeds:	200 Ground Speed to 11000 FT
	240 Ground Speed to 18000 FT
	260 Ground Speed to 24000 FT
	340 Ground Speed above 24000 FT
Descent During a Turn:	Allowed
VNAV Mode:	Flight Plan

DME DME Assessment Results for DNKIN1 path DNKIN_IXION

DME/DME	
RNP:	RNP 2
Flight Mode:	Manual
Line of Sight (DTED Level 0 Max):	Evaluated
Inertial Drift:	Enabled
Initial Drift:	0.558 NM
INS Drift Rate:	8.0 NM/Hour
Range Mode:	OSV
RNP Edges:	Evaluated
Min DME Range:	3.0 NM
DME Types:	DME, VOR-DME, VORTAC
DME Include Angles:	30 to 150
Critical DMEs:	Allowed
DoD Facilities:	Not included
Foreign Facilities:	Not included
High DMEs:	Included
Low DMEs:	Included
Terminal DMEs:	Included
Flight Check DMEs:	Not selected
Higher Altitudes:	Not Evaluated
Near Maximum Altitude:	Not Evaluated
Automatic ESVs:	Not enabled
Disabled DMEs:	None

DME/DME (Continued)										
DMEs Used										
#	Name	Lat/Lon	MAGVAR	Range	Type	Source	Critical	Status	Time	Distance
1	LLO	N30° 47' 46.83", W098° 47' 14.60"	8.0 E	40	L	IFPA	NO	Enabled	33.3 %	34.6 %
2	SAT	N29° 38' 38.51", W098° 27' 40.74"	8.0 E	130	H	IFPA	NO	Enabled	33.3 %	34.6 %
3	CSI	N29° 55' 20.48", W099° 12' 52.15"	8.0 E	130	H	IFPA	NO	Enabled	33.3 %	34.6 %

Flight Check DME Selection						
Distance [NM]	Selected DMEs					Alternate
0.0	LLO	CSI	SAT			
12.1						

Inertial Drift Segments			
#	Start Location	End Location	Length [NM]
1	N29° 45' 22.61", W098° 45' 25.40"	N29° 44' 17.90", W098° 22' 44.62"	22.6198

Available DMEs by Waypoints			
Waypoint Before	Waypoint After	DME List	Suggested DMEs
DNKIN	GERVN	SAT, CSI, LLO	
GERVN	ADDYY		
ADDYY	IXION		

DME DME Assessment Results for DNKIN1 path DNKIN_IXION

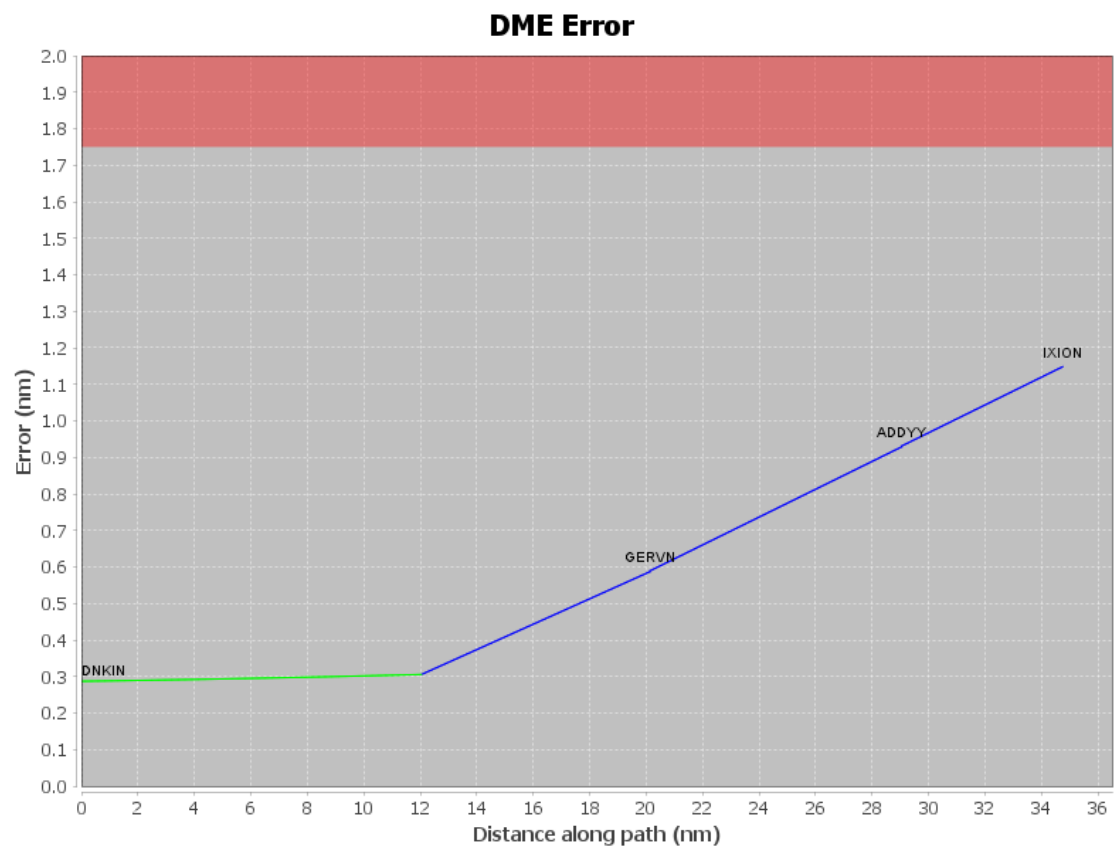
User Data Files

#	File Name
1	UserDMEsKSAT [IFPA] DNKIN1 RNAV STAR_20230118_0735 CST.udt

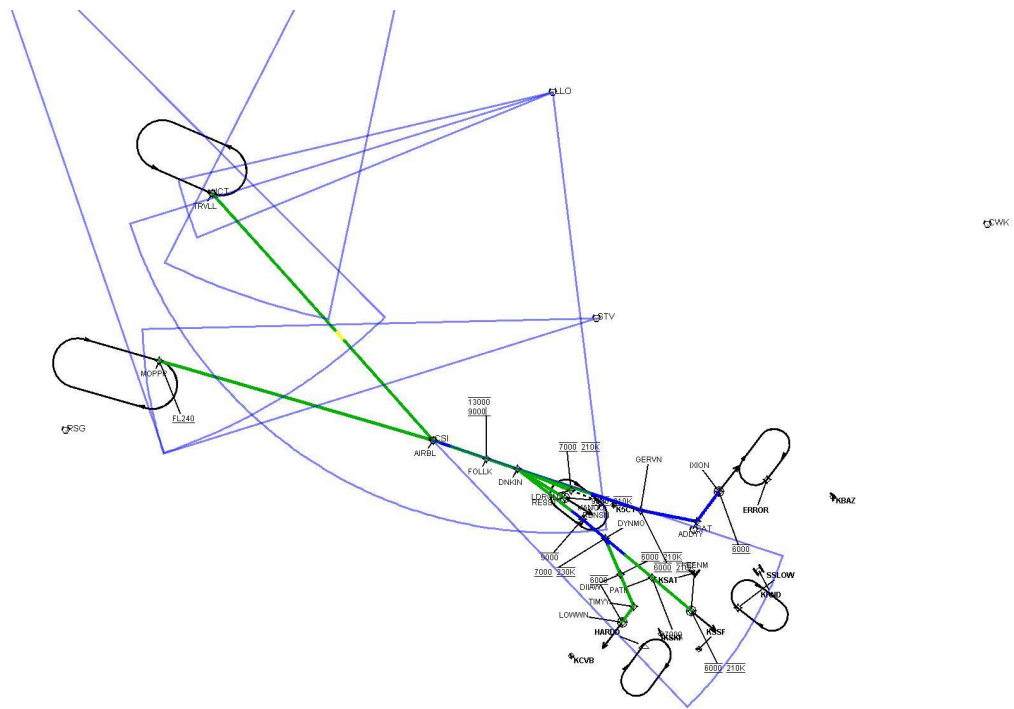
User DMEs

#	Name	Lat/Lon	MAGVAR	Range	Elevation [ft]	Frequency	Replaces	Status
1	CSI FAA 766740-17 CSI [IFPA]	N29° 55' 20.48", W099° 12' 52.15"	8.0 E	130	2079.3	117.5	CSI FAA 766740-17	
ESV:		Bearing [True]: 112.0° to 140.0° Bearing [Mag]: 104.0° to 132.0°				Arc Distance: Out to 57.0 NM Altitude: 4000.0 to 18000.0 ft		
2	LLO FAA 700387-15 LLO [IFPA]	N30° 47' 46.83", W098° 47' 14.60"	8.0 E	40	1206.6	108.2	LLO FAA 700387-15	
ESV:		Bearing [True]: 177.0° to 257.0° Bearing [Mag]: 169.0° to 249.0°				Arc Distance: Out to 68.0 NM Altitude: 5000.0 to 18000.0 ft		
3	LLO FAA 700387-018 LLO [IFPA]	N30° 47' 46.83", W098° 47' 14.60"	8.0 E	40	1206.6	108.2	LLO FAA 700387-018	
ESV:		Bearing [True]: 252.0° to 261.0° Bearing [Mag]: 244.0° to 253.0°				Arc Distance: Out to 59.0 NM Altitude: 8900.0 to 19300.0 ft		
4	STV FAA 970146-026 STV [IFPA]	N30° 12' 24.33", W098° 42' 20.72"	8.0 E	130	1530	113.8	STV FAA 970146-026	
ESV:		Bearing [True]: 257.0° to 273.0° Bearing [Mag]: 249.0° to 265.0°				Arc Distance: Out to 70.0 NM Altitude: 8900.0 to 16100.0 ft		
5	BWD FAA 212001-008 BWD [IFPA]	N31° 53' 33.30", W098° 57' 26.86"	8.0 E	40	1574.3	113.55	BWD FAA 212001-008	
ESV:		Bearing [True]: 196.0° to 211.0° Bearing [Mag]: 188.0° to 203.0°				Arc Distance: Out to 102.0 NM Altitude: 8900.0 to 19600.0 ft		
6	SJT FAA 704198-020 SJT [IFPA]	N31° 22' 29.84", W100° 27' 17.53"	10.0 E	130	1886.1	115.1	SJT FAA 704198-020	
ESV:		Bearing [True]: 139.0° to 165.0° Bearing [Mag]: 129.0° to 155.0°				Arc Distance: Out to 89.0 NM Altitude: 8900.0 to 16400.0 ft		

DME DME Assessment Results for DNKIN1 path DNKIN_IXION

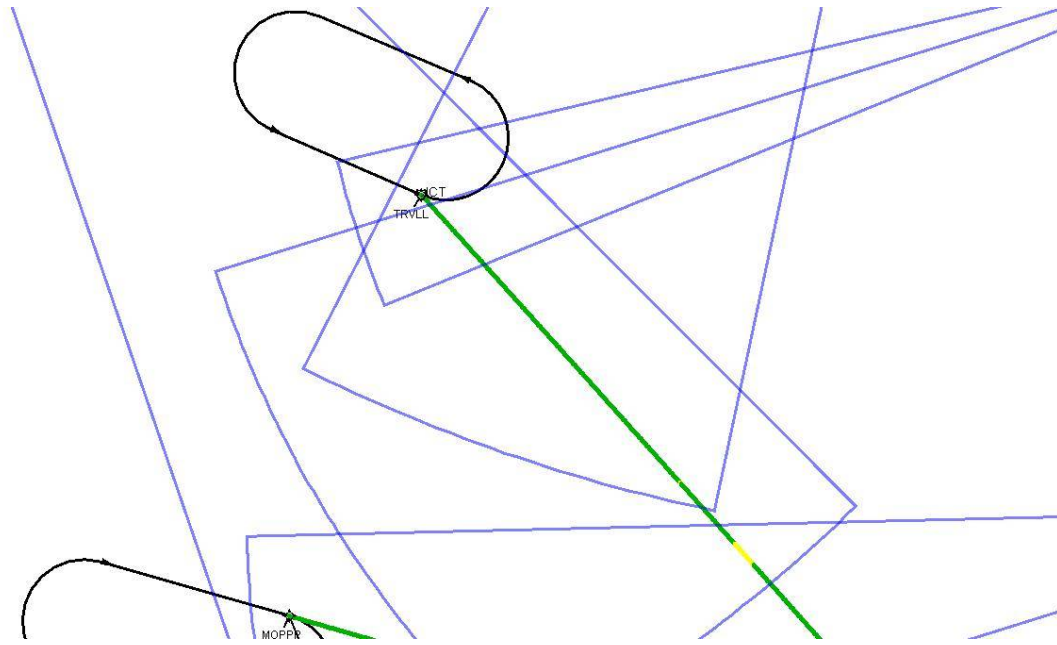


Graphic Depiction 1



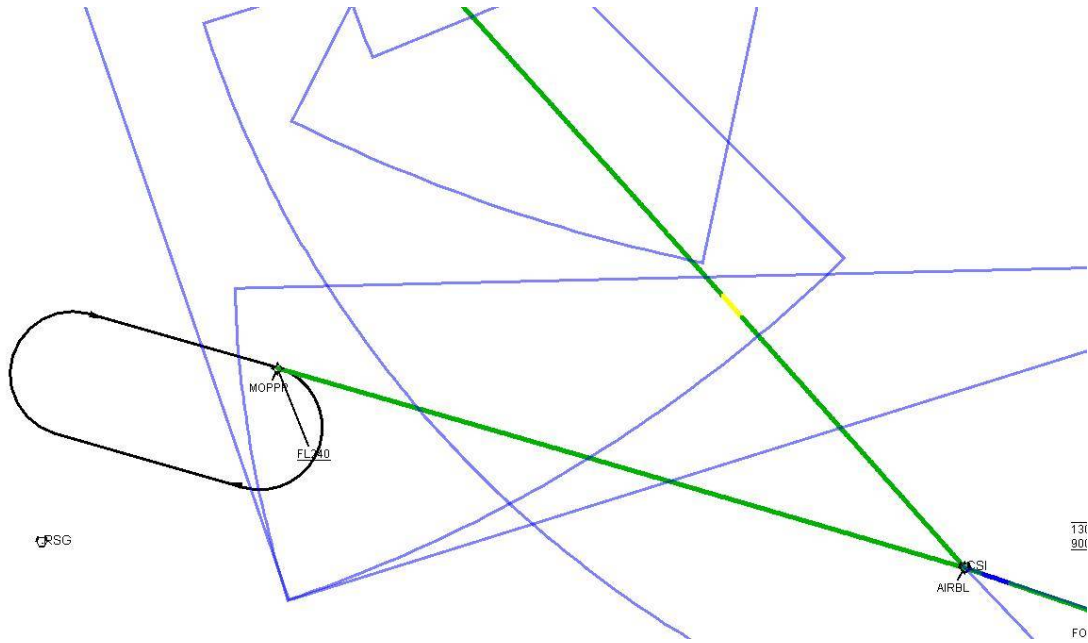
DME DME Assessment Results for DNKIN1 path DNKIN_IXION

Graphic Depiction 2



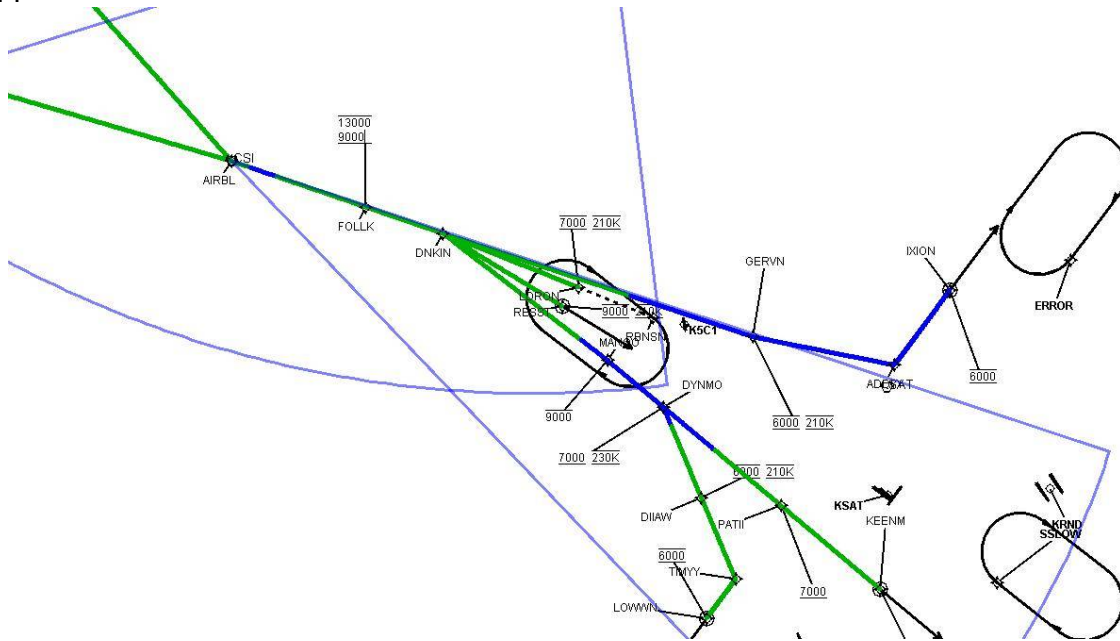
DME DME Assessment Results for DNKIN1 path DNKIN_IXION

Graphic Depiction 3



DME DME Assessment Results for DNKIN1 path DNKIN_IXION

Graphic Depiction 4



DME DME Assessment Results for DNKIN1 path DNKIN_IXION

Graphic Depiction 5

