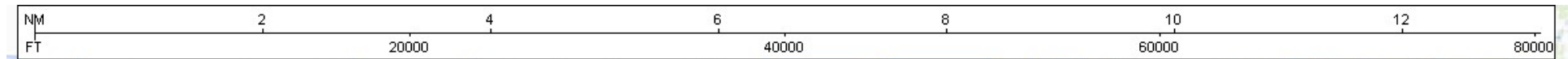


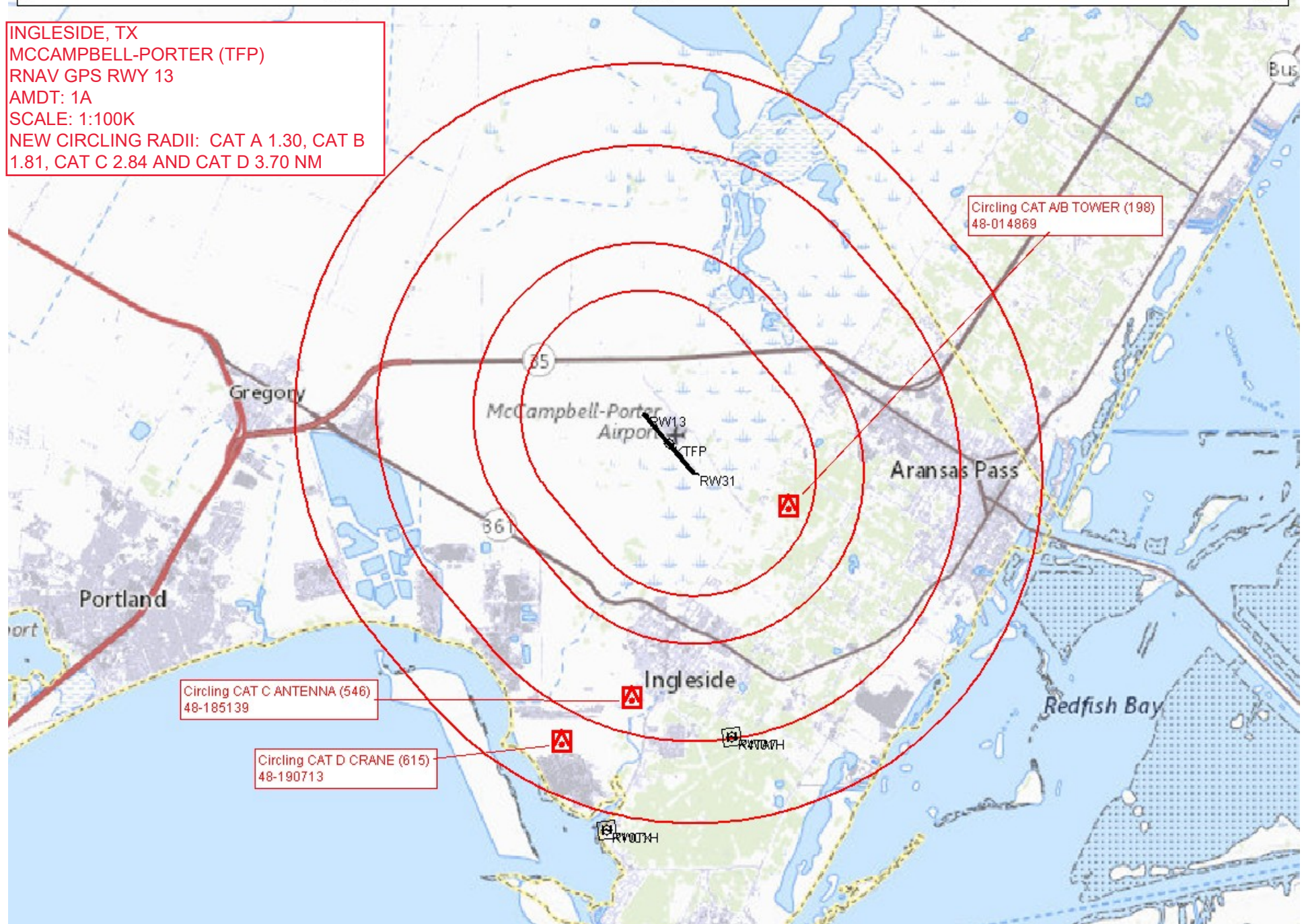
Flight Procedures Cover Page	Task Action: P-NOTAM	Task Type: IAP	Estimated Chart Date: 04/21/2022	APWS Task ID: 651A8FD9E1604AFE6199D25DC74B0F6	APWS Project ID: 0DB7378885344584A860C99184079B6F
Procedure: RNAV (GPS) RWY 13 AMDT 1A		Enroute: NO	Specialist: Marsh, Andre		Agreement Number:
Airport ID: KTFP			Airport City: INGLESIDE		State: TX
Facility ID:	Facility Type:	Flight Inspection Remark Type:			
<p>Procedure Comments: P-NOTAM CIRCLING RADII INCREASE CONTACT JASON KRETSCHMER, AJV-A421, 405-954-4019</p> <p style="text-align: center;"><i>Digitally signed by</i> <b>JASON KRETSCHMER</b> Mar 02, 2022</p>					

QUALITY  
47  
CHECKED

QUALITY  
38  
CHECKED



INGLESIDE, TX  
MCCAMPBELL-PORTER (TFP)  
RNAV GPS RWY 13  
AMDT: 1A  
SCALE: 1:100K  
NEW CIRCLING RADII: CAT A 1.30, CAT B  
1.81, CAT C 2.84 AND CAT D 3.70 NM



WAAS CH <b>78301</b> <b>W13A</b>	APP CRS <b>133°</b>	Rwy Idg <b>4999</b> TDZE <b>18</b> Apt Elev <b>18</b>
--	------------------------	---

RNAV (GPS) RWY 13

MCCAMPBELL-PORTER (TFP)

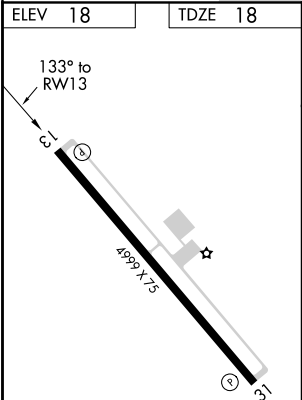
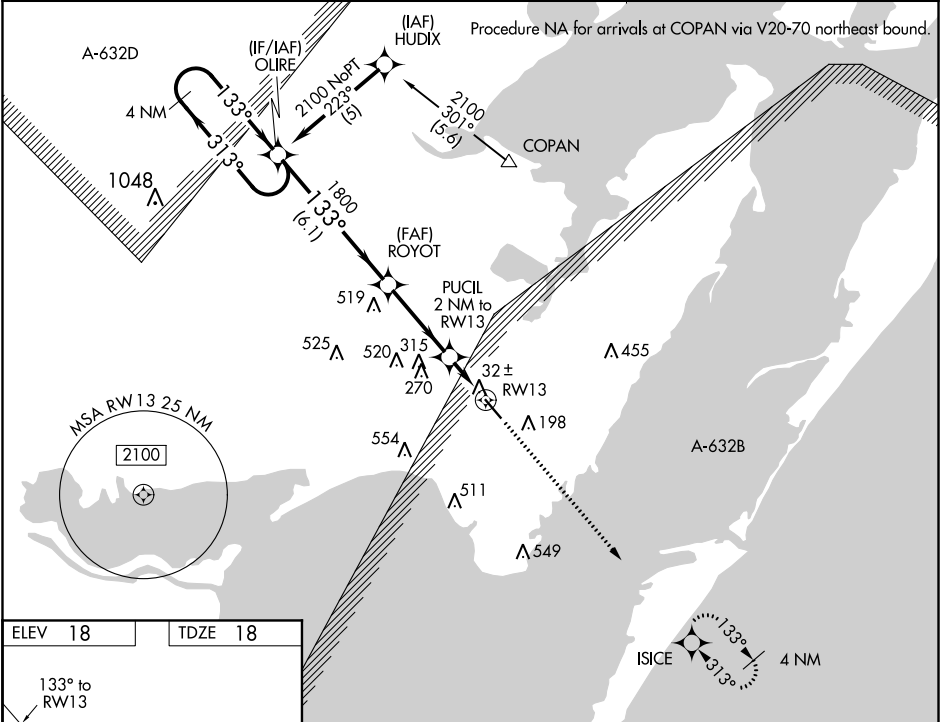
⚠

Baro-VNAV NA when using Mustang Beach altimeter setting. DME/DME RNP-0.3 NA. For uncompensated Baro-VNAV systems, LNAV/VNAV NA below -15°C (5°F) or above 49°C (120°F). When local altimeter setting not received, use Mustang Beach altimeter setting and increase LPV DA to 291 feet; LNAV/VNAV DA to 309 feet; and all MDAs 40 feet. VDP NA when using Mustang Beach altimeter setting.

❓

MISSED APPROACH:  
Climb to 2000 direct  
ISICE and hold.

AWOS-3 <b>118.775</b>	CORPUS APP CON <b>120.9 348.725</b>	UNICOM <b>122.7 (CTAF) 0</b>
--------------------------	--	---------------------------------



4 NM Holding Pattern OLIRE				2000	ISICE
2100 ← 313°				↑	✦
133° →				* LNAV only	
1800				* 0.8 NM to RW13	
GP 3.00° TCH 40				* 680	
6.1 NM 3.4 NM 1.2 0.8					
CATEGORY	A	B	C	D	
LPV DA		268-1	250 (300-1)		
LNAV/VNAV DA		286-1	268 (300-1)		
LNAV MDA		300-1	282 (300-1)		
CIRCLING	520-1	502 (600-1)	520-1½ 502 (600-1½)	580-2 562 (600-2)	

MIRL Rwy 13-31 0  
REIL Rwy 13 and 31

SC-3, 24 FEB 2022 to 24 MAR 2022

SC-3, 24 FEB 2022 to 24 MAR 2022