

| | | | | | |
|---|------------------------------|---|-------------------------------------|---|--|
| Flight Procedures Cover Page | Task Action: FLIGHT CHECK | Task Type: IAP | Estimated Chart Date: 01/22/2026 | APWS Task ID: 64A647EF791F4D84B2C4D476518D072E | APWS Project ID: D2C5C9D63113412E972AF2F7E547D270 |
| Procedure: RNAV (GPS) RWY 27 AMDT 2 | | Enroute: NO | Specialist: Bristow, Travis | | Agreement Number: |
| Airport ID: KMMH | | | Airport City: MAMMOTH LAKES | | State: CA |
| Facility ID: | Facility Type: | Flight Inspection Remark Type: New FC Slot | | | |
| <div>Procedure Comments: ACTIVE AIRPORT AND RUNWAY DATA USED. ESTABLISHED LPV AND LNAV/VNAV MINIMUMS. CONTACT CASEY HILL, AJV-A412, 405-905-5077.</div> <div><div>QUALITY 23 CHECKED</div><div>QUALITY 10 CHECKED</div></div> | | | | | |

FIG

RNAV (GPS) RWY 27
MAMMOTH YOSEMITE (MMH)

MISSED APPROACH: Climb to 8100 then climbing right turn to 13000 direct TEPRE and on track 018° to HATAG and on track 322° to NIKOL and hold.
*Missed approach requires minimum climb of 300 feet per NM to 8400.

PROTOTYPE: NOT
FOR NAVIGATION



REIL Rwy 27 **L**
MIRL Rwy 9-27 **L**

AUTOMATED AL-6841 RNAV (GPS) RWY 27
AUTOMATED AL-6841 RNAV (GPS) RWY 27

1:750,000
SW-2
15 JUL 2025
COMPILER: CG
REVIEWER:
DBL CHKR:
EFF: FIG



MAMMOTH YOSEMITE (MMH)

RNAV (GPS) RWY 27

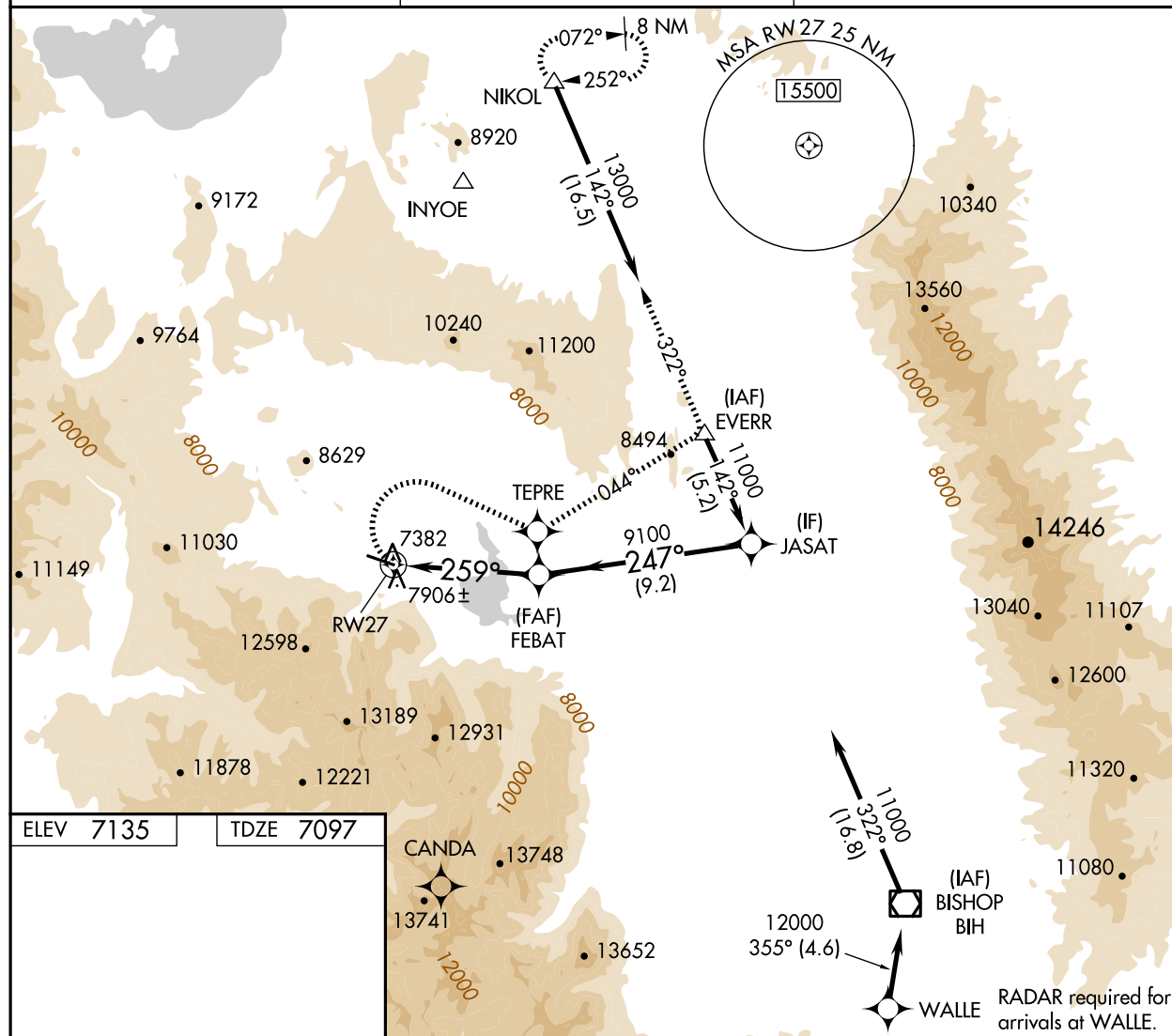
| | | |
|------------------------|-----------------------------|---|
| APP CRS 259° | Rwy Idg TDZE Apt Elev | 7000 7097 7135 |
|------------------------|-----------------------------|---|

OLD

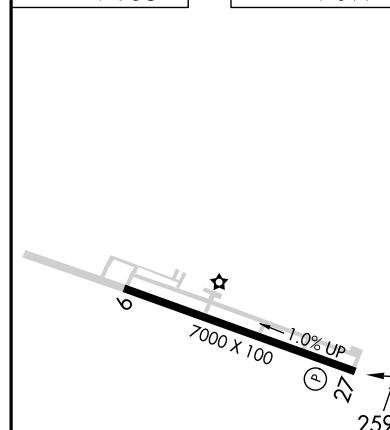
RNAV (GPS) RWY 27
MAMMOTH YOSEMITE (MMH)

| | | |
|--|--|---|
| <div style="text-align: center;">   </div> | <p>Circling NA at night. Circling NA south of Rwy 9-27. DME/DME RNP-0.3 NA. When local altimeter setting not received, procedure NA.</p> | <p>MISSED APPROACH: Climbing right turn to 13000 direct TEPRE and via track 044° to EVERR and via track 322° to NIKOL and hold.</p> |
|--|--|---|

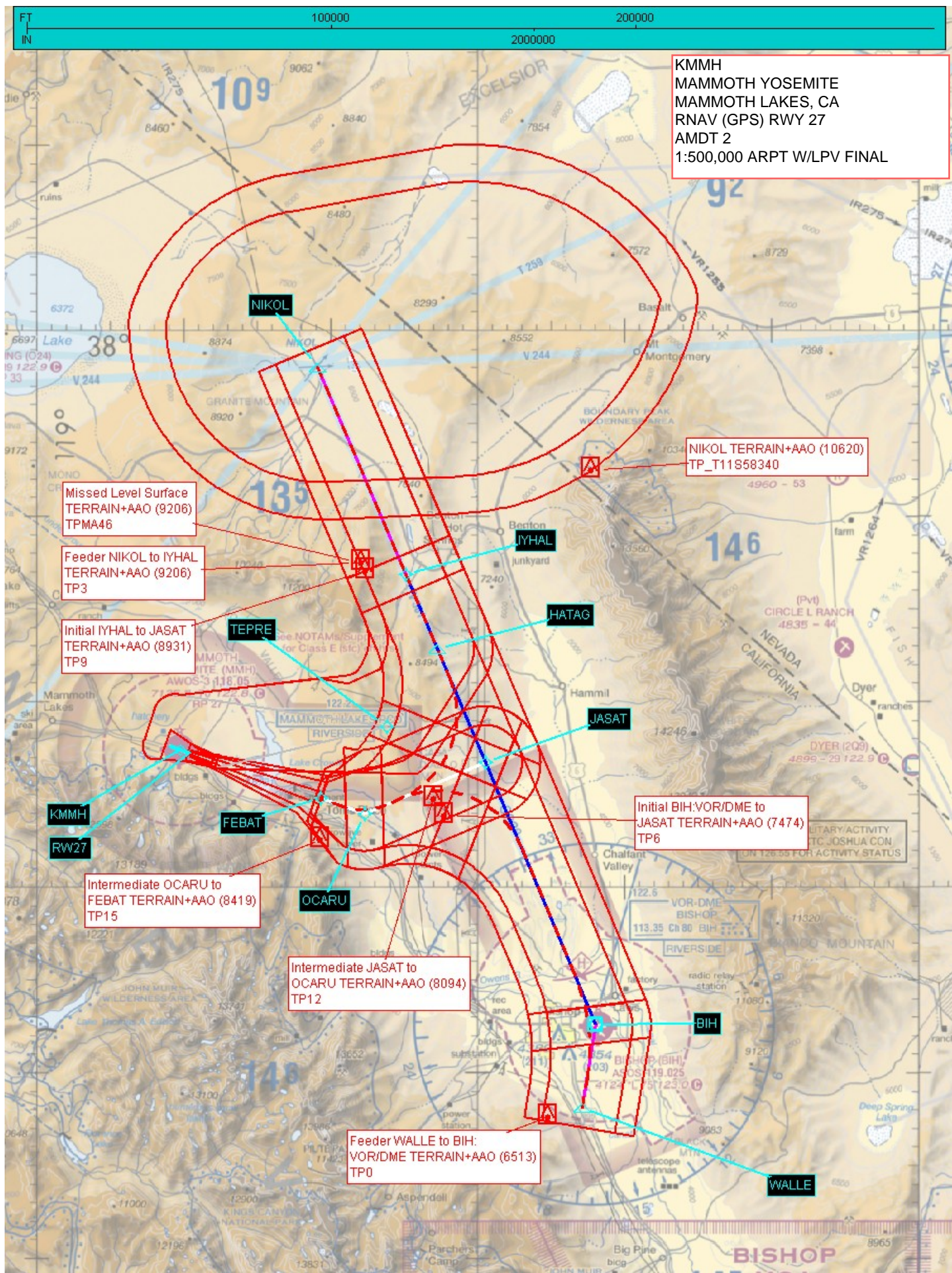
| | | |
|-------------------------|--|---------------------------------|
| AWOS-3 118.05 | OAKLAND CENTER 125.75 284.65 | UNICOM 122.8 (CTAF) 0 |
|-------------------------|--|---------------------------------|



| | | | | |
|------|------|--|------|------|
| ELEV | 7135 | | TDZE | 7097 |
|------|------|--|------|------|

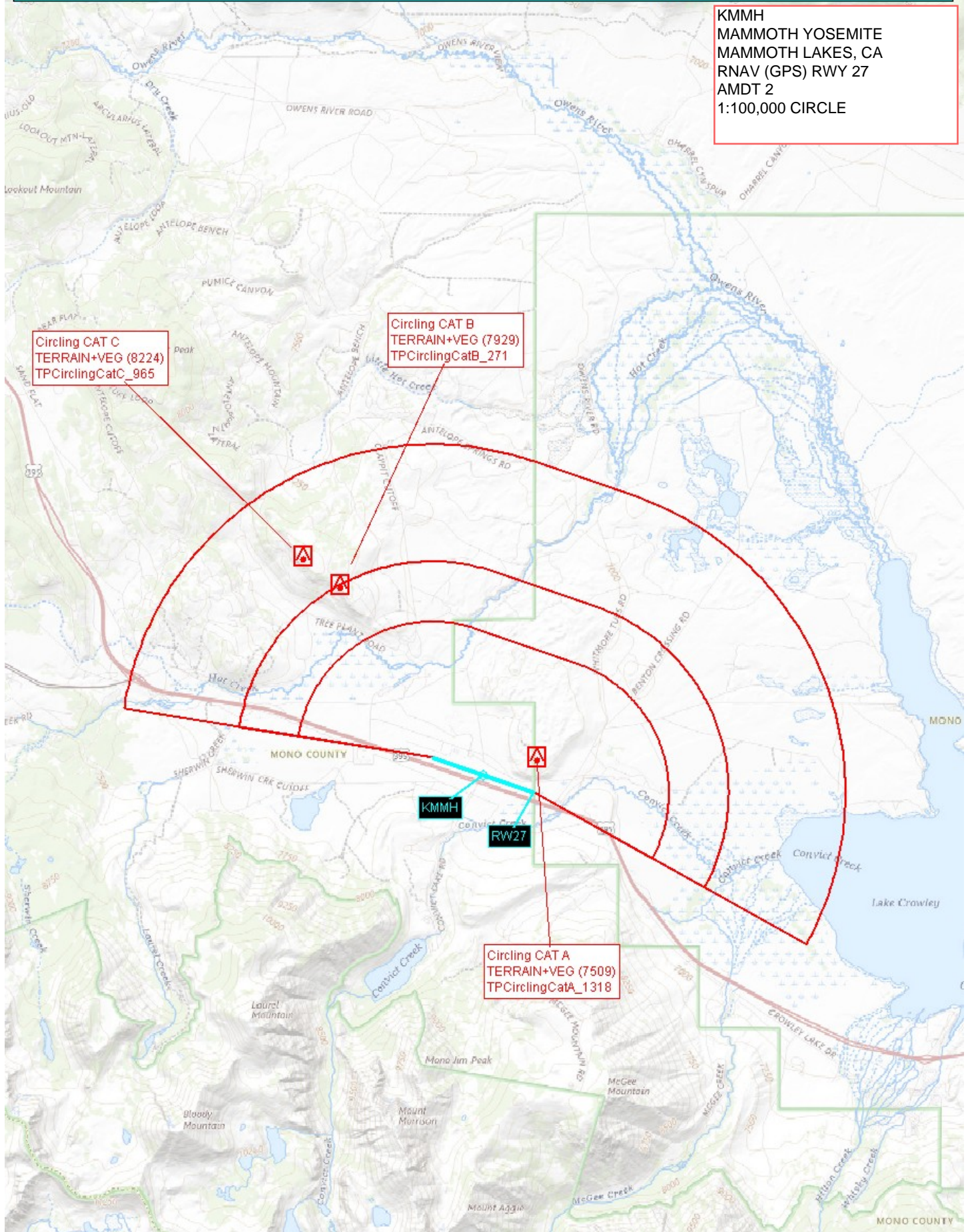


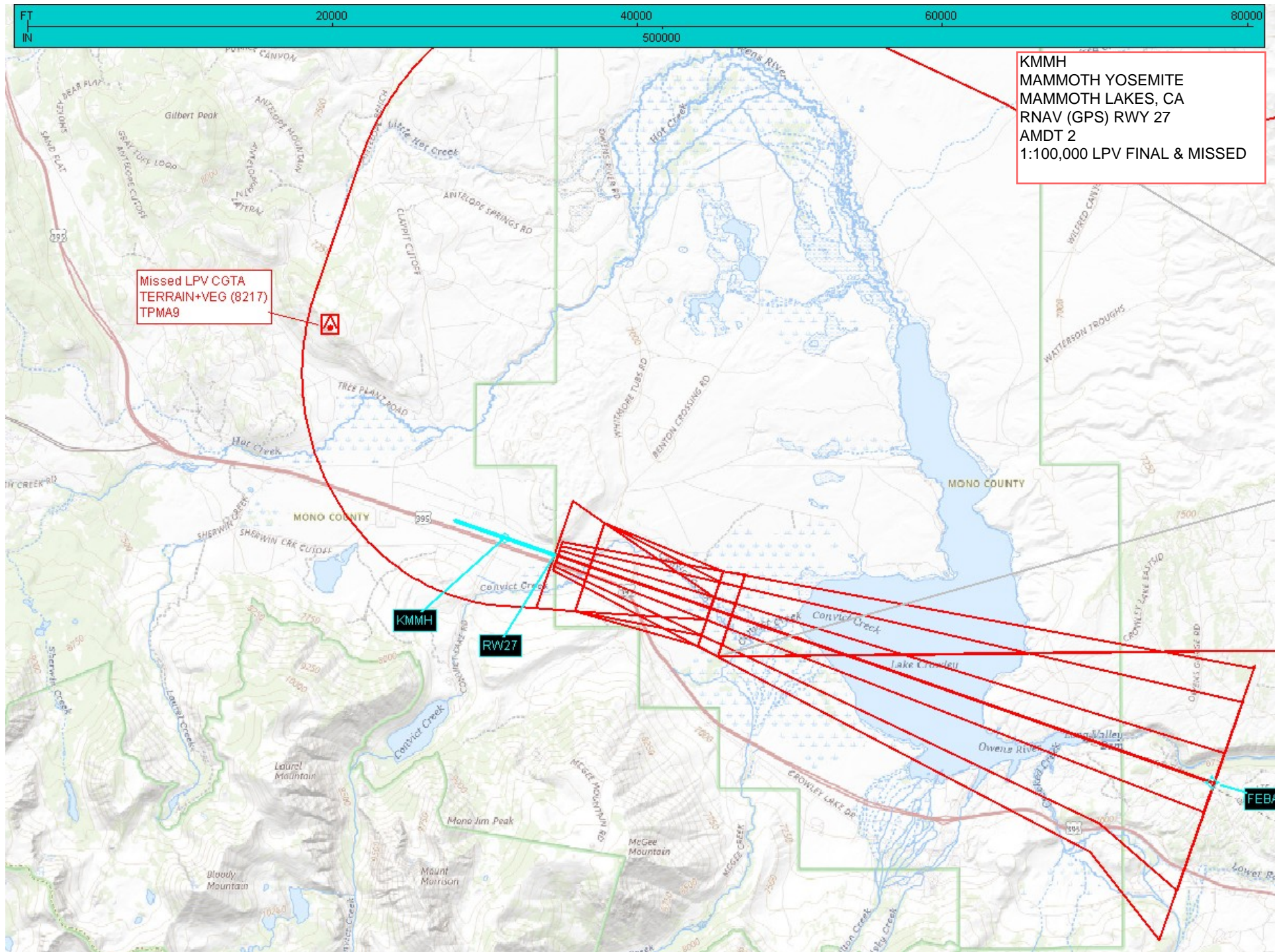
| | | | | | | | |
|----------|---------------------------|------------|---------------------------|------------|-------------------------|-------|-------|
| 13000 | TEPRE | tr 044° | EVERR △ | tr 322° | NIKOL △ | FEBAT | JASAT |
| | | | | | | | |
| CATEGORY | A | | B | | C | | D |
| LNAV MDA | 8380-1¼ 1283 (1300-1¼) | | 8380-1½ 1283 (1300-1½) | | 8380-3 1283 (1300-3) | | NA |
| CIRCLING | 8380-1¼ 1245 (1300-1¼) | | 8380-1½ 1245 (1300-1½) | | 8540-3 1405 (1500-3) | | NA |

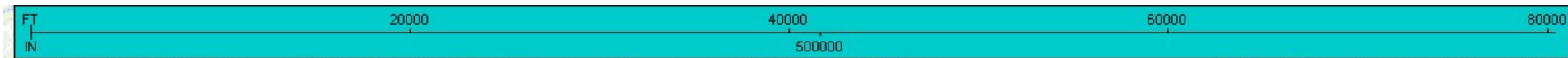




KMMH
MAMMOTH YOSEMITE
MAMMOTH LAKES, CA
RNAV (GPS) RWY 27
AMDT 2
1:100,000 CIRCLE







KMMH
MAMMOTH YOSEMITE
MAMMOTH LAKES, CA
RNAV (GPS) RWY 27
AMDT 2
1:100,000 LNAV/VNAV FINAL &
MISSED

