

Flight Procedures Cover Page	Task Action: P-NOTAM	Task Type: IAP	Estimated Chart Date: 03/25/2021	APWS Task ID: F388BE5E6F794B3B8C10F0CA7DFE4194	APWS Project ID: E2F723D6202149B0A6E4CC54C87D731F
Procedure: VOR RWY 3 AMDT 18A		Enroute: NO	Specialist: Lafferty, James		Agreement Number:
Airport ID: KMHK			Airport City: MANHATTAN		State: KS
Facility ID:	Facility Type:	Flight Inspection Remark Type:			
<div> <div>Procedure Comments:</div> <div> P-NOTAM This Cancels FDC 9/1795 Order 8260.3, chapter 2, New Circling Criteria Applied Contact Dave Teffeteller at 202-267-5177 </div> <div> <div>QUALITY</div> <div>23</div> <div>CHECKED</div> </div> </div>					

OLD

MANHATTAN, KANSAS

AL-5241 (FAA)

10266

VOR/DME MHK 110.2 Chan 39	APP CRS 031°	Rwy Idg TDZE 1056 Apt Elev 1066
--	------------------------	---

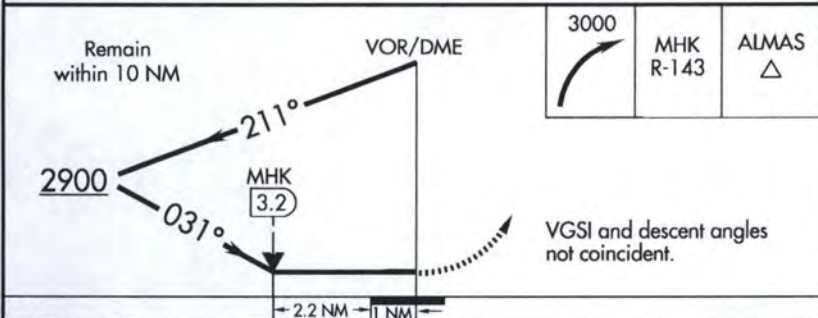
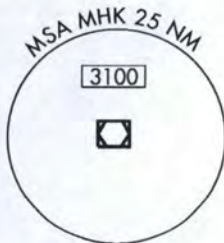
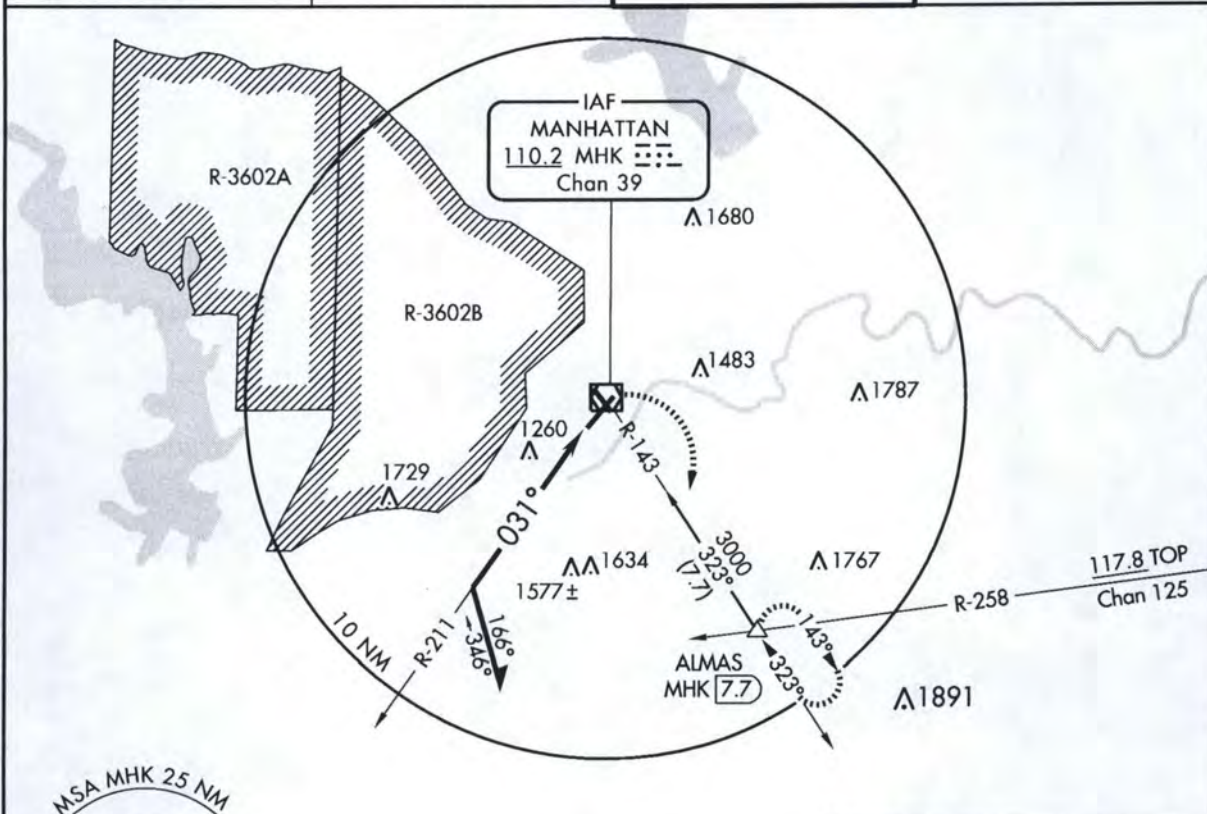
VOR RWY 3 MANHATTAN RGNL (MHK)

- ▼ Visibility reduction by helicopters NA. Circling NA west of Rwy 3-21. When local altimeter setting not received, use Marshall AAF altimeter setting and increase all MDA 20 feet. VDP NA with Marshall AAF altimeter setting.



MISSED APPROACH: Climbing right turn to 3000 via MHK VOR/DME R-143 to ALMAS INT/MHK 7.7 DME and hold.

ASOS 119.075	MARSHALL GCA 121.25 254.35	MANHATTAN TOWER ★ 118.55 (CTAF) 0	GND CON 121.85
------------------------	--------------------------------------	---	--------------------------



CATEGORY	A	B	C	D
S-3	1820-1 764 (800-1)	764 (800-1)	1820-1¾ 764 (800-1¾)	1820-2 764 (800-2)
CIRCLING	1820-1 754 (800-1)	1820-1¼ 754 (800-1¼)	1820-2¼ 754 (800-2¼)	1820-2½ 754 (800-2½)



MANHATTAN, KANSAS
Amdt 18 23SEP10

39°08'N - 96°40'W

MANHATTAN RGNL (MHK)
VOR RWY 3

NC-2, 23 SEP 2010 to 21 OCT 2010

NC-2, 23 SEP 2010 to 21 OCT 2010

