

Flight Procedures Cover Page	Task Action: P-NOTAM	Task Type: IAP	Estimated Chart Date: 03/20/2025	APWS Task ID: 64778058BB77457D89158A1393A5316C	APWS Project ID: E4D6674F832F474D8CF6D2E2B04E03BC
Procedure: RNAV (GPS) RWY 1 AMDT 0A		Enroute: NO	Specialist: Weston, Daniel		Agreement Number:
Airport ID: 7S6			Airport City: WHITE SULPHUR SPRINGS		State: MT
Facility ID:	Facility Type:	Flight Inspection Remark Type:			
<div>Procedure Comments: ACTIVE AIRNAV DATA USED. CLEARS NOTAM FDC 4/6752. PROCESSED IAW TECHNICAL SUPPORT GROUP (AJF-17) MEMO DATED 07/07/2021, SUBJECT: GUIDANCE FOR PROCEDURAL CHANGES REQUIRING FLIGHT INSPECTION/VALIDATION. CONTACT RAKE MCGRAW AJV-A422 405-954-8711.</div> <div><div>QUALITY 41 CHECKED</div><div>QUALITY 18 CHECKED</div></div>					

WAAS
CH 81848
W01A

APP CRS
008°

Rwy Idg
TDZE
Apt Elev

6100
5046
5065

OLD

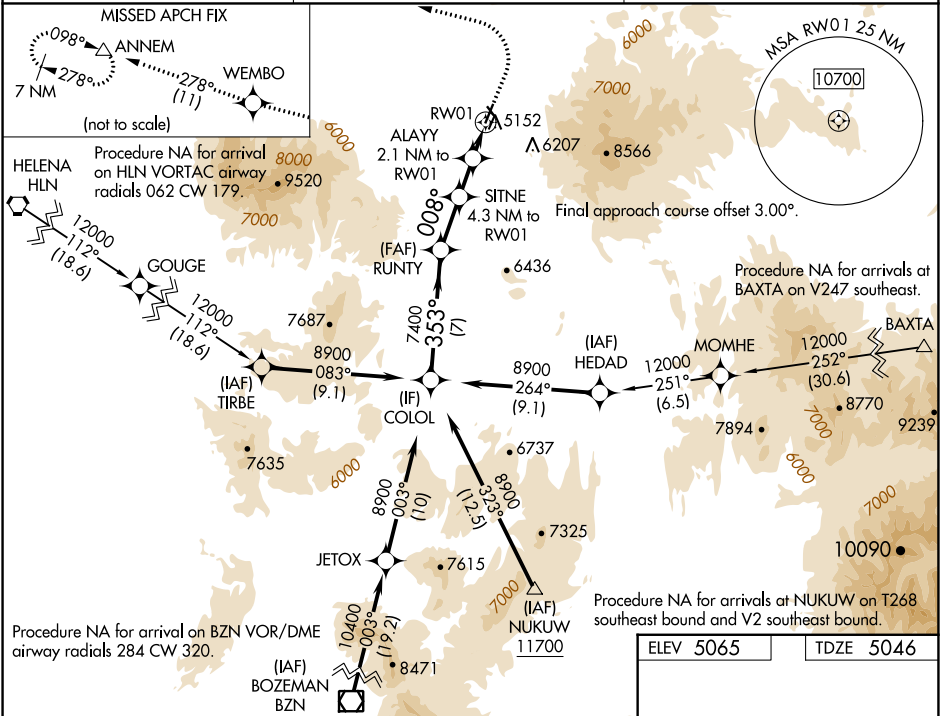
RNAV (GPS) RWY 1
WHITE SULPHUR SPRINGS (7S6)

RNP APCH - GPS.

For uncompensated Baro-VNAV systems, LNAV/VNAV NA below -25°C or above 54°C. Circling NA to Rwy's 13 and 31. Circling NA for Cats C and D east of Rwy 1-19. Circling NA for all Cats east of Rwy 1-19 at night.

MISSED APPROACH: Climb to 5500 then climbing left turn to 9400 direct WEMBO and on track 278° to ANNM and hold.

AWOS-3PT 118.525	SALT LAKE CENTER 133.4 285.4	CTAF 122.9
---------------------	---------------------------------	---------------



VGSI and RNAV glidepath not coincident (VGSI Angle 3.00/TCH 39).				
COLOL				
5500 9400 WEMBO tr 278° ANNM				
RUNTY				
8900 7400 353° 7400 008° 6440 5740				
SITNE 4.3 NM to RW01 ALAYY 2.1 NM to RW01 1.1 NM to RW01 RW01				
GP 3.00° TCH 39 7 NM 3 NM 2.2 NM 1 NM 1 NM				
CATEGORY	A	B	C	D
LPV DA	5296-1 250 (300-1)			
LNAV/VNAV DA	5313-1 267 (300-1)			
LNAV MDA	5420-1 374 (400-1)			
CIRCLING	5620-1 555 (600-1)	5920-1¼ 855 (900-1¼)	5920-2¾ 855 (900-2¾)	5920-3 855 (900-3)

