

Flight Procedures Cover Page	Task Action: FLIGHT CHECK	Task Type: IAP	Estimated Chart Date: 01/28/2021	APWS Task ID: 644BA4734C3E4C6BA5E74DC9FA9E3EB5	APWS Project ID: B096039505BA4132AE71B4421677EA9F
Procedure: LDA RWY 26L AMDT 6A		Enroute: NO	Specialist: Donahue, Liam		Agreement Number:
Airport ID: PHNL	Airport Name: DANIEL K INOUYE INTL		Airport City: HONOLULU		State: HI
Facility ID: EPC	Facility Type: LOC	Flight Inspection Remark Type: New FC Slot			
<p>Procedure Comments: CANCELS T- NOTAM 0/0149 PROCESSED IAW AIRCRAFT OPERATIONS GROUP (AJF-1000) MEMO, DATED JUNE 4, 2020, SUBJECT: FLIGHT INSPECTION OF NEW CONTROLLING OBSTACLES.</p> <p>CONTACT: DON LANIER, AJV, A431 MANAGER, 405.954-8242</p>					


11/5 BBLUE
Digitally signed by
MARY MCDONALD 12
Nov 13, 2020 

LOC/DME I-EPC 109.1 Chan 28	APP CRS 304°	Rwy Idg 12000 TDZE 10 Apt Elev 13
---	------------------------	--

LDA RWY 26L

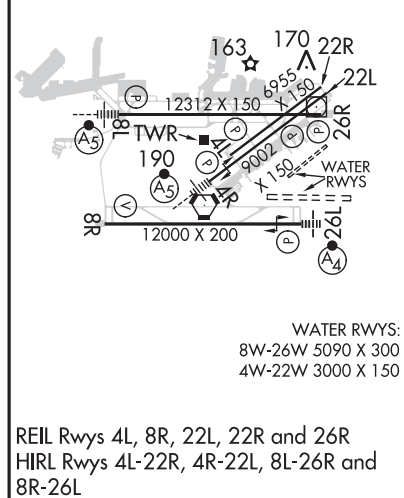
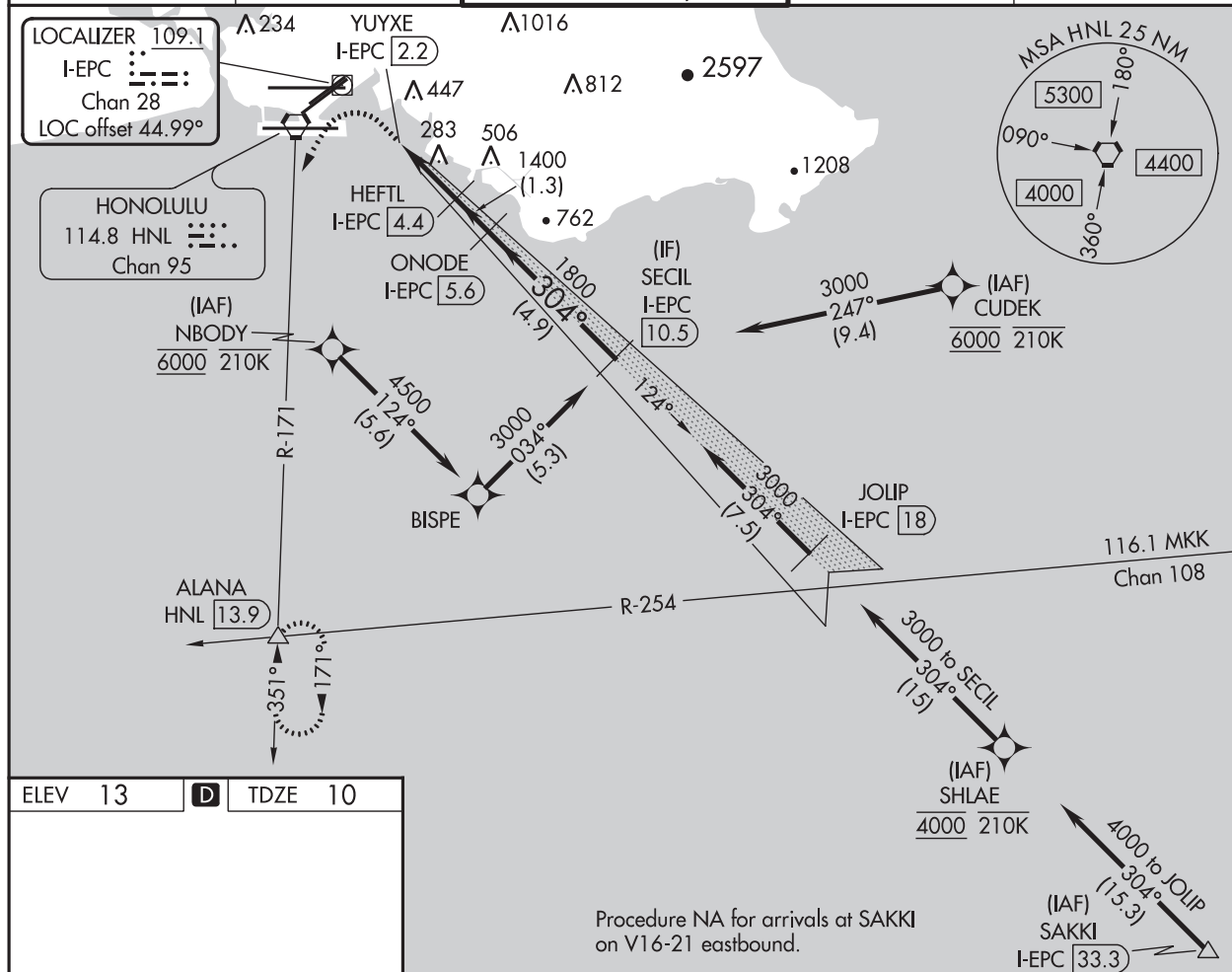
DANIEL K INOUEY INTL (HNL) (PHNL)

DME required. From CUDEK, NBODY, SHLAE: RNAV 1-GPS required.

NA Circling Rwy 22R NA at night. Circling NA to sea lanes 4W, 8W, 22W and 26W. NBODY transition, CUDEK transition, SHLAE transition NA for Cat E aircraft. Follow flasher lights to Rwy 26L. Procedure NA when ALS or SFL inop. Circling Cat E NA. Circling NA for Cats A and B northwest of Rwy 8L-22R. Circling NA for Cats C and D north of Rwy 8L-26R.

MALSF
MISSSED APPROACH: Climb to 600 then climbing left turn to 3000 on HNL VORTAC R-171 to ALANA INT/ HNL 13.9 DME and hold.

D-ATIS 127.9 251.15	HCF APPROACH 118.3 269.0	HONOLULU TOWER 118.1 257.8 123.9 273.575 (Rwy 8R/26L)	GND CON 121.9 348.6	CLNC DEL 121.4 281.4
-------------------------------	------------------------------------	---	-------------------------------	--------------------------------



ELEV 13	TDZE 10	Procedure NA for arrivals at SAKKI on V16-21 eastbound.				
600	3000	ALANA	VGSI and descent angles not coincident (VGSI Angle 3.00/TCH 75).			SECIL I-EPC 10.5
HNL R-171						
Use I-EPC DME when on the localizer course.						
CATEGORY	A	B	C	D	E	
S-26L	600-2 590 (600-2)					
CIRCLING	600-2½ 587 (600-2½)	640-2½ 627 (700-2½)	760-2½ 747 (800-2½)	1260-3 1247 (1300-3)	NA	

PAC, 10 SEP 2020 to 05 NOV 2020

PAC, 10 SEP 2020 to 05 NOV 2020

