

Flight Procedures Cover Page	Task Action: FLIGHT CHECK	Task Type: SID	Estimated Chart Date: 07/11/2024	APWS Task ID: 62F01E763D4C46DDA72E3DE3730A0A53	APWS Project ID: 7AB4963D873447588CD5E3A50156708A
Procedure: SID LOKRD ONE (RNAV) LOUISVILLE KY KSDF		Enroute: YES	Specialist: Melton, William		Agreement Number:
Airport ID: KSDF			Airport City: LOUISVILLE		State: KY
Facility ID:	Facility Type:	Flight Inspection Remark Type: New FC Slot			
<div>Procedure Comments:</div> <div>ACTIVE DATA USED FOR KSDF CONTACT MIKE GARRITY (405)954-5602. ESV: LEXINGTON (HYK) DME APPROVAL LETTER RWY 35L TO ERLWN CLIMB GRADIENT</div> <div>04/11/24: THIS IS AN UPDATED COPY OF THE FORM DEVELOPED ON 03/04/24. 1. UPDATED MEA'S FROM 2900 AND 4300 RESPECTIVELY TO 10000. 2. ADDED REMARK "MEA'S ALTITUDES DERIVED FROM DME/DME/IRU SOLUTIONS WITH AVAILABLE ESV'S WITHOUT CRITICAL DME'S".</div> <div>05/01/24: THIS IS AN UPDATED COPY OF THE FORM DEVELOPED ON 03/04/24. 1. 8260-15B: DELETED DO NOT CHART MOCA FROM 8260-15B REMARKS - CORRECT ADMINISTRATIVE ERROR. 2. 8260-15B: DP ROUTE DESCRIPTION: RWY 35L: ADDED "THEN ON TRACK 152.72 TO CROSS HLLYY AT OR ABOVE 8000" AND CHANGED TRACK TO LOKRD FROM 152.72 TO 152.76 - PER FC RECOMMENDATION AND ATC/FPT APPROVAL. 3. 8260-15C: RW35L: ADDED SEGMENT FROM MDJAE-HLLYY-LOKRD AND CHANGED LOKRD TC AND DIST FROM 147.72/32.83 TO 147.76/27.3 - PER FC RECOMMENDATION AND ATC/FPT APPROVAL. 4. P FILE: UPDATED PRO RUN TO REPLACE RWY 35R FIX GRIPZ WITH BAALK. 5. S FILE: INSERTED NEW MAP FOR RWY 35L SHOWING HLLYY ON TRANSITION.</div>					

QUALITY
20
CHECKED

QUALITY
41
CHECKED

FIPC BASIC FORM						
PROCEDURE: SID LOKRD ONE (RNAV) LOUISVILLE KY KSDF			AIRPORT NAME: LOUISVILLE MUHAMMAD ALI INTL		AIRPORT ID: KSDF	SPECIAL CONTROL NO: AG-03-275-24
FAC ID: LOKRD1		CITY: LOUISVILLE			ST: KY	ORIG CHART DATE: 07/11/2024
DFL TYPE: PROC/D	THIRD PARTY: <input type="checkbox"/> YES	EST. TIME ON SITE: 1.0	REIMB. NUMBER:	PTS TASK ID: 62F01E763D4C46DDA72E3DE3730A0A53		
PREFLIGHT NOTES						
REVIEWER: jeffrey eckman					DATE: 04/16/2024	
COMMENTS: -P File for RWY 35R has GRIPZ listed instead of BAALK. Please correct DME/DME files so DME verification can be completed. -There was a remark that procedures forgot to have removed, "DO NOT CHART MOCA", on the following procedures.					CHECK ONE: <input type="checkbox"/> FLT CK REQ <input type="checkbox"/> NFCR <input checked="" type="checkbox"/> REJECT <div style="border-top: 1px solid black; display: flex; justify-content: space-between; padding: 2px 5px;"> YES NO </div> CPV COMPLETE? <div style="border-top: 1px solid black; display: flex; justify-content: space-between; padding: 2px 5px;"> X </div>	
PROCEDURE RESULTS						
INSPECTION DATE: 04/26/2024	CREW #: VN327	N #: N79	INSTRUMENT PROCEDURE STATUS: <input type="checkbox"/> SAT <input checked="" type="checkbox"/> SAT W/CHANGES <input type="checkbox"/> UNSAT		ARINC CODING: <input checked="" type="checkbox"/> SAT <input type="checkbox"/> SAT/GOLD <input type="checkbox"/> UNSAT	
FLIGHT INSPECTOR SIGNATURE: jeffrey eckman @ 04/26/2024 17:32			PRINTED NAME: ECKMAN, JEFFREY ALAN			NOTAM INITIATED? <input type="checkbox"/> YES <input checked="" type="checkbox"/> NO
FLIGHT INSPECTOR REMARKS: Departure leg from RWY 29 includes HLLYY (MDJAE - HLLYY - LOKRD) in FMS coding and on FAA form 8260-15C. RWY 35L does not include HLLYY (MDJAE - LOKRD) on FAA Form 8260-15C but it was included in FMS coding. Recommend adding MDJAE - HLLYY - LOKRD to RWY 35L FAA Form 8260-15C with the AT/ABOVE 8000 note as well unless there is a reason it cannot be added. This will simplify the FIG for that leg too. If unable, then the ARINC Coding (FMS coding) needs to be corrected to show the requested MDJAE - LOKRD.						
IN-FLIGHT OBSTACLE REPORT						
OBSTRUCTION ID #:	COORDINATES OR LOCATION:	GNSS ALTITUDE (MSL):	BAROMETRIC ALTITUDE (MSL):	HEIGHT ABOVE GROUND LEVEL:		

ESV Details

Originating Office :AJV-C2		Airspace Docket Number :		Request Type :Establish		
Facility Data						
Chart Name:LEXINGTON		City:LEXINGTON		Ident:HYK		State:KY
Type/Class: DMER		Frequency: M1160		Reference Number: 23105020		
Extended Service Volume Data: (Requesting Officer)						
ESV ID	Radial 1	Radial 2	Distance	Minimum Altitude	Maximum Altitude	
FAA 680420 - 039	231	266	54	36	191	
Requirement: DME COVERAGE AND MITIGATE CRITICAL DMES FOR LOKRD SID						
Signature:Medina Jose		Routing Symbol:				Date:10/20/2023
Extended Service Volume Data: (FMO)						
ESV ID	Radial 1	Radial 2	Distance	Minimum Altitude	Maximum Altitude	Action Type
FAA 680420 - 039	231	266	54	36	191	APPROVE
Requirement/Remarks: DME COVERAGE AND MITIGATE CRITICAL DMES FOR LOKRD SIDAPPROVED. FREQ. PROTECTION & FIELD STRENGTH. PENDING FLIGHT INSPECT @ REQUIRED. DIST. & MIN ALT..						
Signature:Demas Tariku		Routing Symbol:			Date:10/26/2023	
Extended Service Volume Data: (Super FMO)						
ESV ID	Radial 1	Radial 2	Distance	Minimum Altitude	Maximum Altitude	Action Type
FAA 680420 - 039	231	266	54	36	191	APPROVE
Requirement/Remarks: DME COVERAGE AND MITIGATE CRITICAL DMES FOR LOKRD SIDAPPROVED. FREQ. PROTECTION & FIELD STRENGTH. PENDING FLIGHT INSPECT @ REQUIRED. DIST. & MIN ALT..						
Signature:Hughes Dennis		Routing Symbol:			Date:10/27/2023	
Extended Service Volume Data: (FIFO)						
ESV ID	Radial 1	Radial 2	Distance	Minimum Altitude	Maximum Altitude	Action Type
FAA 680420 - 039	231	266				
Requirement/Remarks:						
Signature:		Routing Symbol:			Date:	



Federal Aviation Administration

Memorandum

Date: Nov 14, 2023
To: Tom Lattimer, Airspace Manager CSA PBN Team
From: Jeffrey Chester, TCID Airspace and Procedures Manager
Prepared by: Steven Pullen, Senior ATC Specialist, NAVTAC Support
Subject: Letter of Approval Request LOKRD SID, KSDF

KSDF LOKRD Standard Instrument Departure (SID): RWY35L to ERLWN

Currently, FAAO 8260.46J, para 2-1-1e(2)(b)2, the maximum permissible climb gradient is 500 ft/nm. The climb gradient (758.80 ft/NM) from BUHBA to ERLWN is greater than the maximum permissible gradient allowed. Flight Standards approval is required.

The LOKRD SID serves Louisville Muhammad Ali International Airport. The climb gradient of 758.80 ft/NM from BUHBA to ERLWN is calculated from altitude of at or above 4,000ft MSL at BUHBA climbing to an altitude of at or above 8,000ft MSL at ERLWN, over a distance 5.27NM. However, the gradient over multiple fixes is within the maximum permissible climb gradient. From the DER of RWY35L to ERLWN is a track distance of 16.00NM. This equates to a climb gradient of 500.00 ft/NM.

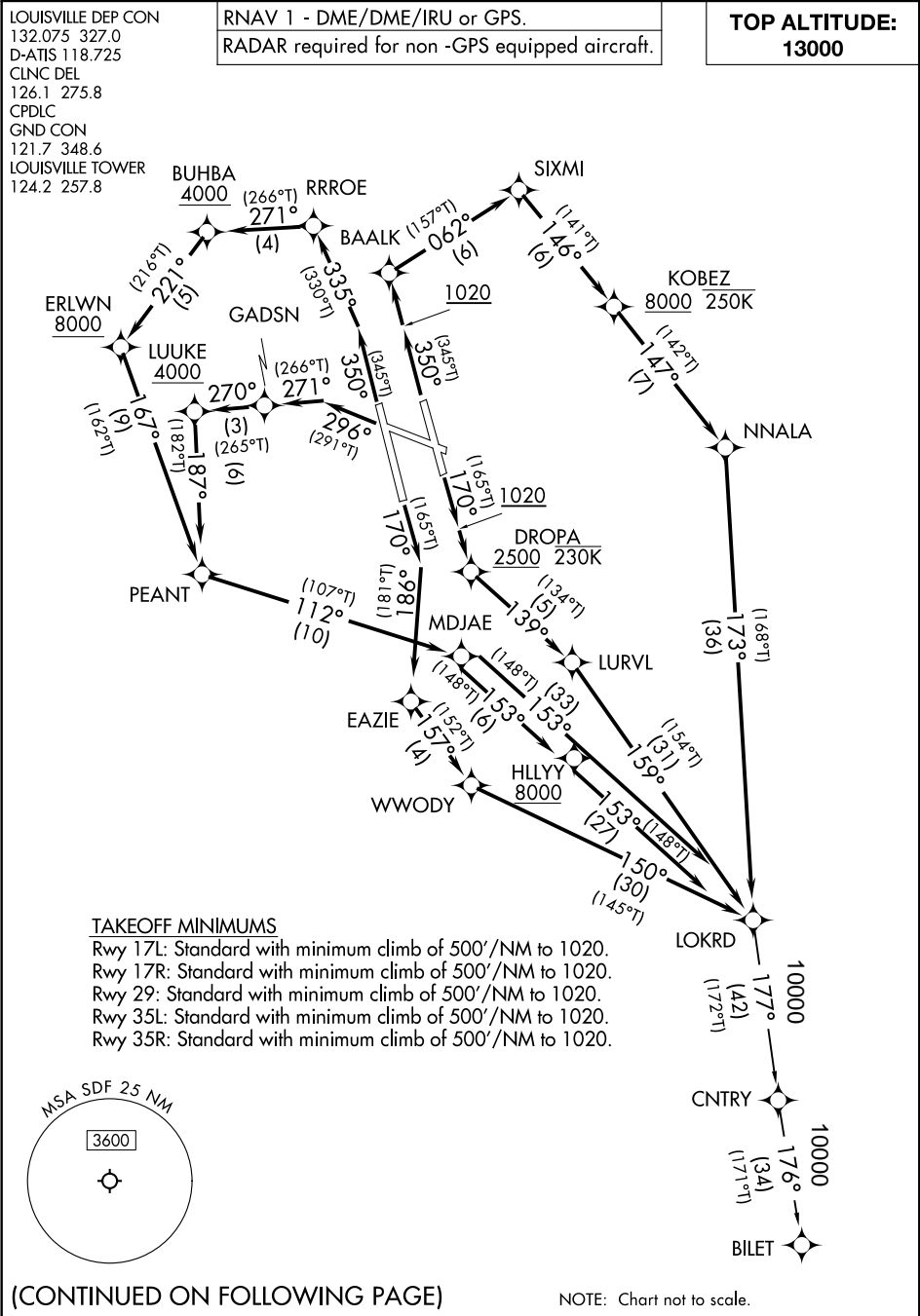
SIM data supports the overall profile and lateral design. Industry indicates that the procedure can be managed without increased energy management actions by the flight crew.

Therefore, ZID is requesting a Letter of Approval to utilize the climb gradient to ERLWN (At or above 8,000ft MSL) resulting in a climb gradient of 758.80 ft/NM as developed for the LOKRD SID.

Sincerely,

JEFFREY W
CHESTER

Digitally signed by
JEFFREY W CHESTER
Date: 2023.11.16
14:18:03 -05'00'





DEPARTURE ROUTE DESCRIPTION

TAKEOFF RUNWAY 17L: Climb on heading 170° to 1020, then direct DROPA at or above 2500 and at or below 230K, then on track 139° to LURVL, then on track 159° to LOKRD, thence ...

TAKEOFF RUNWAY 17R: Climb on heading 170° to intercept course 186° to EAZIE, then on track 157° to WWODY, then on track 150° to LOKRD, thence ...

TAKEOFF RUNWAY 29: Climb on heading 296° to intercept course 271° to GADSN, then on track 270° to cross LUUKE at or above 4000, then on track 187° to PEANT, then on track 112° to MDJAE, then on track 153° to cross HLLYY at or above 8000, then on track 153° to LOKRD, thence ...

TAKEOFF RUNWAY 35L: Climb on heading 350° to intercept course 335° to RRROE, then on track 271° to cross BUHBA at or above 4000, then on track 221° to cross ERLWN at or above 8000, then on track 166° to PEANT, then on track 112° to MDJAE, then on track 153° to cross HLLYY at or above 8000, then on track 153° to LOKRD, thence ...

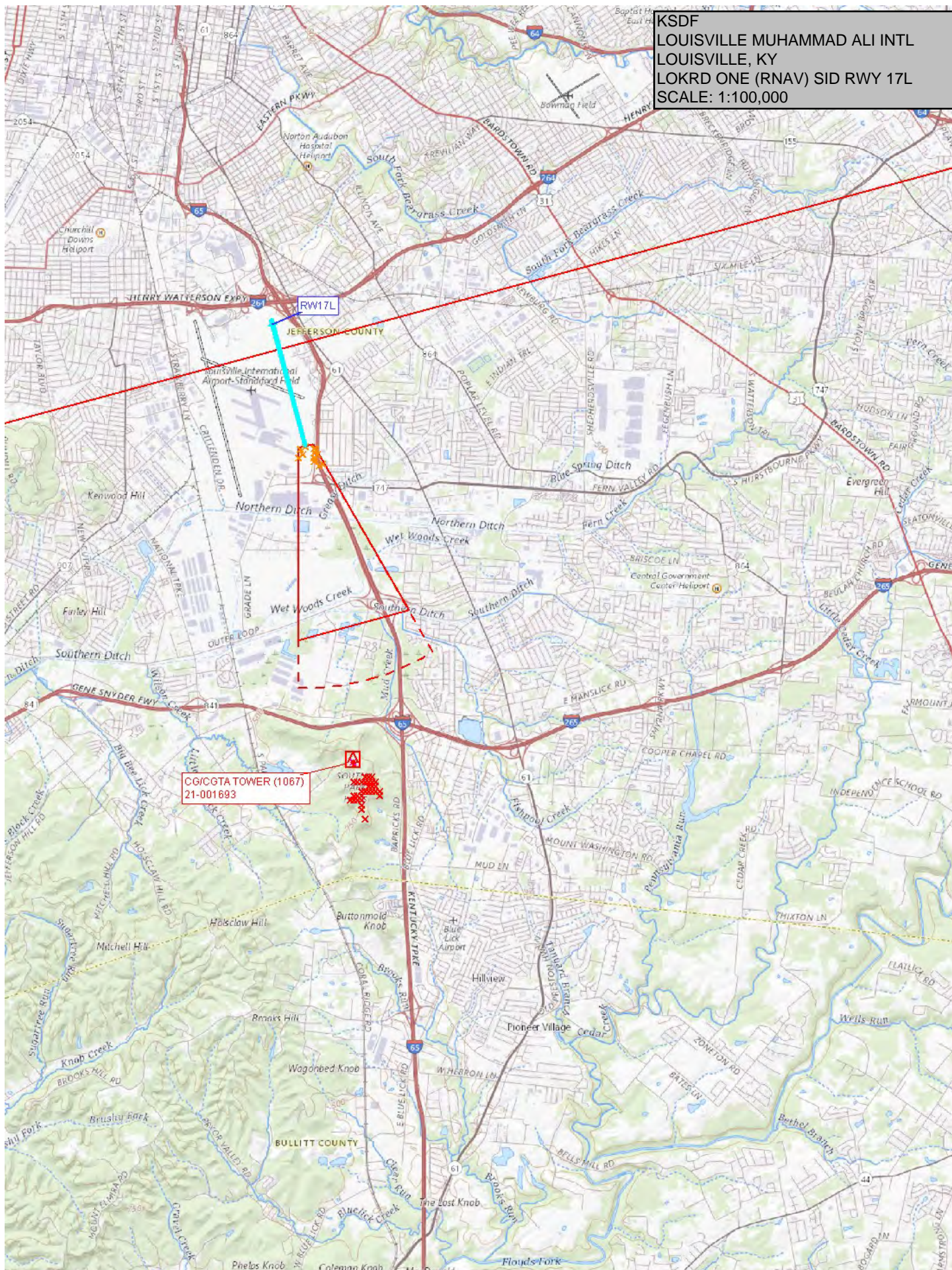
TAKEOFF RUNWAY 35R: Climb on heading 350° to 1020, then direct BAALK, then on track 062° to SIXMI, then on track 146° to cross KOBZ at or above 8000 and at or below 250K, then on track 147° to NNALA, then on track 173° to LOKRD, thence ...

... then on transition. Maintain 13000. Expect filed altitude 10 minutes after departure.

BILT TRANSITION (LOKRD1.BILET)

PROTOTYPE-NOT FOR NAVIGATION

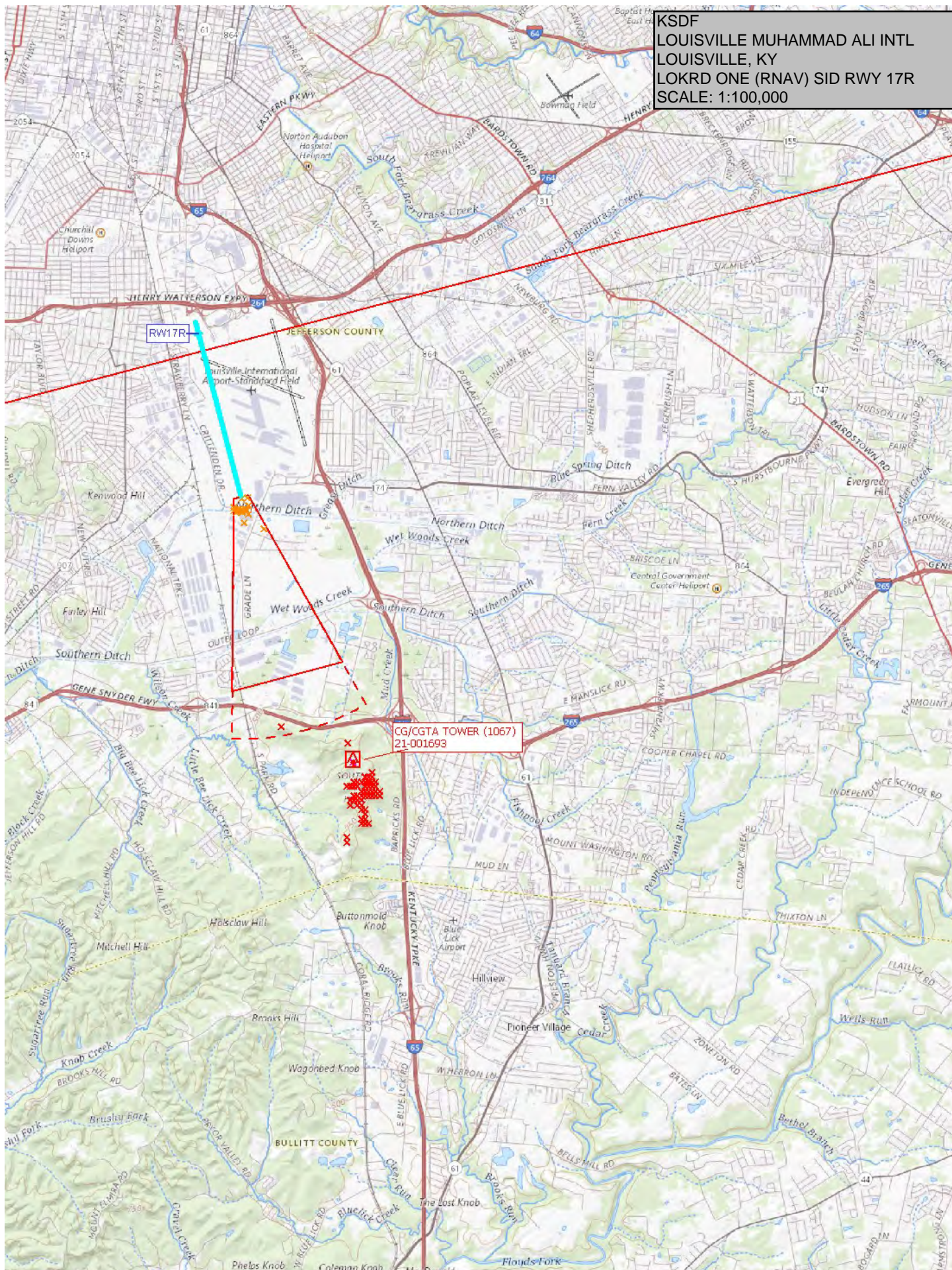
KSDF
LOUISVILLE MUHAMMAD ALI INTL
LOUISVILLE, KY
LOKRD ONE (RNAV) SID RWY 17L
SCALE: 1:100,000



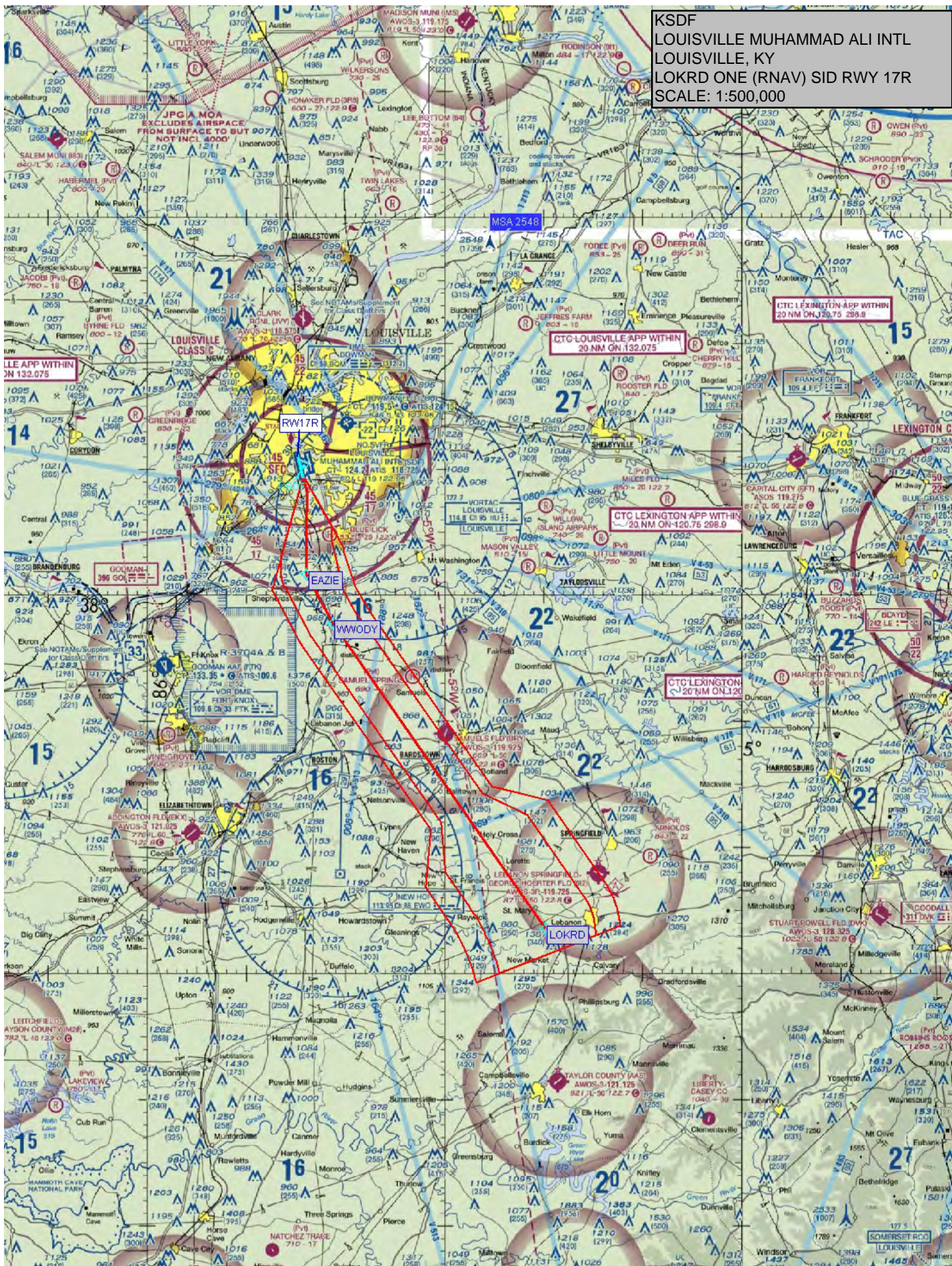
KSDF
LOUISVILLE MUHAMMAD ALI INTL
LOUISVILLE, KY
LOKRD ONE (RNAV) SID RWY 17L
SCALE: 1:500,000



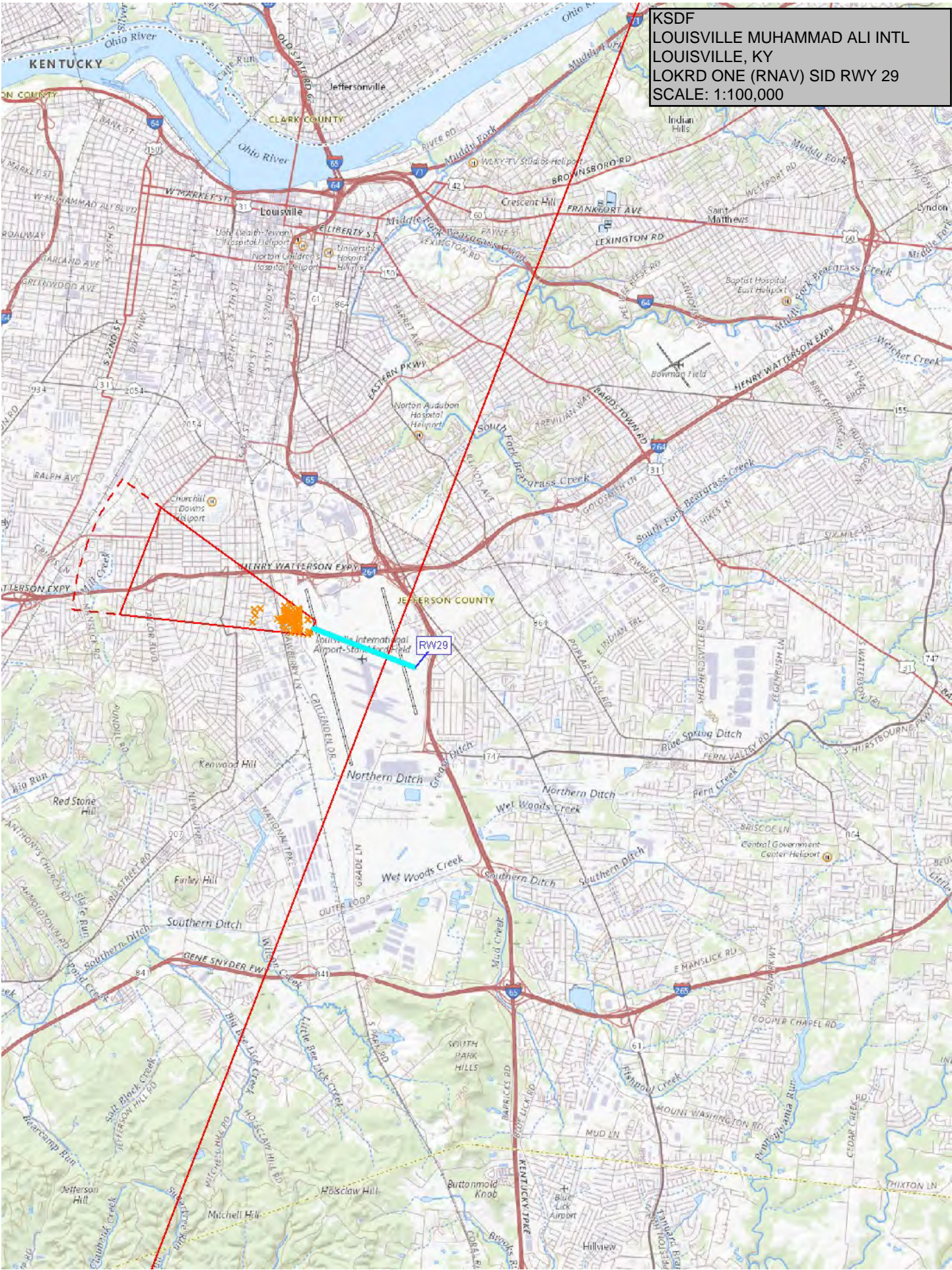
KSDF
LOUISVILLE MUHAMMAD ALI INTL
LOUISVILLE, KY
LOKRD ONE (RNAV) SID RWY 17R
SCALE: 1:100,000



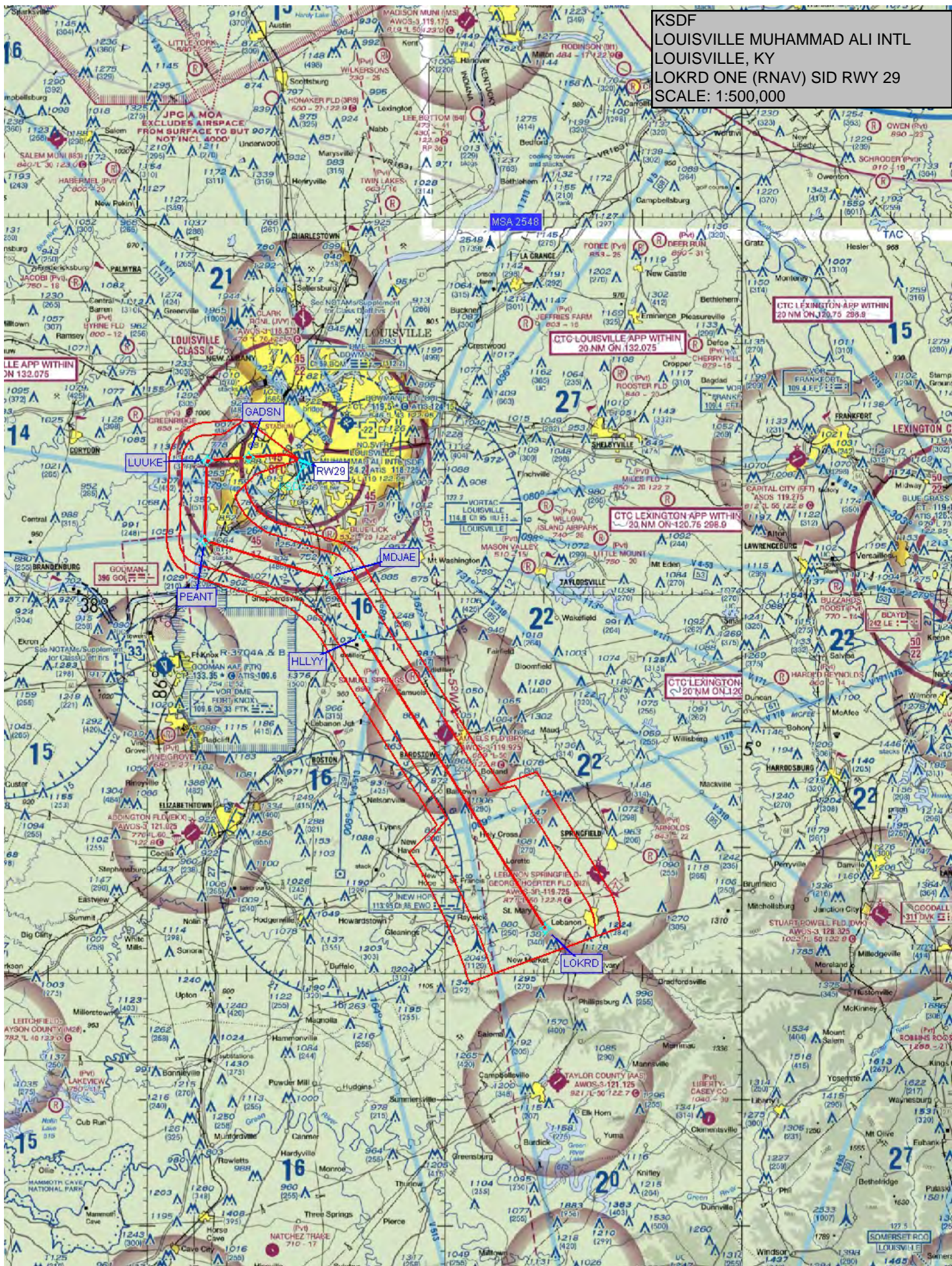
KSDF
LOUISVILLE MUHAMMAD ALI INTL
LOUISVILLE, KY
LOKRD ONE (RNAV) SID RWY 17R
SCALE: 1:500,000



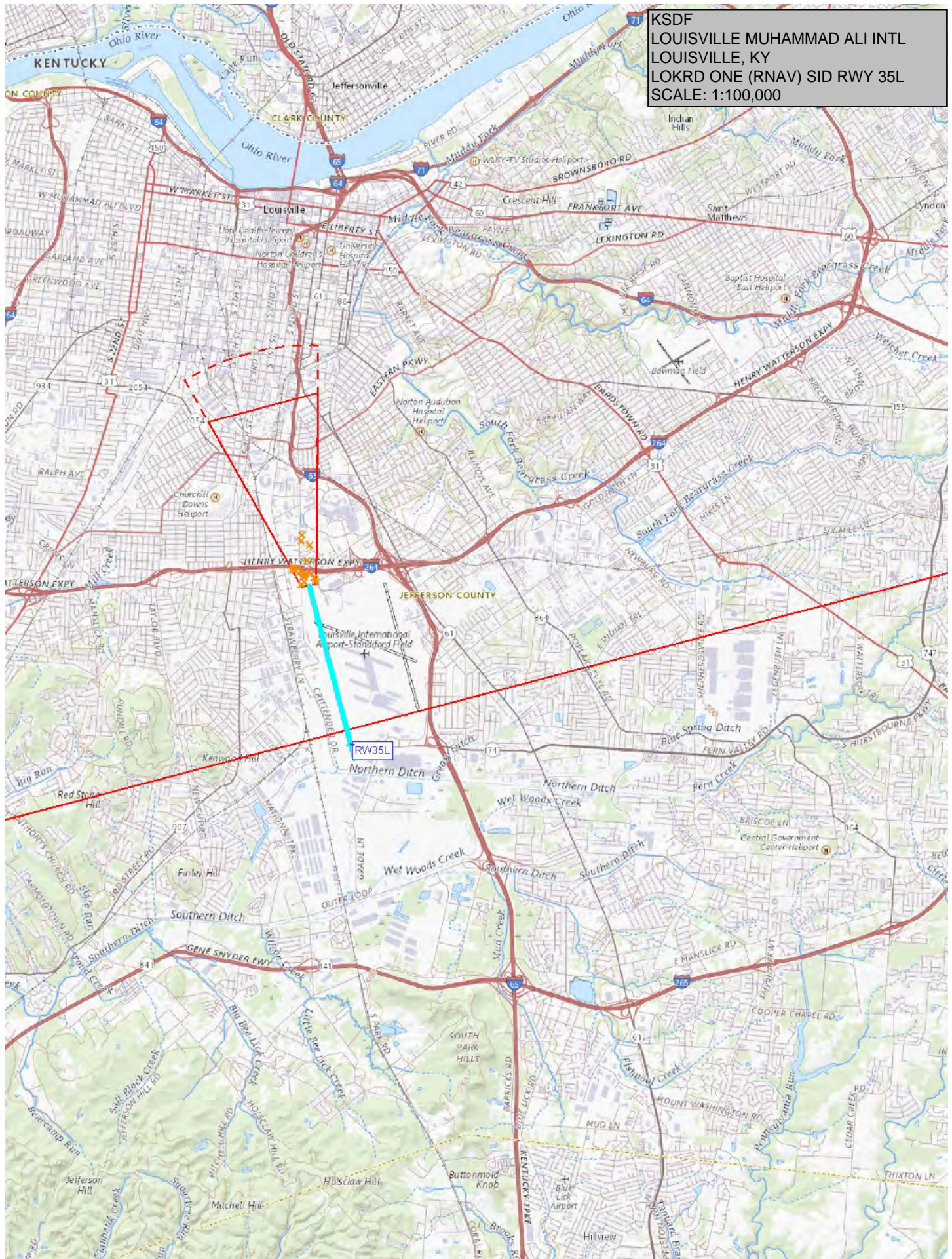
KSDF
LOUISVILLE MUHAMMAD ALI INTL
LOUISVILLE, KY
LOKRD ONE (RNAV) SID RWY 29
SCALE: 1:100,000



KSDF
LOUISVILLE MUHAMMAD ALI INTL
LOUISVILLE, KY
LOKRD ONE (RNAV) SID RWY 29
SCALE: 1:500,000

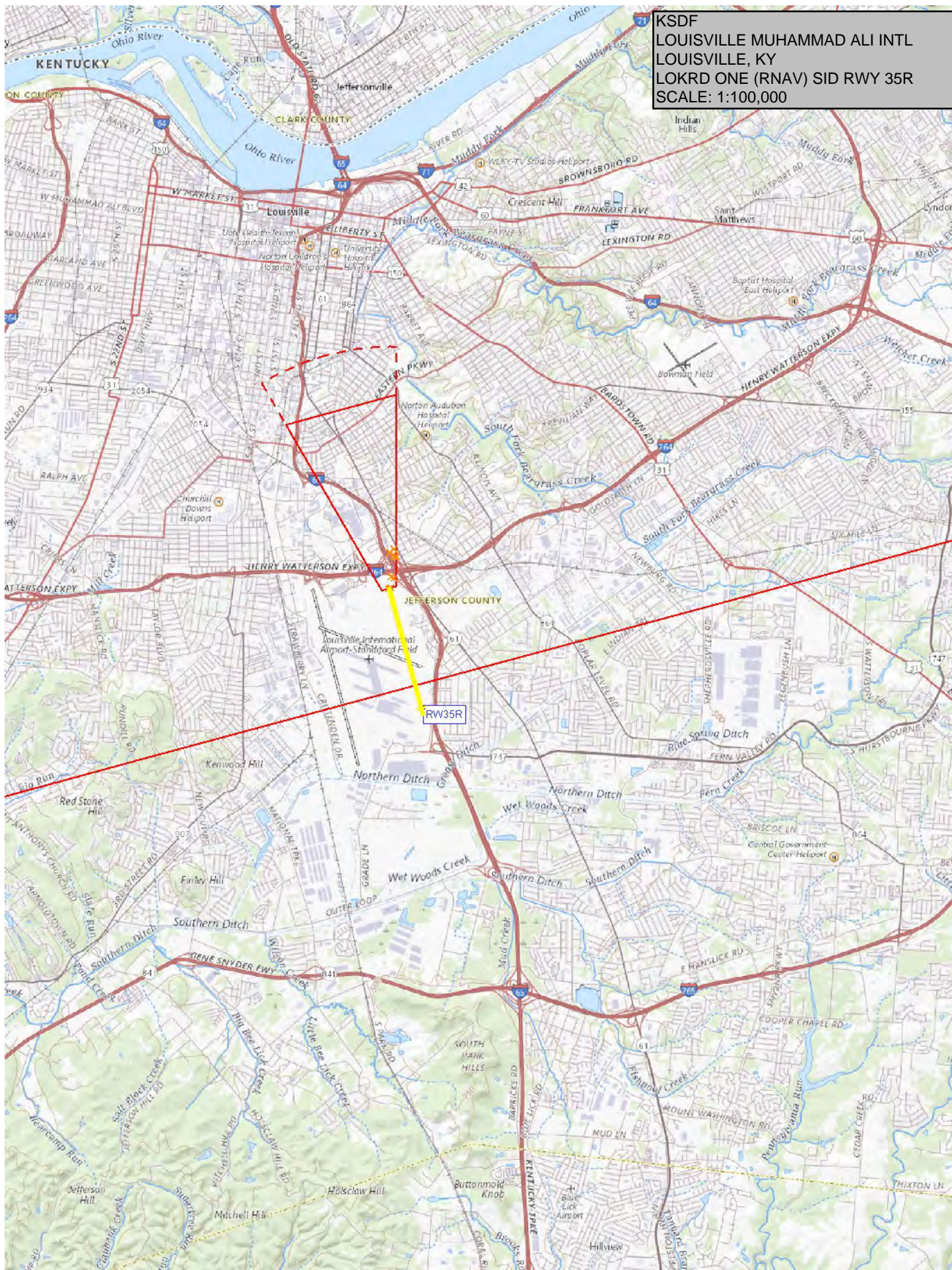


KSDF
LOUISVILLE MUHAMMAD ALI INTL
LOUISVILLE, KY
LOKRD ONE (RNAV) SID RWY 35L
SCALE: 1:100,000

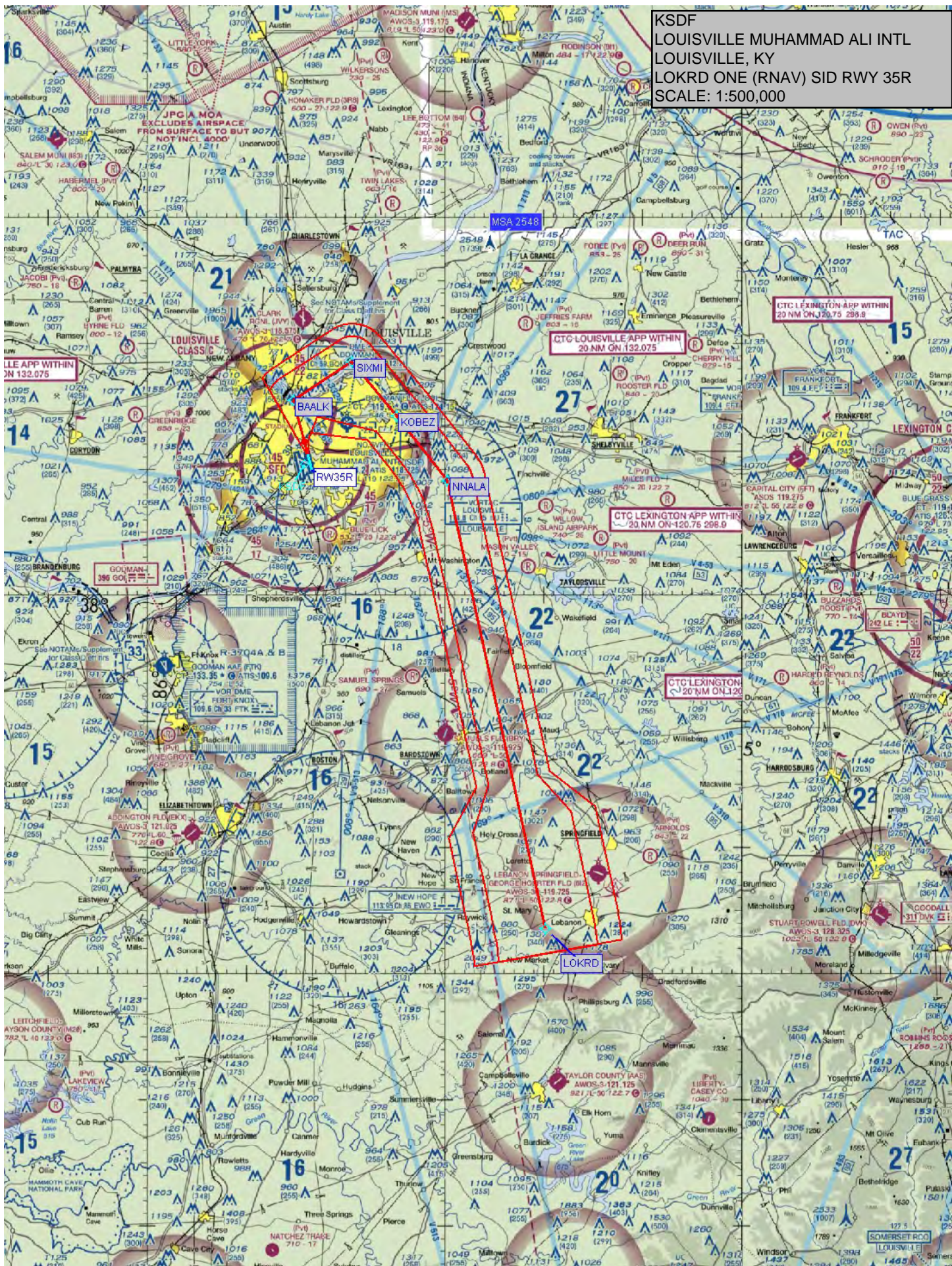


KSDF
LOUISVILLE MUHAMMAD ALI INTL
LOUISVILLE, KY
LOKRD ONE (RNAV) SID RWY 35L
SCALE: 1:500,000

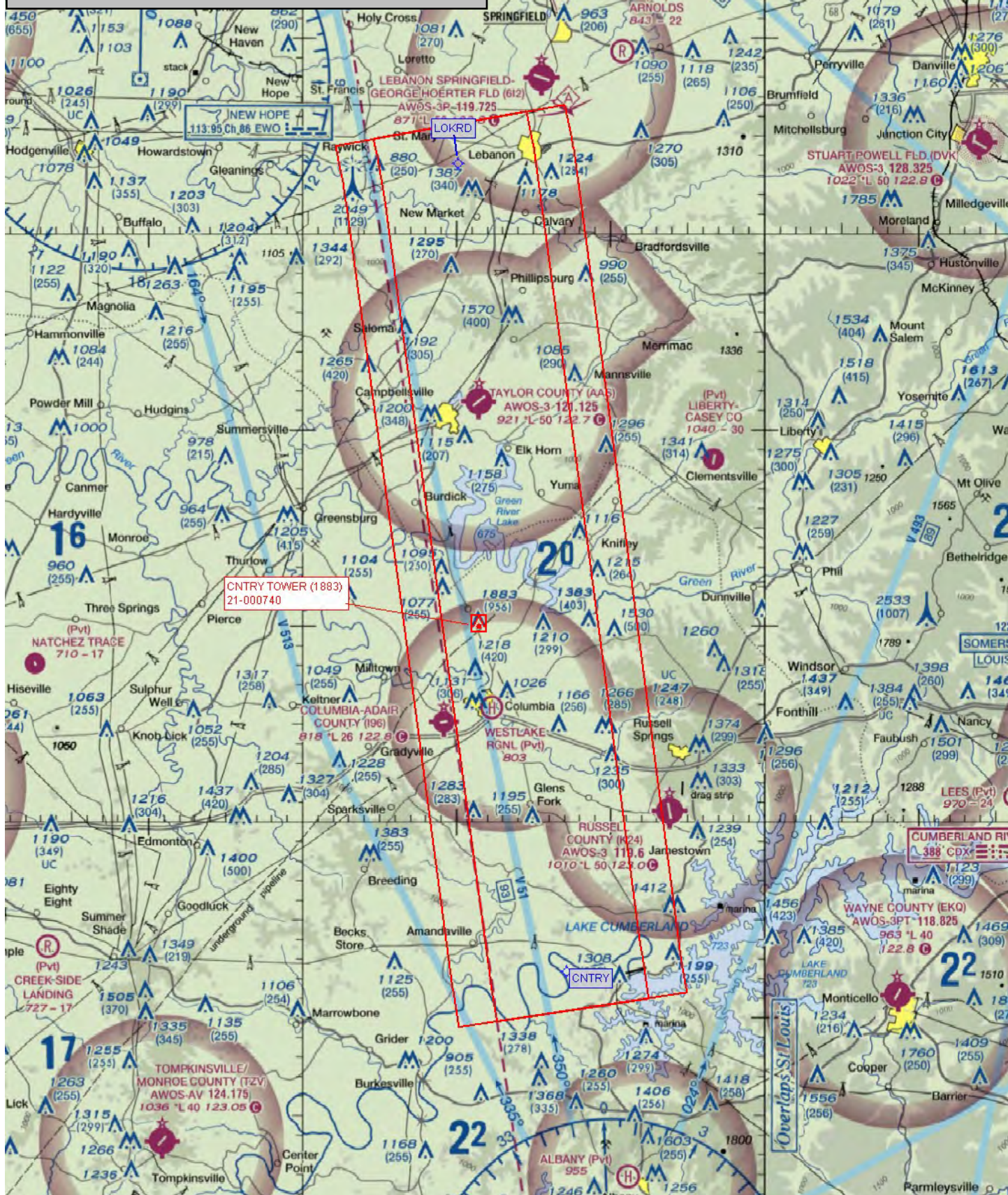
KSDF
LOUISVILLE MUHAMMAD ALI INTL
LOUISVILLE, KY
LOKRD ONE (RNAV) SID RWY 35R
SCALE: 1:100,000



KSDF
LOUISVILLE MUHAMMAD ALI INTL
LOUISVILLE, KY
LOKRD ONE (RNAV) SID RWY 35R
SCALE: 1:500,000



KSDF
LOUISVILLE MUHAMMAD ALI INTL
LOUISVILLE, KY
LOKRD ONE (RNAV) SID
BILET EN ROUTE TRANSITION (LOKRD TO CNTRY)
1 OF 2
SCALE: 1:500,000



KSDF
LOUISVILLE MUHAMMAD ALI INTL
LOUISVILLE, KY
LOKRD ONE (RNAV) SID
BILET ENROUTE TRANSITION (CNTRY TO BILET)
2 OF 2
SCALE: 1:500,000

