

Flight Procedures Cover Page	Task Action: FLIGHT CHECK	Task Type: IAP	Estimated Chart Date: 06/15/2023	APWS Task ID: 62B09D4762C140469B5988C7DFAC4D8E	APWS Project ID: 2513A3D246D24996A545F2D321F84BD8
Procedure: VOR RWY 4L AMDT 6B		Enroute: NO	Specialist: Mitchell, Tyler		Agreement Number:
Airport ID: KSFF			Airport City: SPOKANE		State: WA
Facility ID: GEG	Facility Type: VORTAC	Flight Inspection Remark Type: New FC Slot			
<div>Procedure Comments: GEG VORTAC MAGVAR UPDATED CONTACT CASIMIR TABAKA: 405-954-7931.</div> <div><div>QUALITY 41 CHECKED</div><div>QUALITY 35 CHECKED</div></div>					

SPOKANE, WASHINGTON

AL-402 (FAA)

FIG

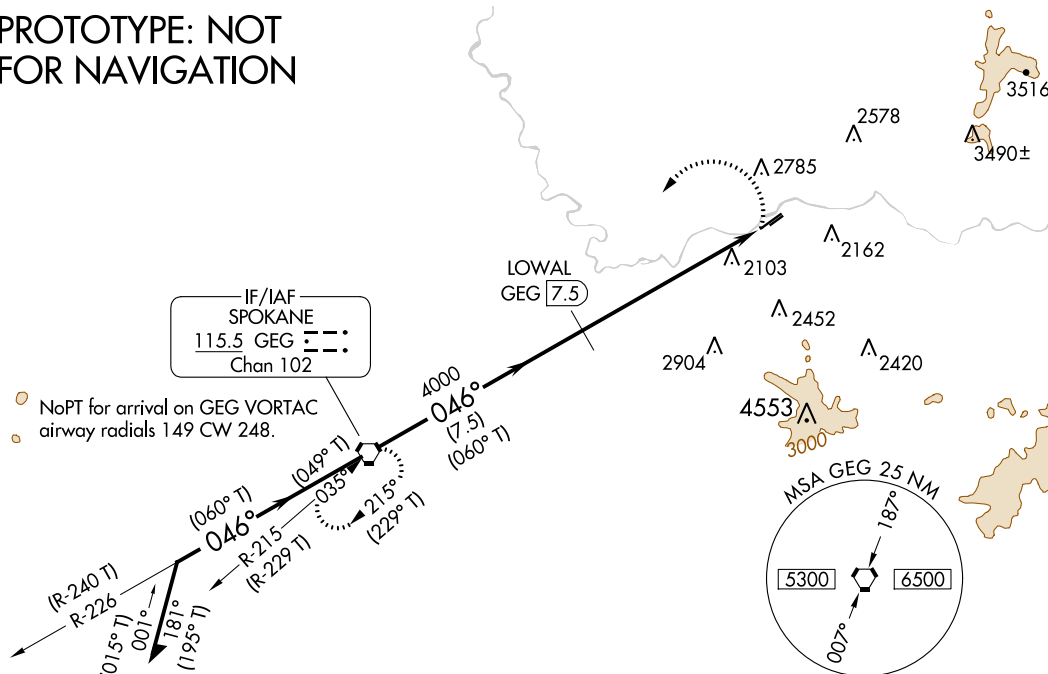
VORTAC GEG 115.5 Chan 102	APP CRS 046°	Rwy Idg TDZE Apt Elev 4499 1949 1957
---	------------------------	--

VOR RWY 4L

FELTS FLD (SFF)

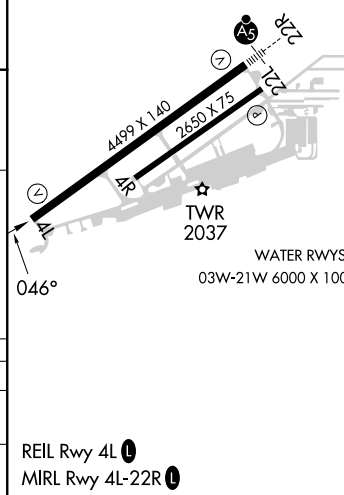
DME required.			MISSED APPROACH: Climbing left turn to 4500 direct GEG VORTAC and hold.		
<div> <div> <div></div> <div></div> <div></div> </div> <div> <div></div> <div></div> <div></div> </div> </div> <div> <div></div> <div></div> <div></div> </div> <div> <div></div> <div></div> <div></div> </div>					
ATIS 120.55	SPOKANE APP CON 133.35 263.0	FELTS TOWER ★ 132.5 (CTAF) 239.025	GND CON 121.7	CLNC DEL 121.7	UNICOM 122.95

PROTOTYPE: NOT
FOR NAVIGATION



ELEV 1957 **D** TDZE 1949

Remain within 10 NM		GEG VORTAC		4500		LOWAL GEG 7.5		GEG 10.8		GEG 13.8					
(240° T)		(226° T)		(060° T)		(060° T)		3.00° TCH 50							
4500		4500		4000											
7.5 NM		3.3 NM		3 NM											
CATEGORY	A	B	C	D											
S-4L	2960-1¼ 1011 (1100-¼)	2960-1½ 1011 (1100-½)	2960-3 1011 (1100-3)												
C CIRCLING	2960-1¼ 1003 (1100-¼)	2960-1½ 1003 (1100-½)	3100-3 1143 (1200-3)	3360-3 1403 (1500-3)											



REIL Rwy 4L **0**
MIRL Rwy 4L-22R **0**

SPOKANE, WASHINGTON

Amdt 6B FIG

47°41'N-117°19'W

FELTS FLD (SFF)
VOR RWY 4L

AUTOMATED AL-402 VOR/DME RWY 4L
AUTOMATED AL-402 VOR/DME RWY 4L

NW-1
24 FEB 2023
COMPILER: CG
REVIEWER:
DBL CHKR:
EFF: FIG

SPOKANE, WASHINGTON

AL-402 (FAA)

22307

VORTAC GEG	APP CRS	Rwy Idg	4499
<u>115.5</u>	<u>039°</u>	TDZE	1949
Chan 102		Apt Elev	1957

VOR RWY 4L
FELTS FLD (SFF)

DME required.

⚠

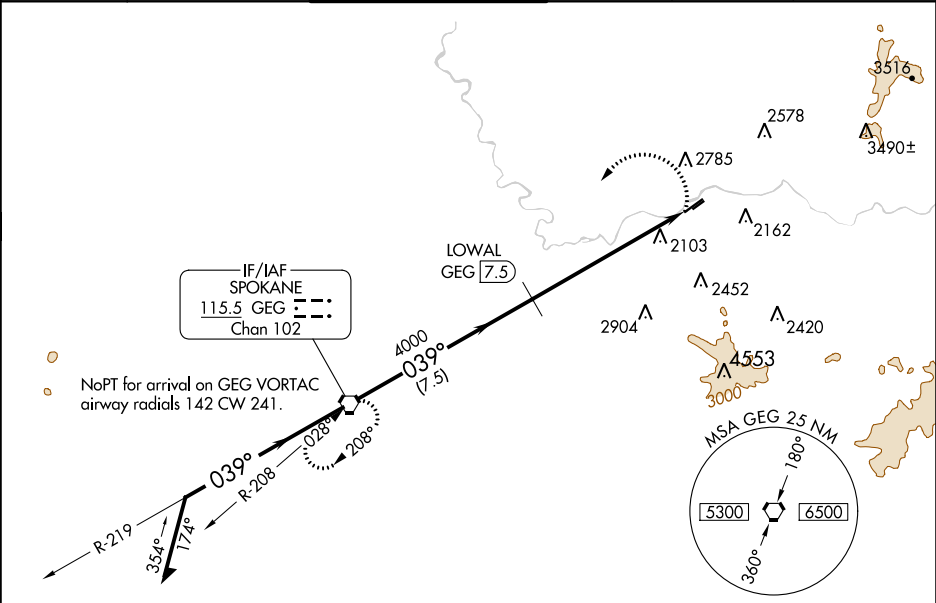
⚠

❄ -16°C

Circling NA northwest of Rwy 4L-22R. VDP NA when using Spokane Intl altimeter setting. Rwy 4L helicopter visibility reduction below 3/4 SM NA. When local altimeter setting not received, use Spokane Intl altimeter setting and increase all MDAs 80 feet. Circling Rwy 22L NA at night.

MISSED APPROACH: Climbing left turn to 4500 direct GEG VORTAC and hold.

ATIS 120.55	SPOKANE APP CON 133.35 263.0	FELTS TOWER ★ 132.5 (CTAF) 239.025	GND CON 121.7	CLNC DEL 121.7	UNICOM 122.95
----------------	---------------------------------	---------------------------------------	------------------	-------------------	------------------



ELEV 1957

TDZE 1949

Remain within 10 NM

4500

219°

039°

4500

039°

4000

3.00' TCH 50

LOWAL GEG 7.5

GEG 10.8

GEG 13.8

4500

GEG

4499 X 140

2650 X 75

TWR 2037

WATER RWYS: 03W-21W 6000 X 100

REIL Rwy 4L

MRL Rwy 4L-22R

CATEGORY	A	B	C	D
S-4L	2960-1¼ 1011 (1100-1¼)	2960-1½ 1011 (1100-1½)	2960-3 1011 (1100-3)	
CIRCLING	2960-1¼ 1003 (1100-1¼)	2960-1½ 1003 (1100-1½)	3100-3 1143 (1200-3)	3360-3 1403 (1500-3)

SPOKANE, WASHINGTON
Amdt 6A 03NOV22

47°41'N-117°19'W

FELTS FLD (SFF)
VOR RWY 4L

NW-1, 29 DEC 2022 to 26 JAN 2023

NW-1, 29 DEC 2022 to 26 JAN 2023

