

Flight Procedures Cover Page	Task Action: P-NOTAM	Task Type: IAP	Estimated Chart Date: 10/08/2020	APWS Task ID: 6193378D6717479C89FAD0572F287FD6	APWS Request ID: 1CBB517C5BAD42E29064C824B9A4F640
Procedure: RNAV (GPS) RWY 8 AMDT 0A		Enroute: NO	Specialist: Barnes, Kellie		Agreement Number:
Airport ID: KUNU	Airport Name: DODGE COUNTY		Airport City: JUNEAU		State: WI
Facility ID:	Facility Type:	Flight Inspection Remark Type:			
<p>Procedure Comments: P-NOTAM</p> <p>ACTIVE DATA USED</p> <p>CIRCLING ICON - NO CHANGES TO MDA/HAA WITH APPLICATION OF EXPANDED CIRCLING CRITERIA</p> <p>PROCESSED IAW AIRCRAFT OPERATIONS GROUP (AJW-33) MEMO, OCTOBER 3, 2018, SUBJECT: FLIGHT INSPECTION REVIEW NOT REQUIRED.</p> <p>CONTACT DAVID DANNER 405-954-5077</p>					

QUALITY
16
CHECKED

QUALITY
41
CHECKED

APP CRS	Rwy Idg	5070
081°	TDZE	913
	Apt Elev	934

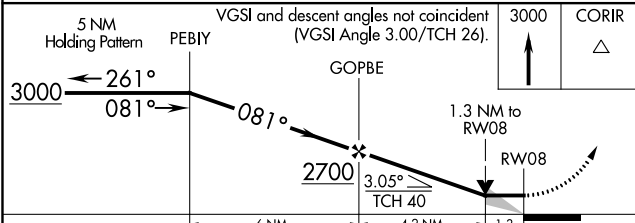
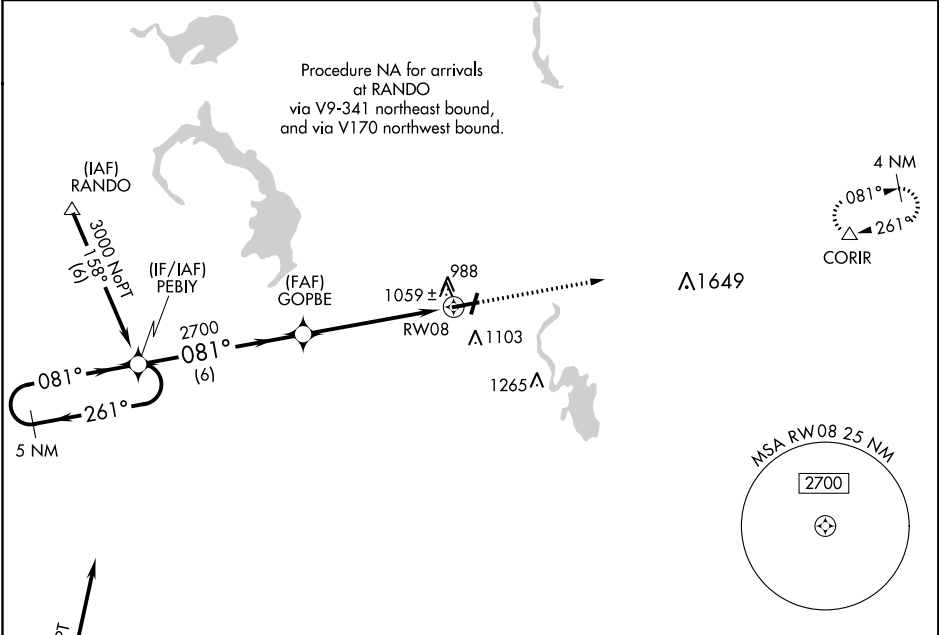
OLD

RNAV (GPS) RWY 8
DODGE COUNTY(UNU)

⚠ DME/DME RNP-0.3 NA. If local altimeter setting not received, use Dane County Rgnl-Truax Field altimeter setting and increase all MDAs 100 feet. VDP NA when using Dane County Rgnl-Truax Field altimeter setting.

MISSED APPROACH: Climb to 3000 direct CORIR and hold.

AWOS-3 120.825	MADISON APP CON 119.15 343.7	GCO 121.725	UNICOM 122.7 (CTAF) 0
-------------------	---------------------------------	----------------	---------------------------------



CATEGORY	A	B	C	D
RNAV MDA	1320-1	407 (400-1)	1320-1¼ 407 (400-1¼)	NA
CIRCLING	1440-1	506 (600-1)	1440-1½ 506 (600-1½)	NA

ELEV 934 TDZE 913

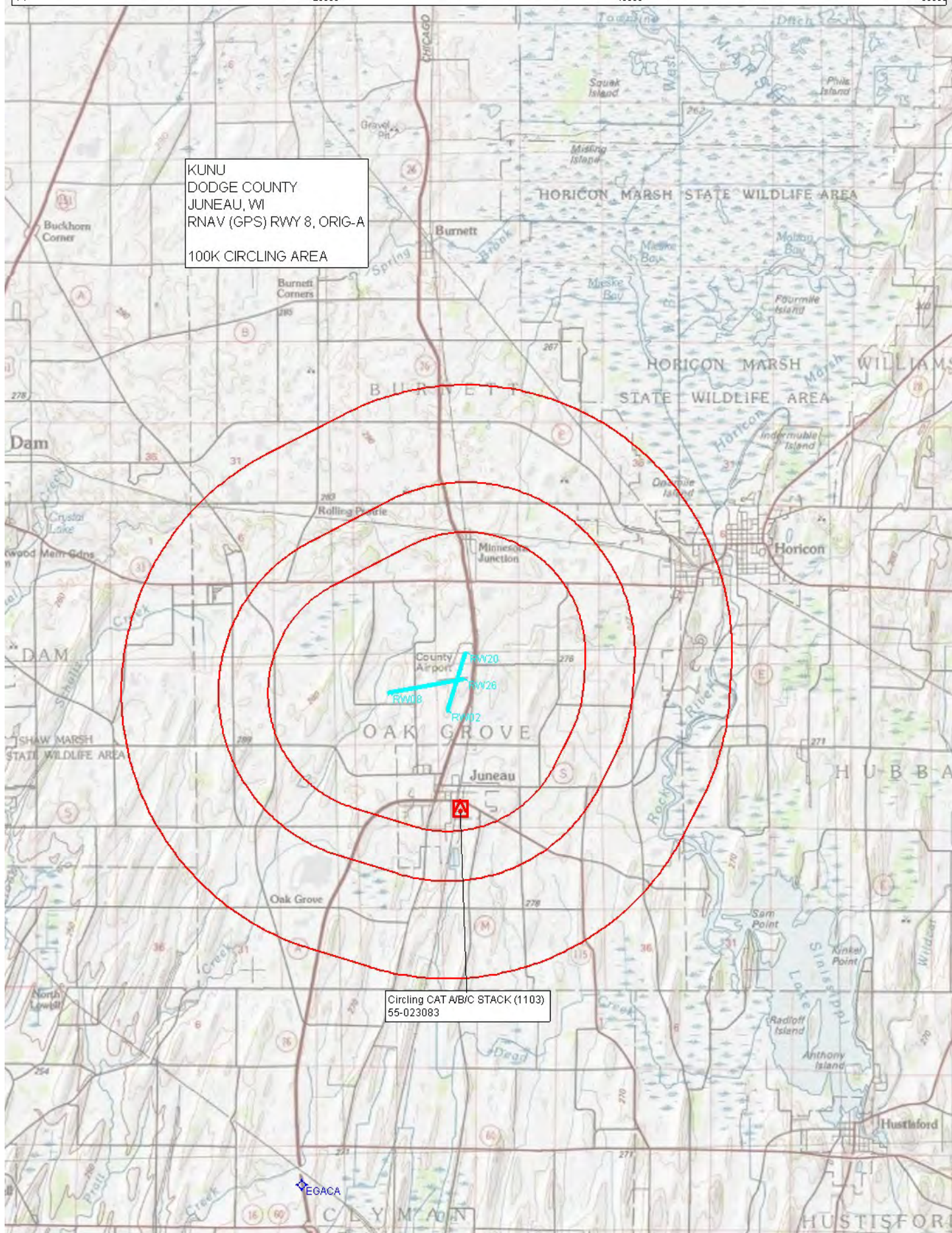
REIL Rwy 2, 8, and 20 **0**
MIRL Rwy 8-26 and 2-20 **0**

EC-3, 26 MAR 2020 to 23 APR 2020

EC-3, 26 MAR 2020 to 23 APR 2020

NM 2 4 6 8
FT 20000 40000 60000

KUNU
DODGE COUNTY
JUNEAU, WI
RNAV (GPS) RWY 8, ORIG-A
100K CIRCLING AREA



Circling CAT A/B/C STACK (1103)
55-023083