

APP CRS <b>055°</b>	Rwy Ldg TDZE Apt Elev	<b>6000</b> <b>671</b> <b>681</b>
------------------------	-----------------------------	---

**RNAV (GPS) RWY 6**  
MAURY COUNTY RGNL (MRC)

RNP APCH - GPS.

**T** Rwy 6 helicopter visibility reduction below  $\frac{3}{4}$  SM NA. Circling NA to Rwy 17 and 35.  
**A** When local altimeter setting not received, use BNA altimeter setting and increase all MDAs 120 feet and LNAV visibility Cat A  $\frac{1}{4}$  SM, and Circling visibility Cat A/C  $\frac{1}{4}$  SM.

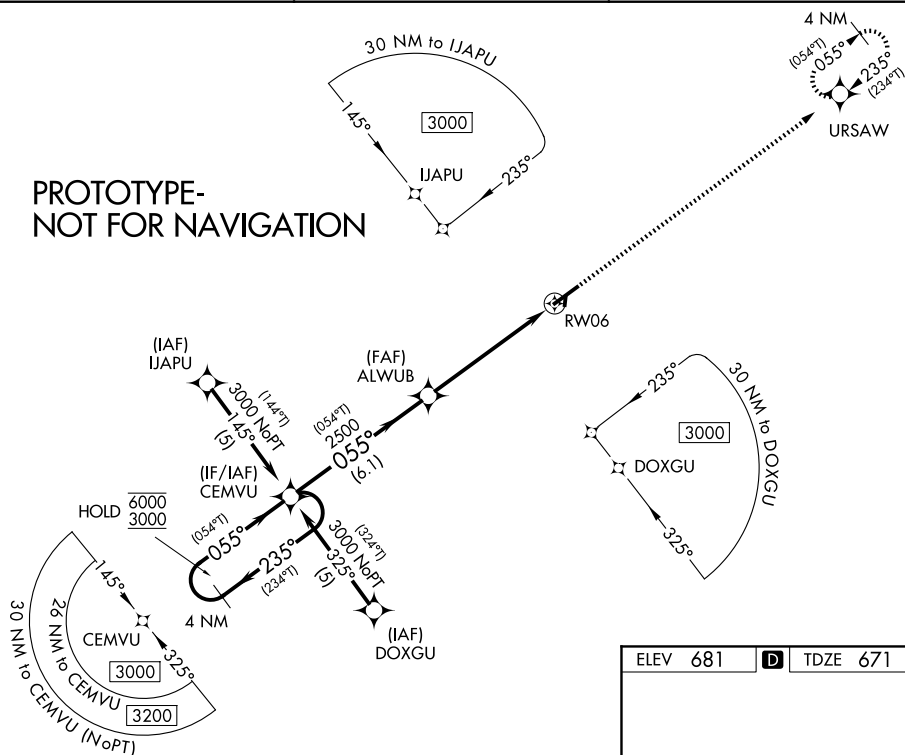
**MISSED APPROACH:**  
Climb to 3000 direct  
URSAW and hold.

AWOS-3  
128.625

MEMPHIS CENTER  
125.85 379.25

UNICOM  
122.8 (CTAF) **L**

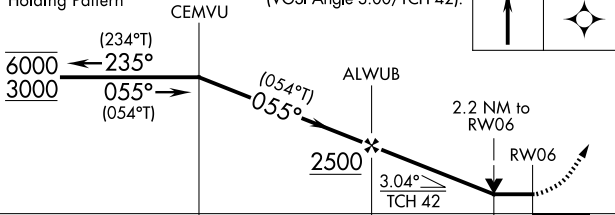
PROTOTYPE-  
NOT FOR NAVIGATION



ELEV 681	<b>D</b>	TDZE 671
----------	----------	----------

4 NM Holding Pattern	VGSI and descent angles not coincident (VGSI Angle 3.00/TCH 42).
----------------------	--

3000	URSAW
------	-------



CATEGORY	A	B	C	D
LNAV MDA	1460-1 789 (800-1)	1460-1¼ 789 (800-1¼)	1460-2½	789 (800-2½)
CIRCLING	1460-1 779 (800-1)	1460-1¼ 779 (800-1¼)	1460-2½ 779 (800-2½)	1620-3 939 (1000-3)

MIRL Rwy 6-24  
REIL Rwy 6  
REIL Rwy 24 **L**