

Flight Procedures Cover Page	Task Action: FLIGHT CHECK	Task Type: IAP	Estimated Chart Date: 09/05/2024	APWS Task ID: 605272B8F39242F2960B639388681AF5	APWS Project ID: C1C3F1CD4B344985AF1DAB280FABB2F5
Procedure: ILS OR LOC RWY 28 AMDT 18		Enroute: NO	Specialist: Krueger, Zachary		Agreement Number:
Airport ID: KBWI			Airport City: BALTIMORE		State: MD
Facility ID: OEH	Facility Type: ILS	Flight Inspection Remark Type: New FC Slot			
<div>Procedure Comments: PROCEDURE REDESIGN FOR NOISE ABATEMENT.  CONTACT ERIC SUSKI: (405) 954-7331.  HARD DATE</div> <div>QUALITY 33 CHECKED</div> <div>QUALITY 26 CHECKED</div>					

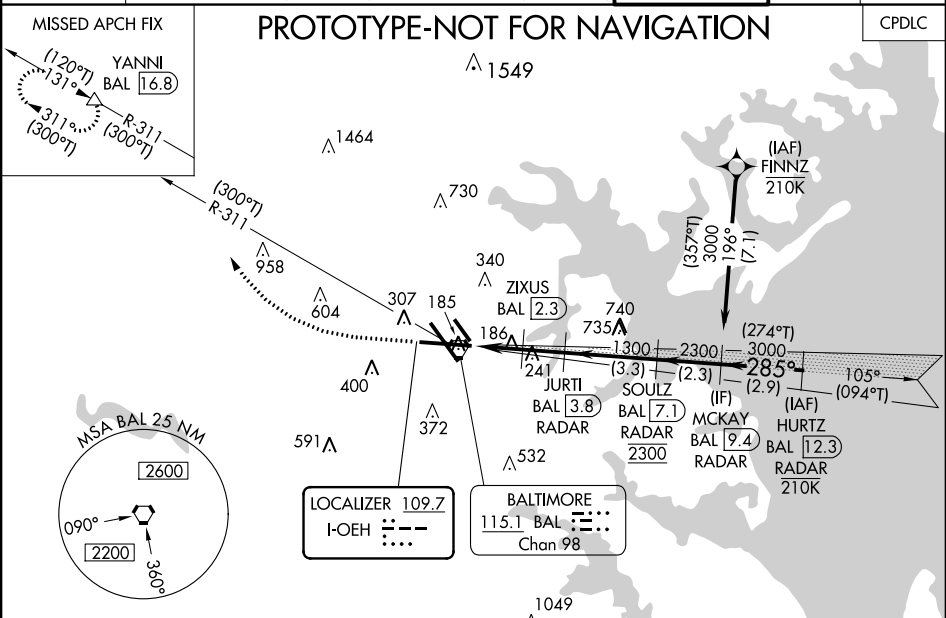
LOC I-OEH	APP CRS	Rwy Idg	9803
109.7	285°	TDZE	143
		Apt Elev	143

BALTIMORE/  
WASHINGTON INTL THURGOOD MARSHALL (BWI)

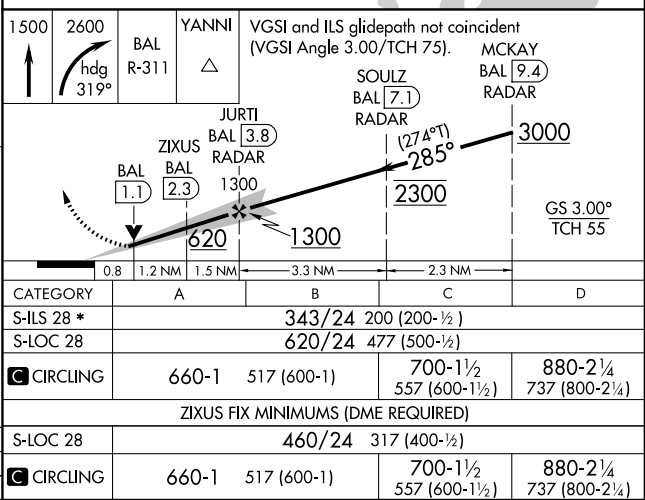
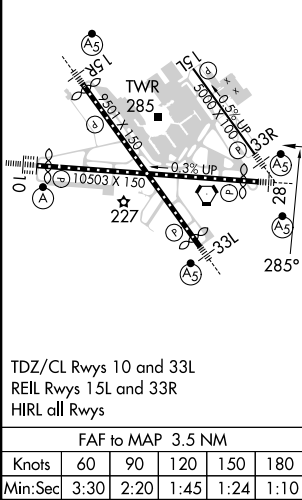
ILS or LOC RWY 28

DME or RADAR required.	MALSR	MISSED APPROACH: Climb to 1500 then climbing right turn to 2600 on heading 319° and BAL VORTAC R-311 to YANNI INT/ BAL 16.8 DME and hold.
For inop ALS, increase S-LOC 28 Cat C/D visibility to 1½ SM and increase ZIXUS fix S-LOC 28 Cat C/D visibility to RVR 4500. * RVR 1800 authorized with use of FD or AP or HUD to DA.		

D-ATIS	POTOMAC APP CON	BALTIMORE TOWER	GND CON	CLNC DEL
115.1 127.8	119.0 282.275 (020°-100°) 119.7 290.475 (131°-180°) 124.55 317.425 (101°-130°) 128.7 307.9 (181°-019°)	119.4 257.8	121.9	118.05



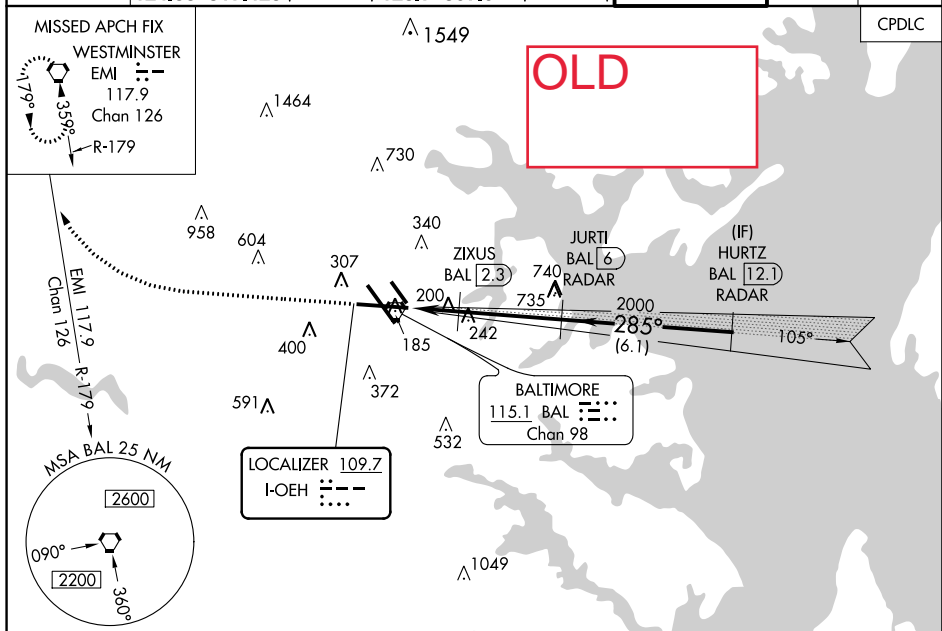
ELEV 143	TDZE 143
----------	----------



LOC I-OEH <b><u>109.7</u></b>	APP CRS <b>285°</b>	Rwy Idg TDZE Apt Elev	<b>9803</b> <b>143</b> <b>143</b>
----------------------------------	------------------------	-----------------------------	---

BALTIMORE/ WASHINGTON INTL THURGOOD MARSHALL (BWI) ILS or LOC RWY 28

DME or RADAR required.					MALSR		MISSED APPROACH: Climb to 1500 then climbing right turn to 2600 on heading 305° and EMI VORTAC R-179 to EMI VORTAC and hold.		
<div>▼</div> For inop ALS, increase S-LOC 28 Cat C/D visibility to 1½ SM, and increase ZIXUS fix S-LOC 28 Cat C/D visibility to RVR 4500.					<div>AS</div> <div></div>				
<div>▲</div> **RVR 1800 authorized with use of FD or AP or HUD to DA.									
D-ATIS		POTOMAC APP CON				BALTIMORE TOWER		GND CON	CLNC DEL
115.1	127.8	119.0	282.275	(020°-100°)	119.7	290.475	(131°-180°)		
		124.55	317.425	(101°-130°)	128.7	307.9	(181°-019°)	121.9	118.05

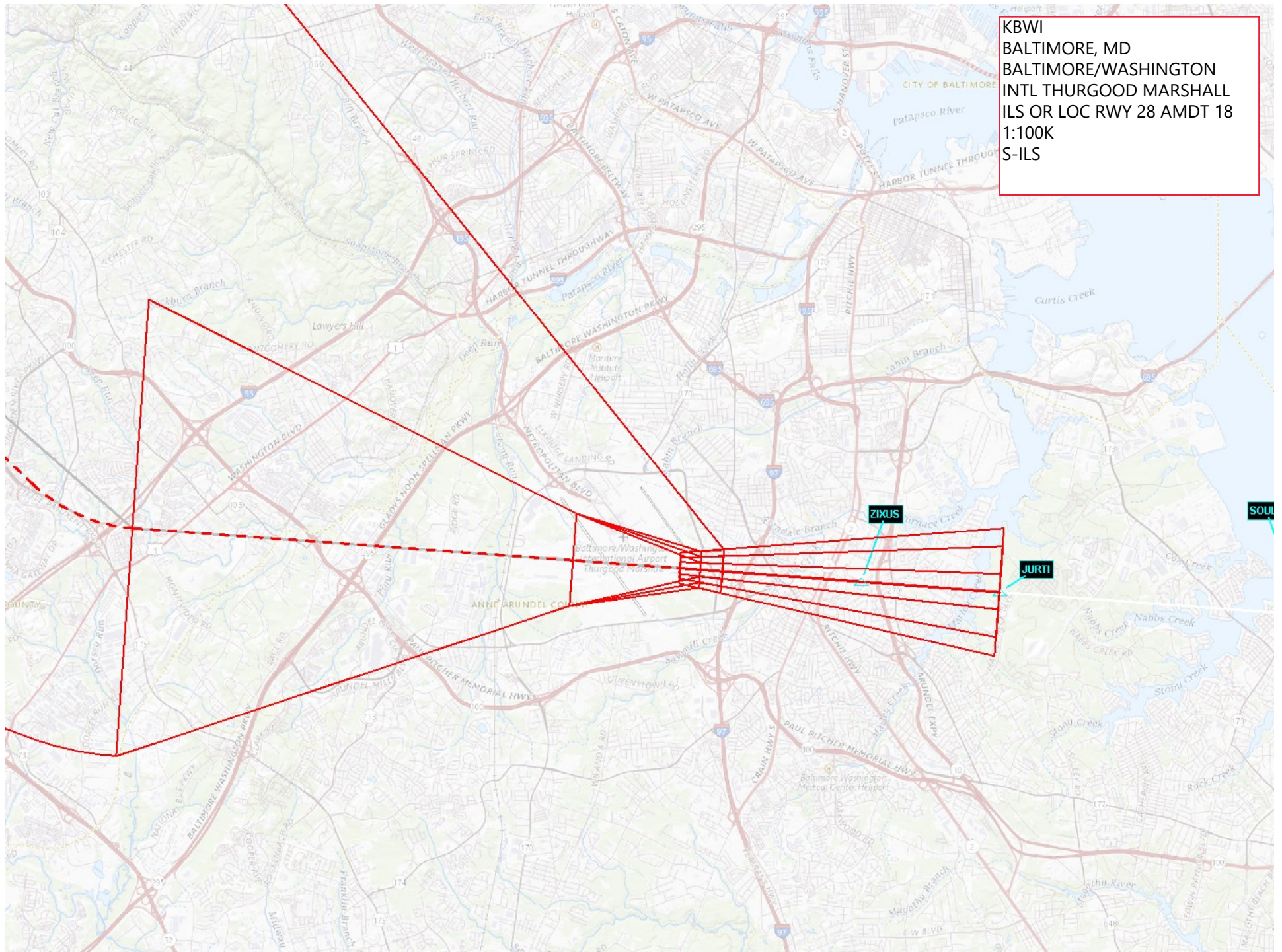








KBWI  
BALTIMORE, MD  
BALTIMORE/WASHINGTON  
INTL THURGOOD MARSHALL  
ILS OR LOC RWY 28 AMDT 18  
1:100K  
S-ILS

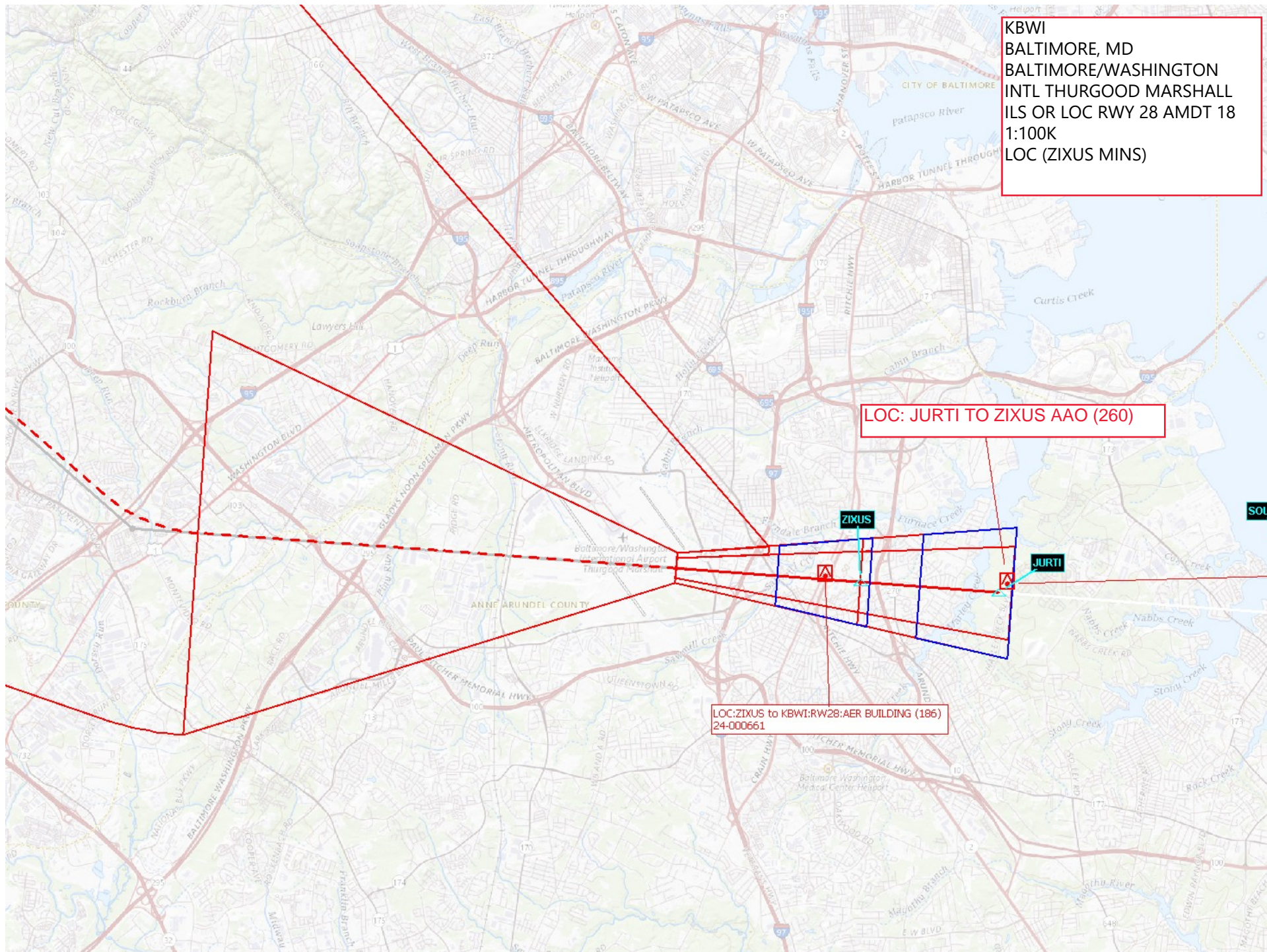




KBWI  
BALTIMORE, MD  
BALTIMORE/WASHINGTON  
INTL THURGOOD MARSHALL  
ILS OR LOC RWY 28 AMDT 18  
1:100K  
LOC (ZIXUS MINS)

LOC: JURTI TO ZIXUS AAO (260)

LOC: ZIXUS to KBWI: RWY 28: AER BUILDING (186)  
24-000661





KBWI  
BALTIMORE, MD  
BALTIMORE/WASHINGTON  
INTL THURGOOD MARSHALL  
ILS OR LOC RWY 28 AMDT 18  
1:100K  
CIRC

**Circling CAT D AAO (565)**

**Circling CAT A/B TREE (347)**

Circling CAT C BUILDING (400)  
24-040487

**ZIXUS**

**JURTI**