

Flight Procedures Cover Page	Task Action: FLIGHT CHECK	Task Type: IAP	Estimated Chart Date: 04/22/2021	APWS Task ID: 5F707F96AB1542D9BDF599820AA64E9D	APWS Project ID: 059D3BF1D2DC48729CC19D7B70A1AF35
Procedure: RNAV (GPS) RWY 12 AMDT 1A		Enroute: NO	Specialist: Christensen, Richard		Agreement Number:
Airport ID: PFKT	Airport Name: BREVIG MISSION		Airport City: BREVIG MISSION		State: AK
Facility ID:	Facility Type:	Flight Inspection Remark Type: New FC Slot			
<p><b>Procedure Comments:</b> ACTIVE DATA USED FOR AIRPORT AND RUNWAY.</p> <p>J ZEDER 11/04/2020</p> <p>CRC REMAINDER CHANGED FROM 99A95C37 TO 9E06D4E1.</p> <p>CANCEL FDC 9/0778 UPON PUBLICATION.</p> <p>CONTACT WARDELL HENNING: 405-954-9954.</p>					

QUALITY  
16  
CHECKED

QUALITY  
41  
CHECKED

[illegible]

OLD

BREVIG MISSION, ALASKA

AL-10274 (FAA)

2014Z

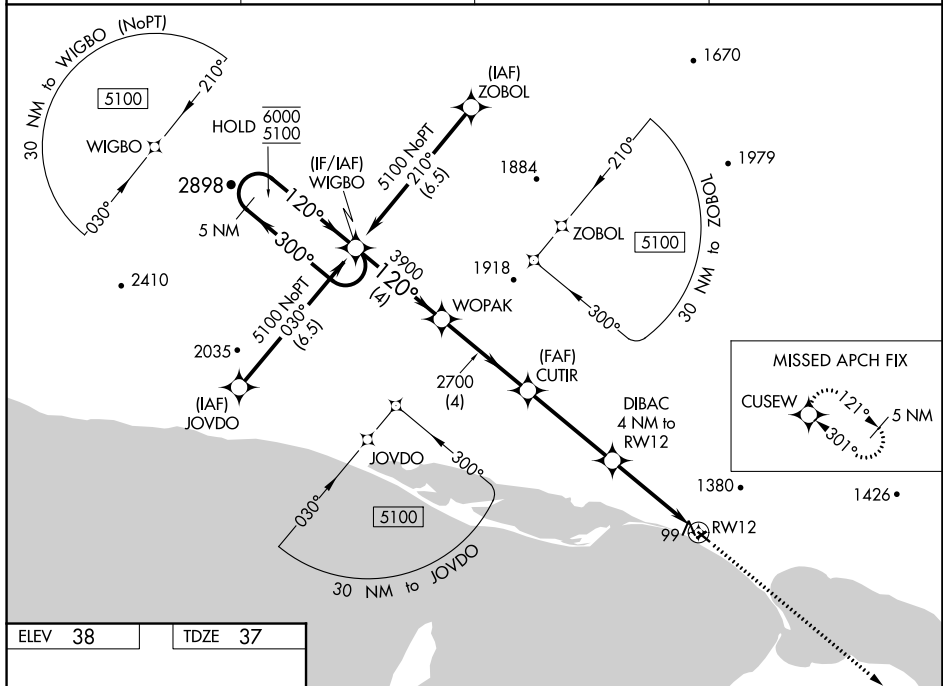
WAAS CH <b>77628</b> <b>W12A</b>	APP CRS <b>120°</b>	Rwy Idg TDZE <b>37</b> Apt Elev <b>38</b>	<b>2990</b>
--	------------------------	---	-------------

# RNAV (GPS) RWY 12

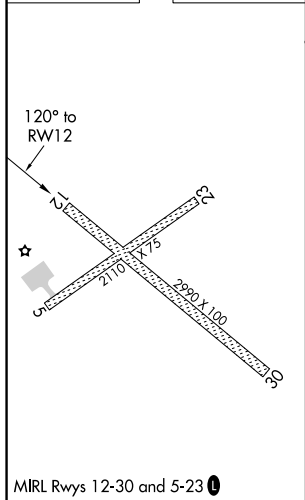
BREVIG MISSION (KTS)(PFT)

RNP APCH. ▼ Circling NA north of Rws 12 and 23. Circling Rwy 23 NA at night. -26°C For uncompensated Baro-VNAV systems, LNAV/VNAV NA below -25°C or above 54°C.	MISSED APPROACH: Climb to 6300 direct CUSEW and hold, continue climb-in-hold to 6300.
---	---

AWOS-3P <b>121.55</b>	ANCHORAGE CENTER <b>133.3 290.4</b>	NOME RADIO <b>135.6</b>	CTAF <b>123.0</b>
--------------------------	--	----------------------------	----------------------



ELEV 38	TDZE 37
---------	---------



5 NM Holding Pattern		WOPAK	CUTIR	DIBAC 4 NM to RW12	6300 CUSEW
6000	5100	300°	120°	2700	*LNAV only.
GP 3.00°	TCH 40	4 NM	4 NM	3.9 NM	*0.9 NM to RW12
2700	*1360	3.1 NM	0.9		
CATEGORY	A	B	C	D	
LPV DA	287-1	250 (300-1)		NA	
LNAV/VNAV DA	287-1	250 (300-1)		NA	
LNAV MDA	360-1	323 (400-1)		NA	
CIRCLING	620-1 582 (600-1)	1460-1½ 1422 (1500-1½)		NA	

BREVIG MISSION, ALASKA

Amdt 1 03JAN19

65°20'N-166°28'W

# RNAV (GPS) RWY 12

AK, 21 MAY 2020 to 16 JUL 2020

BREVIG MISSION, ALASKA

AL-10274 (FAA)

FIG

WAAS CH <b>77628</b> <b>W12A</b>	APP CRS <b>120°</b>	Rwy Idg TDZE Apt Elev	<b>2990</b> <b>37</b> <b>38</b>
--	------------------------	-----------------------------	---------------------------------------

# **RNAV (GPS) RWY 12** BREVIG MISSION (KTS) (PFT)

RNP APCH.

Circling NA north of Rwy 12 and 23. Circling Rwy 23 NA at night.  
 For uncompensated Baro-VNAV systems, LNAV/VNAV NA below -25° C or above 54°C.

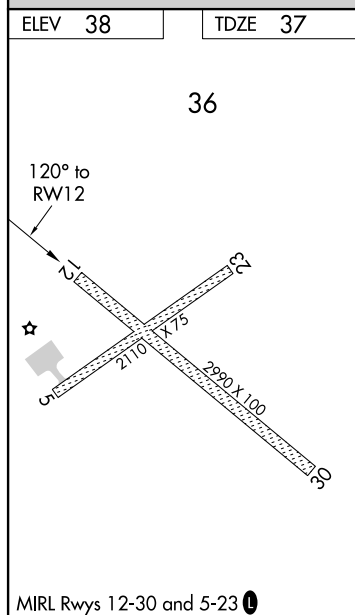
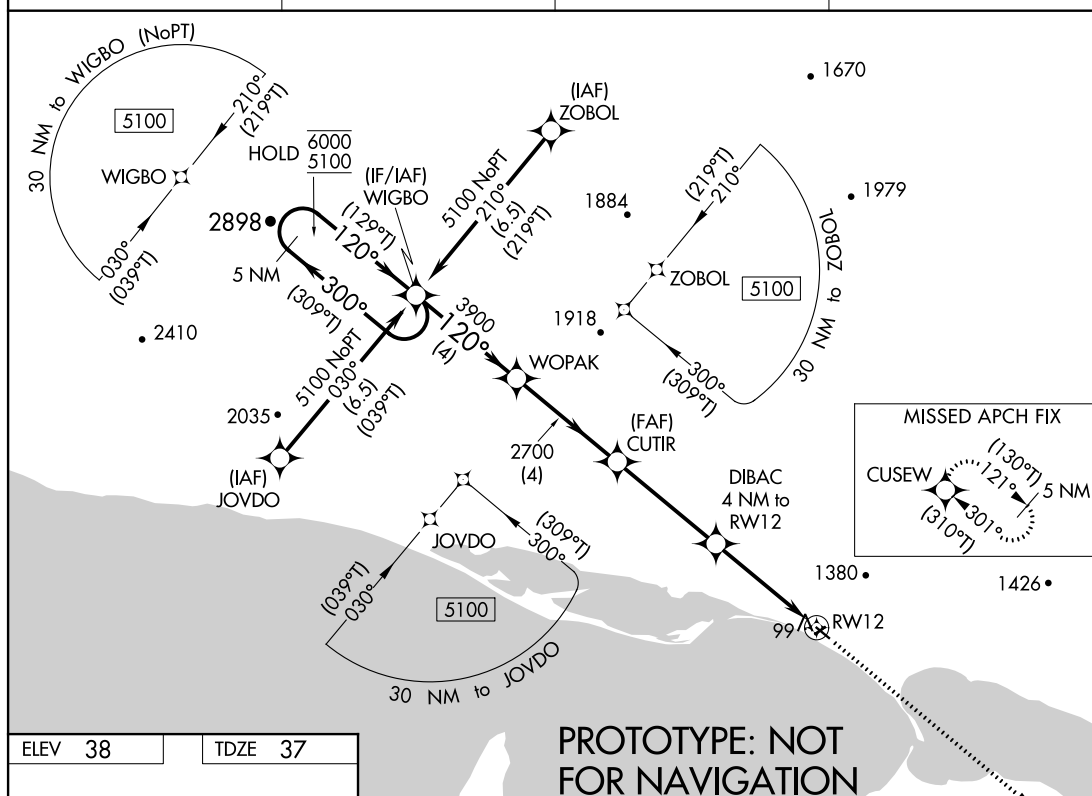
MISSED APPROACH: Climb to 6300  
 direct CUSEW and hold, continue  
 climb-in-hold to 6300.

AWOS-3P  
**121.55**

ANCHORAGE CENTER  
**133.3 290.4**

NOME RADIO  
**135.6**

CTAF  
**123.00**



MRL Rwy 12-30 and 5-23

BREVIG MISSION, ALASKA

Amdt 1A FIG

65°20'N-166°28'W

BREVIG MISSION (KTS) (PFT)  
**RNAV (GPS) RWY 12**

AUTOMATED AL-10274 RNAV (GPS) RWY 12

AK  
 6 OCT 2020  
 COMPILER: CG  
 REVIEWER:  
 DBL CHKR:  
 EFF DATE: FIG

5 NM Holding Pattern		WIGBO	WOPAK	CUTIR	DIBAC	CUSEW	
6000		(309°T)	(129°T)	2700	4 NM to RWY 12	*LNAV only.	
5100		120° (129°T)	120°	2700	*0.9 NM to RWY 12	RWY 12	
GP 3.12°							
TCH 40							
		4 NM	4 NM	3.9 NM	3.1 NM	0.9	
CATEGORY		A	B	C	D		
LPV DA	287-1	250 (300-1)		NA			
LNAV/VNAV DA	287-1	250 (300-1)		NA			
LNAV MDA	360-1	323 (400-1)		NA			
CIRCLING	620-1	1460-1½		NA			
	582 (600-1)	1422 (1500-1½)					

<b>FIPC BASIC FORM</b>									
<b>PROCEDURE:</b> RNAV (GPS) RWY 12 1				<b>AIRPORT NAME:</b> BREVIG MISSION		<b>AIRPORT ID:</b> PFKT		<b>SPECIAL CONTROL NO:</b> KG-10-128-18	
<b>FAC ID:</b> PFKT12.01		<b>CITY:</b> BREVIG MISSION				<b>ST:</b> AK		<b>ORIG CHART DATE:</b> 01/03/2019	
<b>DFL TYPE:</b> PROC/S	<b>THIRD PARTY:</b> <input type="checkbox"/> YES	<b>EST. TIME ON SITE:</b> 0.4	<b>REIMB. NUMBER:</b>		<b>PTS TASK ID:</b> 2017110209411001001				
<b>PREFLIGHT NOTES</b>									
<b>REVIEWER:</b>						<b>DATE:</b>			
<b>COMMENTS:</b>						<b>CHECK ONE:</b> <input type="checkbox"/> FLT CK REQ <input type="checkbox"/> NFCR <input type="checkbox"/> REJECT			
								YES	NO
						<b>CPV COMPLETE?</b>		X	
<b>PROCEDURE RESULTS</b>									
<b>INSPECTION DATE:</b> 10/23/2018		<b>CREW #:</b> VN376	<b>N #:</b> N89	<b>INSTRUMENT PROCEDURE STATUS:</b> <input checked="" type="checkbox"/> SAT <input type="checkbox"/> SAT W/CHANGES <input type="checkbox"/> UNSAT			<b>ARINC CODING:</b> <input type="checkbox"/> SAT <input checked="" type="checkbox"/> SAT/GOLD <input type="checkbox"/> UNSAT		
<b>FLIGHT INSPECTOR SIGNATURE:</b> thomas conklin @ 10/23/2018 19:41				<b>PRINTED NAME:</b> CONKLIN, THOMAS ROBERT				<b>NOTAM INITIATED?</b> <input type="checkbox"/> YES <input checked="" type="checkbox"/> NO	
<b>FLIGHT INSPECTOR REMARKS:</b>									
<b>IN-FLIGHT OBSTACLE REPORT</b>									
<b>OBSTRUCTION ID #:</b>	<b>COORDINATES OR LOCATION:</b>		<b>GNSS ALTITUDE (MSL):</b>		<b>BAROMETRIC ALTITUDE (MSL):</b>		<b>HEIGHT ABOVE GROUND LEVEL:</b>		

