

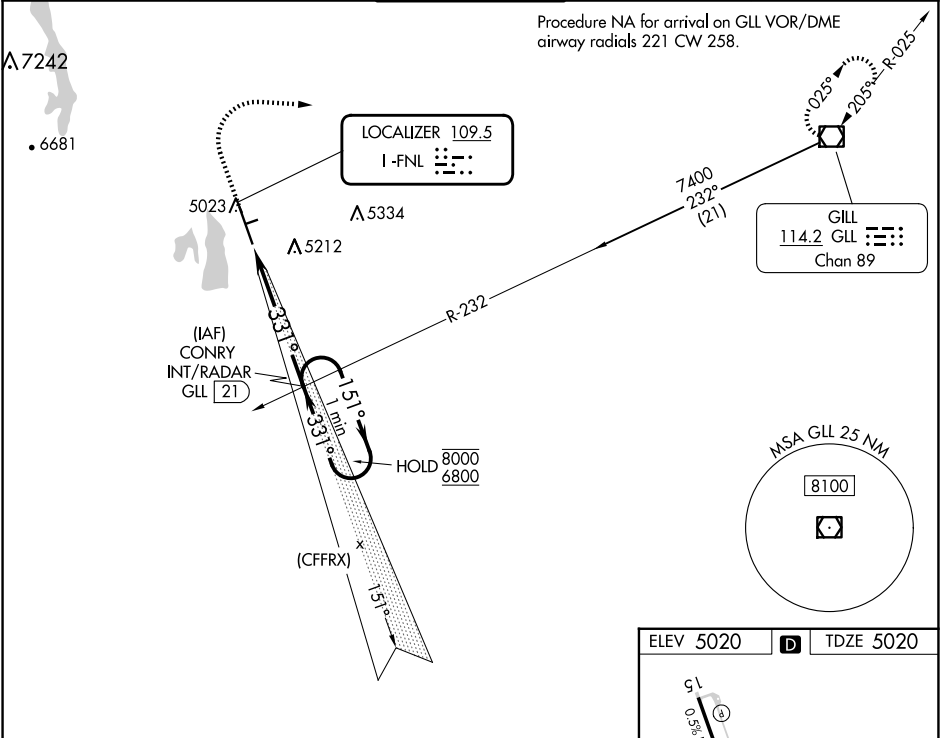
Flight Procedures Cover Page	Task Action: FLIGHT CHECK	Task Type: IAP	Estimated Chart Date: 11/27/2025	APWS Task ID: 5F62E8752CBE4CED987C328652B2EEF3	APWS Project ID: 42BDCE6380324D9688155B927E39DF01
Procedure: ILS OR LOC RWY 33 AMDT 8		Enroute: NO	Specialist: Kuklish, Thomas		Agreement Number:
Airport ID: KFNL			Airport City: FORT COLLINS/LOVELAND		State: CO
Facility ID: FNL	Facility Type: ILS	Flight Inspection Remark Type: New FC Slot			
<div>Procedure Comments: ACTIVE AIRNAV DATA USED FOR KFNL. CONTACT KYLE THOMPSON 405-954-2135</div> <div><div>QUALITY 6 CHECKED</div><div>SN 7/28/25</div><div>QUALITY 38 CHECKED</div></div>					




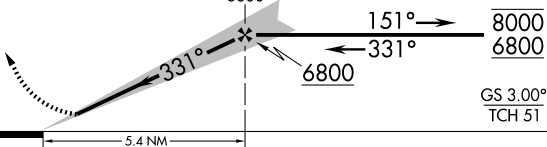
LOC I-FNL 109.5	APP CRS 331°	Rwy Idg TDZE Apt Elev 8500 5020 5020
---------------------------	------------------------	--

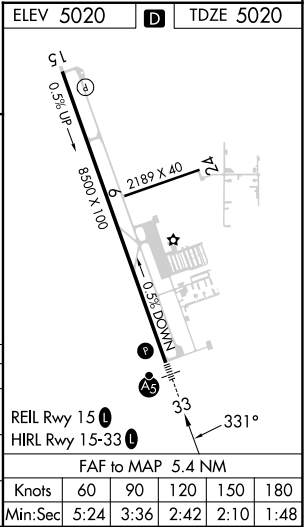
OLD

ILS or LOC RWY 33
NORTHERN COLORADO RGNL (FNL)

⚠ Circling Rwy 24 NA at night.		MALSR 	MISSED APPROACH: Climb to 5700 then climbing right turn to 8000 direct GLL VOR/DME and hold.	
ATIS 135.075	DENVER APP CON 134.85 251.125	NOCO TOWER ★ 118.4 (CTAF)	GND CON 121.65	CLNC DEL 120.25 (When twr closed)



5700	8000	GLL	CONRY INT/RADAR GLL 21				One Minute Holding Pattern	
								
CATEGORY			A	B	C	D		
S-ILS 33			5220-½ 200 (200-½)					
S-LOC 33			5500-½ 480 (500-½)			5500-1 480 (500-1)		
CIRCLING			5500-1 480 (500-1)	5520-1 500 (500-1)	5520-1½ 500 (500-1½)	5700-2¼ 680 (700-2¼)		

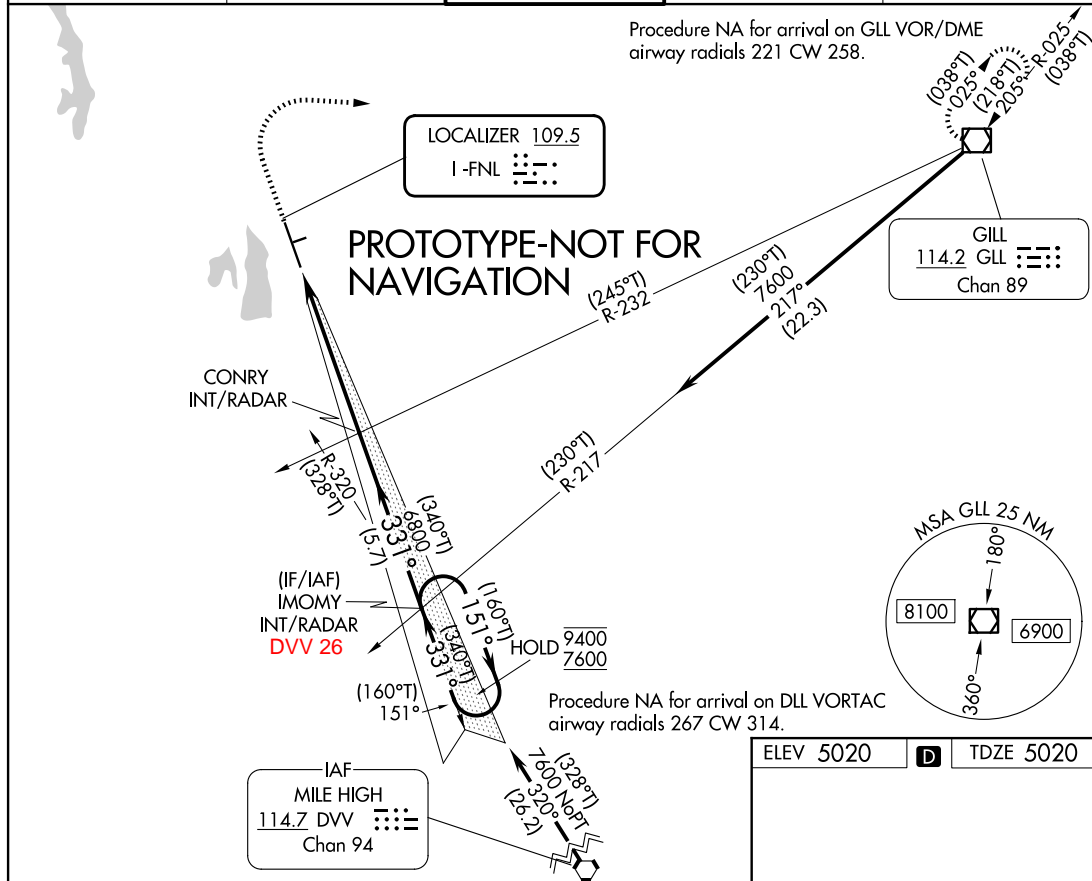


LOC I-FNL 109.5	APP CRS 331°	Rwy Ldg TDZE Apt Elev 8500 5020 5020
---------------------------	------------------------	--

ILS or LOC RWY 33

NORTHERN COLORADO RGNL (F'NL)

<div><div></div><div></div></div> <div>Circling Rwy 24 NA at night. For inop ALS, increase S-LOC 33 Cat C/D visibility to 1$\frac{3}{8}$ SM.</div>		<div>MALSR</div> <div><div></div><div>ALS</div></div>	<div>MISSED APPROACH: Climb to 5700 then climbing right turn to 8000 direct GLL VOR/DME and hold.</div>		
<div>ATIS</div> <div>135.075</div>	<div>DENVER APP CON</div> <div>134.85 251.125</div>	<div>NOCO TOWER ★</div> <div>118.4 (CTAF) 0</div>	<div>GND CON</div> <div>121.65</div>	<div>CLNC DEL</div> <div>120.25</div> <div>(When twr closed)</div>	



5700

8000

GLL

↑

↷

CONRY INT/RADAR

IMOMY INT/RADAR

One Minute Holding Pattern

6800

(340°T)

331°

6800

151°

(160°T)

→

←

(331°)

(340°T)

9400

7600

GS 3.00°

TCH 51

5.4 NM

5.7 NM

CATEGORY	A	B	C	D
S-ILS 33	5220-½ 200 (200-½)			
S-LOC 33	5500-½ 480 (500-½)			
CIRCLING	5500-1 480 (500-1)	5520-1 500 (500-1)	5520-1½ 500 (500-1½)	5700-2¼ 680 (700-2¼)

REIL Rwy 15

HIRL Rwy 15-33

(340°T)

331°

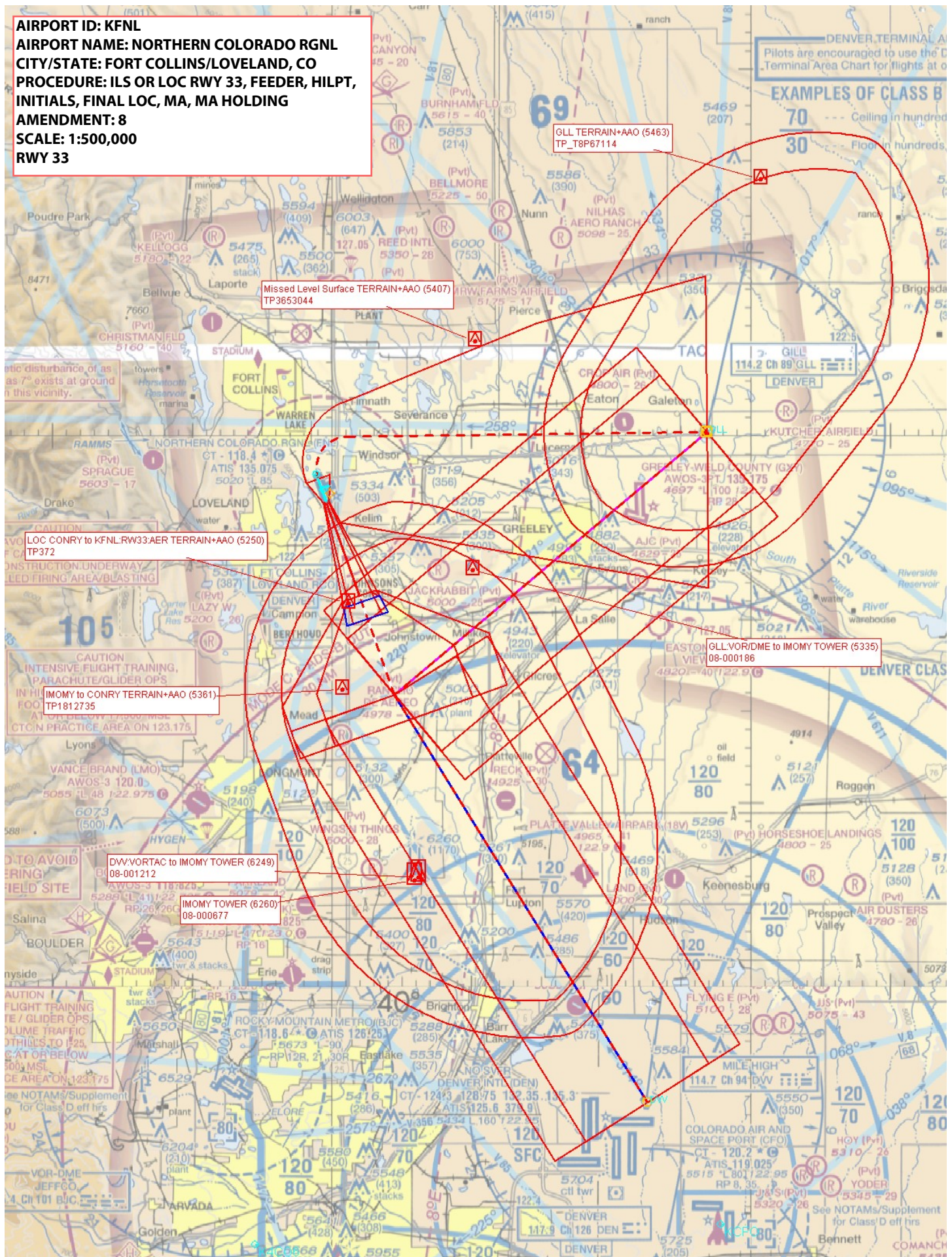
FAF to MAP 5.4 NM

Knots	60	90	120	150	180
Min:Sec	5:24	3:36	2:42	2:10	1:48

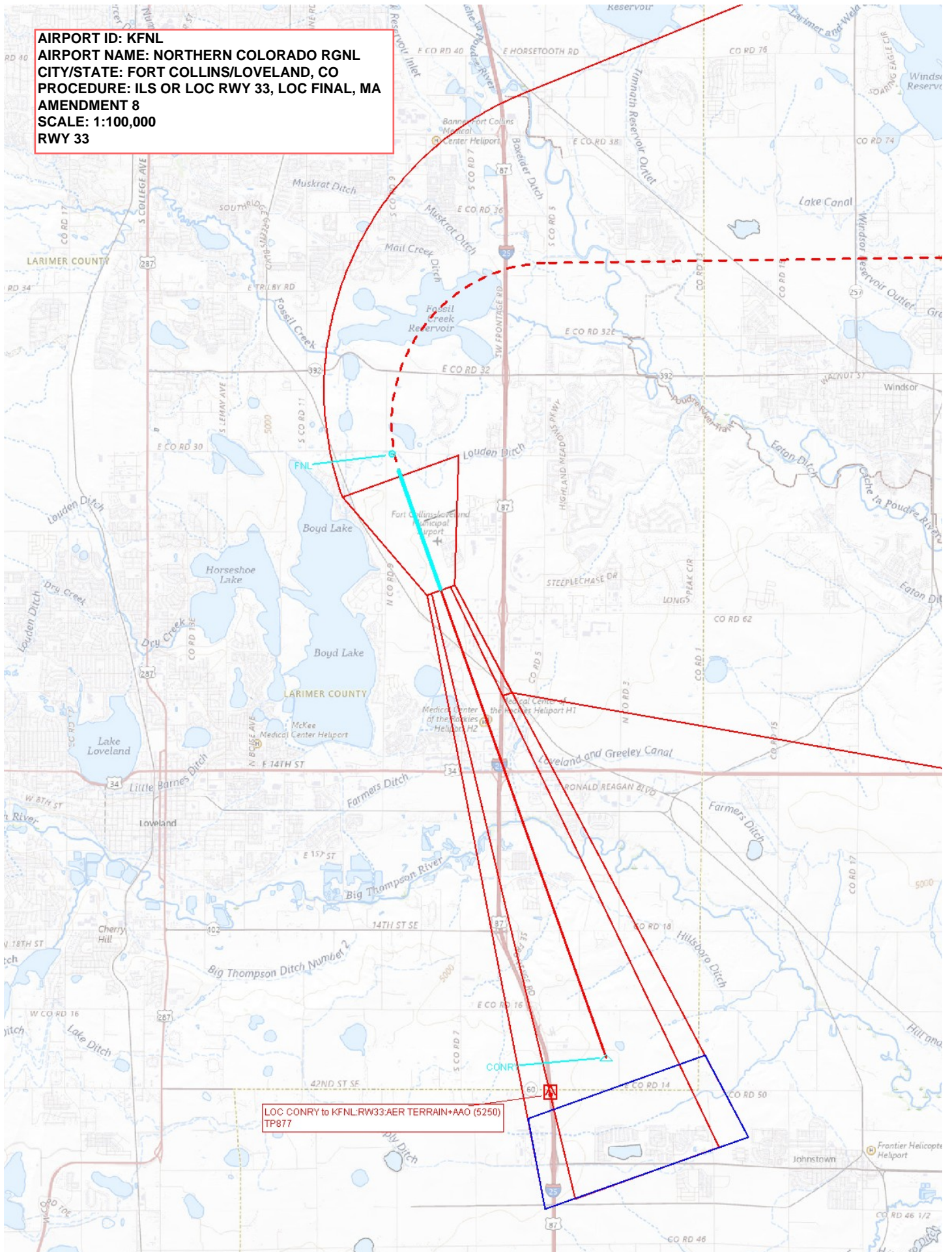
AUTOMATED AL-5677 ILS or LOC RWY 33

SW-1
7-14-25
COMPILER: HD
REVIEWER:
DBL CHKR:
EFF: FIG

AIRPORT ID: KFNL
AIRPORT NAME: NORTHERN COLORADO RGNL
CITY/STATE: FORT COLLINS/LOVELAND, CO
PROCEDURE: ILS OR LOC RWY 33, FEEDER, HILPT,
INITIALS, FINAL LOC, MA, MA HOLDING
AMENDMENT: 8
SCALE: 1:500,000
RWY 33



AIRPORT ID: KFNL
AIRPORT NAME: NORTHERN COLORADO RGNL
CITY/STATE: FORT COLLINS/LOVELAND, CO
PROCEDURE: ILS OR LOC RWY 33, LOC FINAL, MA
AMENDMENT 8
SCALE: 1:100,000
RWY 33



AIRPORT ID: KFNL
AIRPORT NAME: NORTHERN COLORADO RGNL
CITY/STATE: FORT COLLINS/LOVELAND, CO
PROCEDURE: ILS OR LOC RWY 33 , ILS FINAL, MA
AMENDMENT 8
SCALE: 1:100,000
RWY 33

