

Flight Procedures Cover Page	Task Action: Amendment	Task Type: Textual DP	Estimated Chart Date: 10/31/2024	APWS Task ID: 5F3279AB290D423BB3FF2494B16AC51B	APWS Project ID: F2090CB6BFCC48E0AAF5763D040777E4
Procedure: TAKEOFF MINIMUMS AND OBSTACLE DP AMDT 1B		Enroute: NO	Specialist: Neidigh, Jon		Agreement Number:
Airport ID: KSAT			Airport City: SAN ANTONIO		State: TX
Facility ID:	Facility Type:	Flight Inspection Remark Type:			
<div>Procedure Comments: ABBREVIATED AMENDMENT PROCESSED IAW TECHNICAL SUPPORT GROUP (AJF-17) MEMO DATED 07/07/2021 GUIDANCE FOR PROCEDURAL CHANGES REQUIRING FLIGHT INSPECTION/VALIDATION CONTACT CASIMIR TABAKA 405-954-7931</div> <div><div>Digitally signed by JOSEPH L ZEDER Aug 16, 2024</div><div>QUALITY 8 CHECKED</div></div>					



SAN ANTONIO INTL (KSAT)
SAN ANTONIO, TX
ODP, RWY 4
1:500,000

CTC SAN ANTONIO APP WITHIN
20 NM ON 123.1 307.0

CTC SAN ANTONIO APP WITHIN
20 NM ON 124.45 335.625

CTC SAN ANTONIO APP WITHIN
20 NM ON 118.05 353.5

CTC SAN ANTONIO APP W
20 NM ON 128.05 218.1

[illegible]

[illegible]

[illegible]

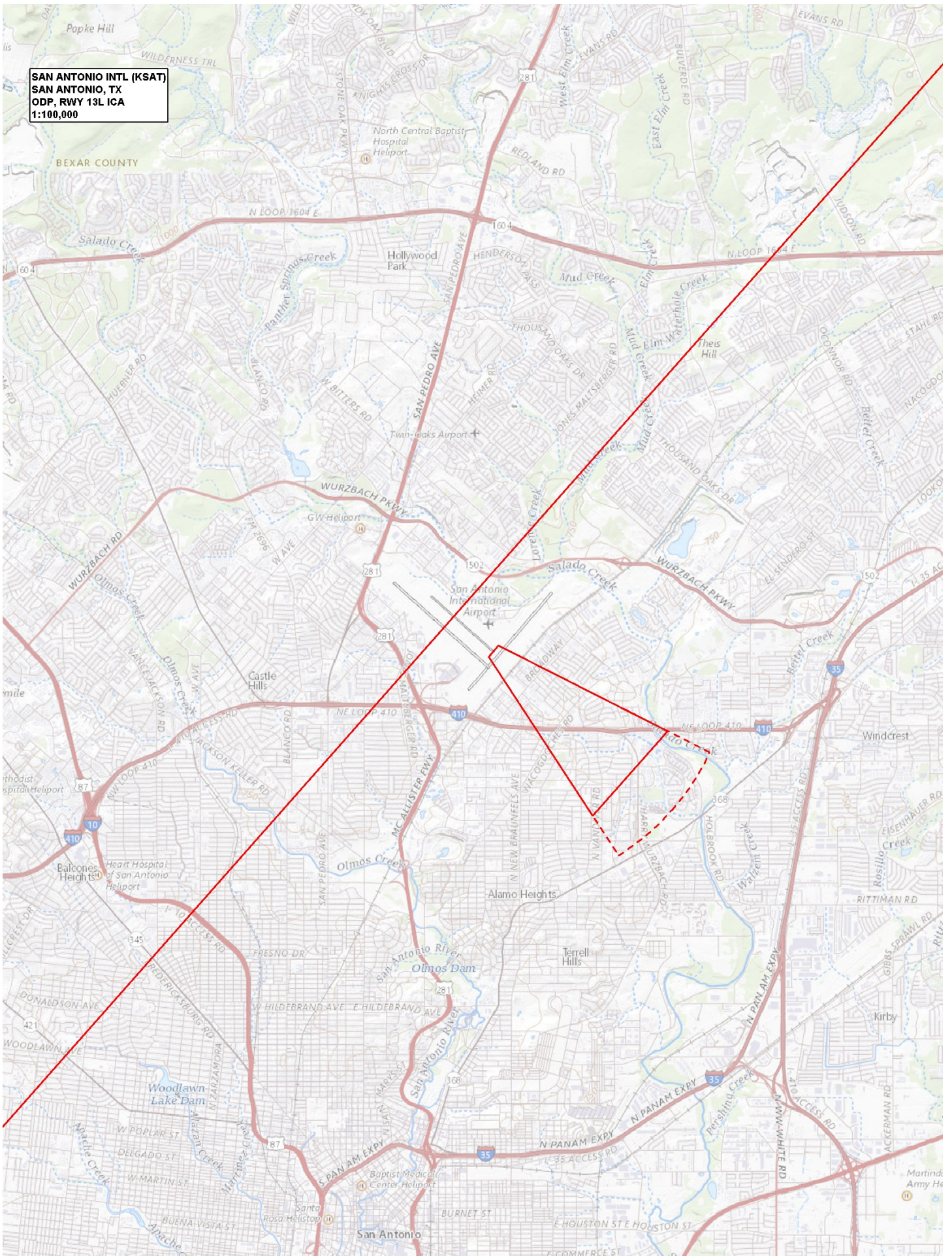
[illegible]

[illegible]

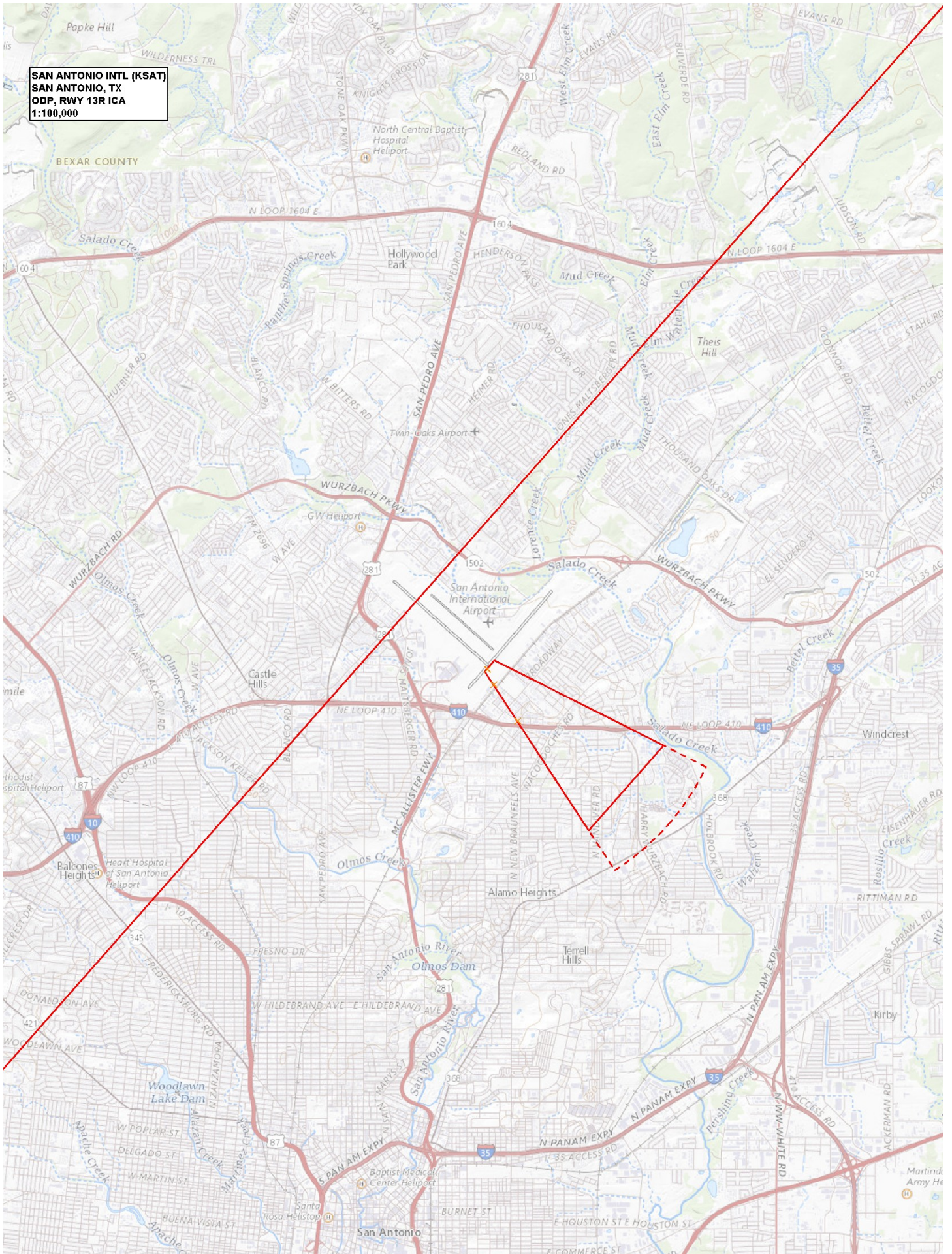
SAN ANTONIO INTL (KSAT)
SAN ANTONIO, TX
ODP, RWY 4 ICA
1:100,000

The map displays the San Antonio River and its tributaries, including the San Antonio River, Olmos Creek, and Salado Creek. Major highways shown are I-35, I-10, and I-410. The San Antonio International Airport is located near the center of the map. Other landmarks include the Woodlawn Lake Dam, the San Antonio River, and various residential and commercial areas. A red dashed line outlines a specific area in the city, likely indicating a project site or a specific geographic boundary.

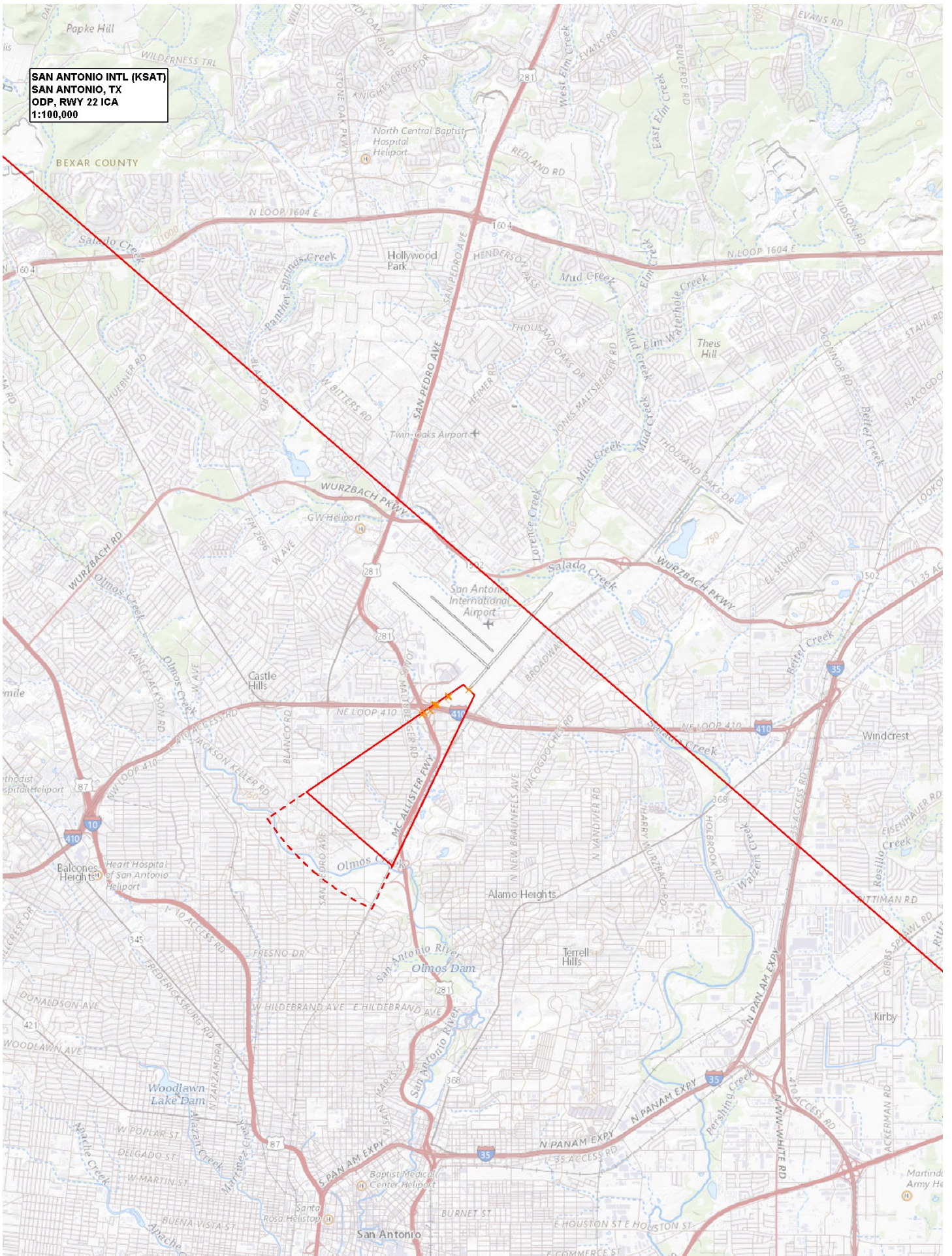
SAN ANTONIO INTL (KSAT)
SAN ANTONIO, TX
ODP, RWY 13L ICA
1:100,000



SAN ANTONIO INTL (KSAT)
SAN ANTONIO, TX
ODP, RWY 13R ICA
1:100,000



SAN ANTONIO INTL (KSAT)
SAN ANTONIO, TX
ODP, RWY 22 ICA
1:100,000



SAN ANTONIO INTL (KSAT)
SAN ANTONIO, TX
ODP, RWY 31R ICA
1:100,000

