

Flight Procedures Cover Page	Task Action: FLIGHT CHECK	Task Type: IAP	Estimated Chart Date: 07/11/2024	APWS Task ID: 5F2A79DFCC834A5C83AD9D0030E81DE8	APWS Project ID: 444D9F9A66DF4BEB87A18BCAD7779C28
Procedure: RNAV (GPS) Y RWY 36L AMDT 3		Enroute: NO	Specialist: Blanco, Joseph		Agreement Number:
Airport ID: KHRL			Airport City: HARLINGEN		State: TX
Facility ID:	Facility Type:	Flight Inspection Remark Type: New FC Slot			

Procedure Comments:

AIRPORT MAGVAR CHANGED FROM 5E/2005 TO 3E/2025 - RUNWAY RENUMBERED.
CONTACT CASIMIR TABAKA AJV-A432 (405) 954-7931

HARD DATE

04/26/24: THIS IS A CORRECTED COPY OF THE FORM APPROVED ON 04/05/2024.
1. ADDED NOTE "VGSI AND RNAV GLIDEPATH NOT COINCIDENT (VGSI ANGLE {ANGLE}/TCH {FEET})" - IAW 8260.19I 8-6-9.

05/06/24: THIS IS A CORRECTED COPY OF THE FORM APPROVED ON 04/05/2024.
1. TERMINAL ROUTES - REMOVED IF LEGS STARTING AT KAHNS AND ALUDE -LEGS FROM ALUDE AND KAHNS REMOVED AT FTP REQUEST.
2. NOTES - REMOVED NOTE "SEE PLANVIEW FOR MULTIPLE IF LOCATIONS" - NOTE NO LONGER NEEDED AFTER REMOVING MULTIPLE IF LEGS.
3. NOTES - REMOVED SPEED ICON NOTES AT ALUDE AND KAHNS - LEGS FROM ALUDE AND KAHNS REMOVED AT FTP REQUEST.
4. ADDITIONAL FLIGHT DATA - REMOVED CHART AT OR ABOVE 4000 AT KAHNS - LEG FROM KAHNS REMOVED AT FTP REQUEST.
5. ADDITIONAL FLIGHT DATA - CHANGED CHART MANDATORY 1600 AT FENKU TO CHART AT OR ABOVE 1600 AT FENKU - DUE TO REDESIGN, MANDATORY CROSSING AT FENKU IS NO LONGER NEEDED.

THE FOLLOWING 8260-2 FIXES HAVE BEEN DELETED DUE TO THE REDESIGN OF THIS PROCEDURE: ADMEY, AHACH, CIVBU, HAPUV, KIMVE, PLIER

QUALITY
21
CHECKED

J ZEDER 04/26/2024

QUALITY
16
CHECKED

J ZEDER 05/06/2024

QUALITY
38
CHECKED

QUALITY
41
CHECKED

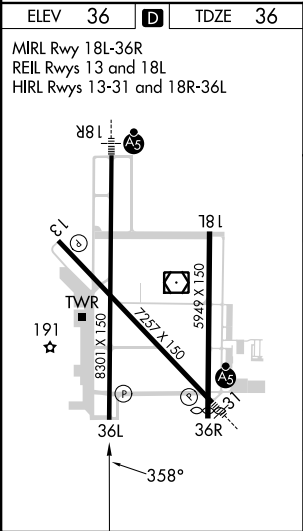
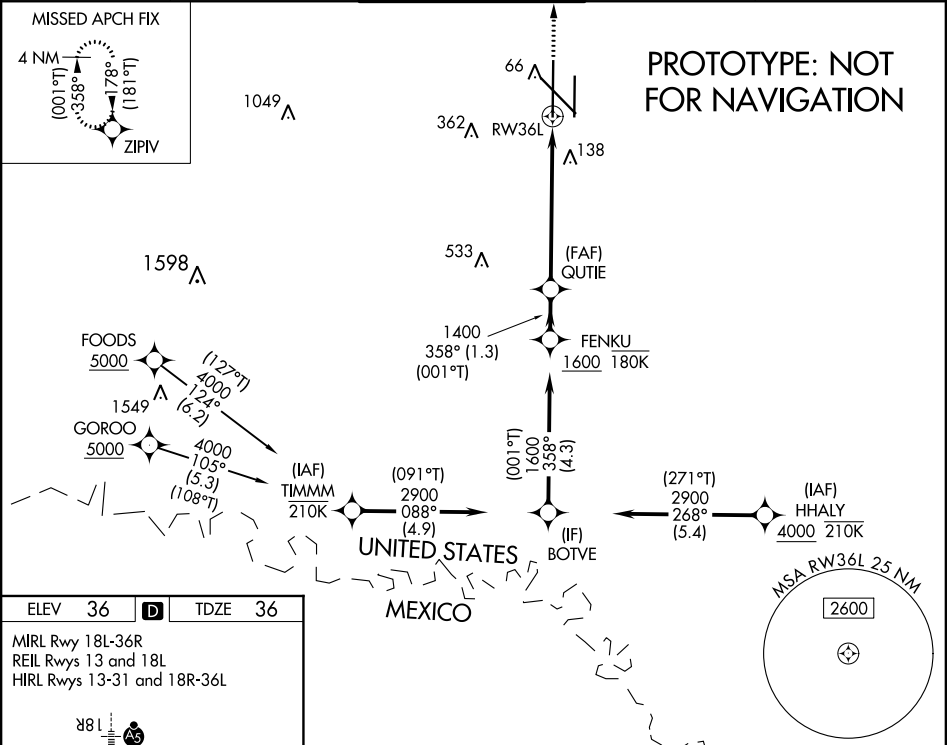
WAAS CH 86530 W36B	APP CRS 358°	Rwy Idg TDZE Apt Elev	8301 36 36
--	------------------------	-----------------------------	---------------------------------------

RNAV (GPS) Y RWY 36L

VALLEY INTL (HRL)

RNP APCH - GPS.			MISSED APPROACH: Climb to 2000 direct ZIPV and hold.	
▼ For uncompensated Baro-VNAV systems, LNAV/VNAV NA below -1°C or above 54°C. Baro-VNAV and VDP NA when using Port Isabel altimeter setting. When local altimeter setting not received, use Port Isabel altimeter setting and increase LPV DA to 278 feet; increase LNAV/VNAV DA to 447 feet and all visibilities ½ SM. Increase all MDAs 60 feet, and LNAV visibility Cat C and D ½ SM; and Circling visibility Cats C and D ¼ SM.				

ATIS 124.85	VALLEY APP CON 120.7 279.5	HARLINGEN TOWER ★ 119.3(CTAF) 0 317.6	GND CON 121.7	UNICOM 122.95
-----------------------	--------------------------------------	---	-------------------------	-------------------------



2000	ZIPV	VGSI and RNAV glidepath not coincident (VGSI Angle 3.00/TCH 59).			FENKU
↑	★	1.3 NM to RW36L	1400	358°	1600
		1.3 NM	2.8 NM	1.3 NM	GP 3.00° TCH 55
CATEGORY	A	B	C	D	
LPV DA	236-¾		200 (200-¾)		
LNAV/VNAV DA	405-1		369 (400-1)		
LNAV MDA	500-1	464 (500-1)	500-1¾	464 (500-1¾)	
CIRCLING	500-1 464 (500-1)	560-1 524 (600-1)	600-1½ 564 (600-1½)	680-2 644 (700-2)	

WAAS CH 86530 W35B	APP CRS 356°	Rwy Idg 8301 TDZE 36 Apt Elev 36
--------------------------	-----------------	---

OLD

RNAV (GPS) Y RWY 35L

VALLEY INTL (HRL)

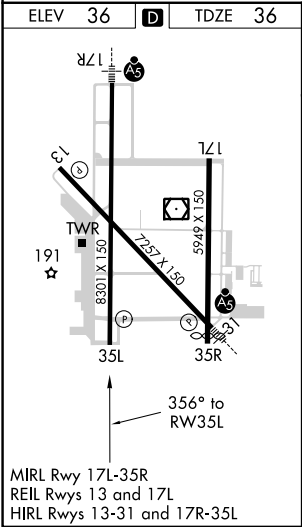
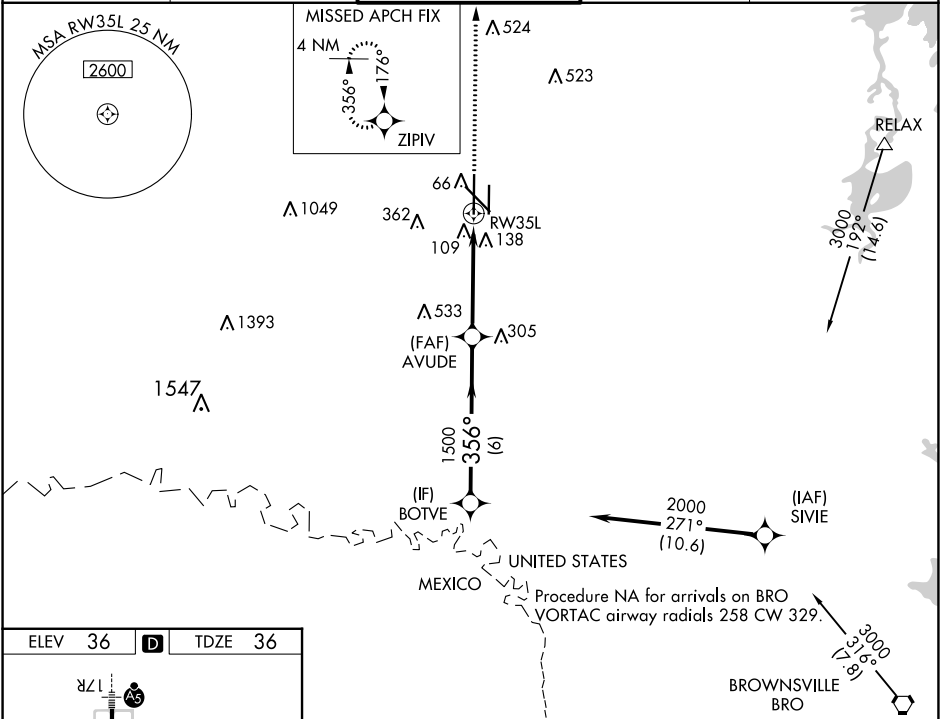
T

A

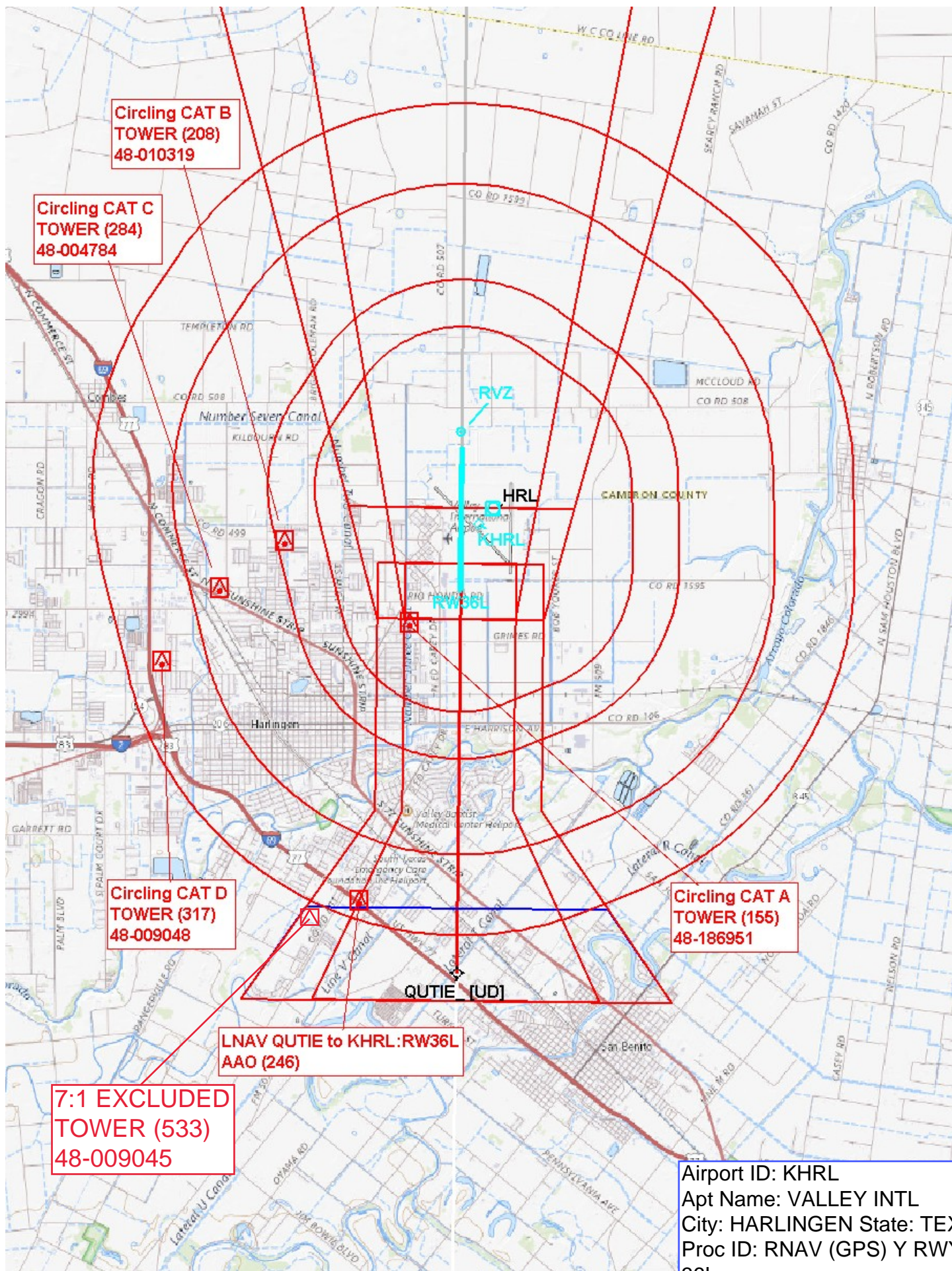
For uncompensated Baro-VNAV systems, LNAV/VNAV NA below -15°C (5°F) or above 54°C (130°F). DME/DME RNP-0.3 NA. When local altimeter setting not received, use Port Isabel altimeter setting: increase LPV DA to 328 feet and all visibilities 1/8 SM; increase LNAV/VNAV DA to 418 feet and all visibilities 1/8 SM; increase all MDAs 60 feet and visibility Cats C and D 1/4 SM. Baro-VNAV and VDP NA with Port Isabel altimeter setting.

MISSED APPROACH:
Climb to 2000 direct ZIPV and hold.

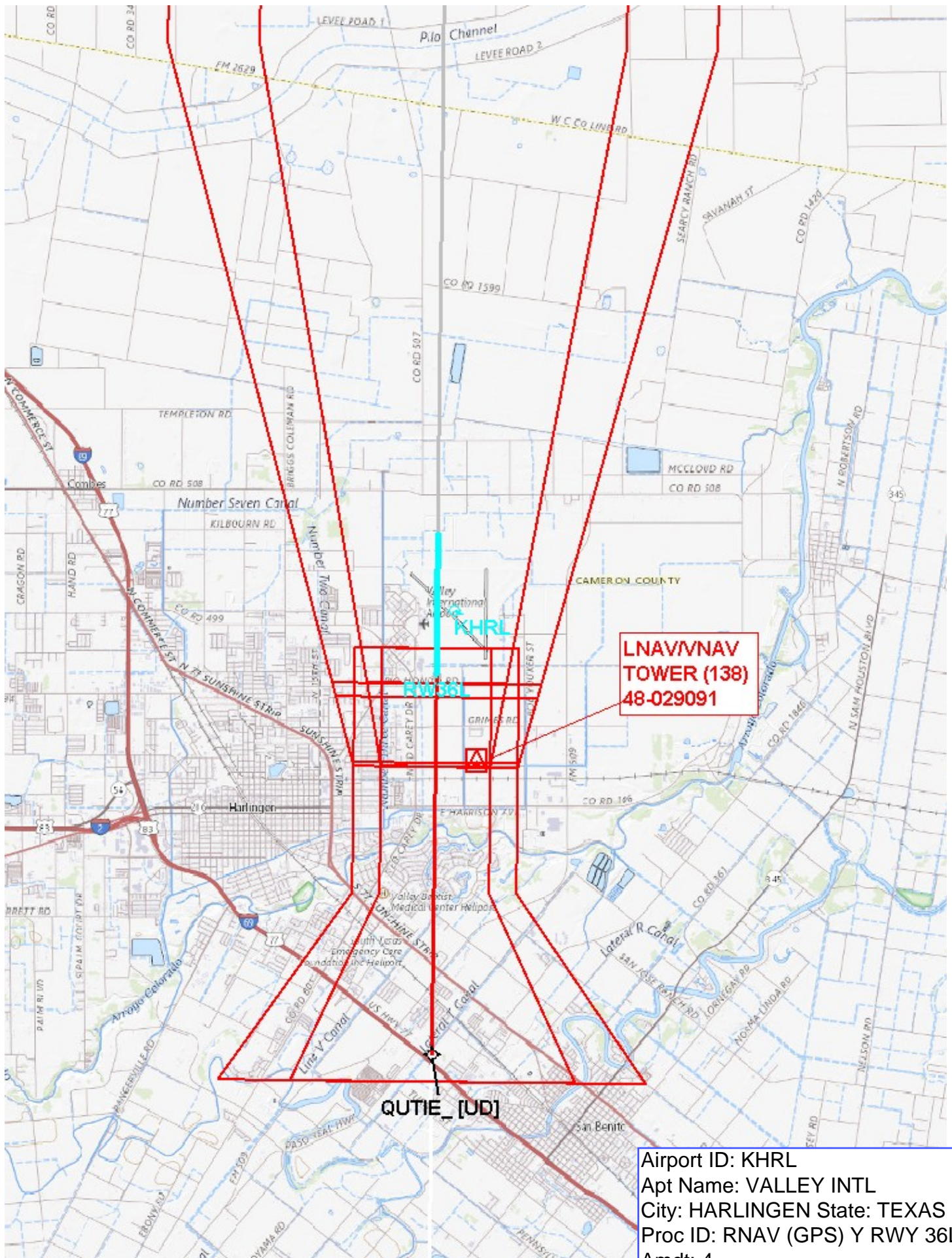
ATIS 124.85	VALLEY APP CON 120.7 279.5	HARLINGEN TOWER ★ 119.3 (CTAF) 317.6	GND CON 121.7	UNICOM 122.95
----------------	-------------------------------	---	------------------	------------------



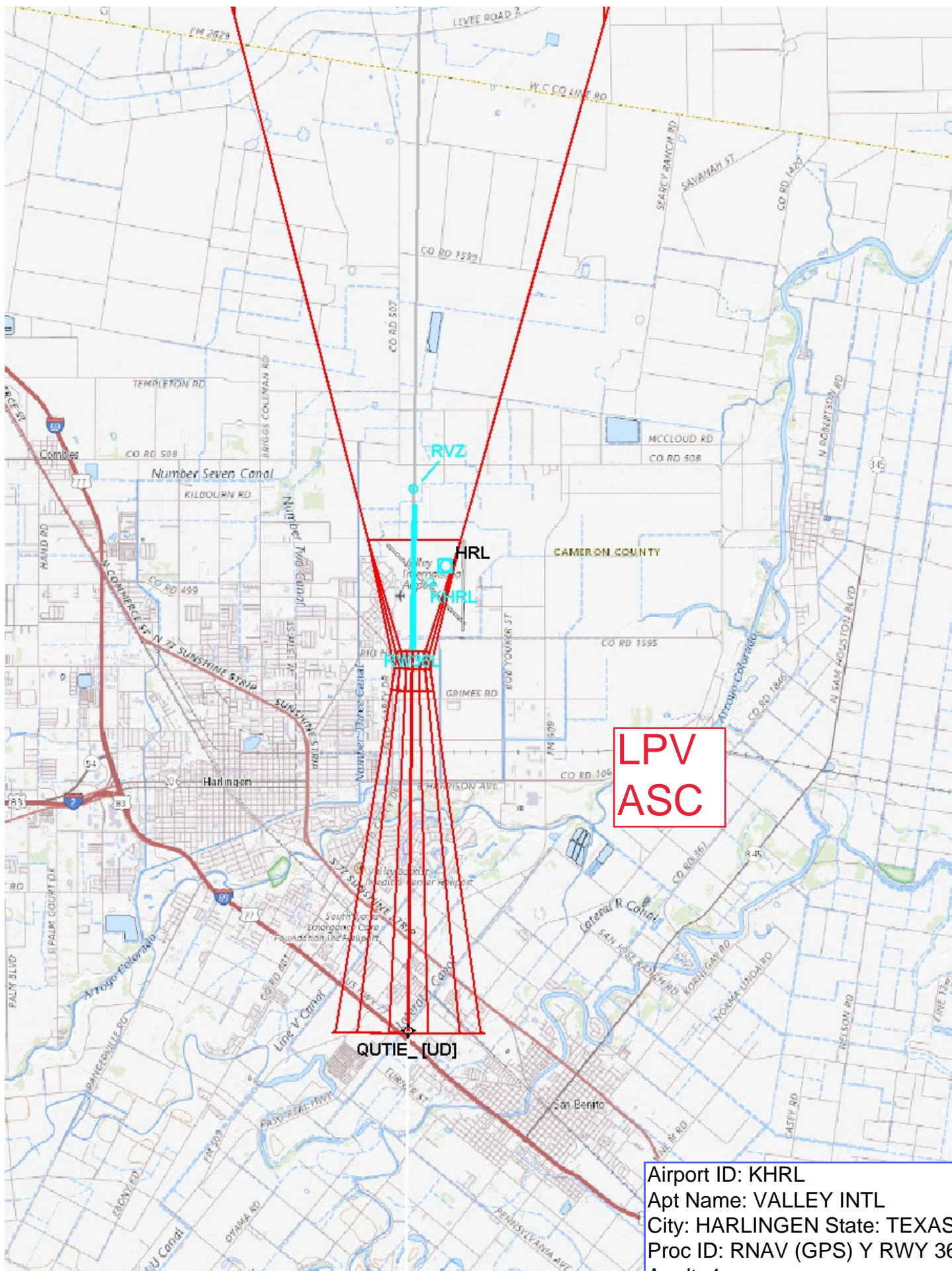
2000	ZIPV	* LNAV only	AVUDE	BOTVE
		* 1.3 NM to RW35L	1500	2000
			356°	GP 3.00° TCH 59
			1500	
			1.3 NM	3.1 NM
			6 NM	
CATEGORY	A	B	C	D
LPV DA	286-3/4	250 (300-3/4)		
LNAV/VNAV DA	376-1 1/8	340 (400-1 1/8)		
LNAV MDA	500-1 464 (500-1)	500-1 3/8 464 (500-1 3/8)		
CIRCLING	500-1 464 (500-1)	560-1 524 (600-1)	680-1 3/4 644 (700-1 3/4)	680-2 644 (700-2)



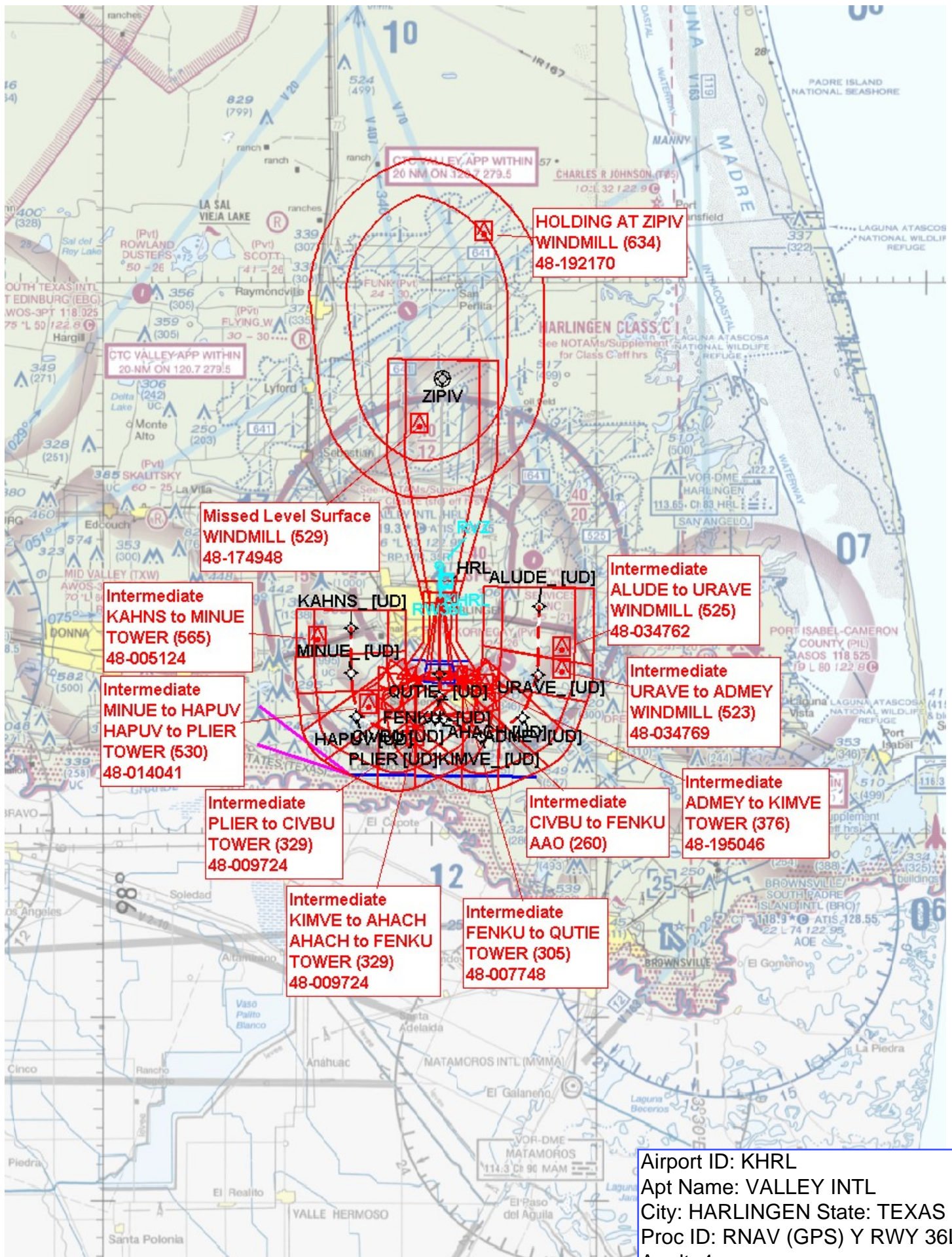
Airport ID: KHRL
Apt Name: VALLEY INTL
City: HARLINGEN State: TEXAS
Proc ID: RNAV (GPS) Y RWY
36L
Amdt: 4



Airport ID: KHRL
Apt Name: VALLEY INTL
City: HARLINGEN State: TEXAS
Proc ID: RNAV (GPS) Y RWY 36L
Amdt: 4
Scale: 1:100,000



Airport ID: KHRL
Apt Name: VALLEY INTL
City: HARLINGEN State: TEXAS
Proc ID: RNAV (GPS) Y RWY 36L
Amdt: 4
Scale: 1:100,000





Federal Aviation Administration

Initial Development Notification for AIRNAV Pending Records

To: Scott Jerden, Manager Aeronautical Data Team, AJV-A31

From: Bev Bordy, Manager Instrument Flight Procedures Projects Team, AJV-A4

Subject: **ACTION:** Request for Pending Records **KHRL__VALLEY INTL, , TX US**

The Magnetic Variation (MV) data for the airport(s) and/or facility(s) listed will be revised effective concurrent with the publication of the procedure(s) listed below. Estimated Chart Date: 7/11/2024

Current/Assigned MV E 5 2005 New MV E 3 2025

ECD	Airport ID	Procedure Name	AMDT #	Task Report Type Selections
7/11/2024	KHRL	ILS OR LOC RWY 18R AMDT 1 (SA CAT I & CAT II)		MAGVAR
7/11/2024	KHRL	ILS OR LOC RWY 36L ORIG (SA CAT I & CAT II)		MAGVAR
7/11/2024	KHRL	RNAV (GPS) RWY 36R AMDT 1		MAGVAR
7/11/2024	KHRL	RNAV (GPS) RWY18L AMDT 3		MAGVAR
7/11/2024	KHRL	RNAV (GPS) Y RWY 13 AMDT 3		MAGVAR
7/11/2024	KHRL	RNAV (GPS) Y RWY 18R AMDT 4		MAGVAR
7/11/2024	KHRL	RNAV (GPS) Y RWY 31 AMDT 4		MAGVAR
7/11/2024	KHRL	RNAV (GPS) Y RWY 36L AMDT 4		MAGVAR
7/11/2024	KHRL	RNAV (RNP) Z RWY 13 AMDT 1		MAGVAR
7/11/2024	KHRL	RNAV (RNP) Z RWY 18R AMDT 1		MAGVAR
7/11/2024	KHRL	RNAV (RNP) Z RWY 31 AMDT 2		MAGVAR
7/11/2024	KHRL	RNAV (RNP) Z RWY 36L AMDT 1		MAGVAR
7/11/2024	KHRL	TAKEOFF MINIMUMS ODP AMDT 1		MAGVAR
7/11/2024	KHRL	VOR RWY 18L AMDT 2		MAGVAR
7/11/2024	KHRL	VOR RWY 18R AMDT 1		MAGVAR
7/11/2024	KHRL	VOR RWY 36L AMDT 1		MAGVAR
7/11/2024	KHRL	VOR Y OR TACAN RWY 31 AMDT 1C		MAGVAR
7/11/2024	KHRL	VOR Z RWY 31 AMDT 1A		MAGVAR

NAVAID ID / RWY	Type / Old No.	Use / New RWY/Note
I-HRL	ILS	ILS
RWY	35	36
RWY	17	18

RUNWAY NUMBERS 17/35 WILL CHANGE TO 18/36. RUNWAY NUMBERS 13/31 WILL NOT CHANGE.

VOR NAVAIDS are not being updated at this time.

IF you have any questions please notify: Casimir.L.Tabaka@faa.gov Processed Wednesday, December 27, 2023