



Flight Procedures Cover Page	Task Action: FLIGHT CHECK	Task Type: IAP	Estimated Chart Date: 01/25/2024	APWS Task ID: 5EDCDA7F44D645BBA2F5533721CB94AA	APWS Project ID: BB82E5B707094E66B0E982DF2D80E3B5
Procedure: RNAV (GPS) Y RWY 13R AMDT 2		Enroute: NO	Specialist: Johnson, Raymond		Agreement Number:
Airport ID: KSAT			Airport City: SAN ANTONIO		State: TX
Facility ID:	Facility Type:	Flight Inspection Remark Type: New FC Slot			
<div>Procedure Comments: ACTIVE DATA USED FOR KSAT AIRPORT AND RUNWAYS.</div> <div>CONTACT: ALLAN WILL, TEAM 2 SUBTEAM-C MANAGER, 405.954.6103</div> <div><div>Digitally signed by MICHAEL GARRITY Sep 05, 2023</div><div>QUALITY 26 CHECKED</div><div>QUALITY 41 CHECKED</div></div>					

FIPC BASIC FORM							
PROCEDURE: RNAV (GPS) Y RWY 13R AMDT 2			AIRPORT NAME: SAN ANTONIO INTL		AIRPORT ID: KSAT	SPECIAL CONTROL NO: OG-10-062-23	
FAC ID: KSAT13R.02Y		CITY: SAN ANTONIO			ST: TX	ORIG CHART DATE: 01/25/2024	
DFL TYPE: PROC/S	THIRD PARTY: <input type="checkbox"/> YES	EST. TIME ON SITE: 0.4	REIMB. NUMBER:		PTS TASK ID: 5EDCDA7F44D645BBA2F5533721CB94AA		
PREFLIGHT NOTES							
REVIEWER:					DATE:		
COMMENTS:					CHECK ONE:		
					<input type="checkbox"/> FLT CK REQ <input type="checkbox"/> NFCR <input type="checkbox"/> REJECT		
							YES
					CPV COMPLETE?		X
PROCEDURE RESULTS							
INSPECTION DATE: 11/06/2023		CREW #: VN423	N #: N66	INSTRUMENT PROCEDURE STATUS: <input checked="" type="checkbox"/> SAT <input type="checkbox"/> SAT W/CHANGES <input type="checkbox"/> UNSAT		ARINC CODING: <input checked="" type="checkbox"/> SAT <input type="checkbox"/> SAT/GOLD <input type="checkbox"/> UNSAT	
FLIGHT INSPECTOR SIGNATURE: terry hester @ 11/06/2023 22:23			PRINTED NAME: HESTER, TERRY LEE				NOTAM INITIATED? <input type="checkbox"/> YES <input checked="" type="checkbox"/> NO
FLIGHT INSPECTOR REMARKS: San Antonio International, San Antonio, TX, RNAV (GPS) Y RWY 31L AMDT 2. Flown Sat.							
IN-FLIGHT OBSTACLE REPORT							
OBSTRUCTION ID #:	COORDINATES OR LOCATION:		GNSS ALTITUDE (MSL):		BAROMETRIC ALTITUDE (MSL):		HEIGHT ABOVE GROUND LEVEL:

WAAS CH 82409 W13A	APP CRS 128°	Rwy Idg 8502 TDZE 809 Apt Elev 809
--	------------------------	---

RNAV (GPS) Y RWY 13R
SAN ANTONIO INTL (SAT)

RNP APCH - GPS.				ALSF-2 	MISSED APPROACH: Climb to 3100 direct POYIG and track 171° to EMBOW and hold.	
 Circling NA northwest of Rwys 4 and 13R . For uncompensated Baro-VNAV systems, LNAV/VNAV NA below -5°C or above 54°C. For inop ALS, increase LNAV/VNAV all Cats visibility to RVR 6000 and LNAV Cats C and D visibility to 1% SM.						
D-ATIS 118.9	SAN ANTONIO APP CON 125.1 307.0		SAN ANTONIO TOWER 119.8 257.8	GND CON 121.9 348.6	CLNC DEL 126.7	CPDLC

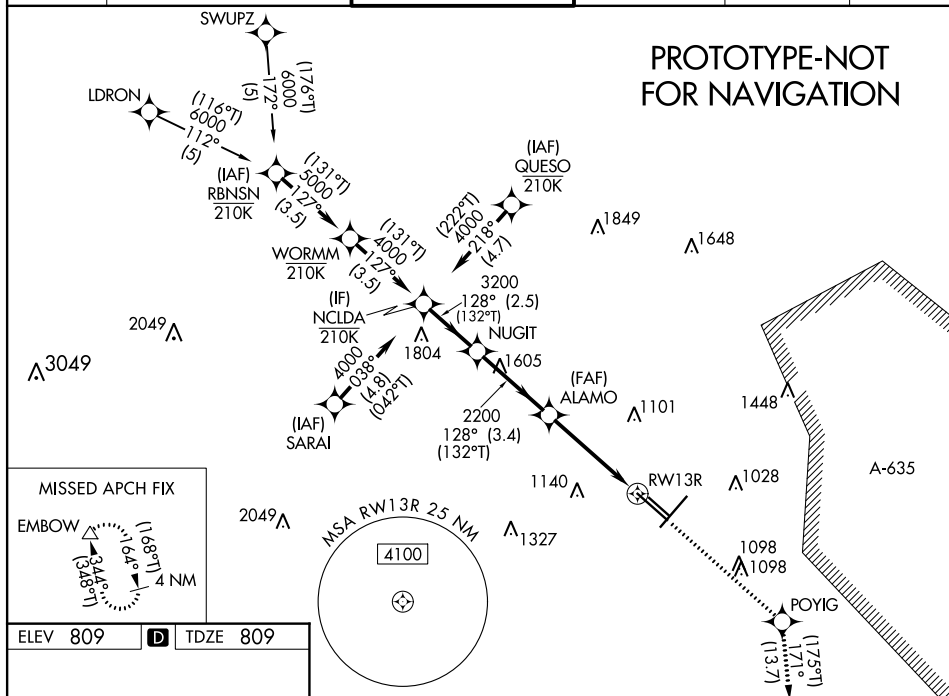
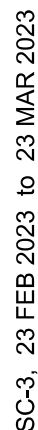


Figure 1-1 is an example of a 4-segment RNAV approach chart. The chart shows a 4-segment RNAV approach for RW13R. The segments are: 1. TDZ/CL Rwy 13R, 2. REIL Rwy 13L, 22 and 31R, 3. MIRL Rwy 13L-31R, 4. MIRL Rwy 4-22 and 13R-31L. The chart includes various altitudes, distances, and symbols for the approach.

RNAV (GPS) Y RWY 13R
SAN ANTONIO INTL (SAT)

MISSED APPROACH: Climb to 3100 direct POYIG and track 171° to EMBOW and hold.

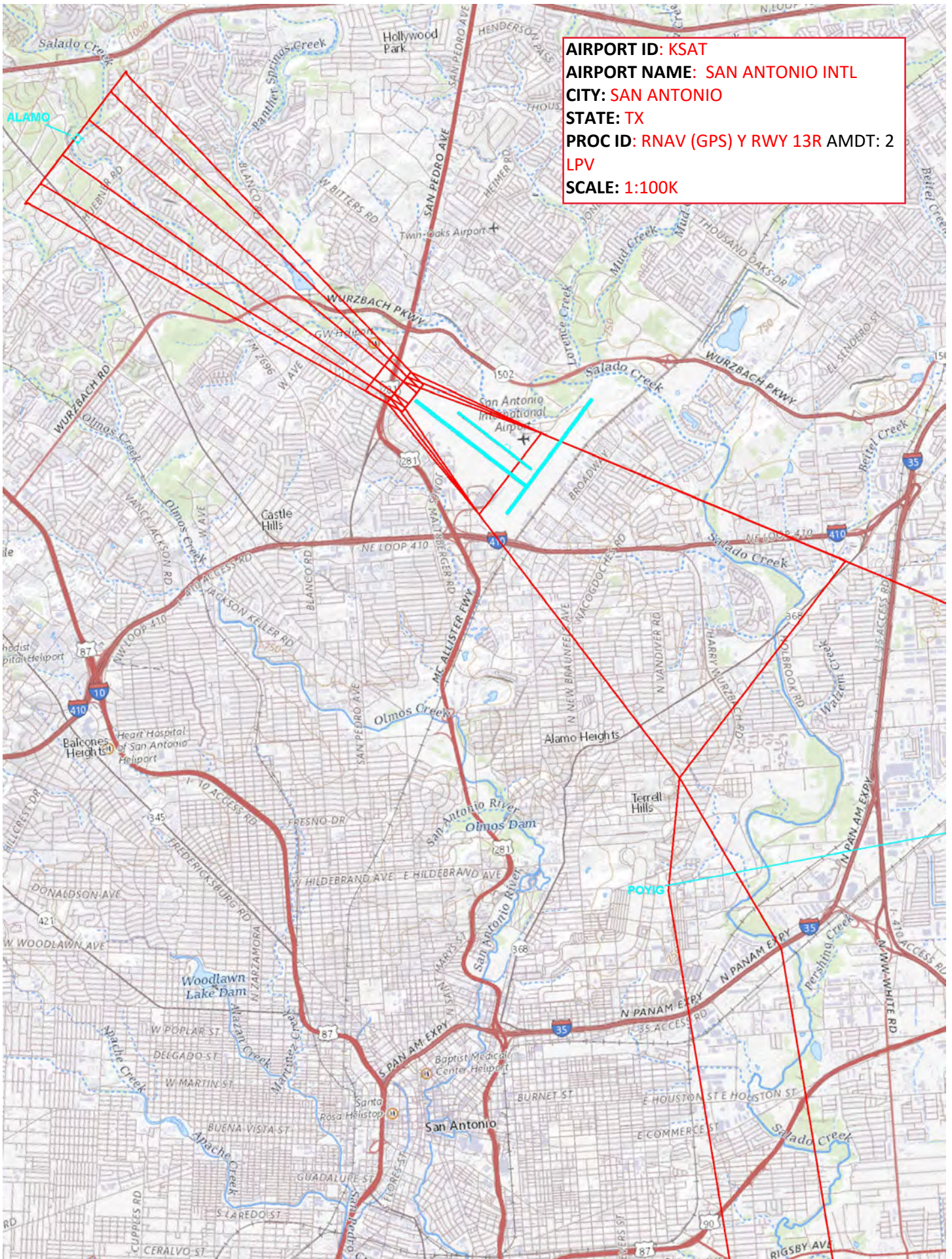
CPDLC



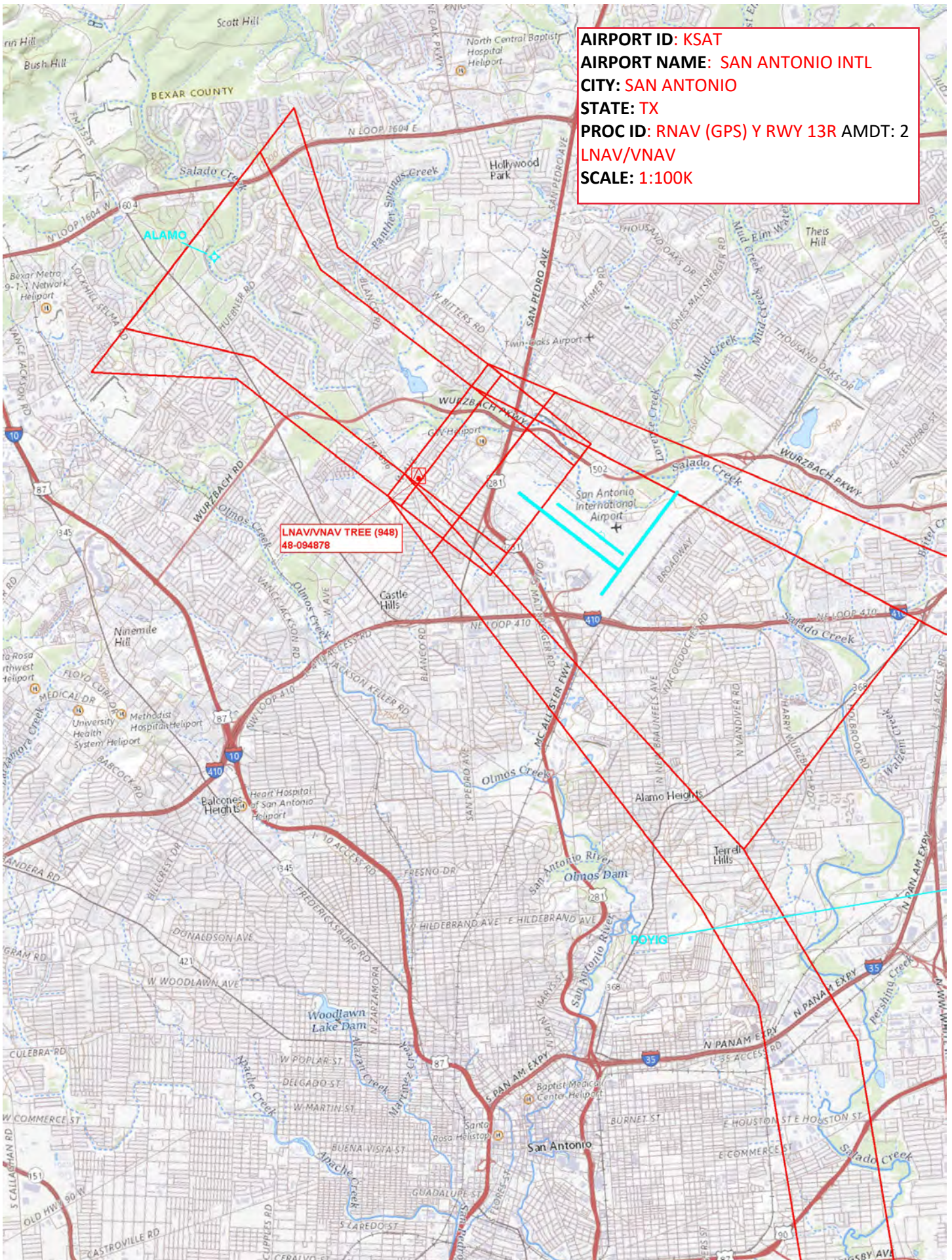
4 NM Holding Pattern HASDO		3100 	POYIG 	tr 171°	EMBOW
3500 ← 308° 128° → GP 3.00° TCH 58 VGSI and RNAV glidepath not coincident (VGSI Angle 3.00/TCH 75).		YEBUP 2800 128°	*2.3 NM to RW13R	*LNAV only.	
		2800 6.1 NM	3.7 NM	2.3 NM RW13R	
CATEGORY	A	B	C	D	
LPV DA	1107/24		298 (300-½)		
LNAV/VNAV DA	1340-1⅜		531 (600-1⅜)		
LNAV MDA	1620/24 811 (900-½)	1620/40 811 (900-¾)	1620-1⅞ 811 (900-1⅞)		
CIRCLING	1620-1¼ 811 (900-1¼)		1620-2½ 811 (900-2½)	1620-2¾ 811 (900-2¾)	

RNAV (GPS) Y RWY 13R

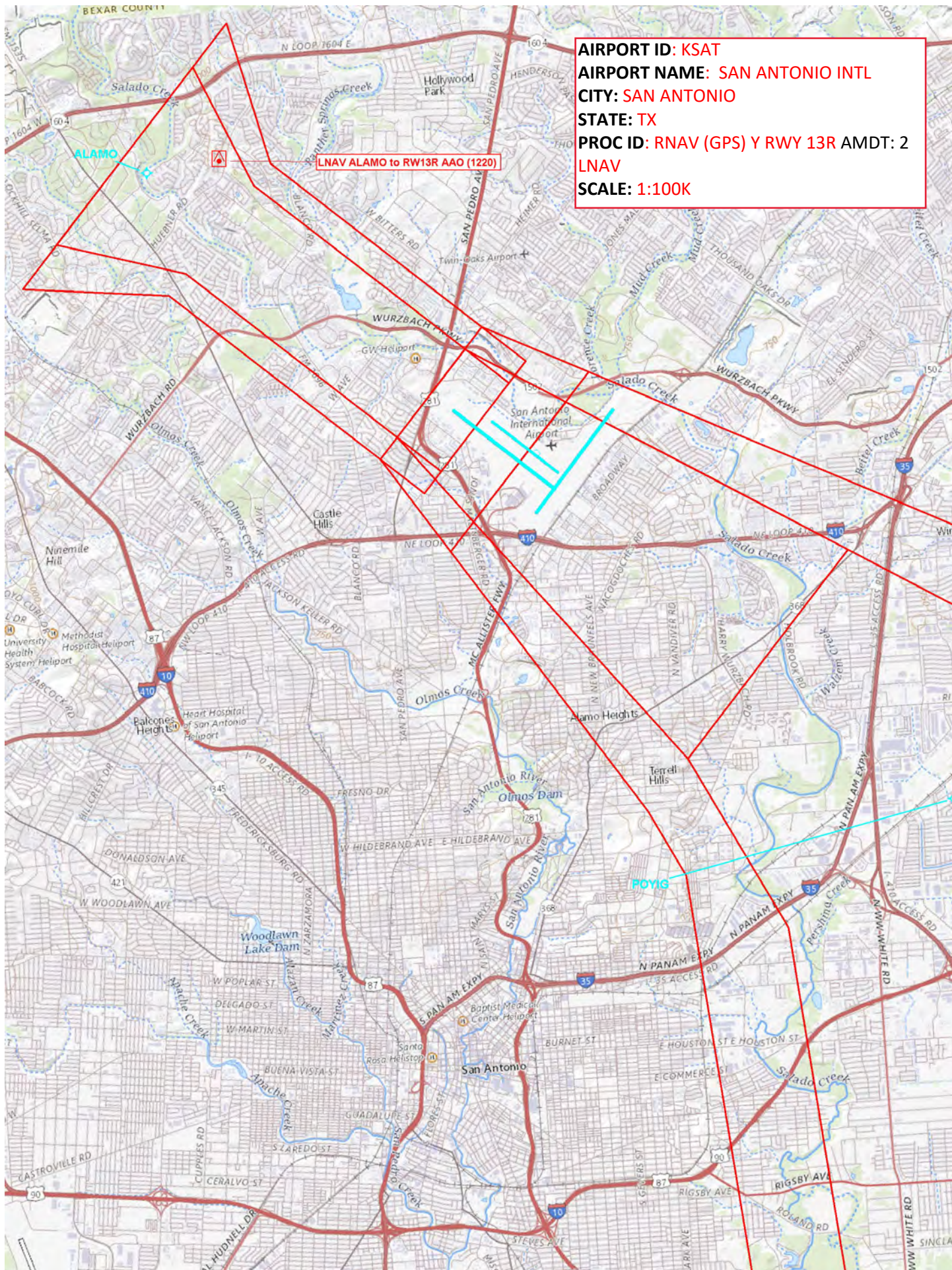
AIRPORT ID: KSAT
AIRPORT NAME: SAN ANTONIO INTL
CITY: SAN ANTONIO
STATE: TX
PROC ID: RNAV (GPS) Y RWY 13R AMDT: 2
LPV
SCALE: 1:100K



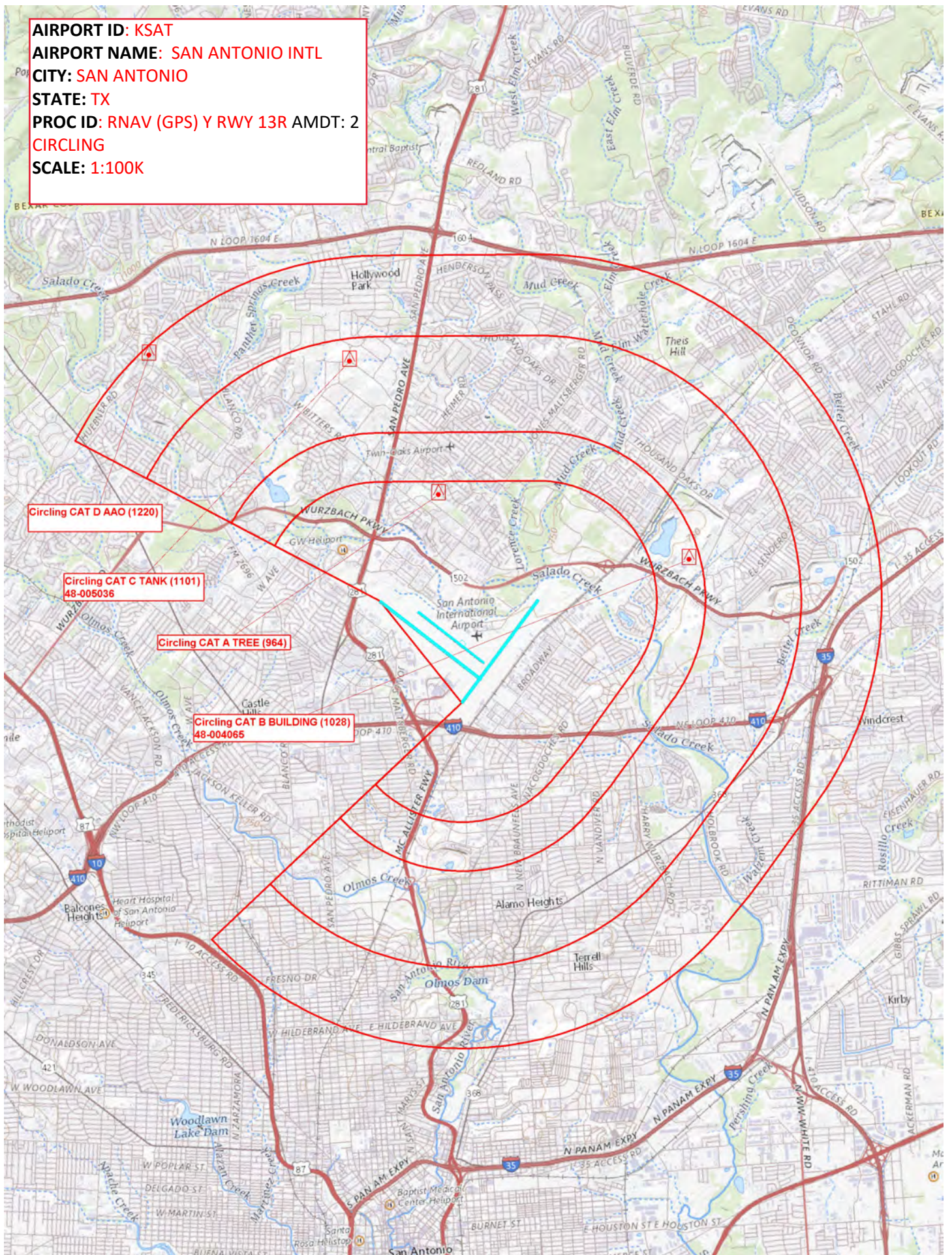
AIRPORT ID: KSAT
AIRPORT NAME: SAN ANTONIO INTL
CITY: SAN ANTONIO
STATE: TX
PROC ID: RNAV (GPS) Y RWY 13R AMDT: 2
LNAV/VNAV
SCALE: 1:100K



AIRPORT ID: KSAT
AIRPORT NAME: SAN ANTONIO INTL
CITY: SAN ANTONIO
STATE: TX
PROC ID: RNAV (GPS) Y RWY 13R AMDT: 2
LNAV
SCALE: 1:100K



SCALE: 1:100K



AIRPORT ID: KSAT
AIRPORT NAME: SAN ANTONIO INTL
CITY: SAN ANTONIO
STATE: TX
PROC ID: RNAV (GPS) Y RWY 13R AMDT: 2
SCALE: 1:500K

